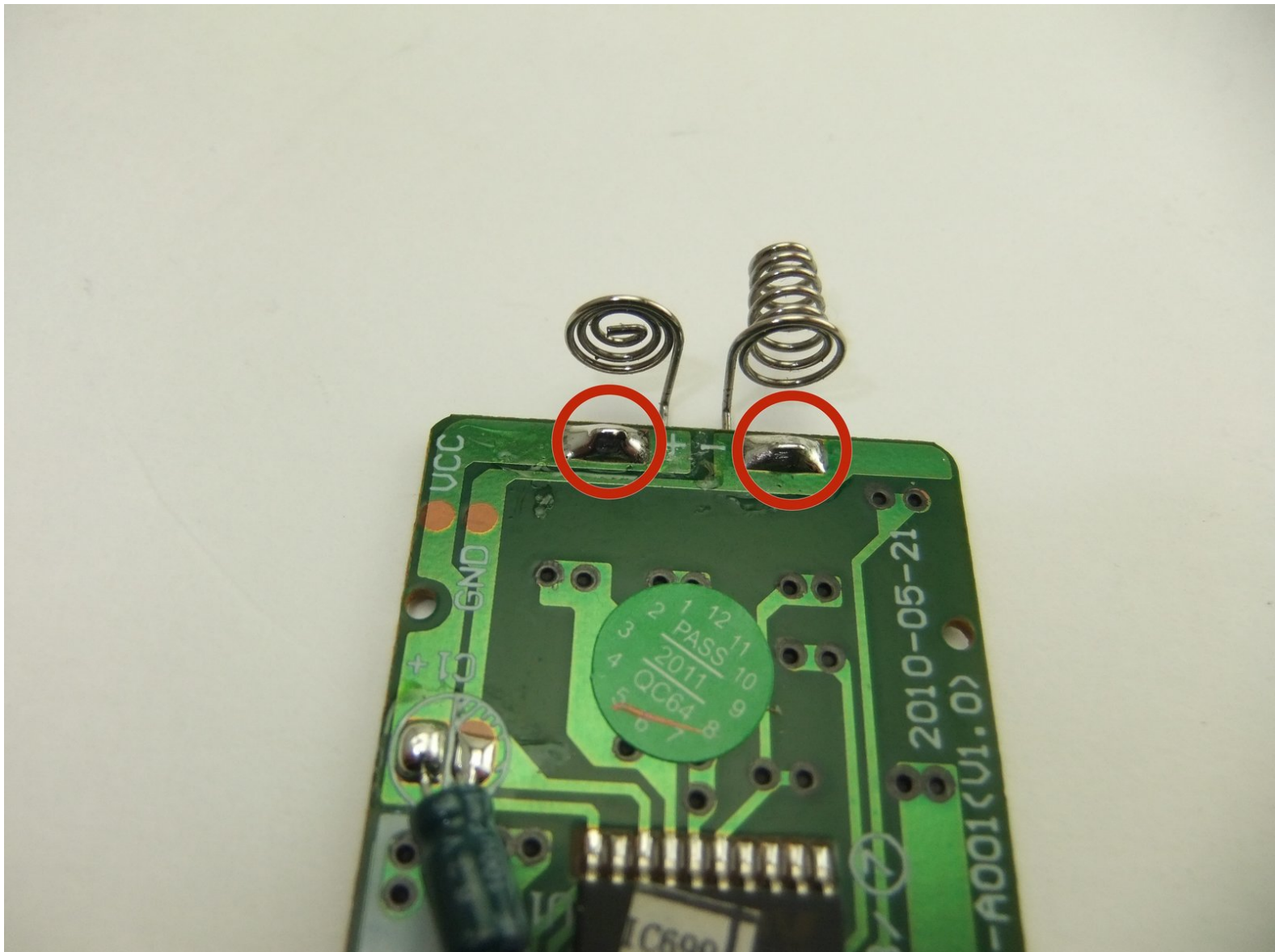




Roku XD 2050X Remote Battery Terminal Replacement

Use this guide to replace the battery terminals in your Roku 2050X remote control.

Written By: William



INTRODUCTION

Use this guide to replace a damaged or malfunctioning battery terminal in the Roku XD 2050X remote control. To complete this guide, you will need to disassemble your remote and use a soldering iron to replace the terminal.




TOOLS:

- [Spudger](#) (1)
 - [Soldering Iron](#) (1)
-

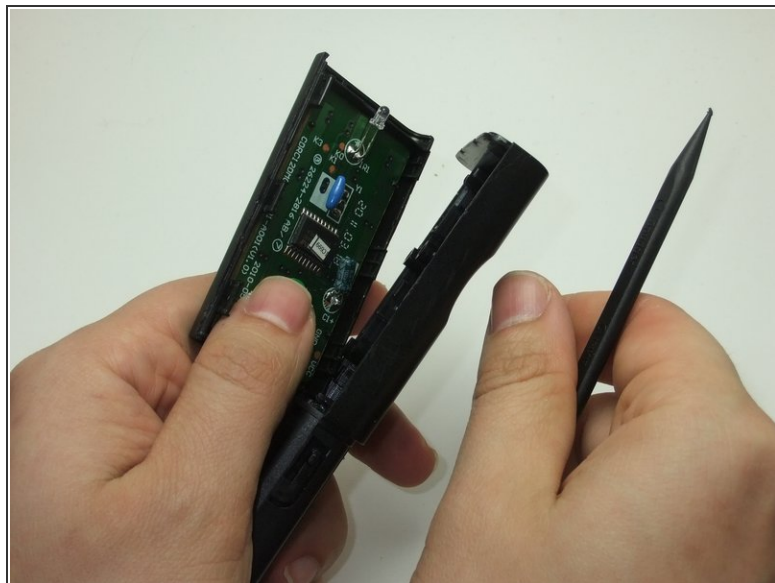
Step 1 — Remote Control Casing



 Take care when handling components. Circuit boards, soldering points, and other areas may have sharp points.

- Remove the battery cover.
- Remove the two AA batteries.

Step 2



- Insert flat edge of spudger into seam between the top and bottom halves of the remote control.
- Gently twist the spudger to separate the top and bottom halves of the remote.

Step 3



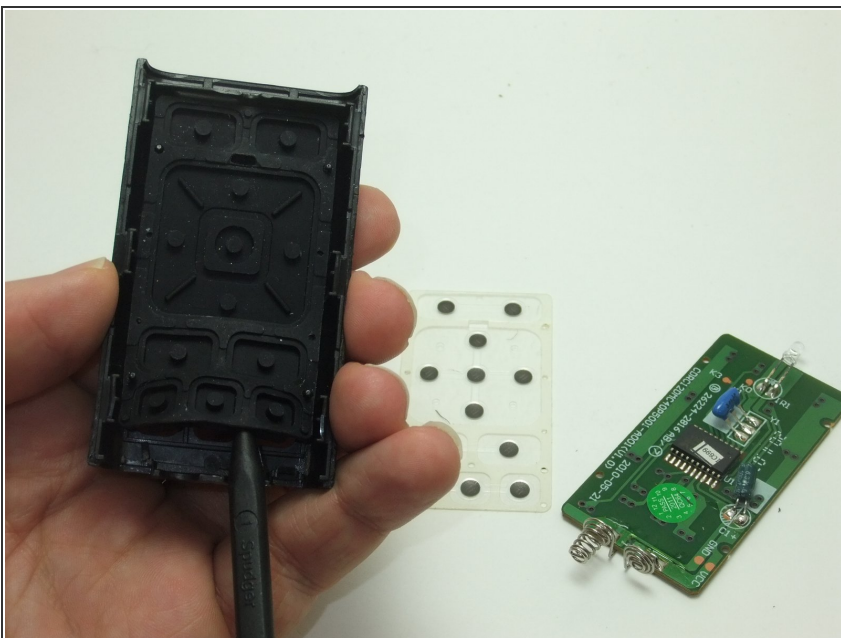
- Gently use the spudger to pry the circuit board loose.

Step 4



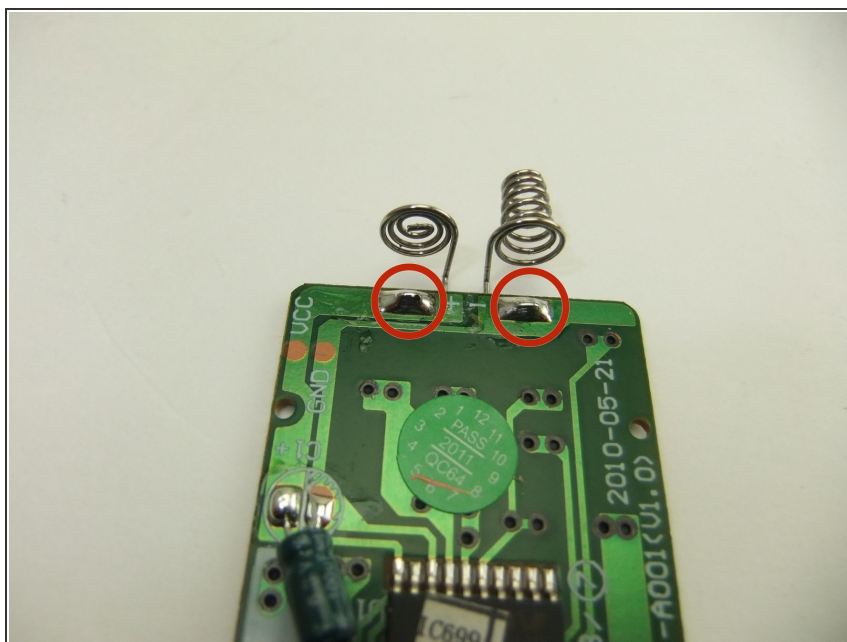
- Using either end of the spudger, gently lift and remove the clear keypad backing.

Step 5



- Using either end of the spudger, lift and remove the rubber keypad.

Step 6 — Remote Battery Terminal



- Desolder the contacts for the battery terminals.
- Remove the battery terminals from the circuit board.
- For help with soldering view the [ifixit soldering guide](#).

To reassemble your device, follow these instructions in reverse order.