



Hamilton Beach 25460Z LED Replacement

This guide will be used to replace a broken LED bulb. These are the lights on top that light up when the grill is on or ready to cook.

Written By: Katie Howes



INTRODUCTION

This a replacement that requires good soldering skills and confidence working with tiny, delicate, wiring.

If you are unfamiliar with soldering and de-soldering, make sure to check out iFixit's [Soldering Skills page](#) before attempting this replacement!




TOOLS:

- [4mm Allen Wrench](#) (1)
 - [Metal Spudger](#) (1)
 - [Phillips #2 Screwdriver](#) (1)
 - [Solder](#) (1)
 - [Soldering Iron](#) (1)
-

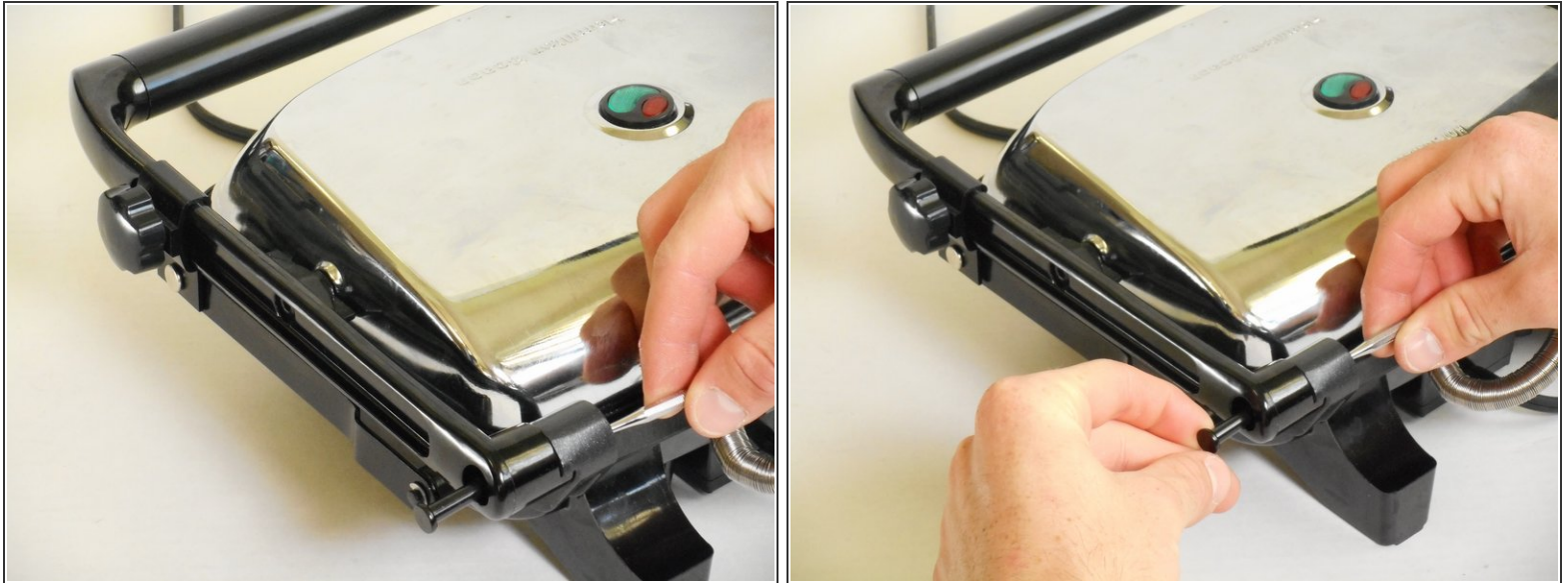
Step 1 — Handle



 Unplug your device before proceeding with disassembly.

- On the back of the press, remove the locking washer by prying upwards with the nylon or metal spudger tool.
- Repeat for the other washer across from the first one.

Step 2



- Using any long, thin object, push the 43mm bolt from the inside towards the outside to expose the end of the bolt.
- Pull the end of the bolt out to completely remove it.
- Repeat for the second bolt.

Step 3



- Using the 4.0mm Allen Wrench, unscrew the two 26mm bolts connecting the handle to the upper heating element housing on both sides.

Step 4



- Unscrew the locking knob all the way to remove it.

Step 5




- Slide the locking knob couple down to the base of the handle, then pull up on the free end of the handle. It will easily pop off.

Step 6 — LED



- Gently separate the heating element housing from the cooking surface by pulling up on the housing and pushing down on the surface.

 Pulling too far or too hard can break the delicate internal wiring.

Step 7



- On the underside of the housing, use the PH2 Screwdriver to remove the single 12mm screw to disconnect the LED tray.
- The housing can now be completely removed.
- Place on the side for reassembly.

Step 8



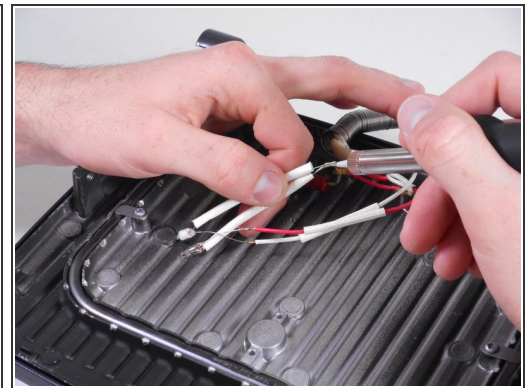
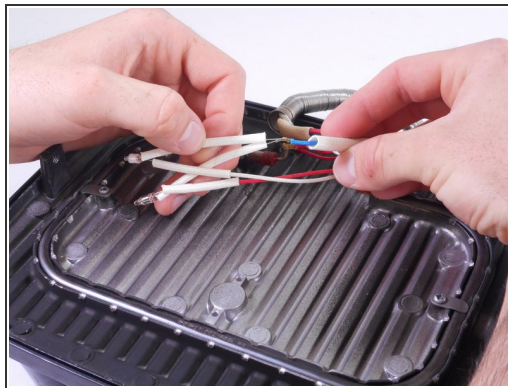
- Using the PH2 screwdriver, remove the single 10mm screw on the circular plastic LED tray.
- Now remove the small plastic T-shaped piece and the plastic tray completely

Step 9



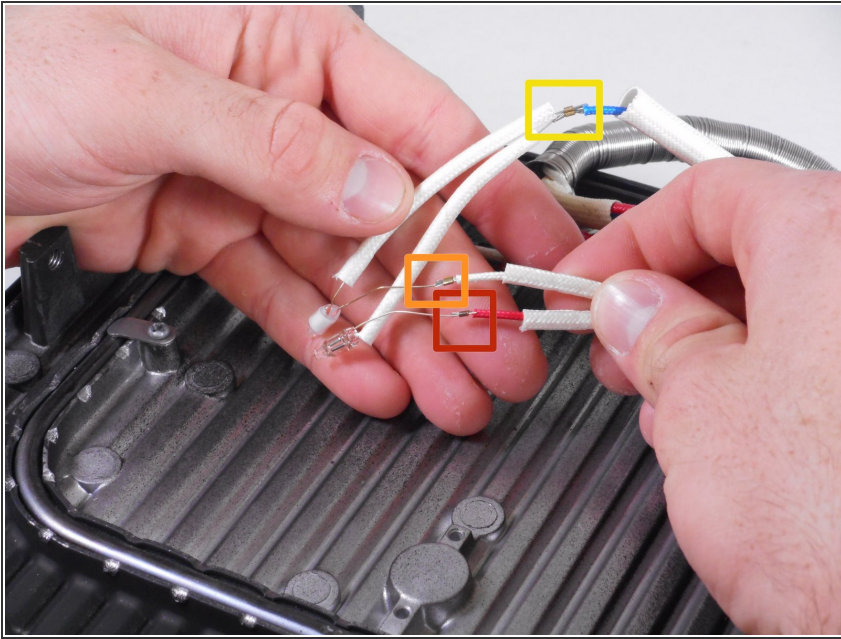
- Gently pull off the translucent bulb covers

Step 10



Very gently, slide the white wiring covers down to expose the wiring connectors

Step 11



- ❗ Refer to this [page](#) to brush up on your soldering skills.
- The LED can now be removed by desoldering the connector at each wiring junction.
- The red LED connects to the red wire (positive) and the blue wire (negative, marked in yellow.)
- The green LED connects to the white wire (Positive) and the blue wire (negative, marked in yellow.)

To reassemble your device, follow these instructions in reverse order.