



Aiptek Pocket DVII 1.3M LCD Memory Ejecting Assembly Replacement

If pressing the eject button does not eject the memory card, follow these steps to replace the mechanical device responsible for ejecting the card.

Written By: Gyoza Aba Hivatal





TOOLS:

- [Phillips #00 Screwdriver](#) (1)
-

Step 1 — Memory Ejecting Assembly



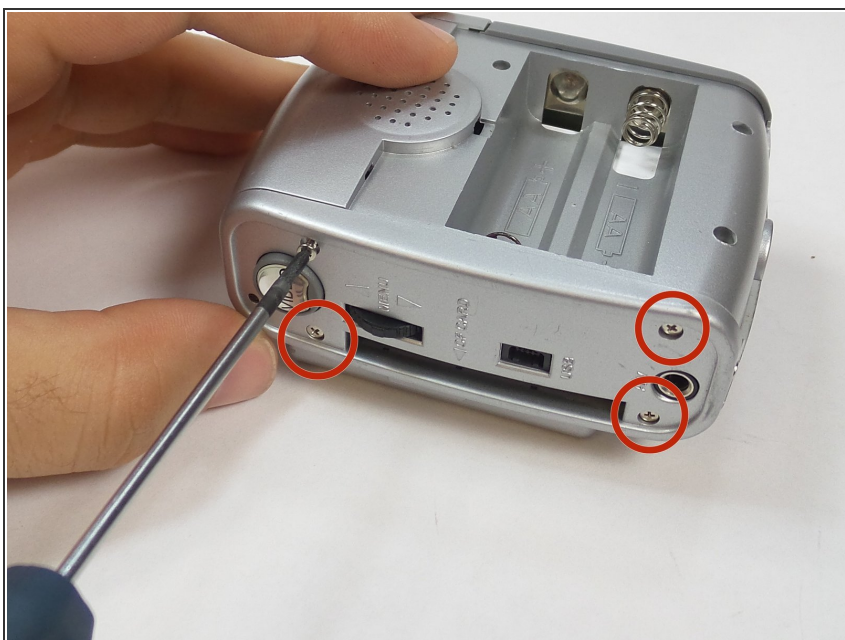
- Remove the battery cover.
- Remove the batteries.

Step 2



- Unscrew the three 4mm screws from the battery side of the device. Use a Phillips screw driver.

Step 3



- Remove the four screws from the back side.

Step 4



- Remove the sticky black dot.
- Remove the hidden screw.

Step 5



- Remove the two screws from the top side of the device.
- Remove the two screws from the bottom side of the device.

Step 6



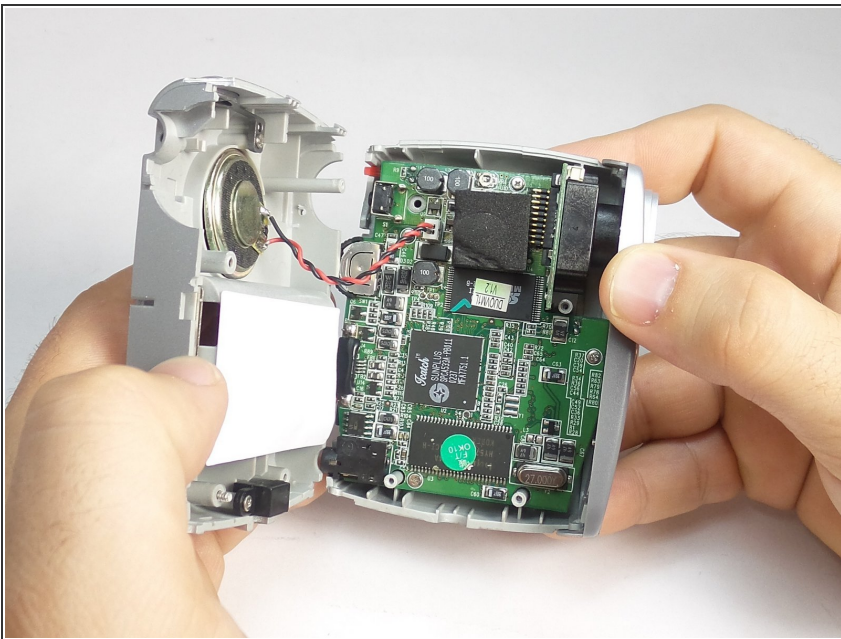
- Remove the rear cover.
- ⚠ Be careful not to lose the spring inside.

Step 7



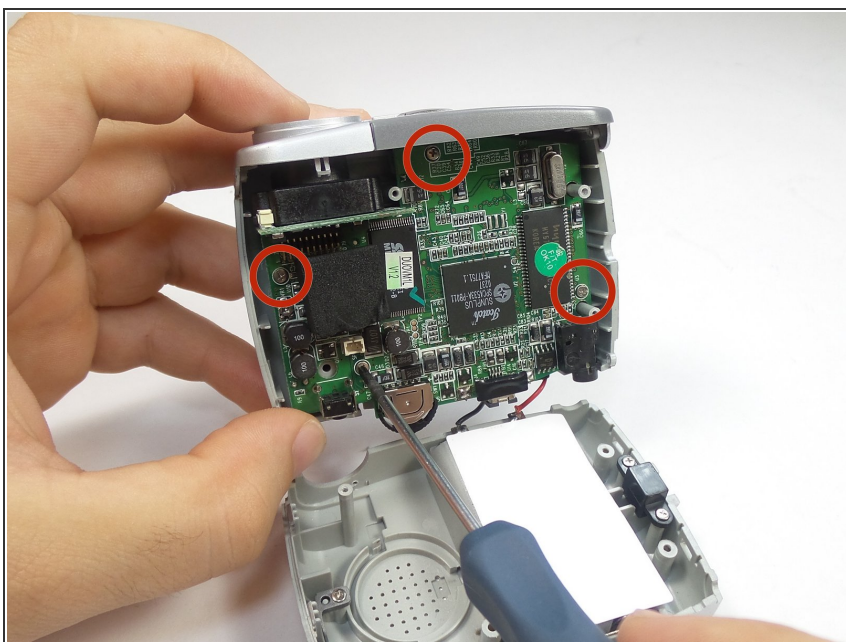
- Pull back the front cover so that you can dislodge the side cover.

Step 8



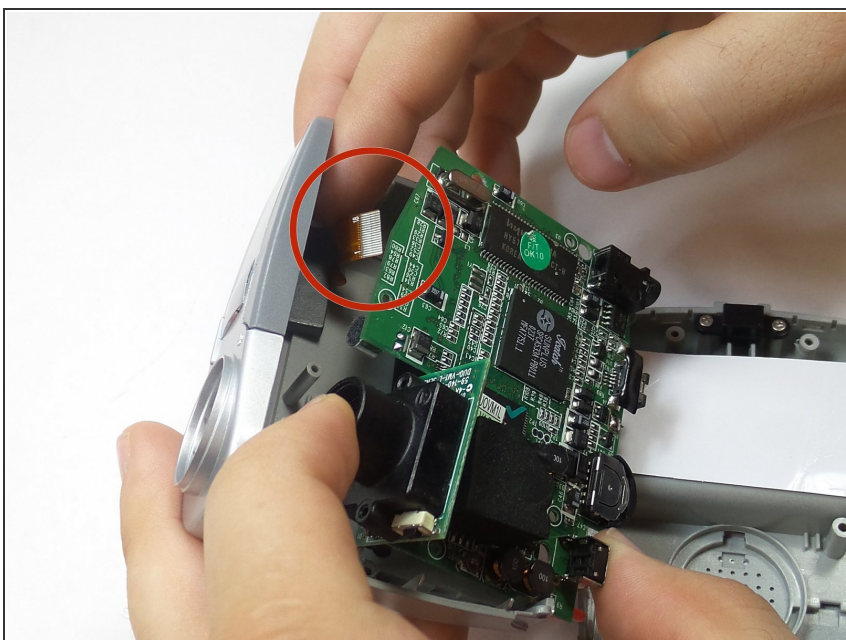
- Unfold the device and be careful not to tear the black and red power supply wires.

Step 9



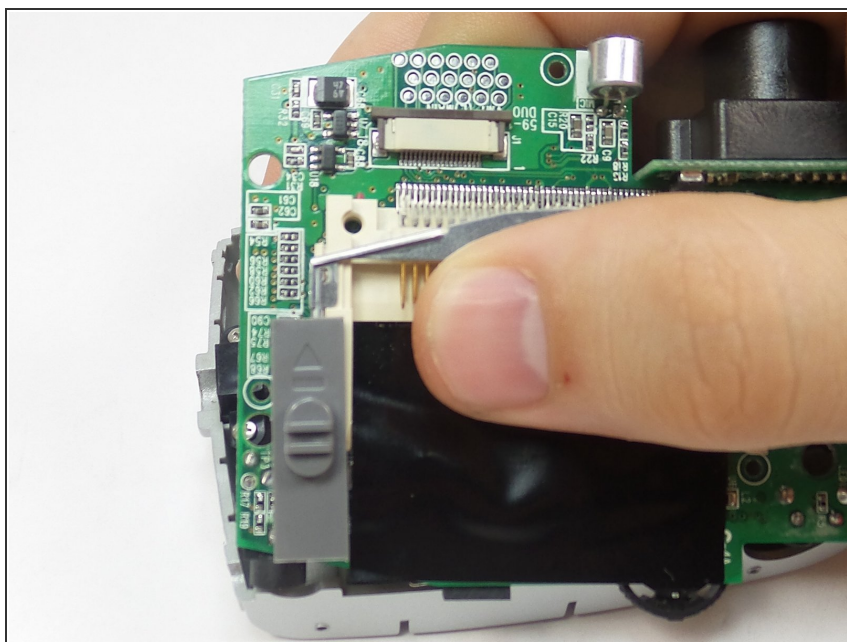
- Remove the four screws from the motherboard.

Step 10



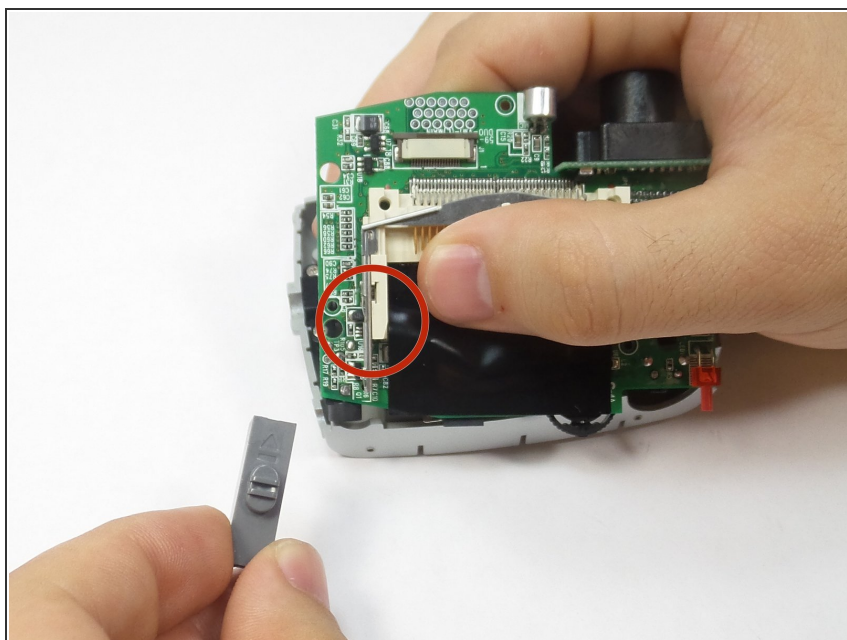
- Take out the motherboard while disconnecting the flip screen's cable from underneath.

Step 11



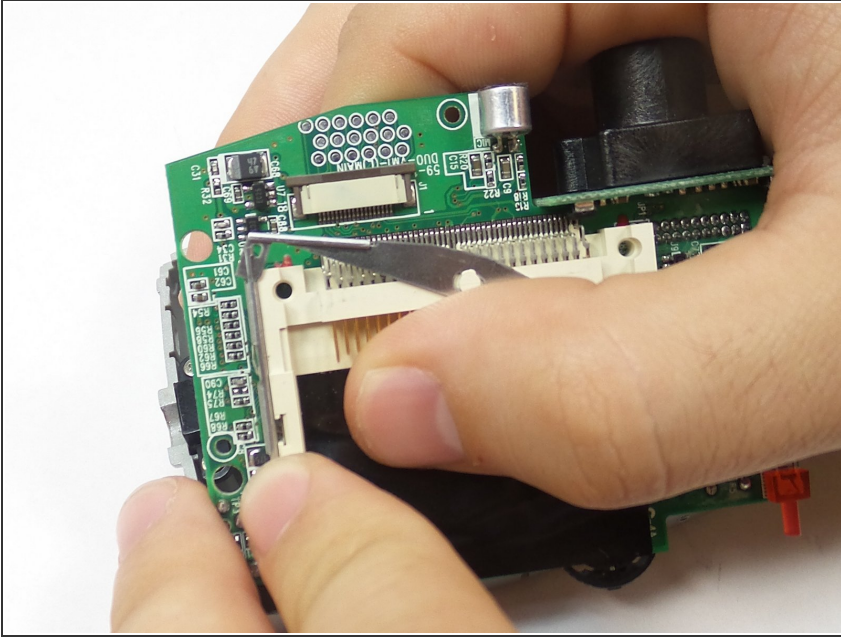
- Remove the side cover.
- Flip the device and locate the ejecting assembly.

Step 12



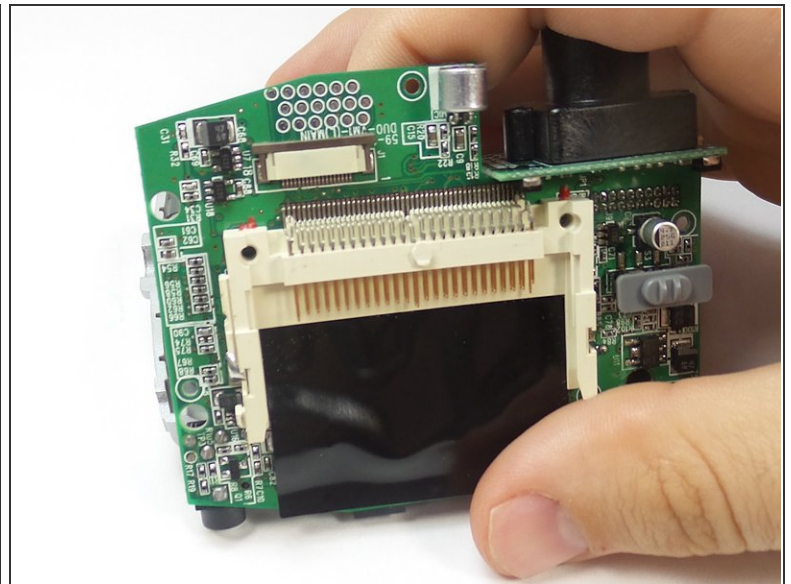
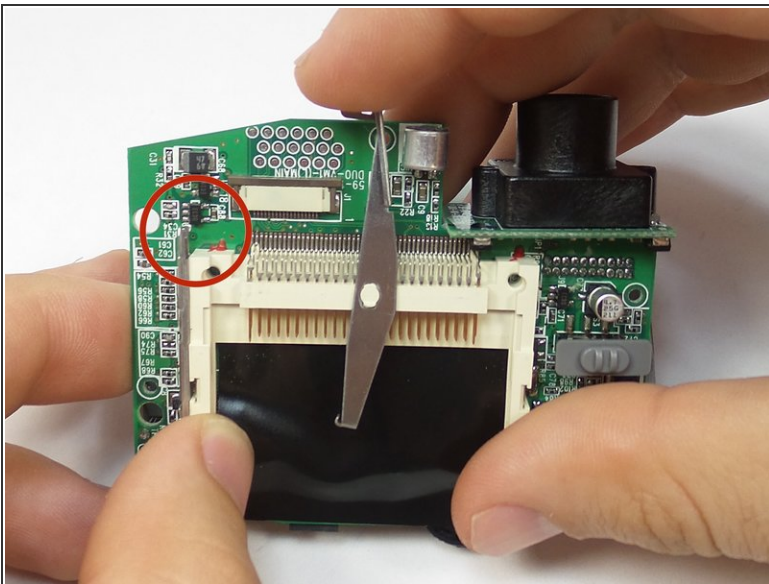
- Remove the grey button.

Step 13



- Push the metal arm the button was on all the way up.

Step 14



- Pop the main metal arm out of the other metal arm's socket.
- Position the arm vertically like in the first picture. The arm should come off easily.
- Replace the ejecting arm.

To reassemble your device, follow these instructions in reverse order.