



SkullCandy Hesh Auxiliary Cable Replacement

This guide will show SkullCandy Hesh users how to replace their auxiliary cable after it has been severed or frayed.

Written By: Sarah Burk



INTRODUCTION

In the case of a severed or frayed auxiliary cable, replacements can be purchased or salvaged from another broken device. This guide will show users how to replace it temporarily, without the use of a soldering gun.



TOOLS:

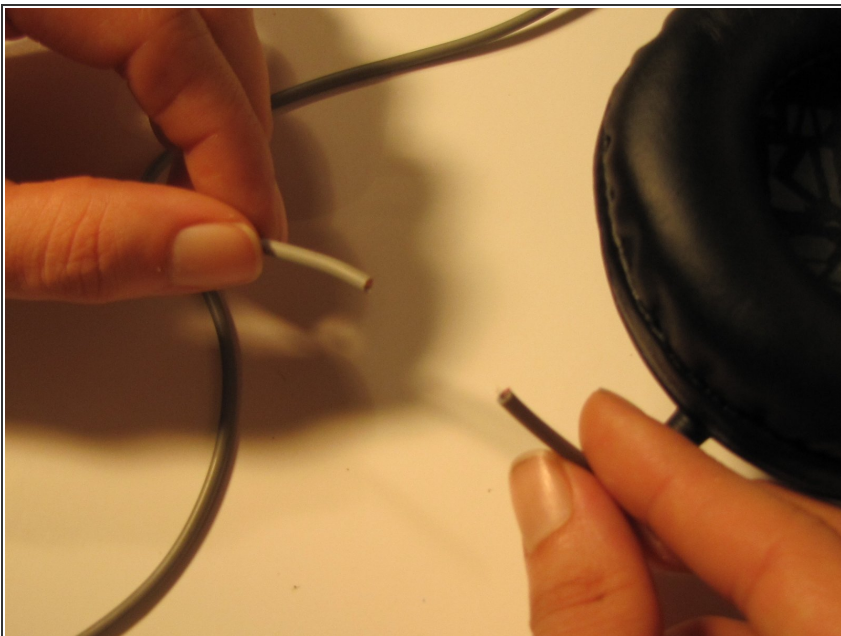
- [Flush Wire Cutters](#) (1)
 - [Spudger](#) (1)
 - [Electrical Tape in 6 Assorted Colors](#) (1)
-

Step 1 — Determine the damage



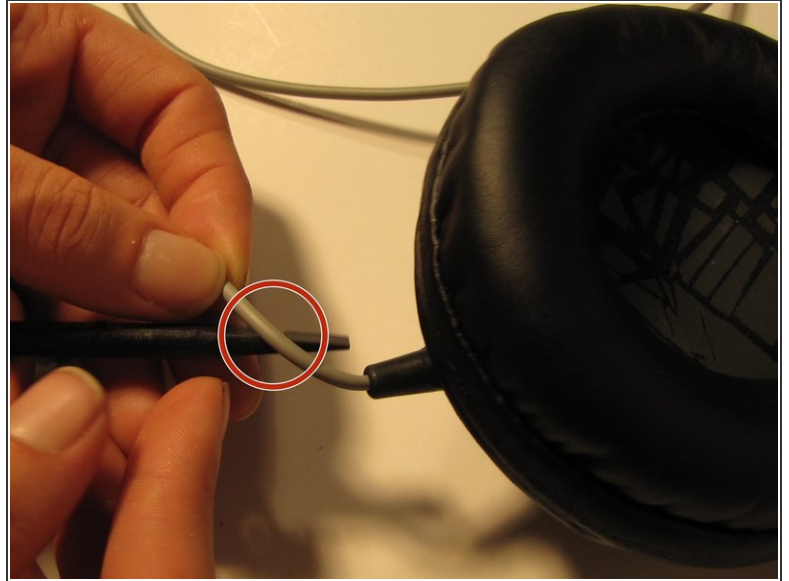
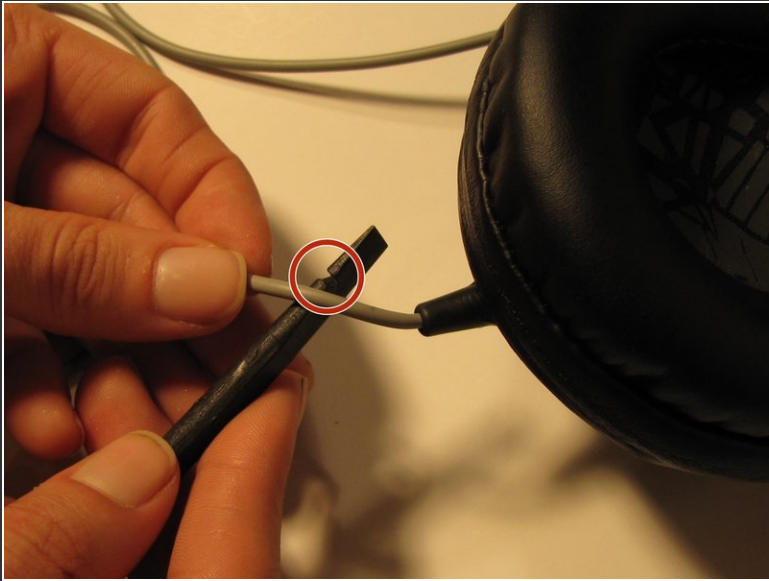
- Gently gripping the auxiliary cable of your headset, run your fingers down it's length, feeling for bumps or tears in the plastic sheathing. If there are multiple damaged areas, choose the one closest to the device.

Step 2



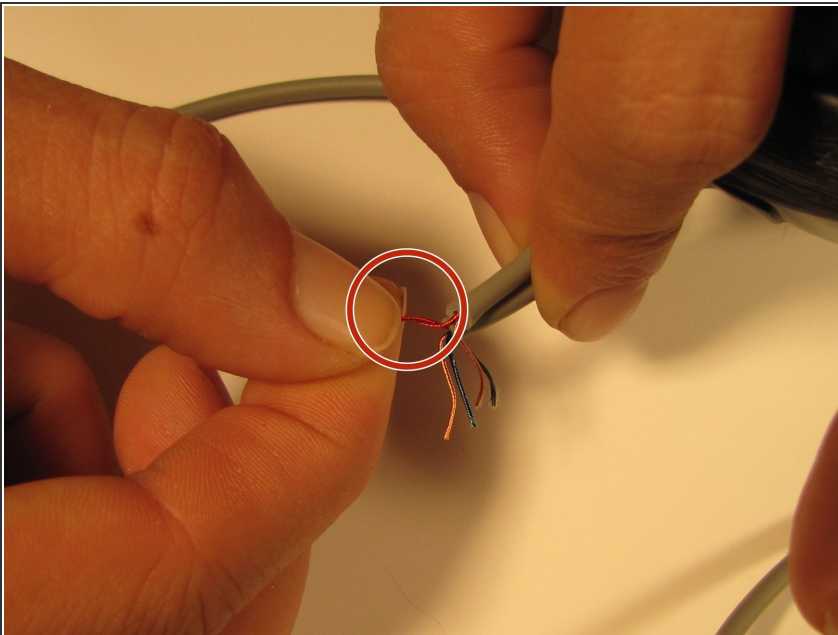
- Using wire cutters, cut the auxiliary cable at the determined damaged area.
- Next, cut your replacement cable to the same length of the removed portion of the damaged cable.

Step 3



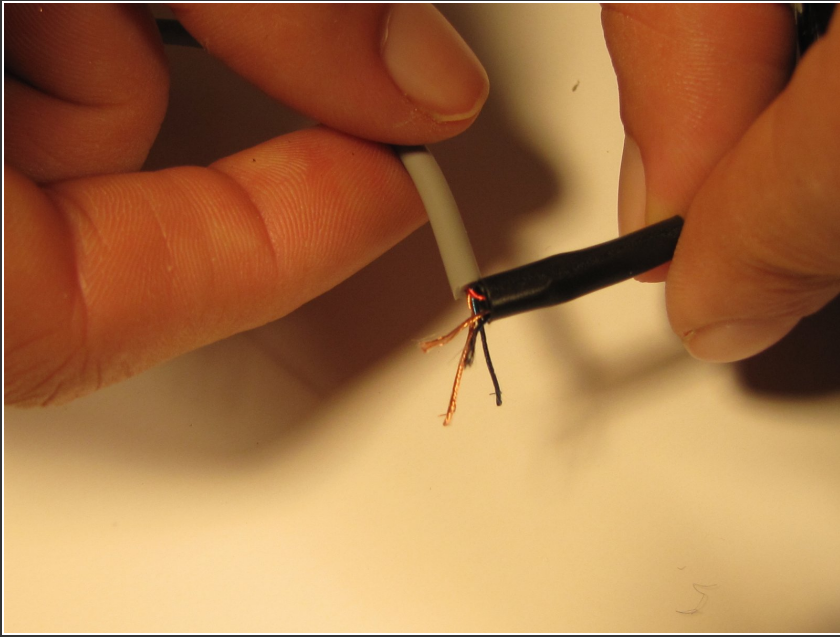
- Using the spudger tool, grip and remove approximately an inch of the plastic sheath from the device's working wire and from the new auxiliary cable.

Step 4



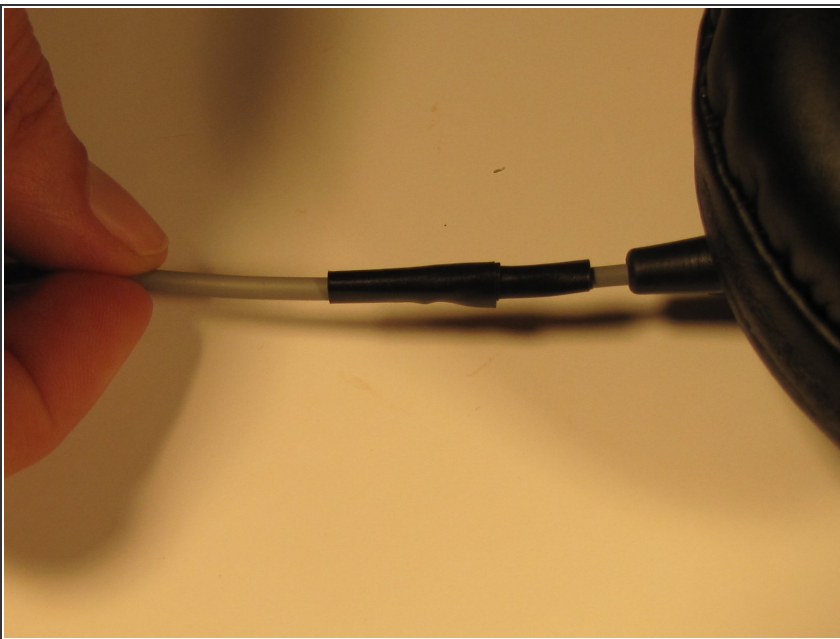
- Use the spudger tool to remove the coating on the smaller colored wires inside the wire attached to the device and the new auxiliary cable.
- Twist together the same colored wires from the device cable and the new cable.

Step 5



- Wrap each of the individual colored wires with electrical tape to insulate them from the other wires.

Step 6



- Secure all wires with a layer of electrical tape wrapped around the location of the splicing.

Test your device by plugging it into a compatible device using the auxiliary cable and playing a sound.