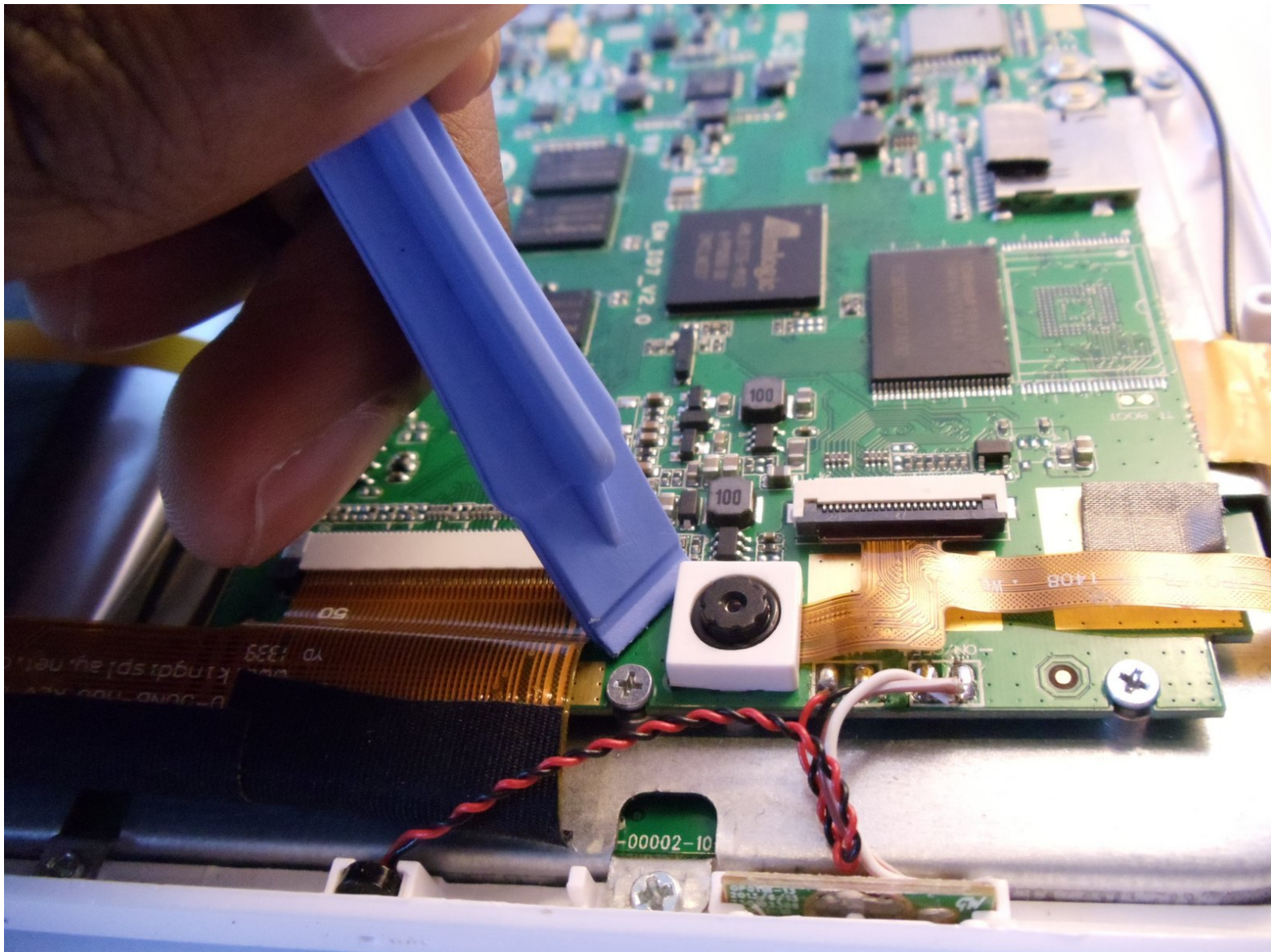




# Oregon Scientific Meep! X2 Cameras Replacement

This guide shows you how to remove and replace the cameras in your Meep! X2 tablet.

Written By: J'mel Henneman



---

# INTRODUCTION

Follow this guide in order to fix the cameras in your Oregon Scientific Meep! X2 tablet.

---



## TOOLS:

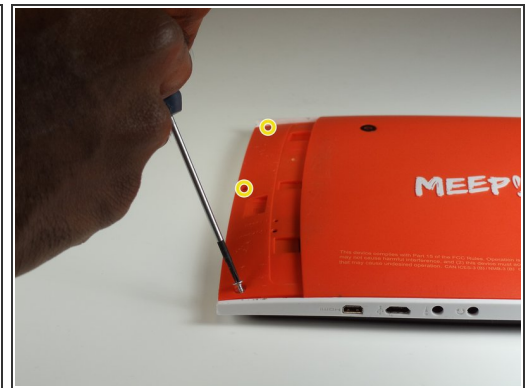
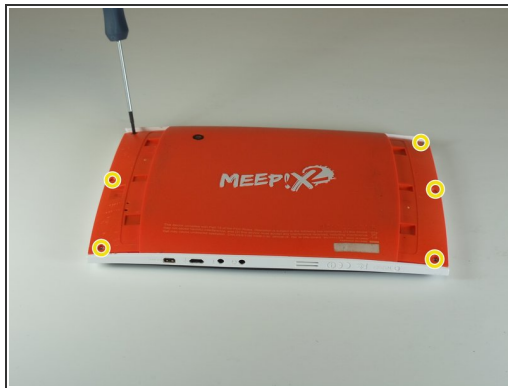
- [Phillips #00 Screwdriver](#) (1)
  - [iFixit Opening Tools](#) (1)
-

## Step 1 — Rear Casing



- Remove the orange covers from the left and right sides of the device by sliding up against the tabs.

## Step 2



- You can remove the rear casing by unscrewing all six phillips #00(3.5mm x 4.5mm)screws from the left and right side of the device.

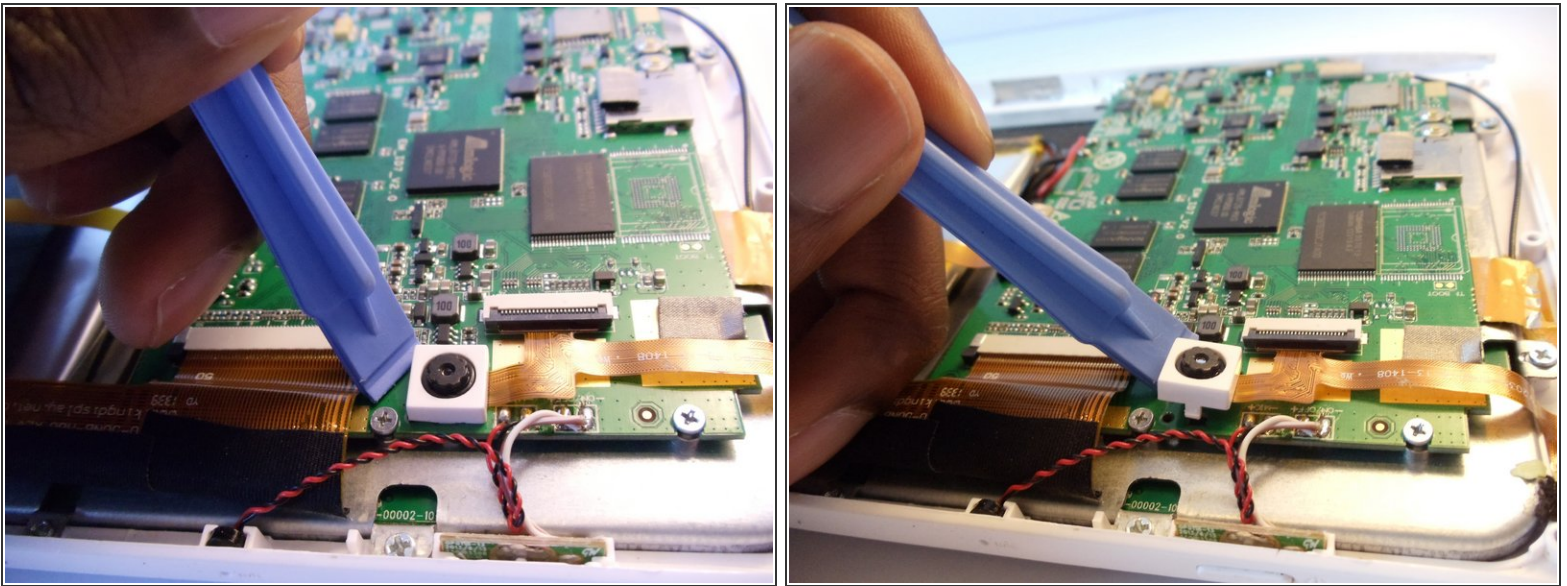


### Step 3



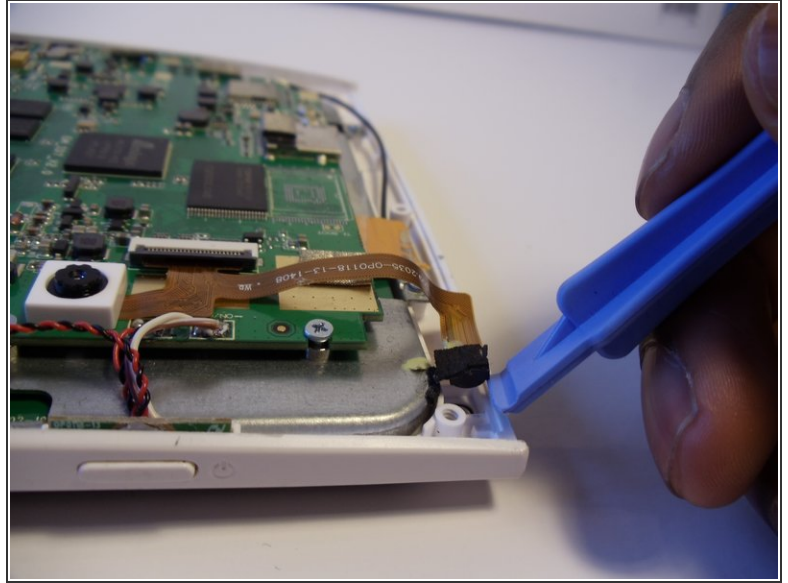
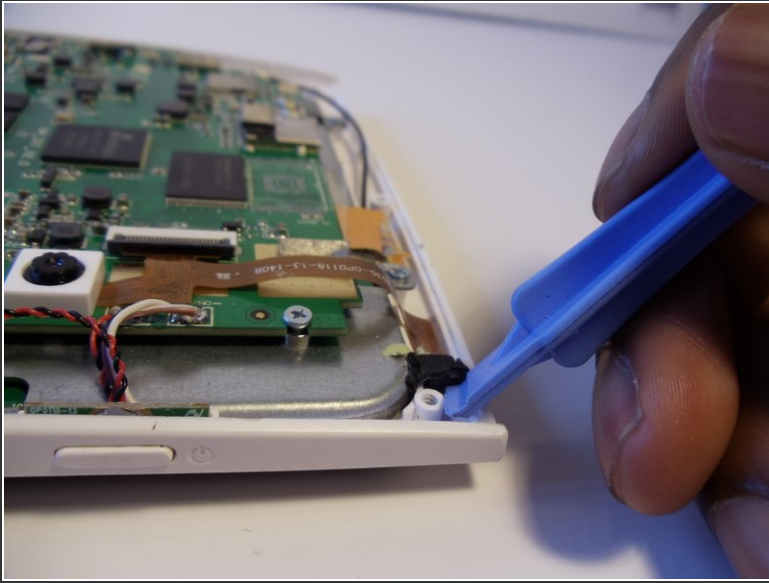
- Use the plastic opening tools to undo the clips around the edges of the device.

### Step 4 — Cameras



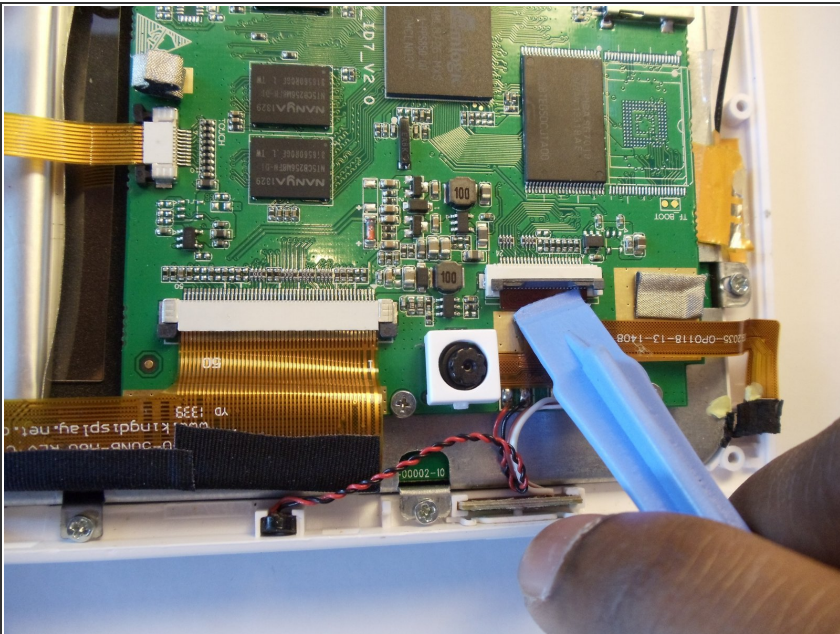
- Slip the plastic opening tool under the white, square enclosure of the camera and lift upward to unhook the camera unit from the motherboard.

## Step 5



- Pry the second camera out of its slot with one of the plastic opening tools.
- ❗ Be sure to undo the black adhesive foam from the metal casing in order to remove the camera properly.

## Step 6



- Release the black security clip on the ribbon cable with your plastic opening tool.
- Gently disconnect the gold ribbon cable from the motherboard. The two cameras will remain attached to the ribbon cable.

To reassemble your device, follow these instructions in reverse order.