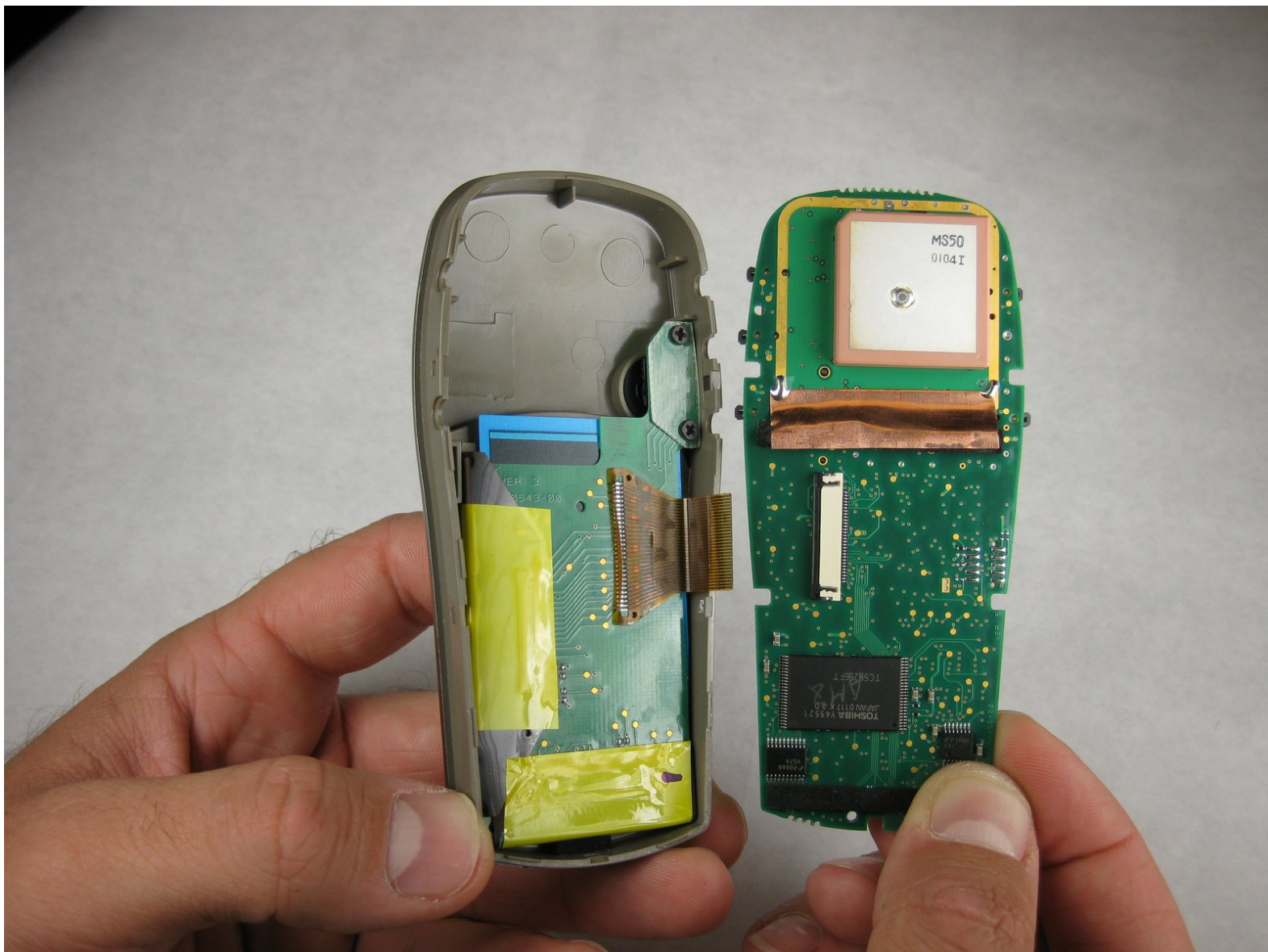




# Disassembling Garmin eTrex Vista H Motherboard

This guide will give you access to the motherboard of the device.

Written By: Lauren Noyes





## TOOLS:

- [Spudger](#) (1)
  - [Tweezers](#) (1)
-

## Step 1 — Removing Battery



- Flip the device to the backside, and locate the metal tab at the center of the back cover.

## Step 2



- Lift the metal tab up, and rotate it counterclockwise. This will unlock the back case cover.



### Step 3



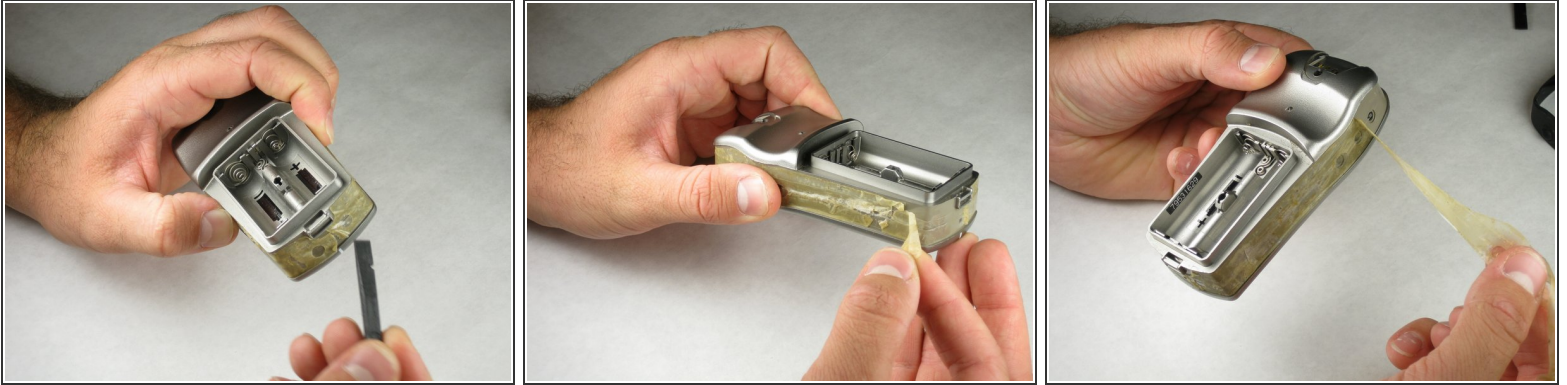
- Lift the battery plate off to either insert or remove 2 AA batteries.

### Step 4 — Disassembling the Garmin eTrex Vista-H Outer Case



- With the wedge side of a spudger (or a small, flat head screwdriver), remove the black rubber case support from the device body.

## Step 5



- With the pick side of a spudger (or tweezers), peel the sticky tape from the device.

## Step 6



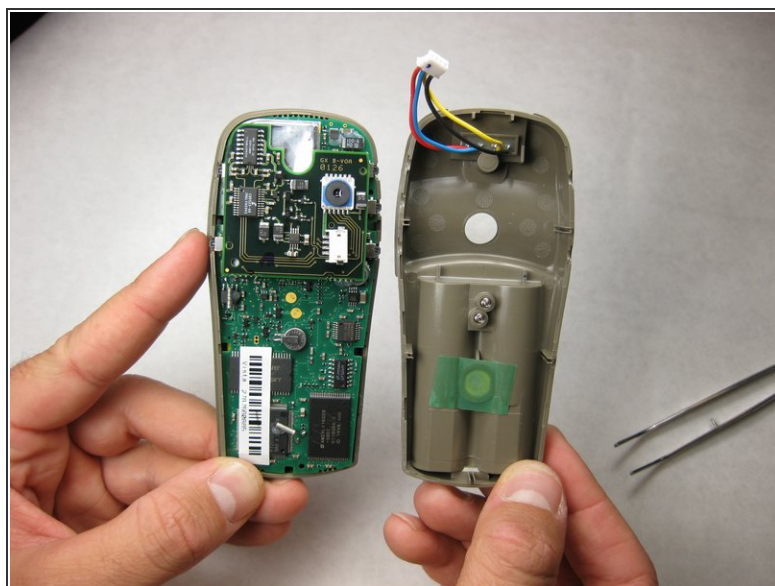
- Split the front and rear panels by inserting a small pointed tool (such as a pen point or a screwdriver tip SL1.5) in the 5 plastic tabs along the sides of the device.

⚠ Do not remove the back panels quickly. If too much force is applied, there is a wire connection that will break.

⚠ CAUTION! Be careful not to force the tabs inward. This will result in broken tabs.



## Step 7



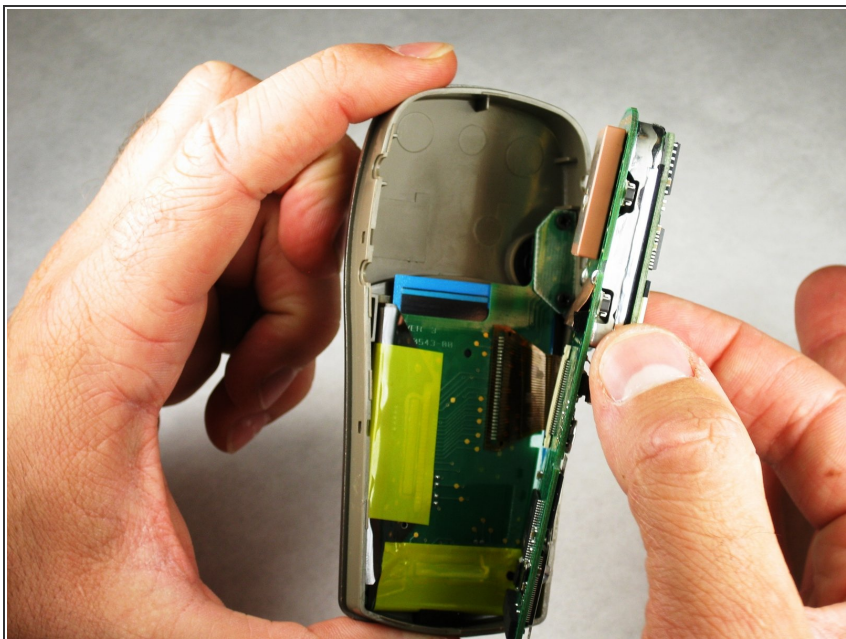
- With tweezers (or your fingernails), carefully disconnect the wires between the PC input and the motherboard.

## Step 8 — Disassembling Garmin eTrex Vista H Motherboard



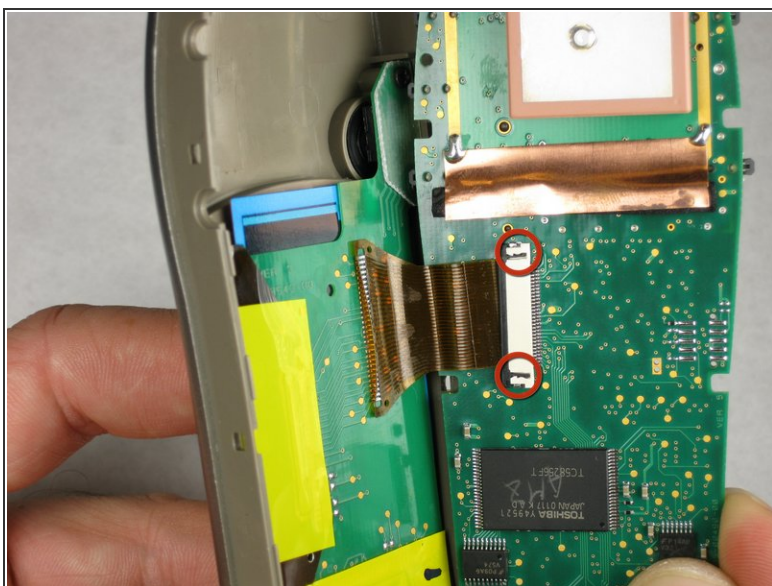
- The motherboard should look like this. If it is dirty, gently use a small paintbrush to clean it of dust.

## Step 9



- ✦ There are no screws holding the motherboard in place.
- ⚠ Carefully lift the motherboard from the case.

## Step 10



- With the pointed end of a spudger (or the small end of a Philips #00 screwdriver), gently unhook the small black tabs by pressing into the interlocking hooks that are sunk into the white wire connector.
- Gently pull the wire ribbon from the white connector.

To reassemble your device, follow these instructions in reverse order.