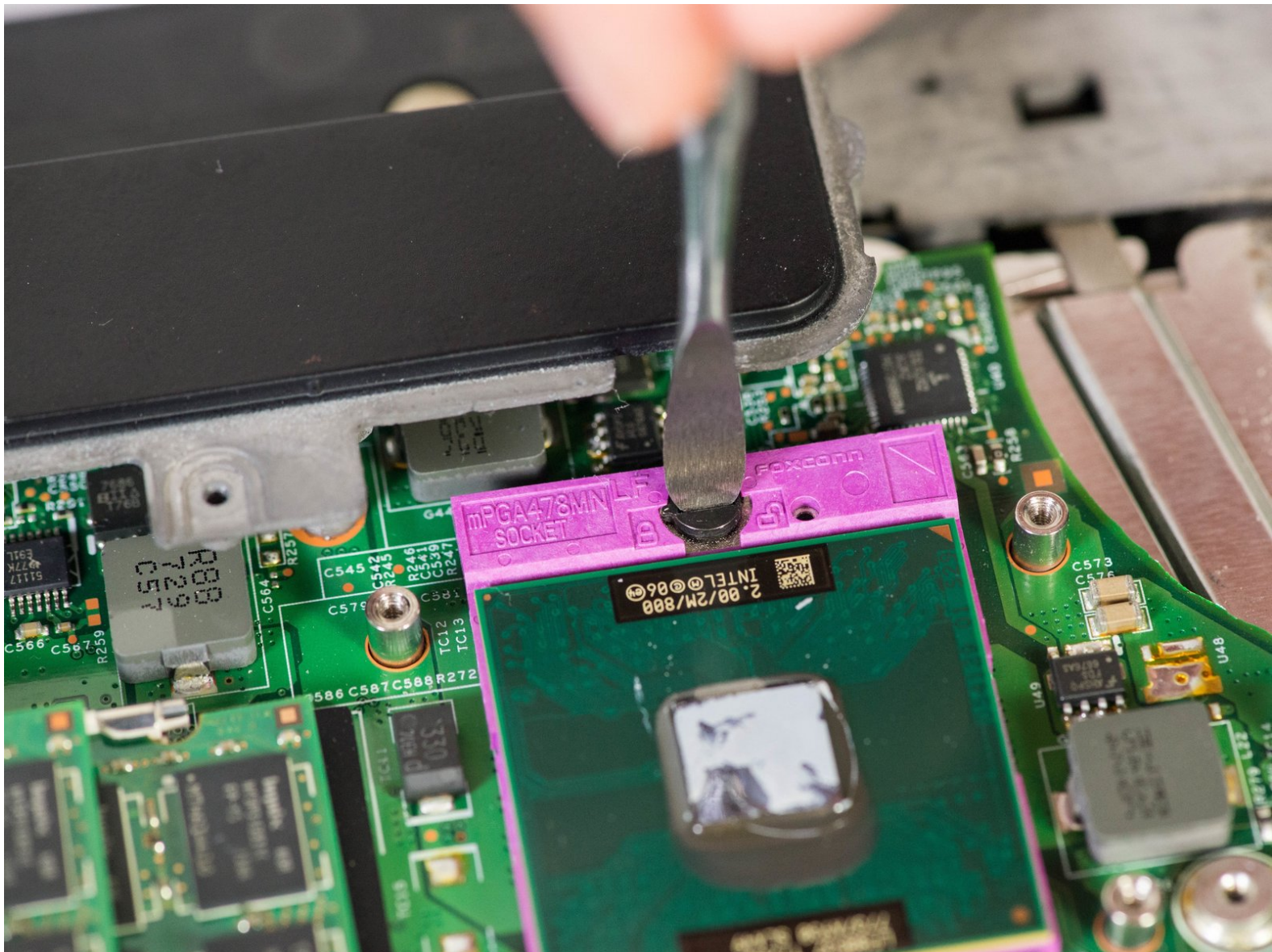




Dell XPS M1530 CPU Replacement

This guide shows you how to successfully replace your CPU.

Written By: Jase Sasaki



INTRODUCTION

This is a last step to fixing your laptop if it refuses to turn on after the battery and power cord are addressed. Additionally, if any problems that have occurred correspond with the troubleshooting page then you should replace the CPU.



TOOLS:

- [Metal Spudger](#) (1)
 - [Phillips #1 Screwdriver](#) (1)
 - [Arctic Silver ArctiClean](#) (1)
 - [Arctic Silver Thermal Paste](#) (1)
 - [Coffee Filters or a lint-free cloth](#) (1)
 - [Spudger](#) (1)
-

Step 1 — Battery



- Turn the computer upside down with the battery facing you.
- ❗ Turn the computer off and disconnect the charging cable from the computer.
- ⚠ Failure to unplug the charging cable may result in electric shock.

Step 2



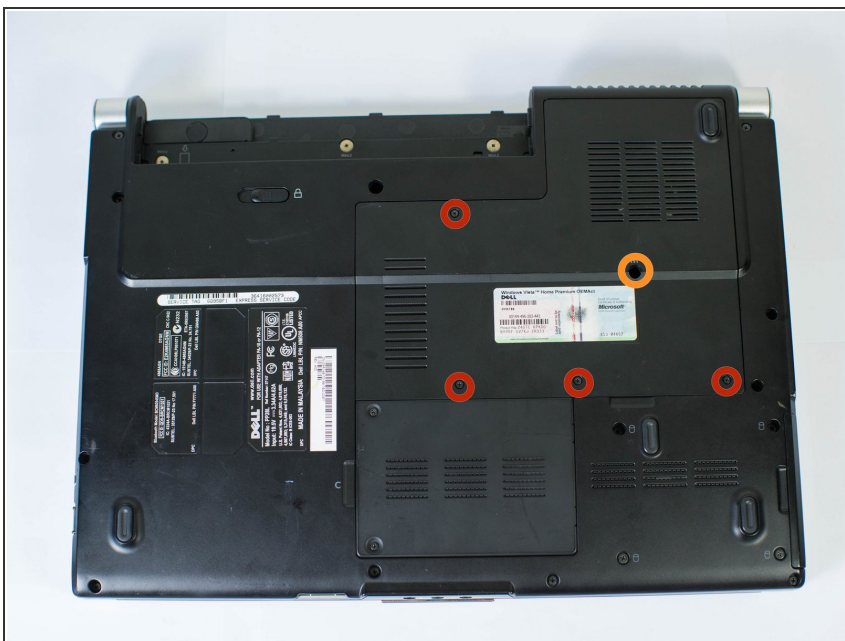
- Push the switch as far to the right as possible to unlock the battery.

Step 3



- Remove the battery using two hands and pull it away from the computer.

Step 4 — Heat Sink

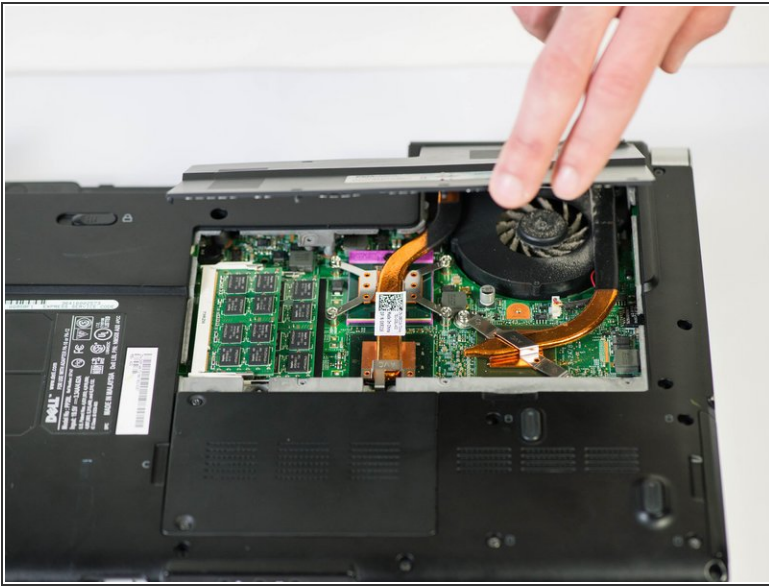


- Unscrew the four Phillips #1 screws holding down the back panel. Then remove one 5.8mm Phillips #1

screw labeled "M" in the middle of the back panel.

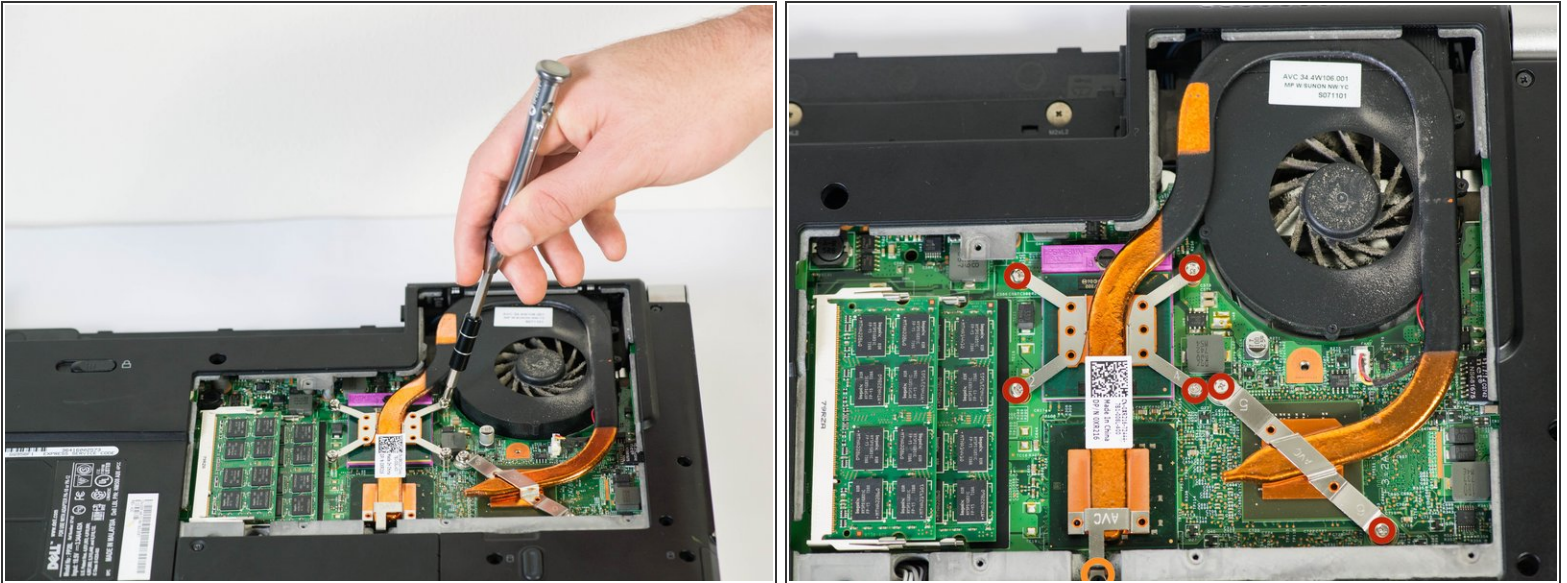
- Four 3.9mm Phillips #1 screws
- One 5.8mm Phillips #1 screw

Step 5



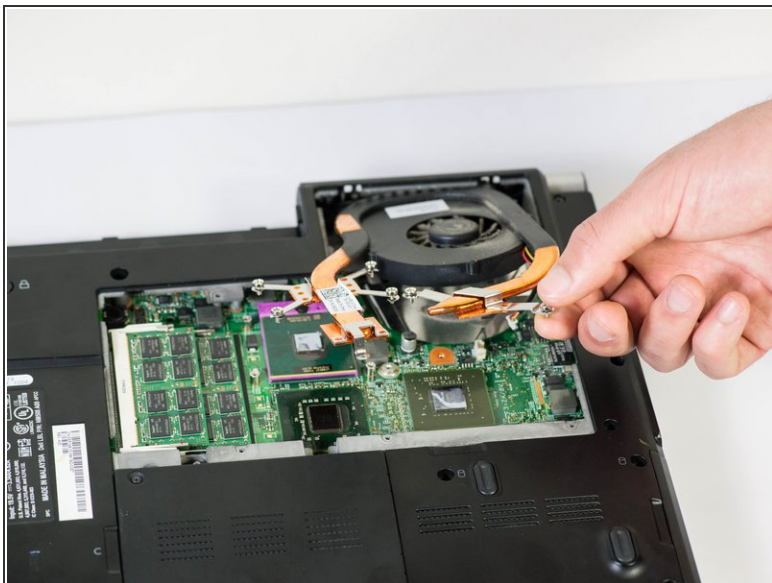
- Using the highlighted indent, pull up and out to remove the back panel.
- (i) The indent should provide enough grip to remove the panel with ease.

Step 6



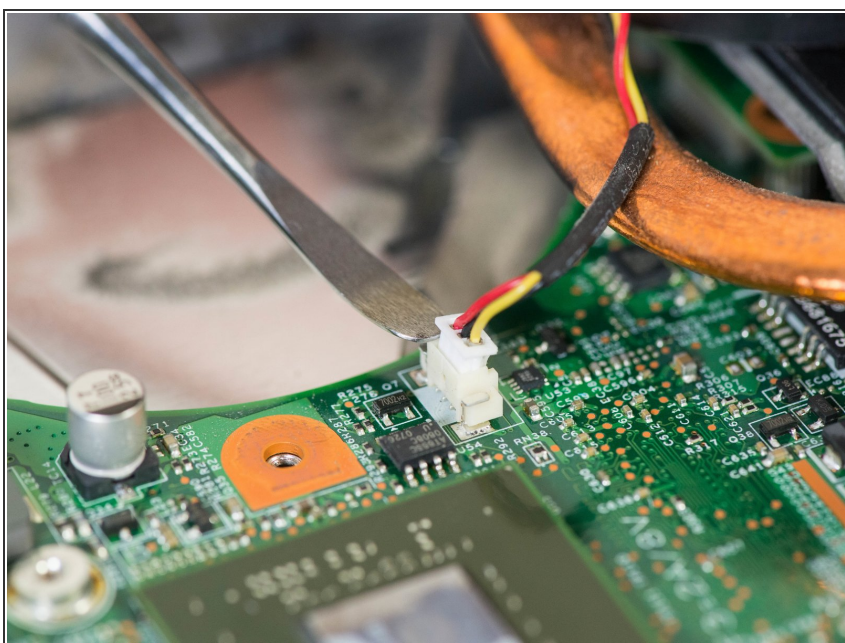
- First, unscrew the six screws that are holding down the fan and heat sink with a Philips #1 screwdriver. Then use a Phillips #1 to remove the single screw near the bottom of the heat sink.
 - Six Silver Chrome 5.8mm Phillips #1 screws
 - One 5.8mm Phillips #1 screw
- ⚠ Remove the four screws that are holding down the CPU (the four to the top left that form a rectangle in this image) first. Unscrew them in an X pattern (eg. top left screw, bottom right screw, top right screw, bottom left screw) to minimize risk of harming CPU.

Step 7



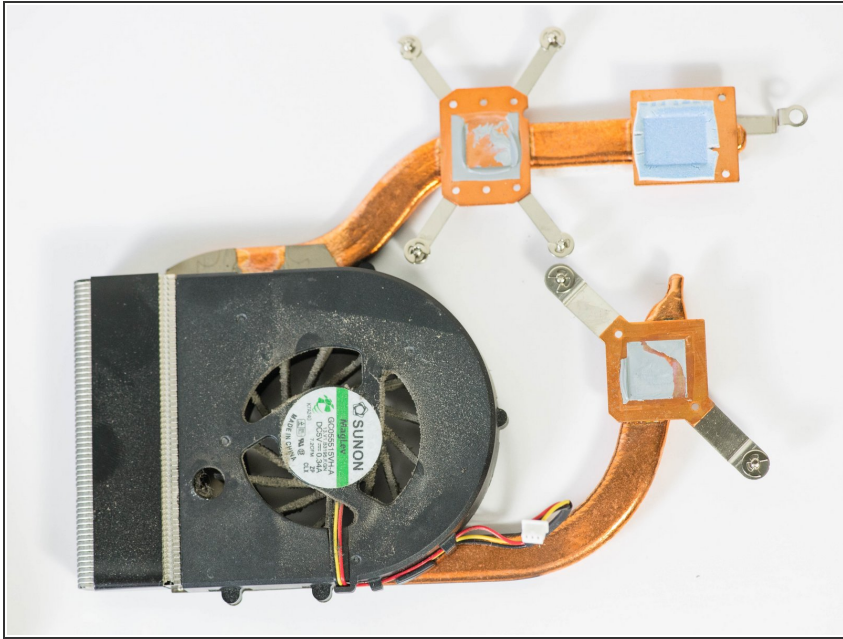
- Carefully lift the fan and heat sink from the laptop.
- ⓘ Be careful not to pull up too hard, because the power pin is still connecting the fan to the laptop.

Step 8



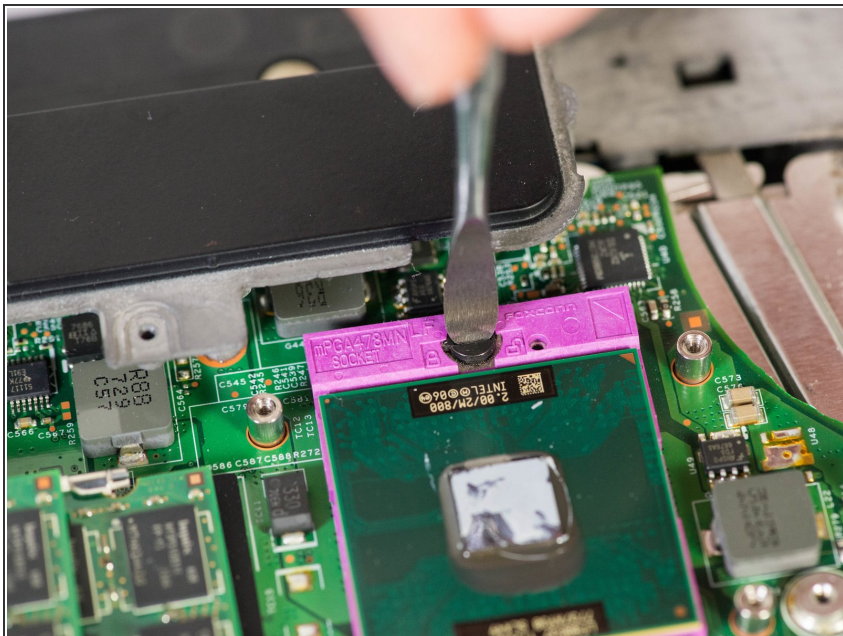
- Use your fingers or a spudger to remove the power pin connecting the fan to the laptop by pulling it straight up off the motherboard.

Step 9



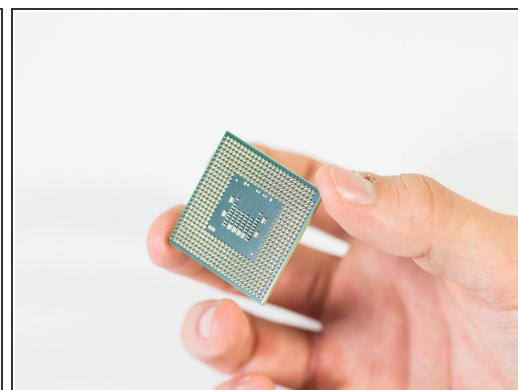
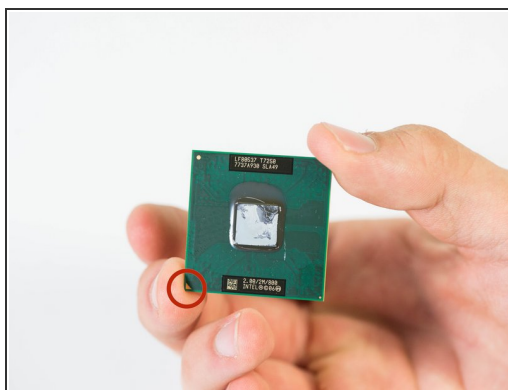
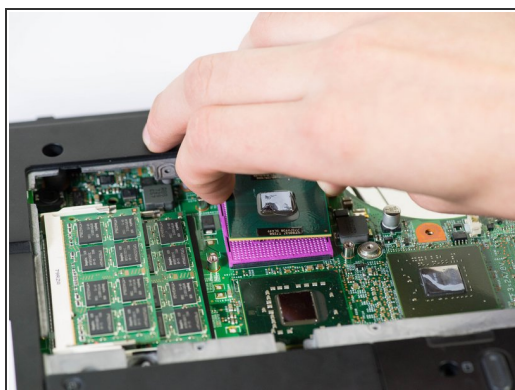
- Remove the fan and heat sink from the laptop.
- ★ When installing the new heat sink, do not forget to replace the thermal paste underneath the heat sink. See iFixit's [Applying Thermal Paste](#) guide for further instructions.

Step 10 — CPU





- Use a Metal Spudger to turn the black plastic screw to the unlock position from the secure position of the CPU on the motherboard.

Step 11



- Carefully remove the CPU by pulling it straight up.
- CPU Orientation triangle

 Make sure you pull straight up on the CPU when removing it. Also be careful not to touch the pins on the CPU as they are thin and will bend very easily.

 The orientation of the CPU is important, locate the corners that has a small triangle. Make sure to match that triangle corner to the upper right corner of the mount that also has a picture of a triangle.

To reassemble your device, follow these instructions in reverse order.