



# Nikon COOLPIX S9500 Memory Card Replacement

Switching or adding a memory card.

Written By: Jim Bui



## INTRODUCTION

If you need more memory for your pictures to save, switching to a bigger memory card is the way to go.

## Step 1 — Memory Card



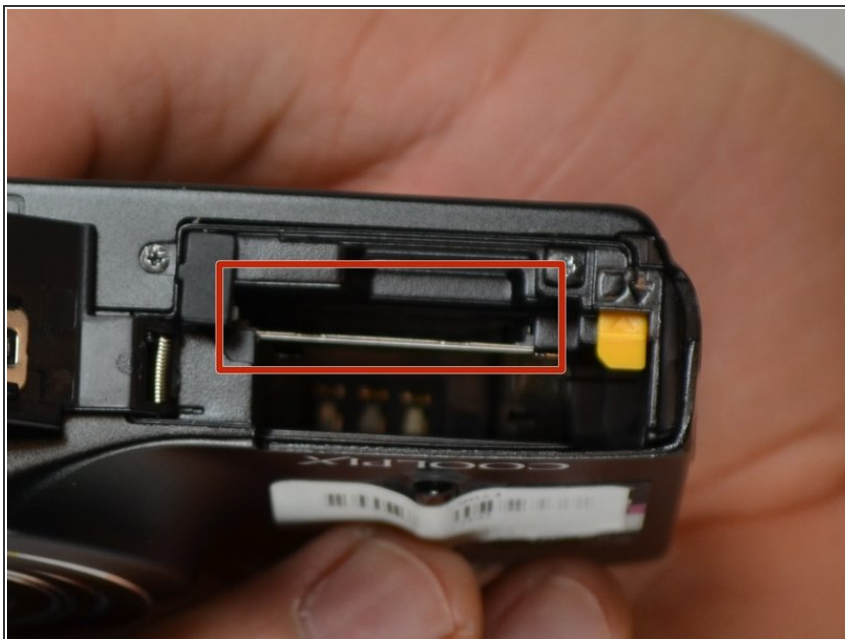
- With the bottom of the camera facing you, find the battery latch and slide it to the left.

## Step 2



- Swing the door open to expose the battery compartment.

## Step 3



- The memory card socket is located above the battery socket.
- Push in the memory card until a click is heard. Release it, and the memory card will pop out.

To reassemble your device, follow these instructions in reverse order.