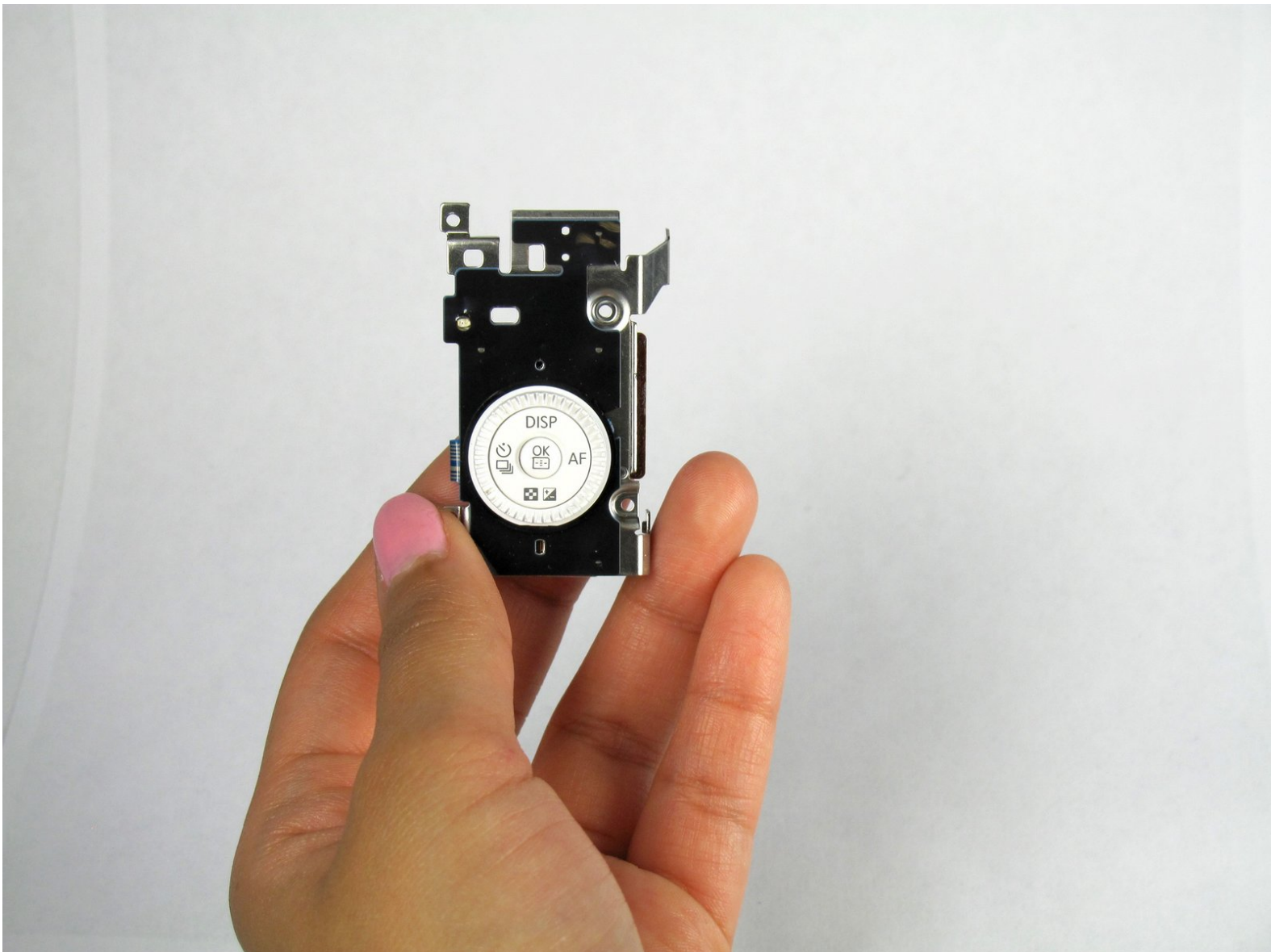




# Samsung NX1000 Menu Button Replacement

This will guide you through replacing the Menu Button.

Written By: Yesenia



## INTRODUCTION

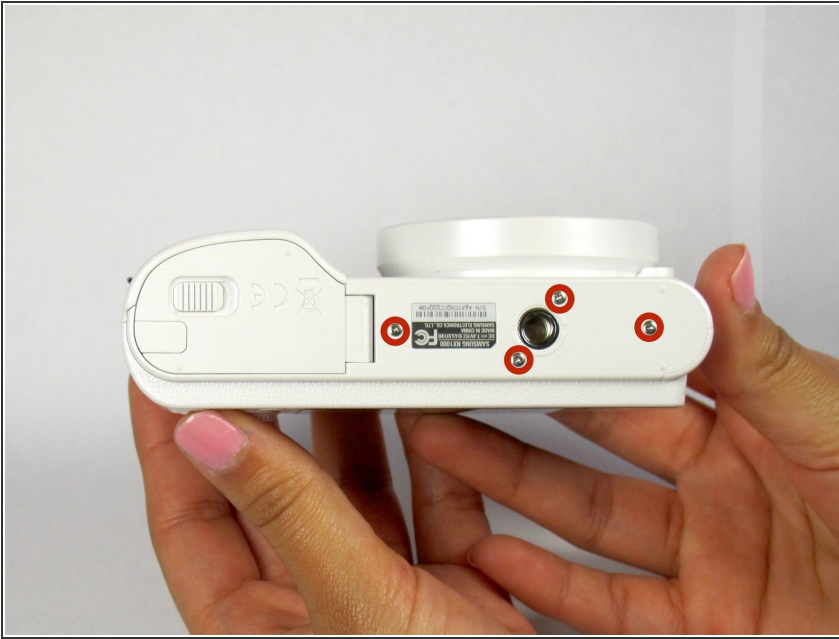
If your menu button is not working properly or sticking or is even chipped or cracked and you wish to replace it here is the guide needed. Make sure you turn off the camera and remove the battery before you begin the replacement.



### TOOLS:

- [Metal Spudger Set](#) (1)
  - [iFixit Opening Tools](#) (1)
  - [Phillips #000 Screwdriver](#) (1)
-

## Step 1 — Removing the Back Panel



- Locate the bottom panel of the camera.
  - Unscrew the four 4.5mm Philips #000 (perpendicular cross) screws with the Philips #000 screwdriver.
- ⚠ Push the screwdriver firmly into the screw so that the driver will not strip the screw.

## Step 2



- Unscrew the three 4.5mm #000 Philips screws on the sides of the camera using the Philips #000 screwdriver.

## Step 3

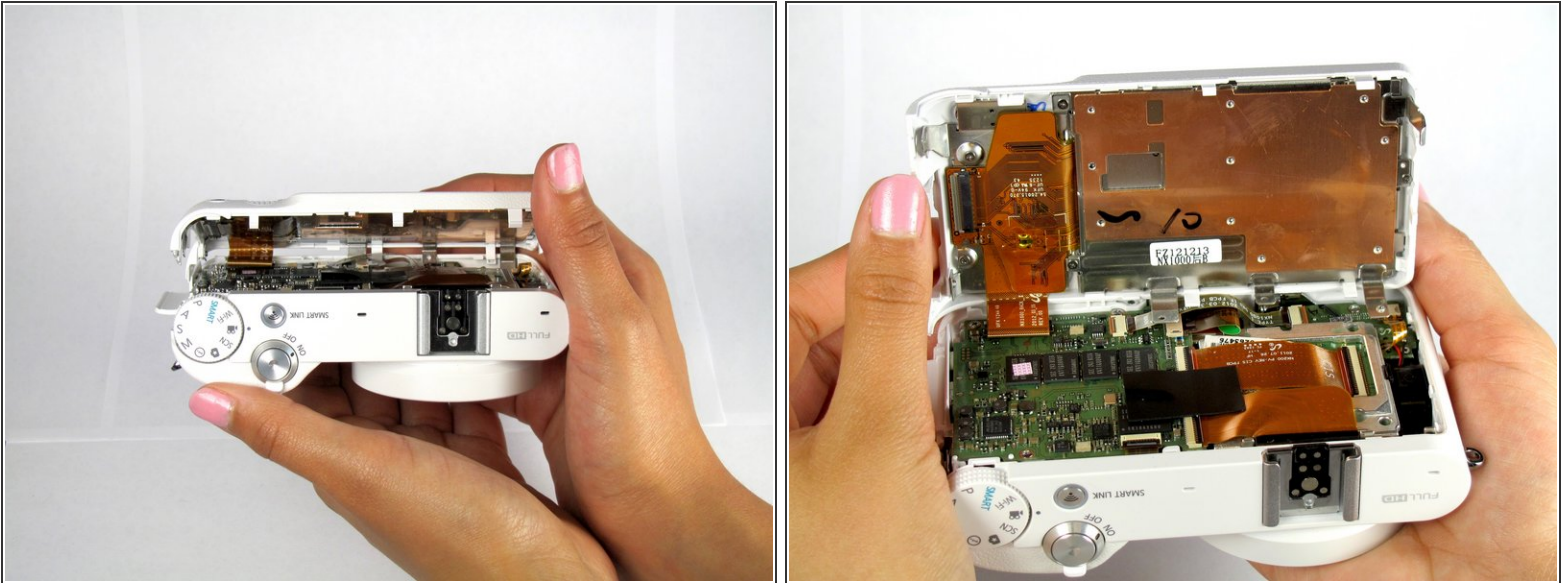


- Pry open the back panel using the metal spudger.

**⚠** Do not completely separate the back panel from the camera. There is a ribbon on bottom left back corner underneath the buttons. The ribbon will hold the back panel to the camera. Do not jam the tool in this part or the ribbon will rip.



## Step 4



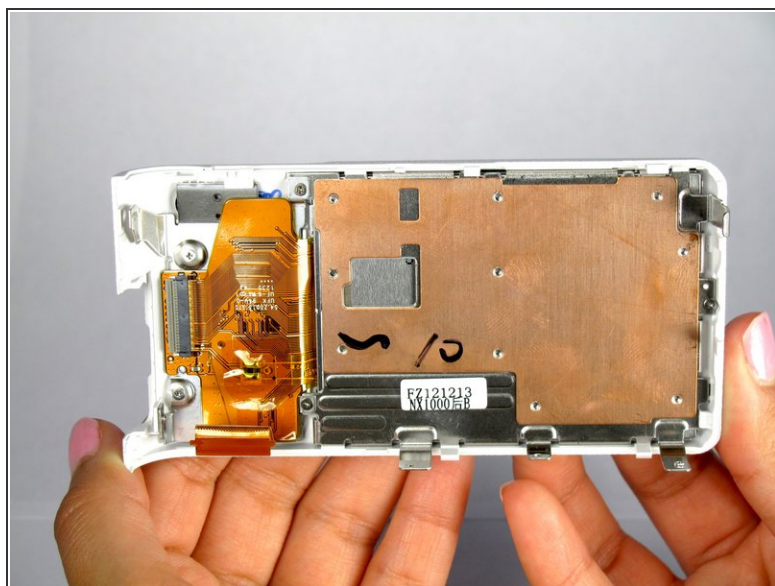
- Open the two halves of the camera, taking care not to disturb the ribbon cable.
- ⚠ Do not completely separate the halves. The ribbon cable needs to be disconnected from the ZIF connection carefully as shown in the next step

## Step 5



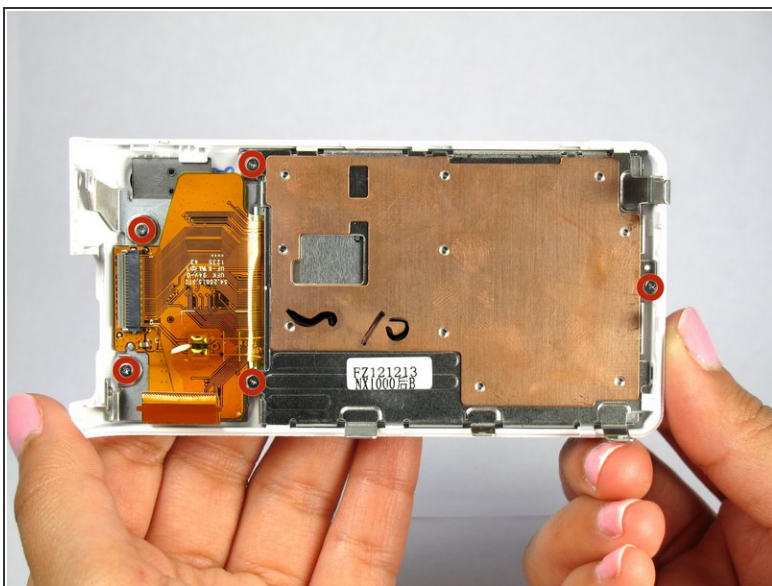
- Remove the ribbon by lifting the grey tab on the ZIF connector with the metal spudger.
- Push the ribbon out of its socket with the plastic opening tool.

## Step 6



- Completely separate the back panel from the camera.

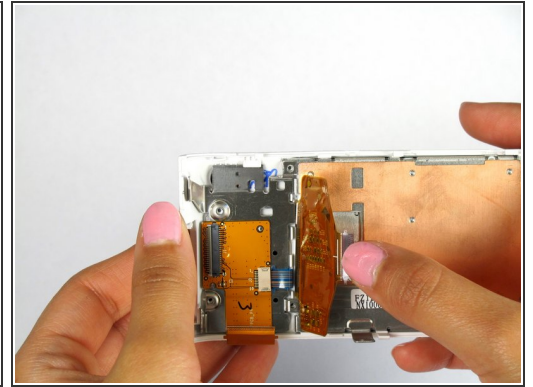
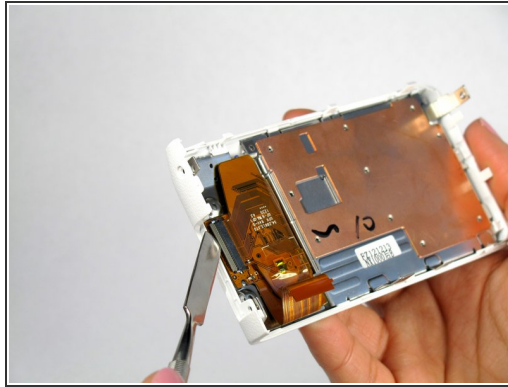
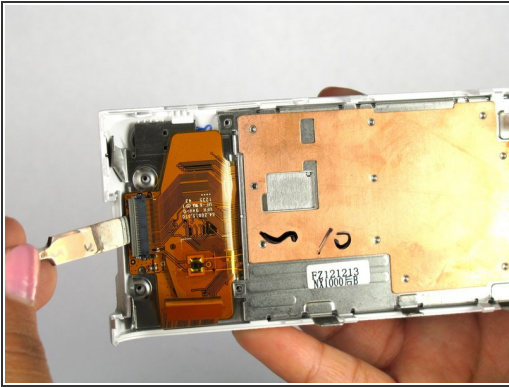
## Step 7 — Back Panel Components



- Remove all five 3mm Philips #000 screws from the inside of the back panel using the Philips #000 Screwdriver.

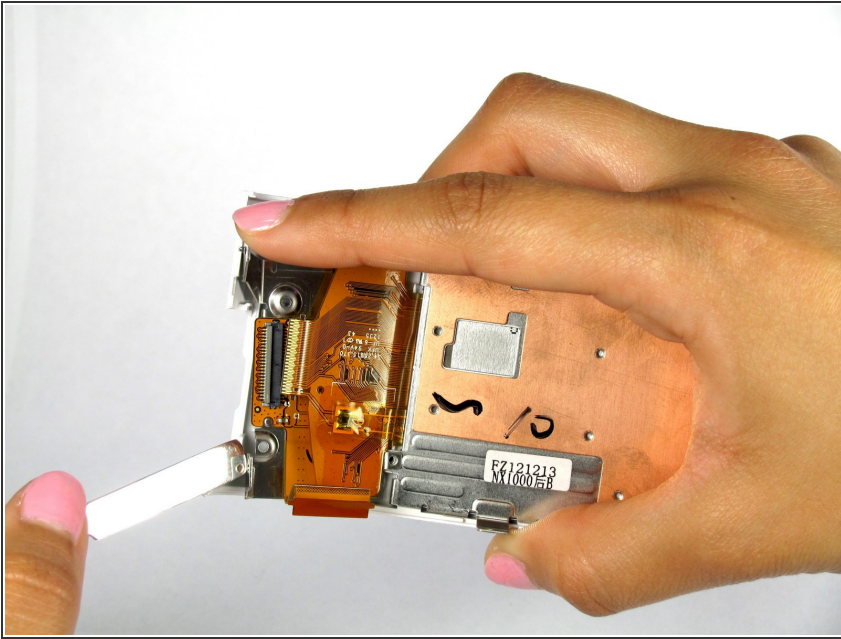


## Step 8




- Lift up the grey tab on the ZIF connector with the spudger to remove the ribbon.
- Using both thumbs push the ribbon out of the ZIF connection.

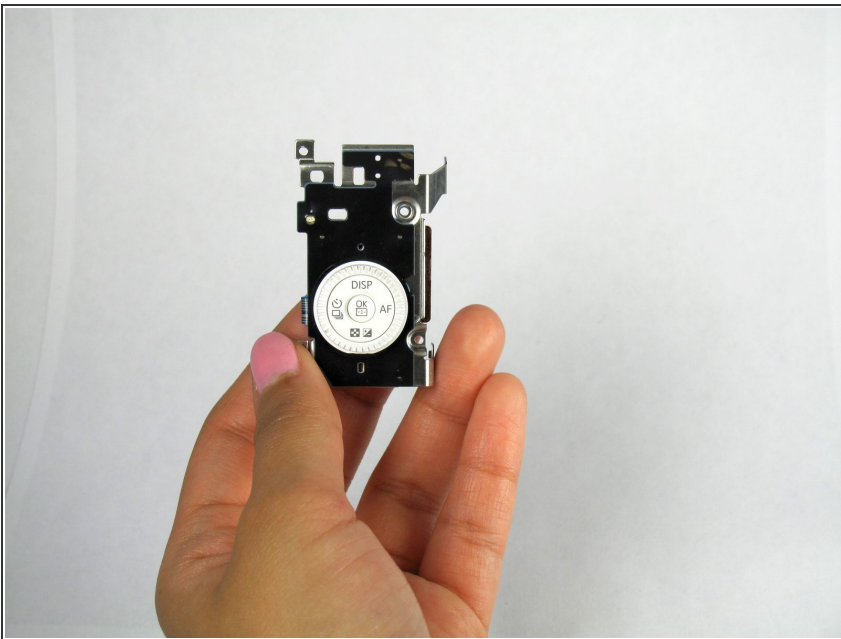
## Step 9



- Use the metal spudger to pick the bottom of the plastic piece while simultaneously using your index finger to push down on the larger metal slab. This will cause the metal plate with the large ribbon to slide down and out of the plastic back panel.

 Do not disconnect the blue ribbon.

## Step 10 — Menu Button



- Remove the button assembly from the back panel

To reassemble your device, follow these instructions in reverse order.