



# Aiptek Pocket DVII 1.3M LCD Lens Replacement

This guide will take you through how to replace your lens.

Written By: Gyoza Aba Hivatal



## INTRODUCTION

If your lens is cracked or broken, follow these step by step instructions to replace it.

## Step 1 — Lens



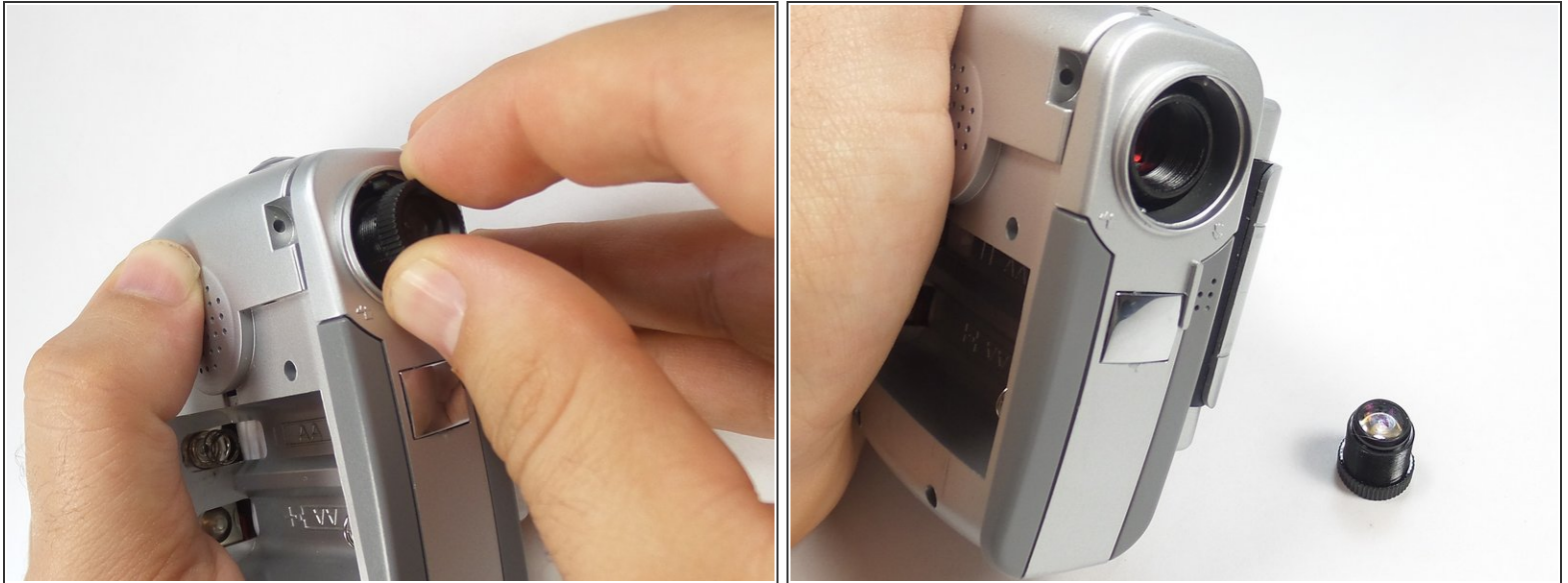
- Remove the battery cover.
- Remove the batteries.

## Step 2



- Put a finger on the top and bottom of the lens cover and apply light pressure.
  - Pull the lens cover off the device.
- ⚠ Be careful not to break the cover. If it doesn't come off easily try turning the cover while pulling.

## Step 3



- Unscrew the lens counter-clockwise until it comes out.
- Insert your new lens by screwing it back in clockwise.

To reassemble your device, follow these instructions in reverse order.