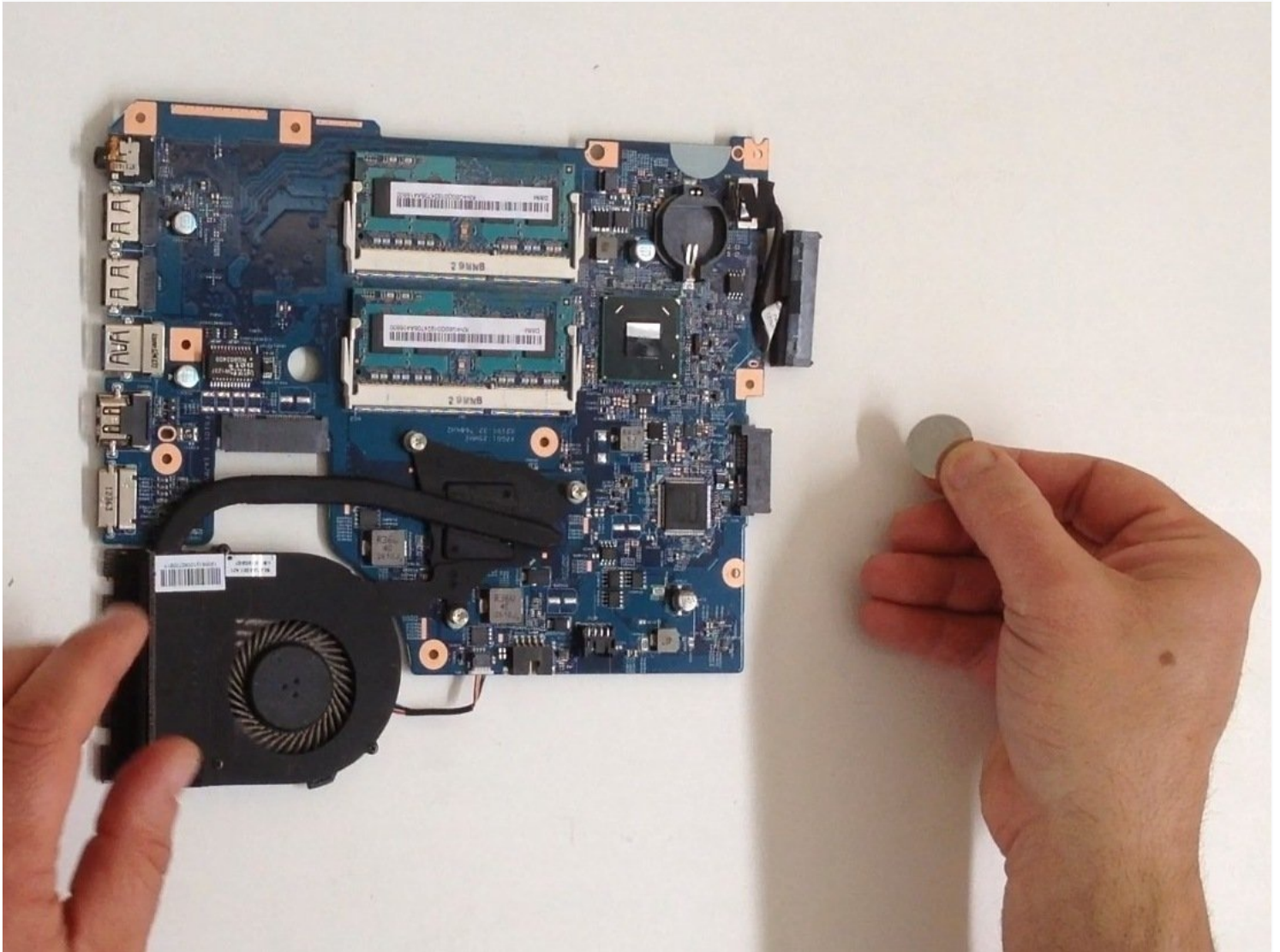




Acer Aspire V5-571 CMOS / Bios Battery Replacement

How to replace the CMOS / BIOS Battery...

Written By: ZFix



INTRODUCTION

How to replace the CMOS / BIOS Battery

[video: <http://youtu.be/mrKPisD7H0U>]

TOOLS:

Phillips #0 Screwdriver (1)
iFixit Opening Tool (1)
iFixit Opening Picks (Set of 6) (1)
Spudger (1)

PARTS:

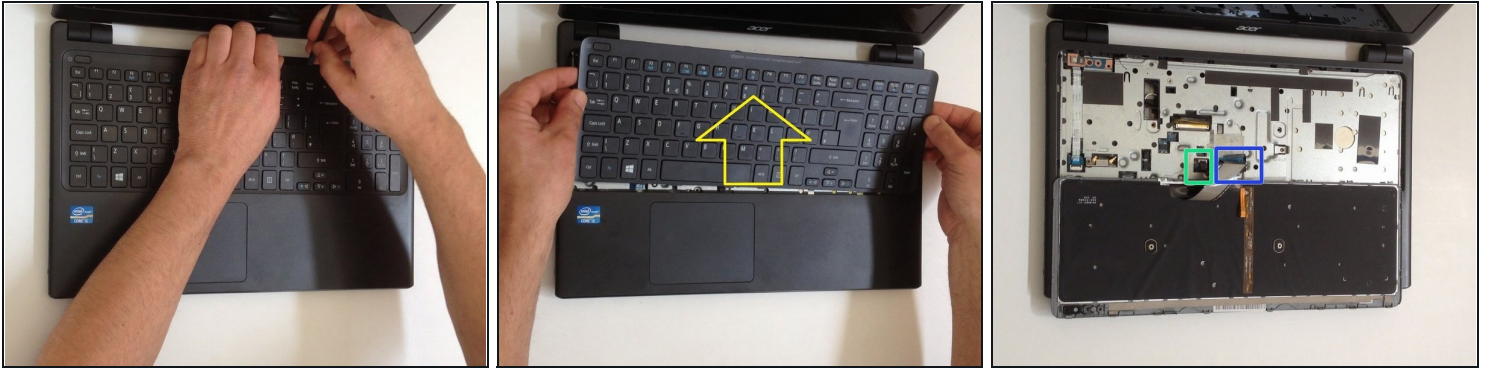
CR2032 Lithium Battery (1)

Step 1 — Keyboard



- Turn off the laptop and remove the battery.
- Remove two screws securing the Keyboard.
- The Keyboard is held by two locking clips, under the battery. Use the sharp tip of a plastic tool to release the keyboard.

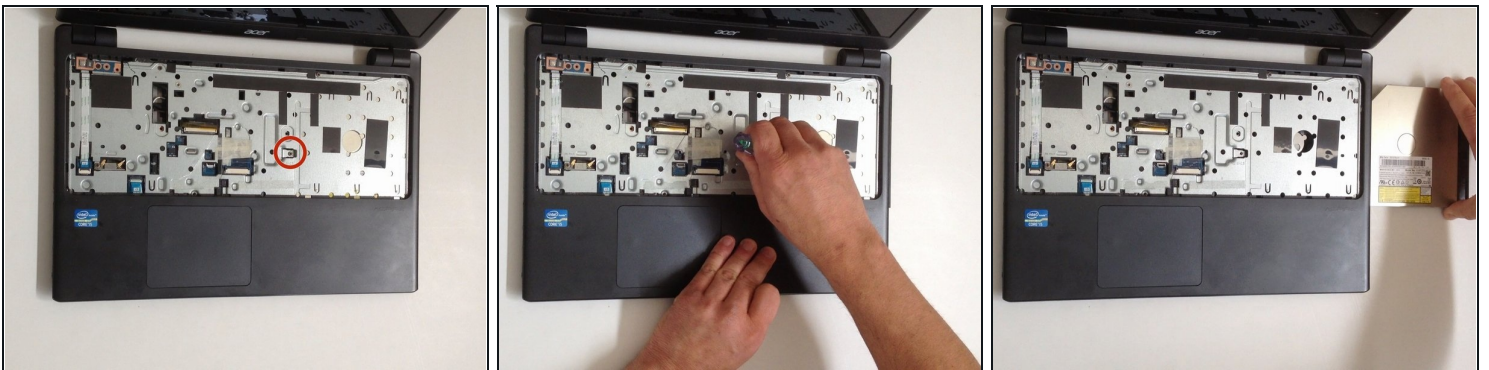
Step 2



- Remove the Keyboard and disconnect the two flex cables:
 - Keyboard flex cable
 - Keyboard Light flex cable

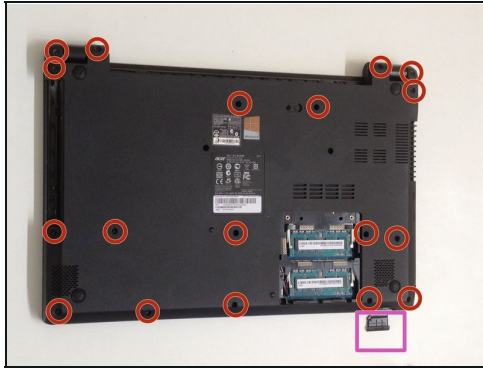
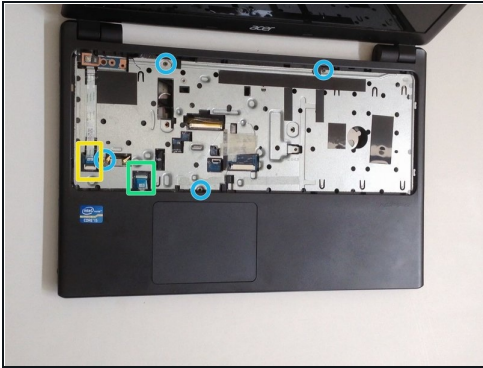
★ [Please SUBSCRIBE to my channel ツ](#)

Step 3 — Optical Drive



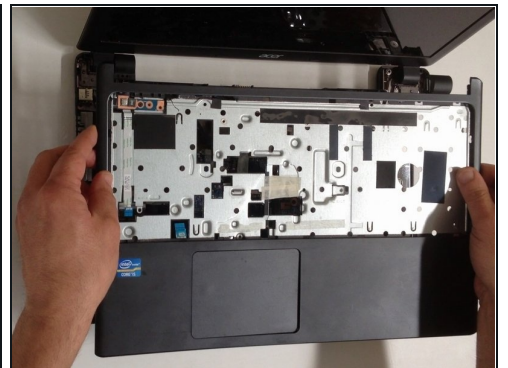
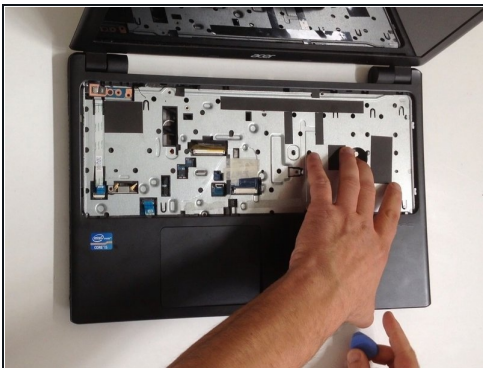
- Remove the screw securing the Optical drive and gently press the drive to show slightly as at the second pic.
- Slide the drive to the left and remove it.

Step 4 — Upper Cover



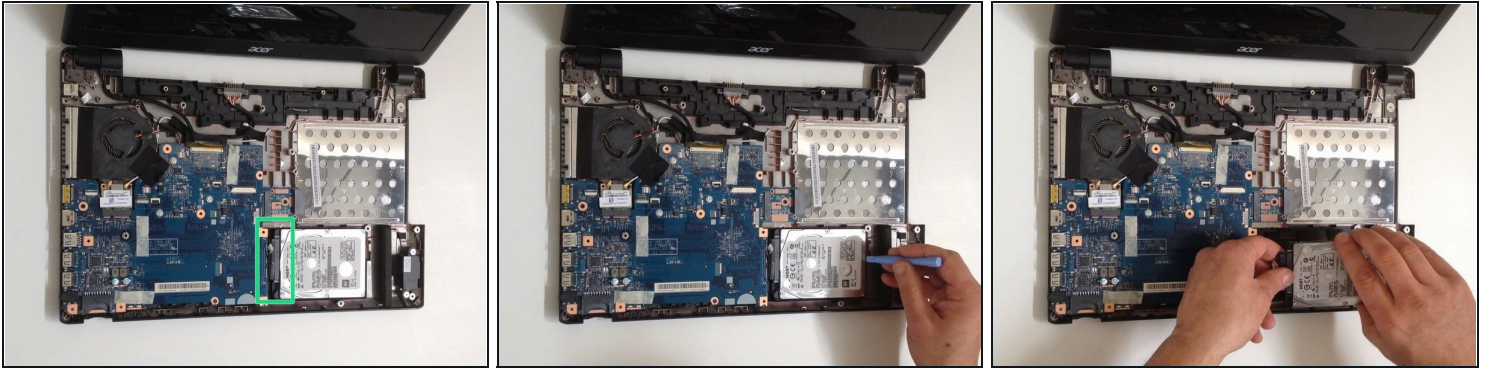
- Remove 4x phillips screws and disconnect:
- Power On button flex cable
- Touch pad flex cable
- Remove 18x Phillips screws from the bottom cover.
- Remove any memory SD Card from the Card reader.
- Start opening with a plastic opening tool.

Step 5



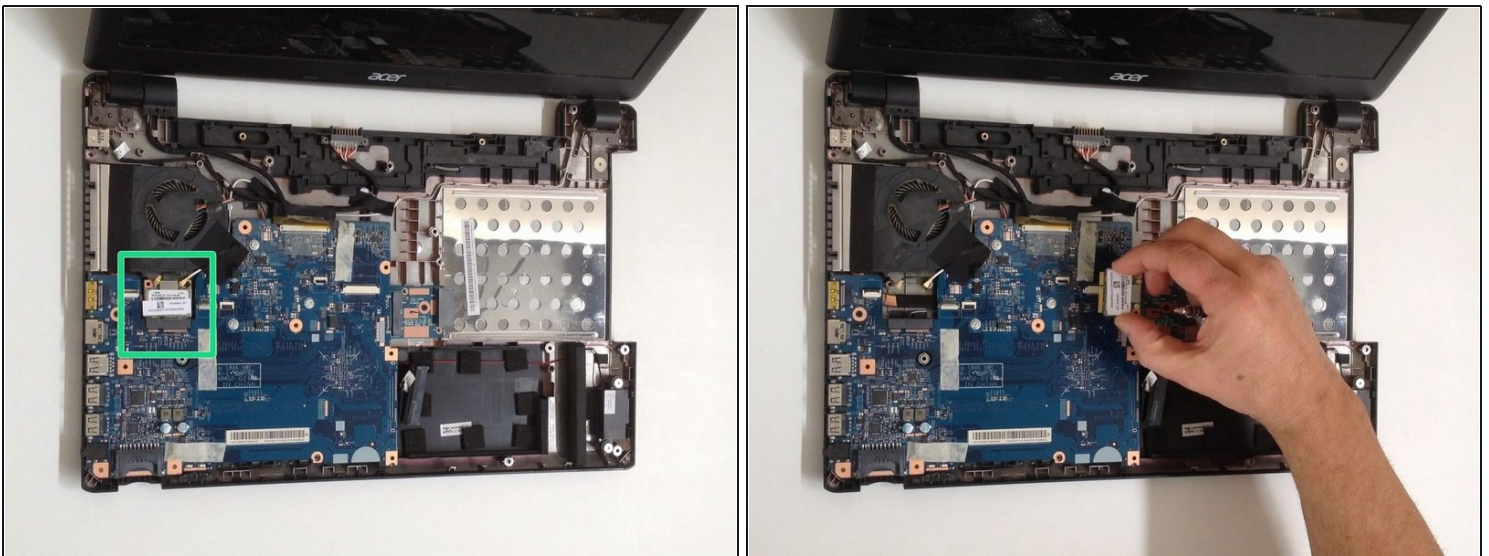
- Carefully separate the upper cover and remove it.

Step 6 — HDD (Hard Disk Drive)



- Gently remove the HDD and disconnect the SATA cable from it.
- [Please SUBSCRIBE to my channel ツ](#)

Step 7 — Wi-Fi Half Mini PCIe card



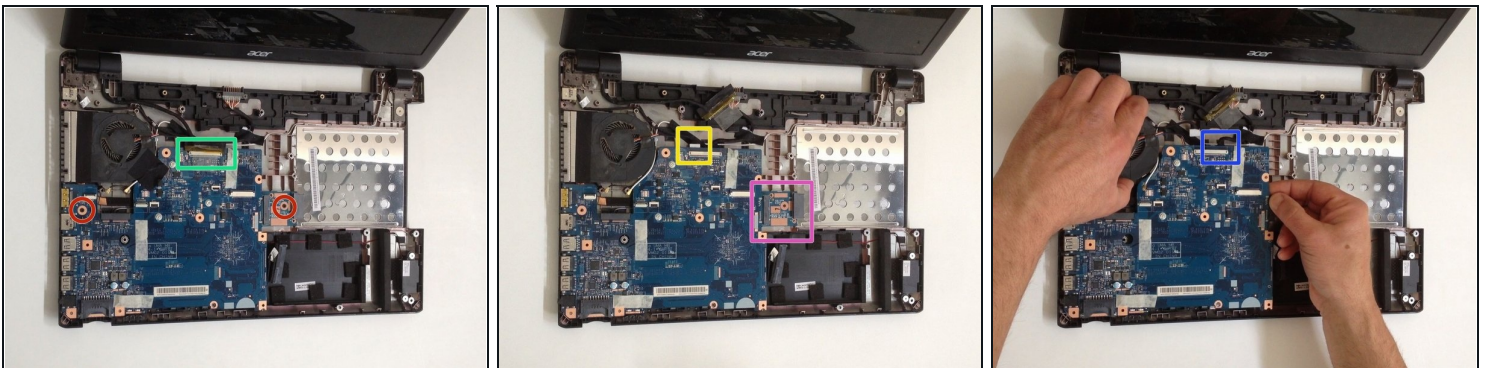
- Remove one Phillips screw, securing the WLAN card and disconnect the two coaxial antenna cables.
- Remove the Wi-Fi card.

Step 8 — Mother Board



- Remove the Memory Cover.
- Disconnect the Loudspeaker cable connector.

Step 9



- Remove two Phillips screw from the Mother board and from the Optical drive SATA adapter.
- Disconnect the LCD Display flex cable.
- Disconnect the DC Jack cable.
- Carefully remove the Optical drive SATA adapter.
- We will disconnect the battery cable when we pick up the board.

To reassemble your device, follow these instructions in reverse order.