



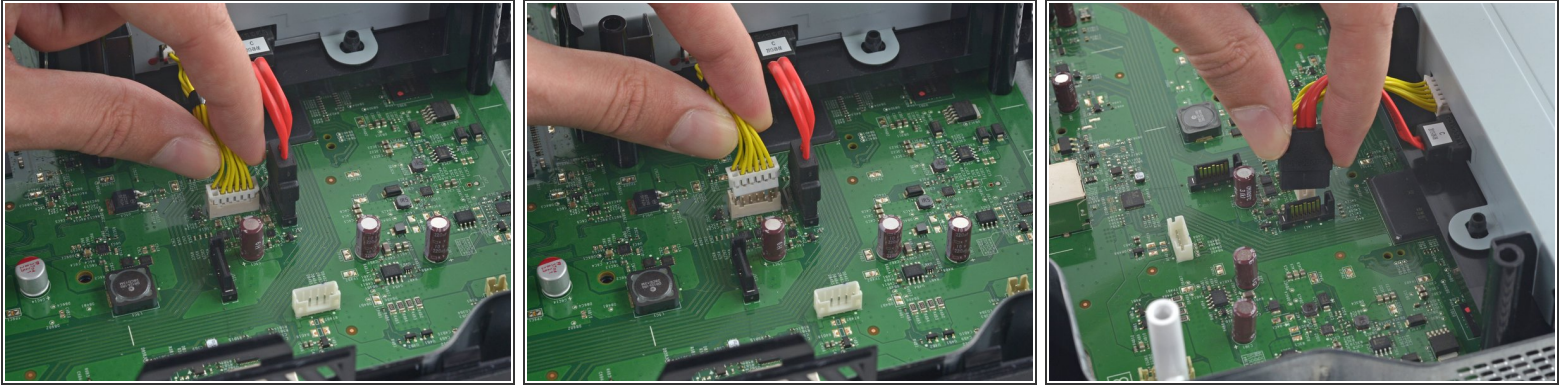
# Xbox One Optical Drive Assembly Replacement

Prereq only, used before fan and motherboard guides

Written By: Andrew Optimus Goldheart



## Step 1 — Optical Drive Assembly



- Disconnect the optical drive power and SATA data cables from the motherboard.

## Step 2



- Remove the optical drive assembly from the Xbox.

To reassemble your device, follow these instructions in reverse order.