



Disassembling Sony Action Cam HDR-AS15

Circuit Board

This guide will show you how to access the internal circuit board of the Sony HDR-AS15. This is not a replacement guide.

Written By: Scott Scarpinato



INTRODUCTION

You will take apart the camera case to access the circuit board after removing the battery. Be ready to handle small parts and screws.

TOOLS:

- [Phillips #00 Screwdriver](#) (1)
 - [Tweezers](#) (1)
 - [iFixit Opening Tool](#) (1)
-

Step 1 — Battery



- To access the battery, gently pry open the rear cover of the action cam.

Step 2



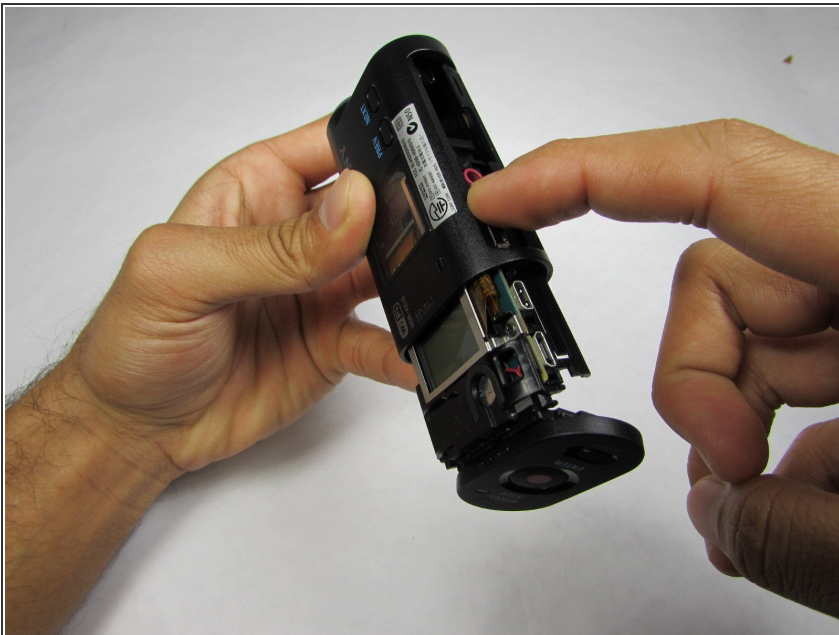
- Using a pair of tweezers, firmly grip the protrusion where the PULL signifies and remove the tray and battery.

Step 3 — Disassembling Sony Action Cam HDR-AS15 Circuit Board



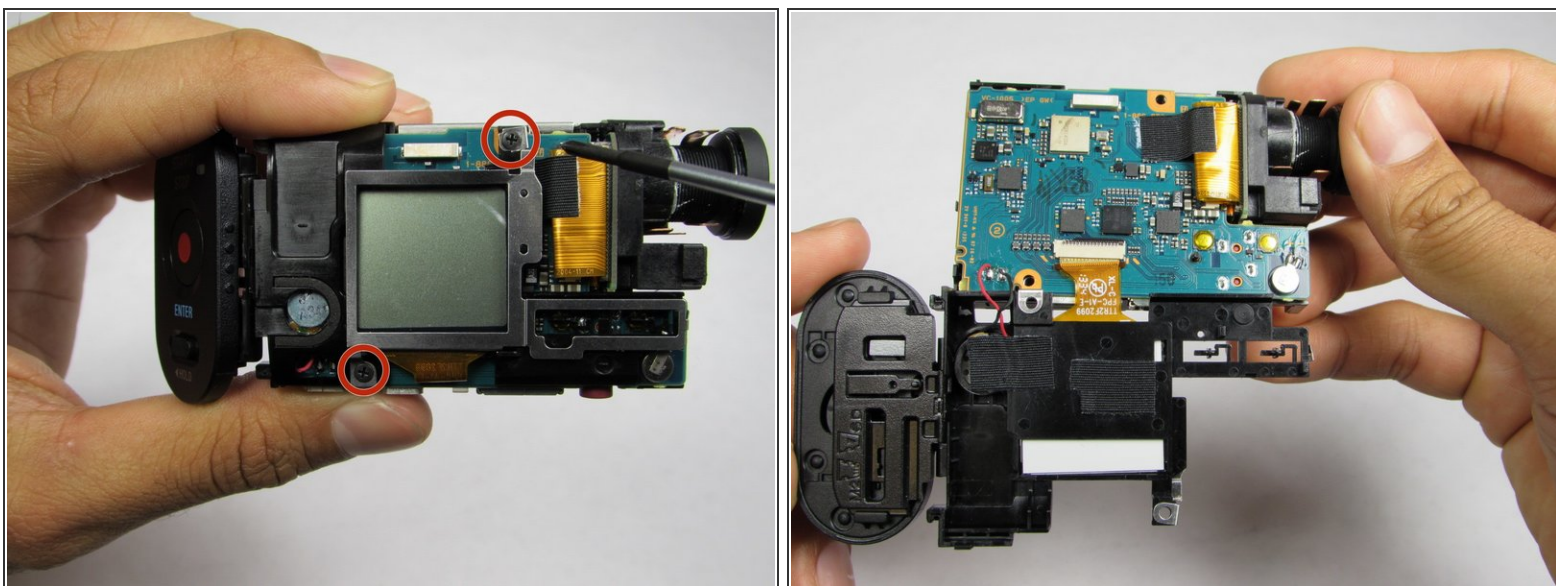
- Open the bottom tab with your finger or a plastic opening tool.
- Pull the tab out, not up, to remove it completely.
- Remove the two screws from the device.
- Use your fingers to remove the plastic plate.

Step 4



- Separate the outer casing from the electronics by pushing on one of the ports toward the back end of the case. The electronics should slide right out.

Step 5



- Remove the two 6.4 mm screws on the LCD side of the device using a Phillips #00 screwdriver.
- Flip the LCD display downward to reveal the circuit board.

To reassemble your device, follow these instructions in reverse order.