



Disassembling LG 440G Rear casing

How to remove the LG 440G rear casing.

Written By: Emily Class



INTRODUCTION

This guide shows how to disassemble the rear casing on a LG 440G to access the electronics.

This disassembly requires 2 tools, a Phillips #00 screw driver and an opening tool.



TOOLS:

- [Phillips #00 Screwdriver](#) (1)
 - [iFixit Opening Tool](#) (1)
-

Step 1 — Turn off phone.



- Turn the device off.
- To do so, press and hold the red button.

Step 2 — Flip phone.



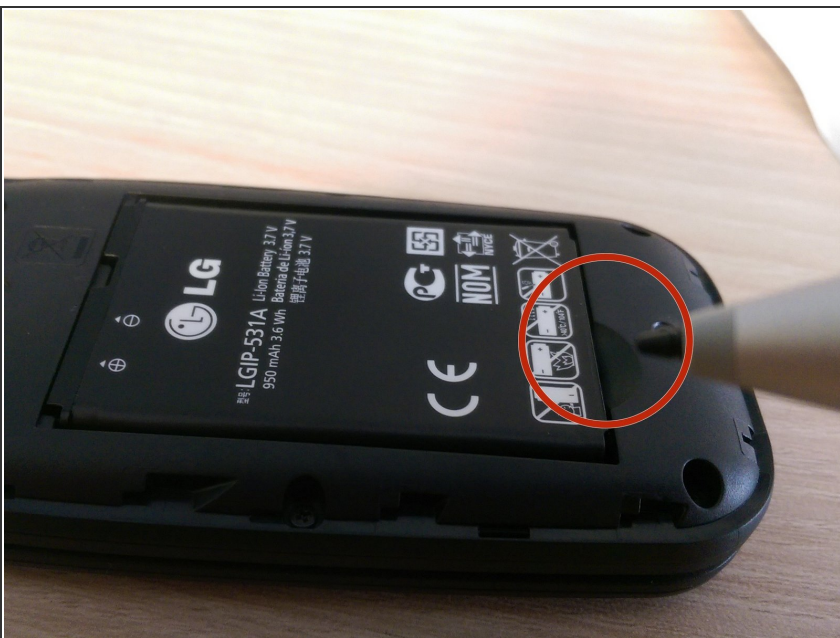
- Flip the phone over.

Step 3 — Rear cover removal.



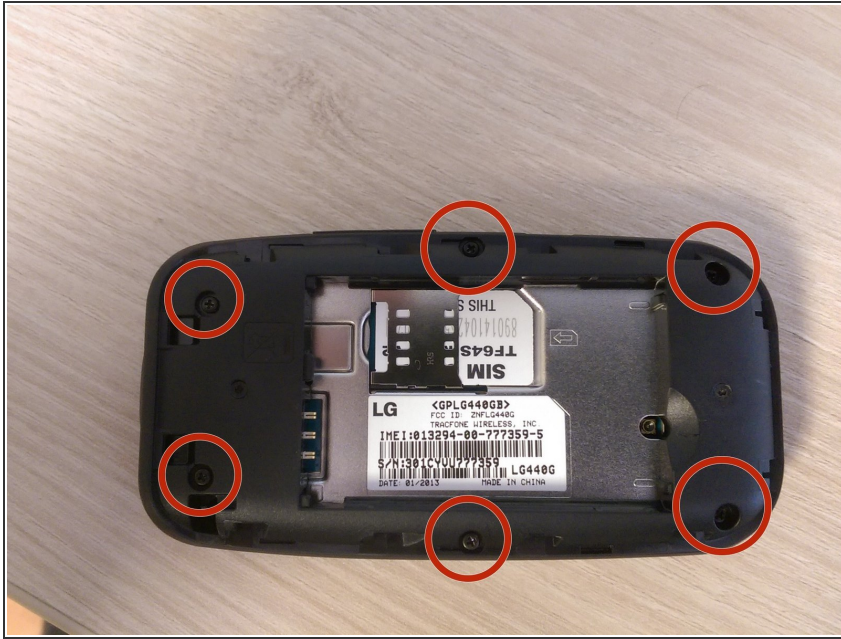
- Slide the rear cover downward
- Lift it off to access the battery

Step 4 — Removal of battery.



- Locate the small rounded recess to get access to the battery
- Gently, lift the battery

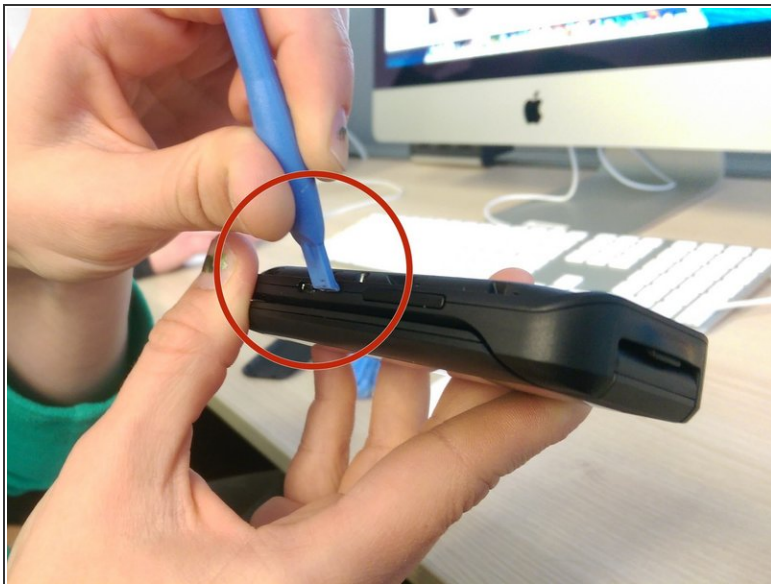
Step 5 — Unscrew six screws along edges of casing



- Use a Phillips #00 screw driver to remove six screws.

ⓘ Save screws for reassembly.

Step 6 — Lift casing cover



- Run the plastic opening tool along the edge of the phone to release the casing cover.
- Lift the casing cover.

To reassemble your device, follow these instructions in reverse order.