



Optoma HD20 Focal Lens Replacement

Device images not appearing clear? Try replacing the focal lens with a new one.

Written By: Trevor



INTRODUCTION

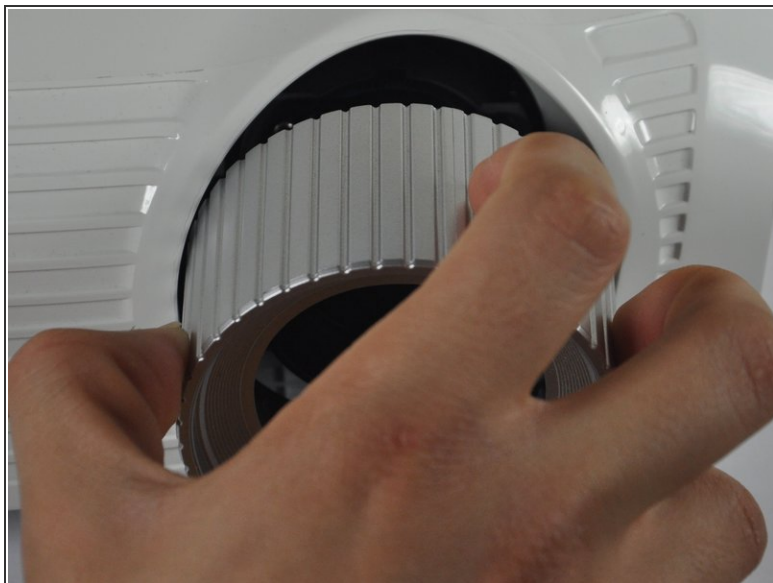
Use this guide to remove the focal lens from your Optoma HD20.



TOOLS:

- [Phillips #1 Screwdriver](#) (1)
 - [iFixit Opening Tools](#) (1)
-

Step 1 — Disassembling Optoma HD20 Cover



- Twist the focal cap clockwise until it is fully extended.
- Remove the focal cap by pulling it straight out.

Step 2



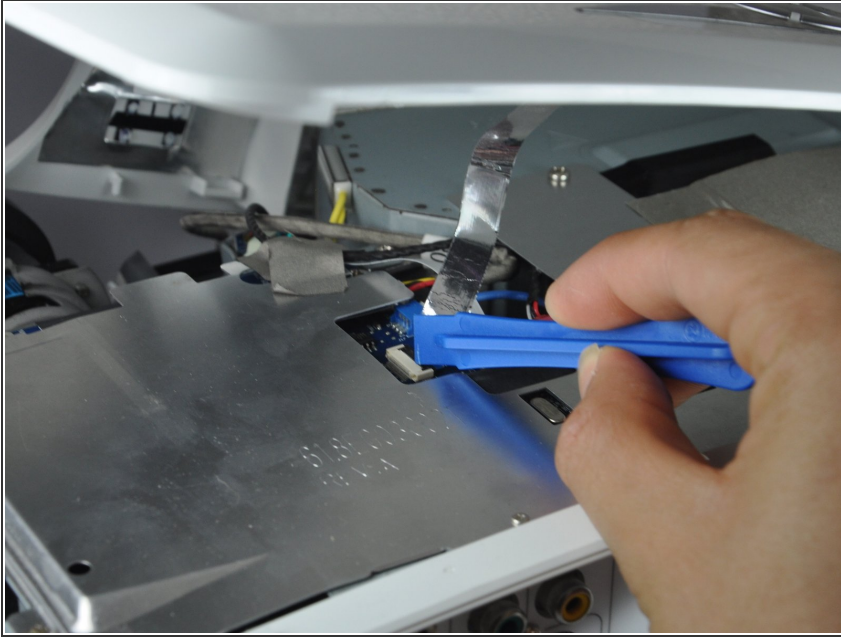
- Use a Phillips #1 screwdriver to remove the three 7.5mm screws on the bottom of the device.


Step 3



- Use a plastic opening tool to gently pry the top cover off of the device.
- ⓘ It is easier to pry off the cover from the back side just above the HDMI ports.

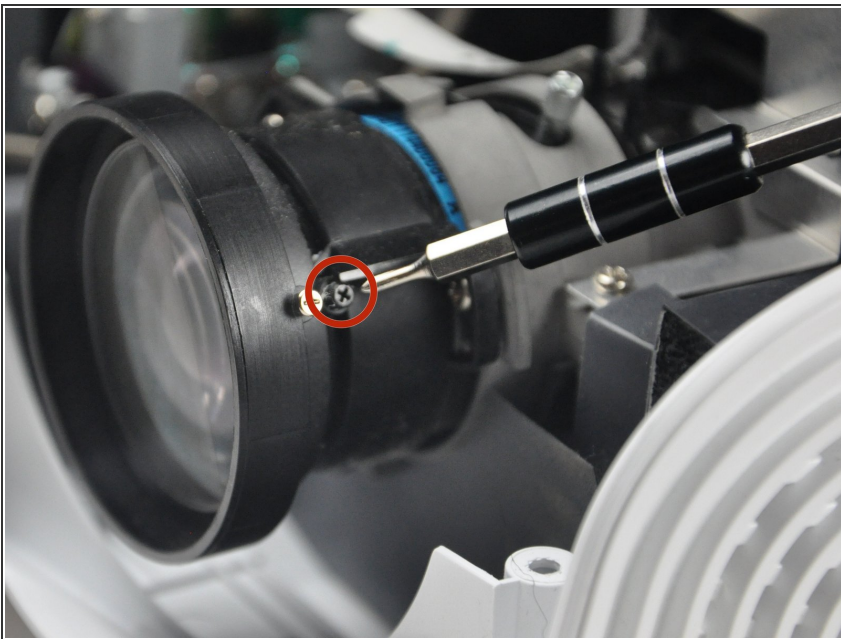
Step 4



 When removing the cover, be cautious of the ribbon connecting the top buttons to the main circuit board. The ribbon must be disconnected before proceeding.

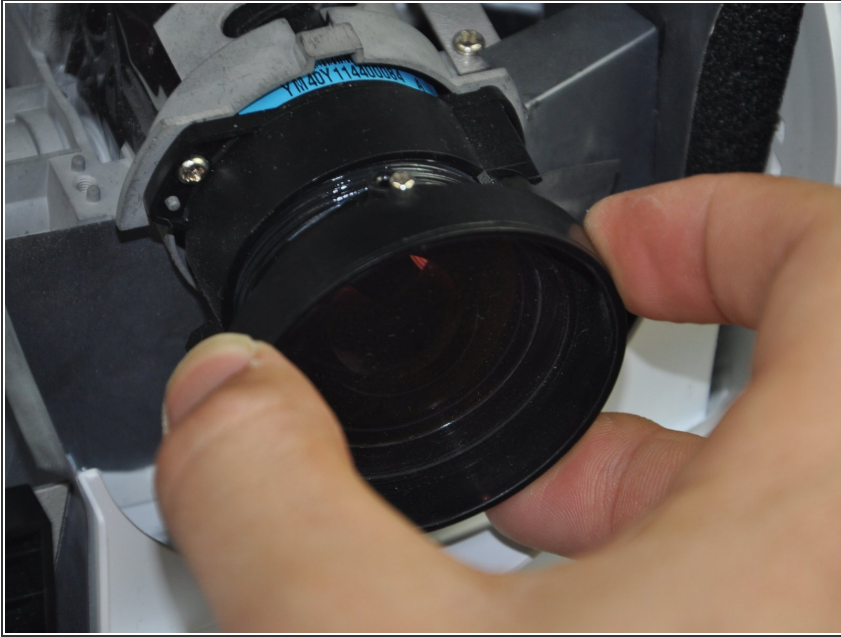
- Remove the ribbon by disconnecting it from the main circuit board.
- Lift up the clip holding it down and pull the ribbon out.

Step 5 — Focal Lens



- Use a Phillips #1 screwdriver to unscrew the small black 2 mm screw on the side of the focal lens.

Step 6



- Remove the focal lens by twisting it clockwise until it comes off.

To reassemble your device, follow these instructions in reverse order.