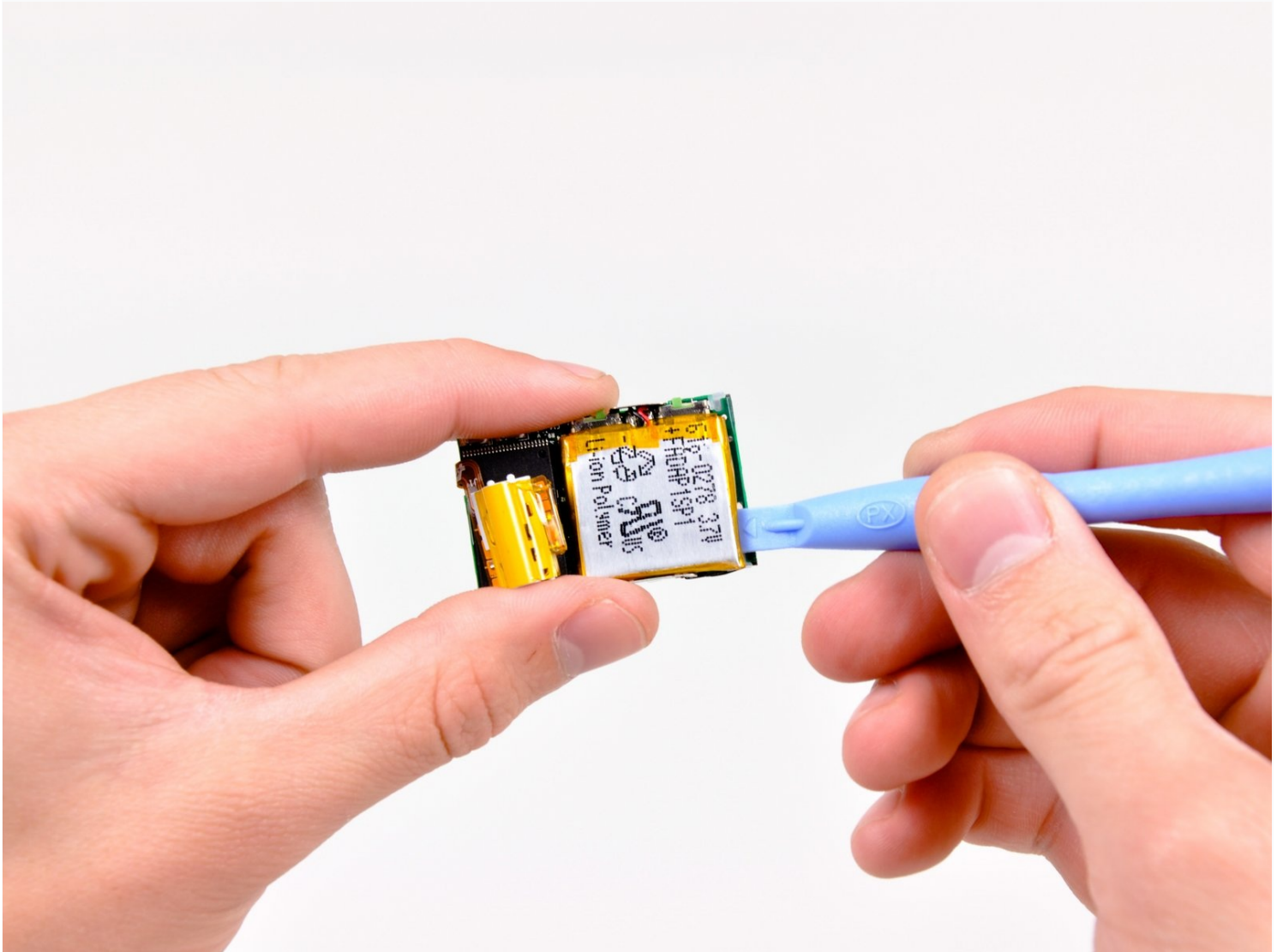




iPod Shuffle 2nd Generation Battery Replacement

Use this guide to replace your Shuffle's...

Written By: Andrew Bookholt



INTRODUCTION

Use this guide to replace your Shuffle's battery. Replacing the battery requires a fine-tipped soldering iron and knowledge of surface-mount soldering.

TOOLS:

[Phillips #00 Screwdriver](#) (1)
[Lead-Free Solder](#) (1)
[Soldering Iron](#) (1)
[Tweezers](#) (1)
[iFixit Opening Tool](#) (1)

PARTS:

[iPod Shuffle 2nd Generation Battery](#) (1)

Step 1 — Logic Board Assembly



- Before beginning, be sure your Shuffle is turned off as shown.

Step 2



- Use the edge of an iPod opening tool to pry the plastic cover off the headphone jack side of the Shuffle.
- Remove the plastic cover and set it aside.

Step 3



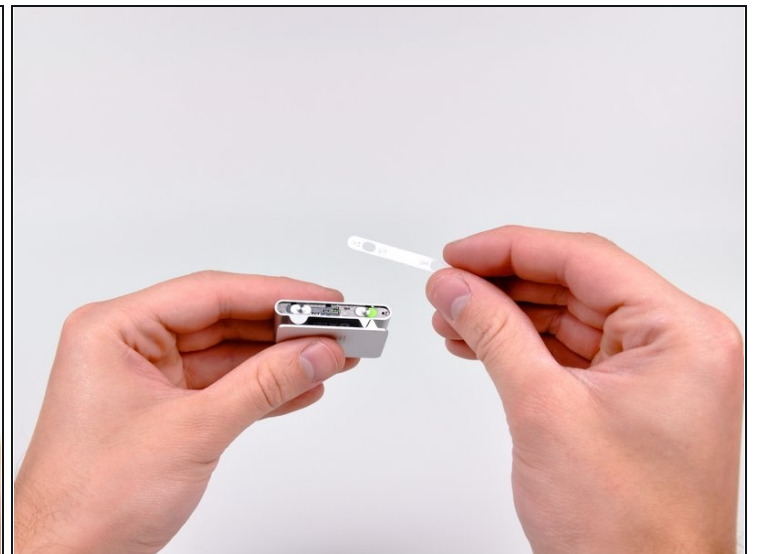
- Remove the two Phillips screws from the headphone jack side of the Shuffle.

Step 4



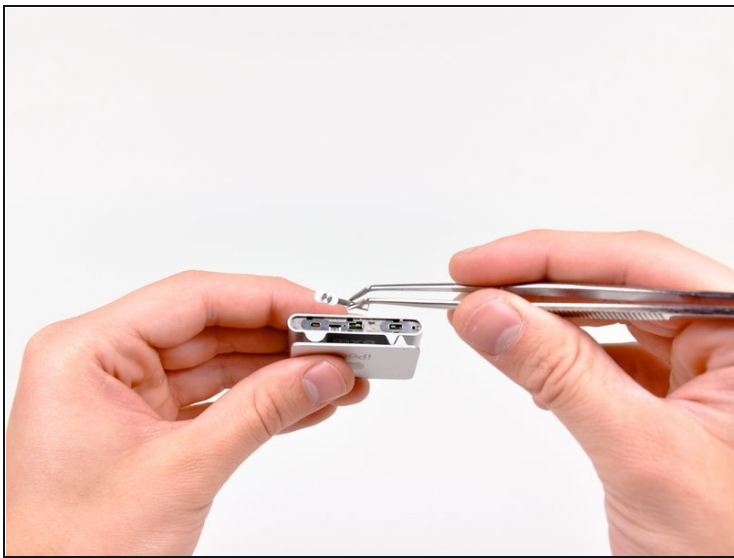
- Use the edge of an iPod opening tool to remove the steel cover from the headphone jack side of the Shuffle.

Step 5



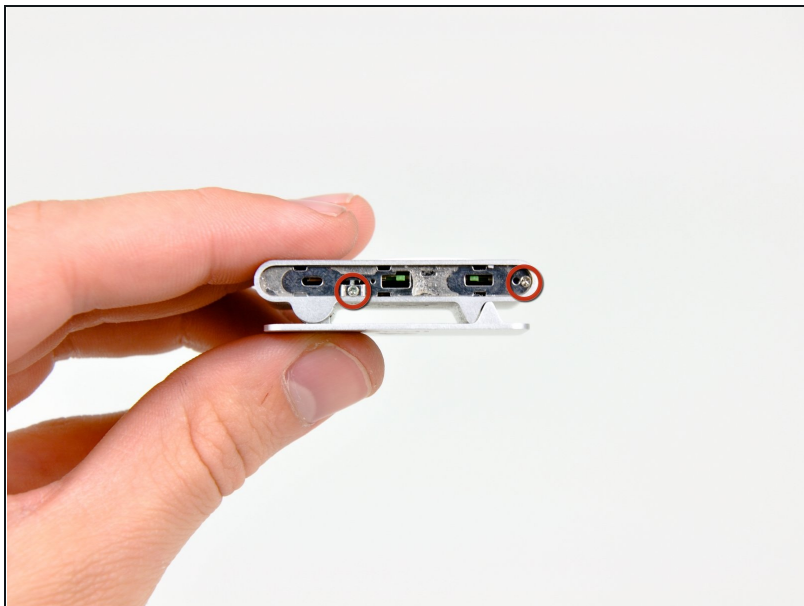
- Use the edge of an iPod opening tool to pry the plastic cover off the controls side of the Shuffle.
- Remove the plastic cover and set it aside.

Step 6



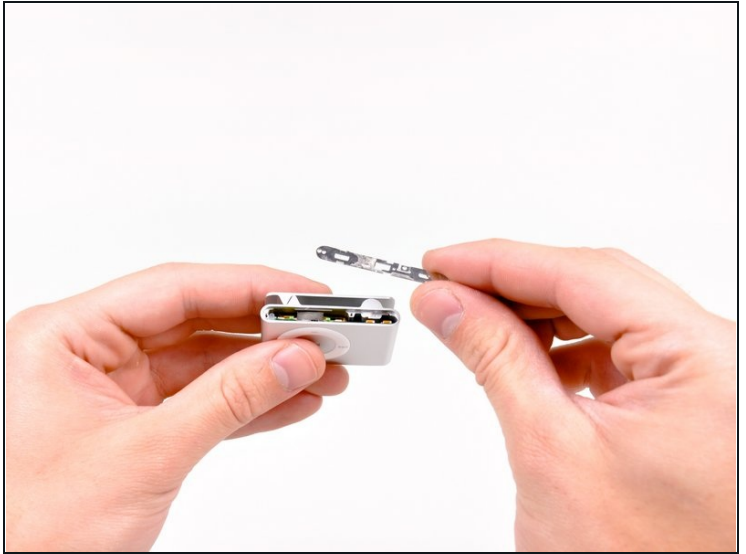
- Use a pair of [tweezers](#) to remove the hold and shuffle sliders from the Shuffle.

Step 7



- Remove the two Phillips screws on the controls side of the Shuffle.

Step 8



- Use the edge of an iPod opening tool to remove the steel plate from the controls side of the Shuffle.

Step 9



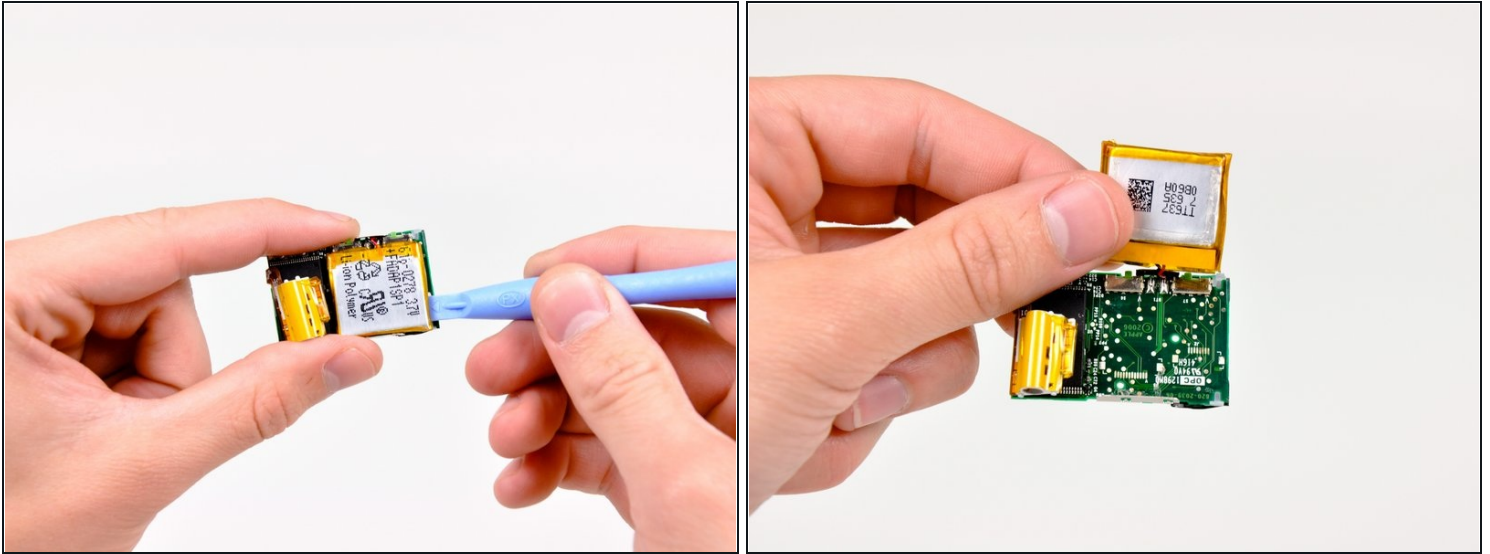
- Use the edge of an iPod opening tool to slightly pry the steel plate on the headphone jack side of the Shuffle away from the lip cut into the outer case.

Step 10



- Use your iPod opening tool to push the logic board assembly out of the outer case enough to grab the logic board by its edges.
- Pull the logic board assembly out of the outer case.

Step 11 — Battery



- Use the edge of an iPod opening tool to peel the adhesive under the battery that secures it to the logic board.
 - Flip the battery upwards to reveal the solder pads soldered to the logic board.
 - ⓘ Before desoldering the battery, be sure to scrape the protective resin off both solder points.
 - Desolder the battery from the logic board by heating up the solder joint with a soldering iron and simultaneously using a pair of [tweezers](#) to pull the battery wire away from the logic board.
- ⚠ Do not touch the + and - leads together.
- If you have never soldered before, we have a [guide](#) that makes it easy.

To reassemble your device, follow these instructions in reverse order.