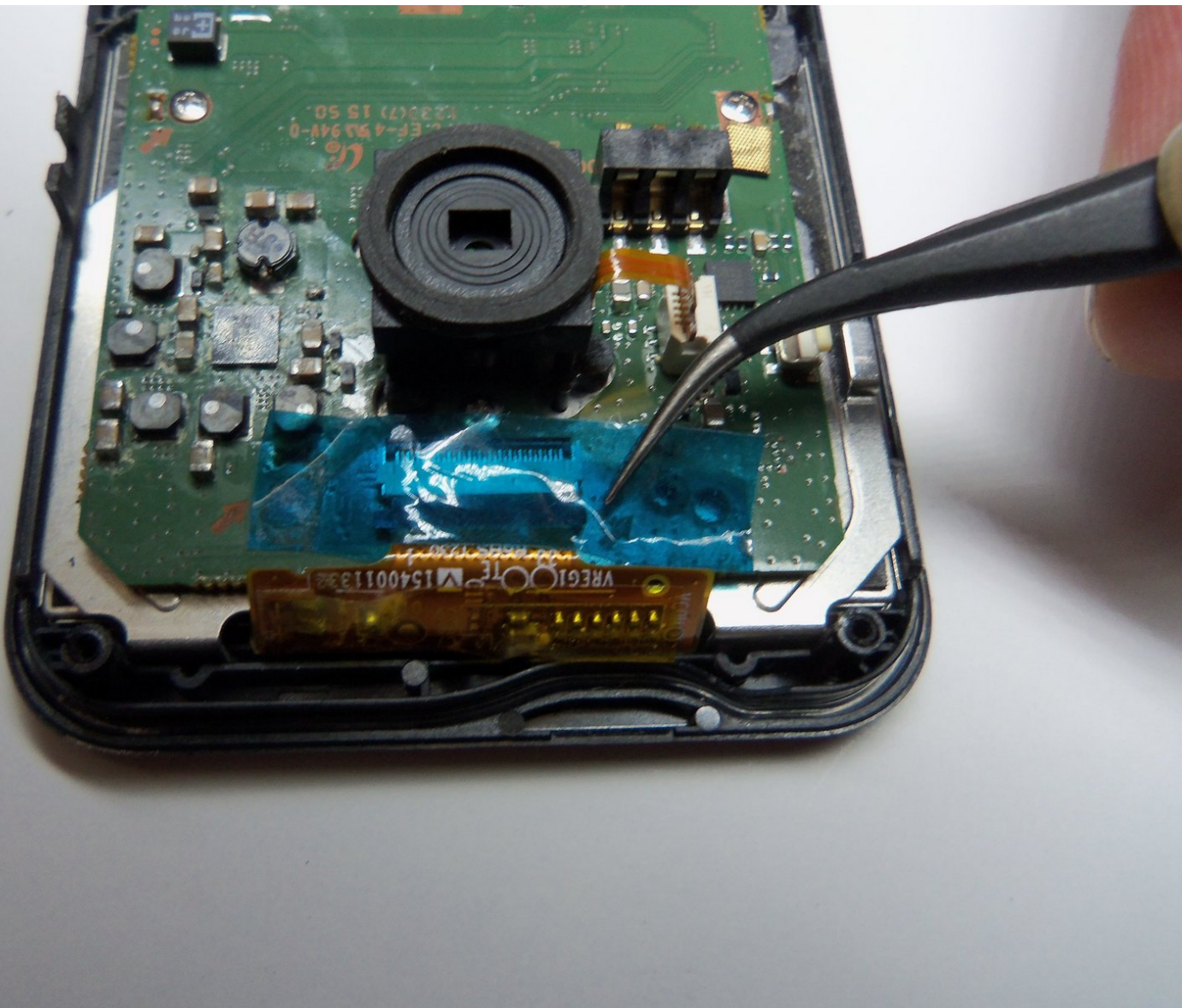




# Samsung HMX-W300 Motherboard Replacement

Shows how to replace motherboard with pictures...

Written By: Robert



## INTRODUCTION

Shows how to replace motherboard with pictures and words. Removal of motherboard requires opening the camera and unscrewing screws from motherboard to remove from rear case.



### TOOLS:

- [1.5mm Hex Screwdriver](#) (1)
  - [Phillips #00 Screwdriver](#) (1)
  - [iFixit Opening Tool](#) (1)
-

## Step 1 — Disassembling Samsung HMX-W300



- To remove the wristband of the device, grab the middle loop and pull the band through.

## Step 2



- Remove four screws with a Hex 1.5 mm screwdriver.

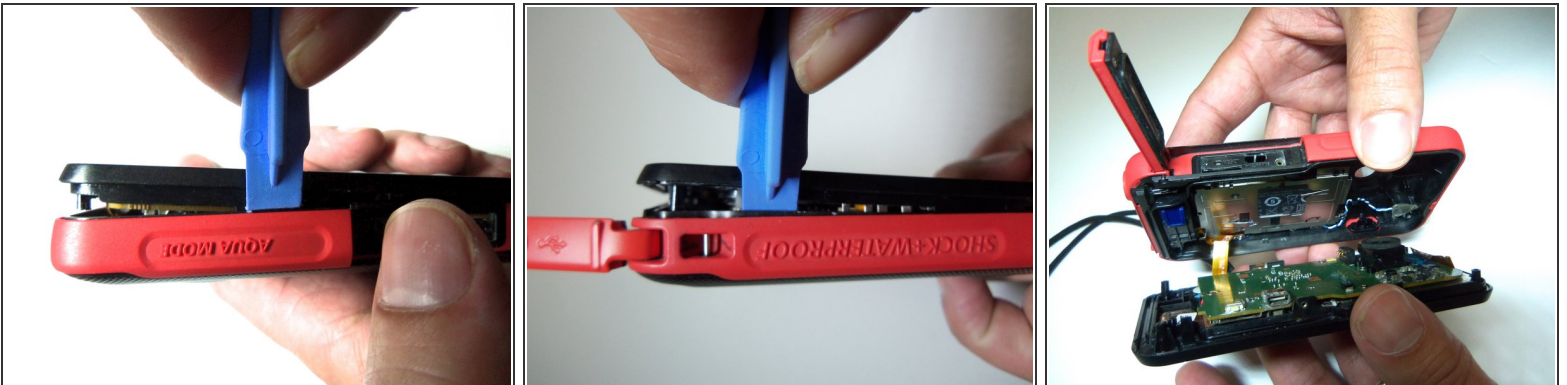


## Step 3



- Open the HDMI door on the side of the camera.
- Remove the single screw using a Phillips #00 screwdriver.

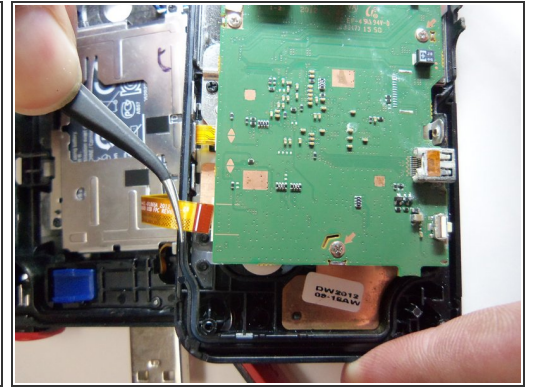
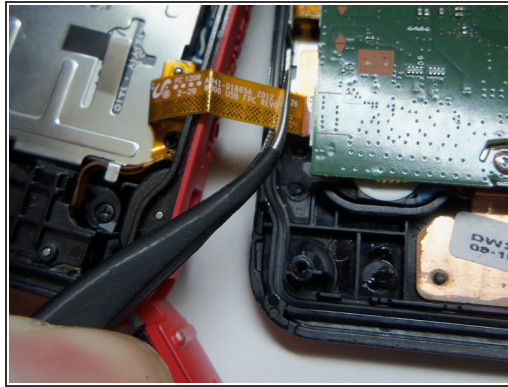
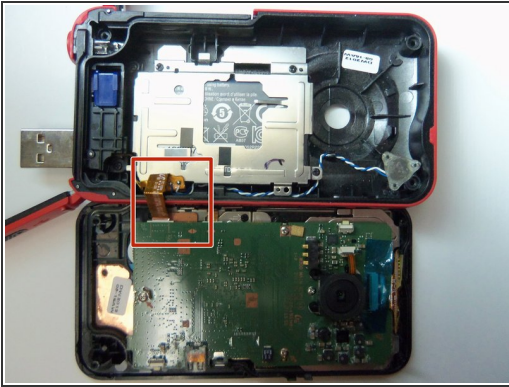
## Step 4



- Use the iFixit opening tool on both sides on the device. Pry apart both sections with light force.

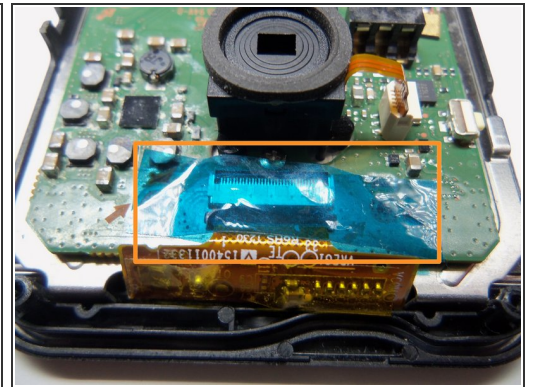
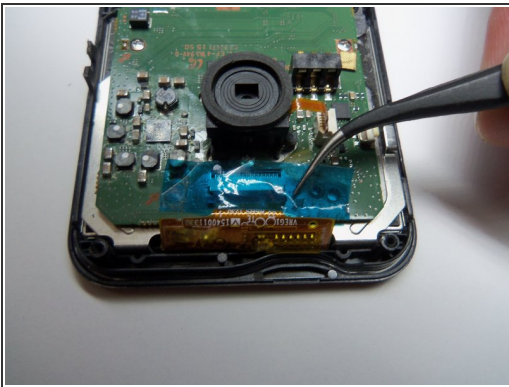
**⚠ Do not apply too much force. There is a wire that attaches the front case with the rear case that can be damaged.**

## Step 5



- Pull the wire ribbon out with a pair of tweezers.

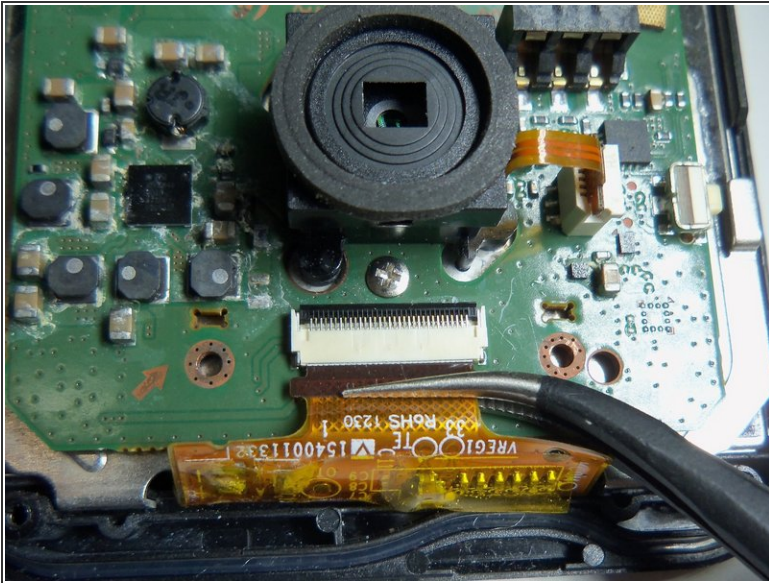
## Step 6 — Remove tape.



- Use tweezers to remove the tape.

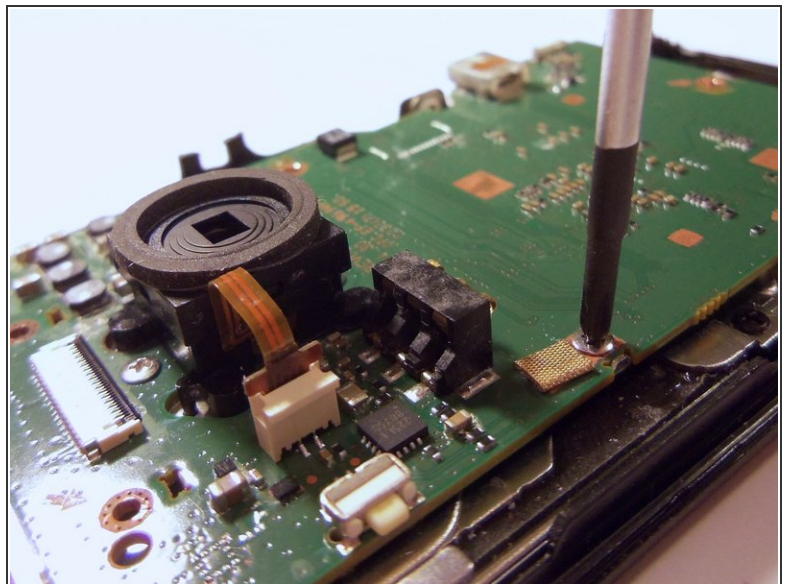
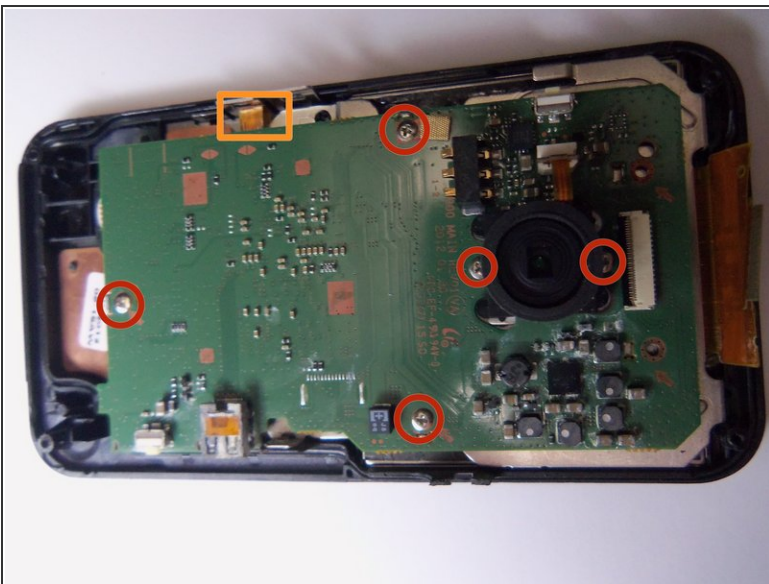


## Step 7 — Unplug wire ribbon.



- Use tweezers to grab the wire ribbon, then pull the wire out of connection.

## Step 8 — Remove screws.



- There are 5 Phillips size 00 screws. Remove all 5 screws.
- Wire ribbon is attached to the motherboard.



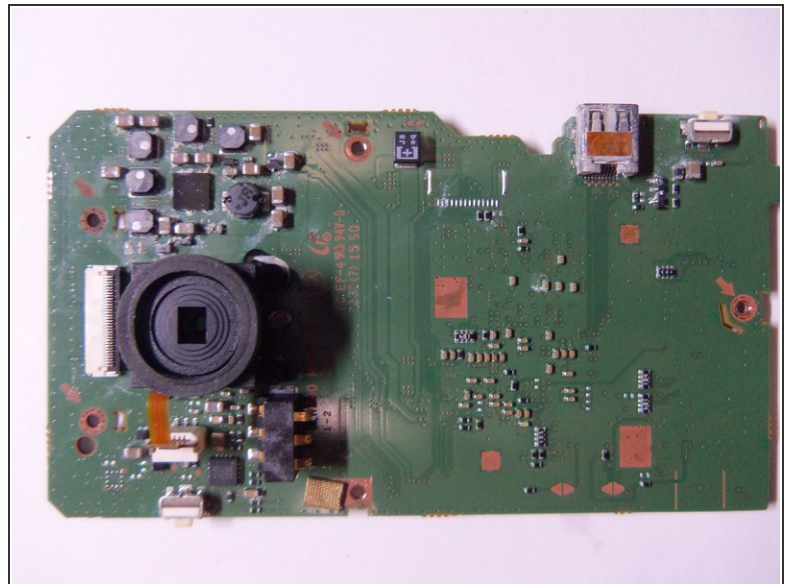
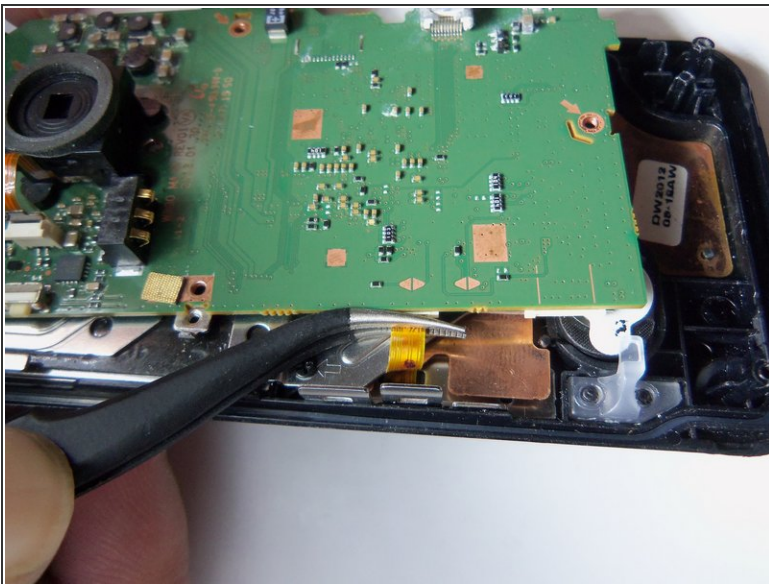
## Step 9



- Pry the motherboard up using the plastic opening tool.

⚠ Be careful there is a wire ribbon holding the motherboard.

## Step 10 — Disconnect wire ribbon.



- Use tweezers to disconnect the wire as shown. This will loosen the motherboard from the rear case.

To reassemble your device, follow these instructions in reverse order.

This document was generated on 2022-12-16 08:57:12 AM (MST).

