



# Optoma HD20 Light Bulb Replacement

Device image not powering on? Try replacing the light bulb with a new one.

Written By: Trevor



---

# INTRODUCTION

Use this guide to remove the light bulb from your Optoma HD20.



## TOOLS:

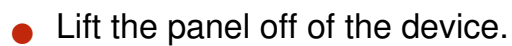
- [Phillips #1 Screwdriver](#) (1)
  - [Phillips #000 Screwdriver](#) (1)
  - [Tweezers](#) (1)
-

## Step 1 — Rear Panel

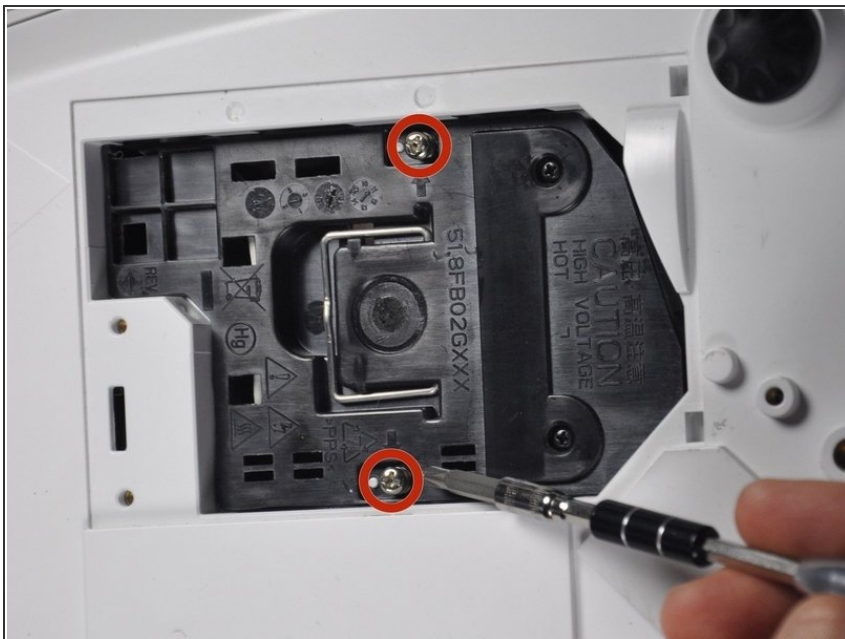


- Use a Phillips #1 screwdriver to loosen the screws that secure the panel on the bottom of the Optoma HD20.

## Step 2



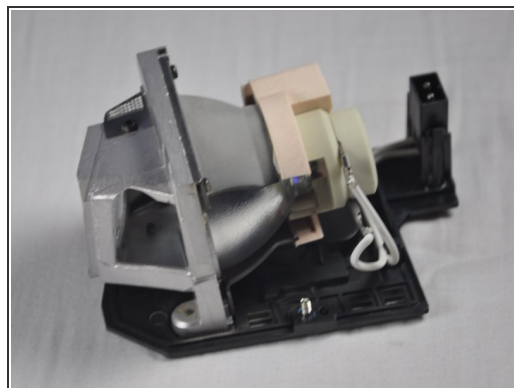
### Step 3 — Light Bulb Casing



- Use a Phillips #1 screwdriver to loosen the two screws securing the black casing.

**i** The screws don't come out all the way.

### Step 4



- Remove the light bulb casing from the device.

**i** Steps 5-9 are unnecessary if the replacement light bulb comes with housing.

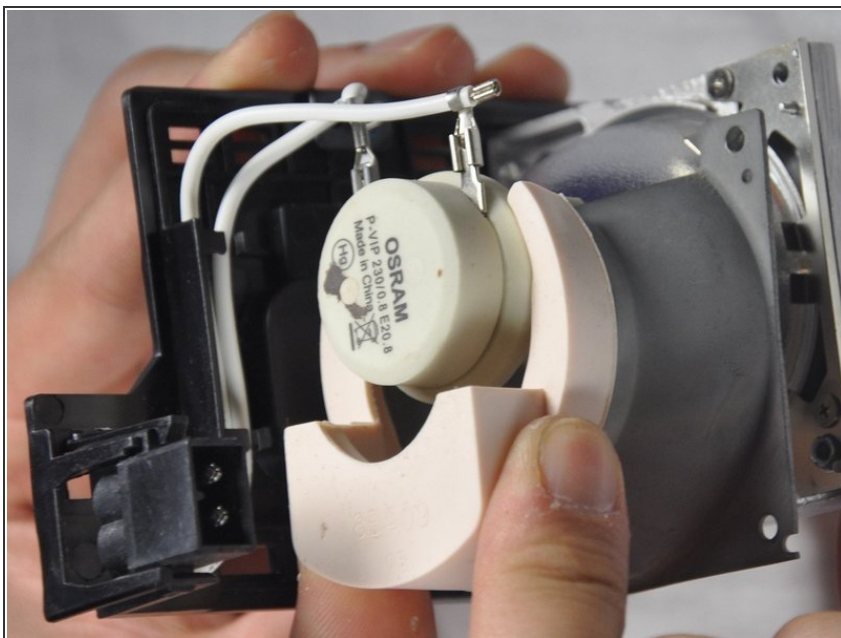


## Step 5 — Light Bulb



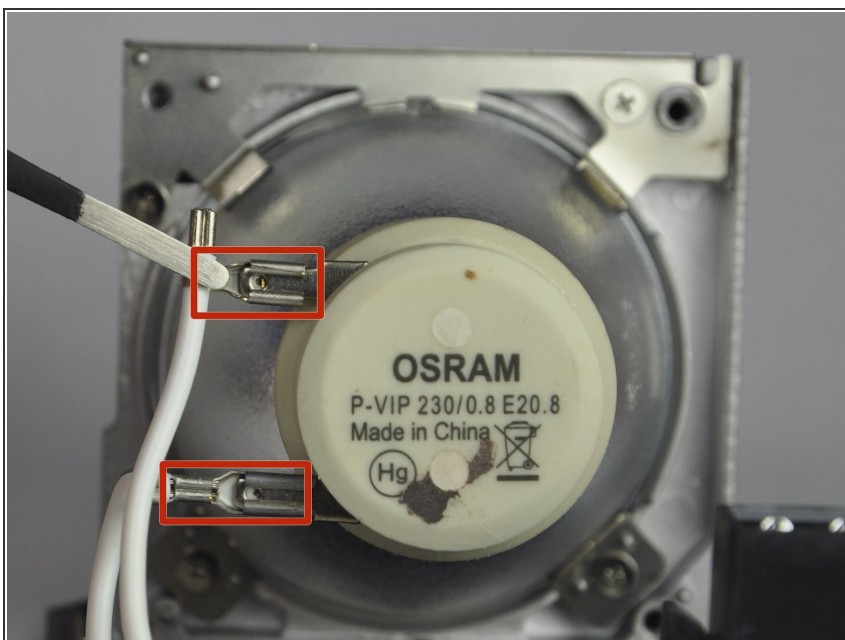
- Remove the three 4.5 mm screws on the light bulb case.

## Step 6



- Carefully remove the light bulb insulator from the light bulb casing.

## Step 7



- Gently pull the wires off of the pins using tweezers.

## Step 8



- Remove the 4 screws on the back of the light bulb casing using a Phillips #1 screwdriver.

## Step 9



- Remove the casing, then gently pull out the old light bulb and replace it with the new one.

To reassemble your device, follow these instructions in reverse order.