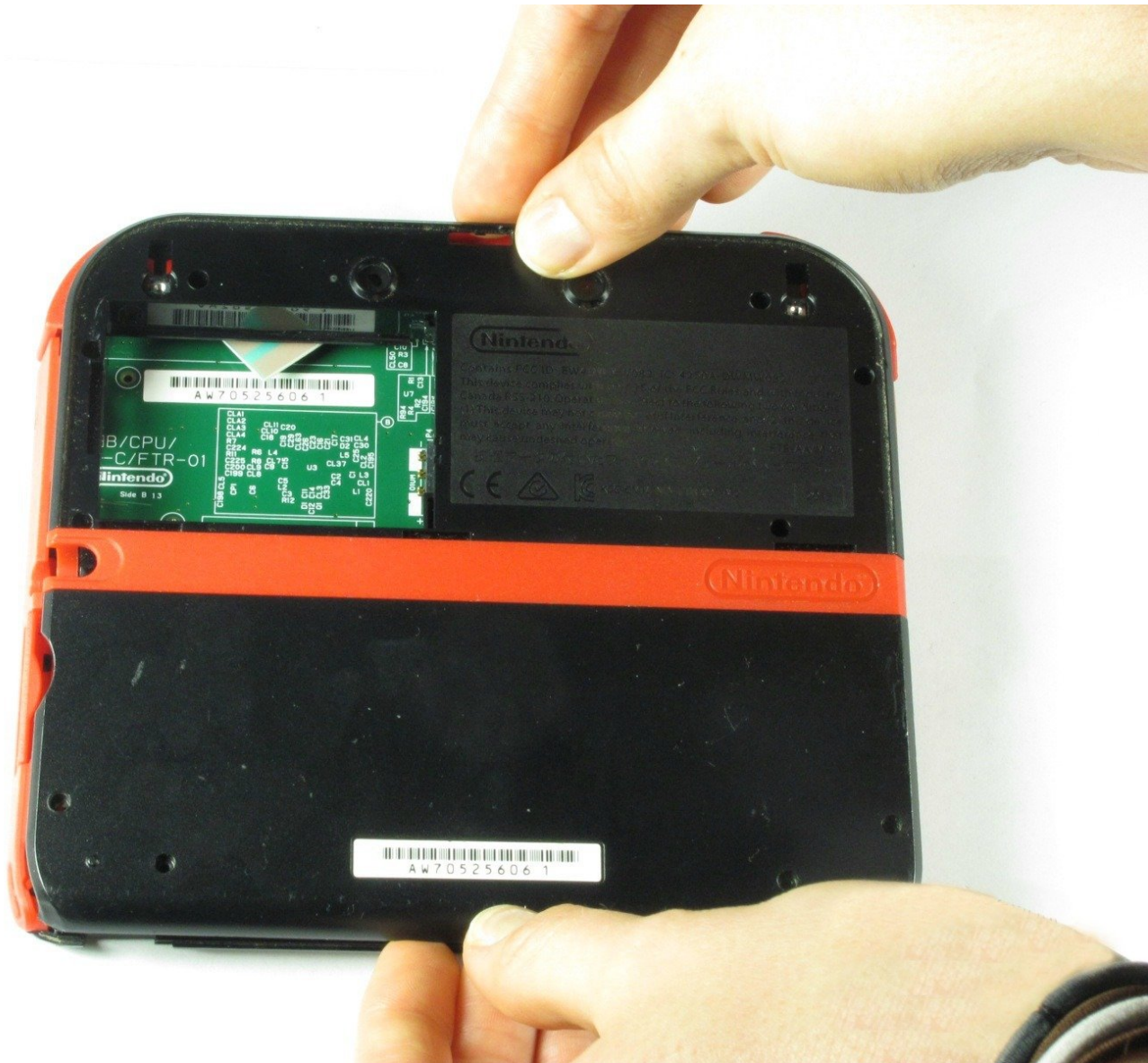




# Nintendo 2DS Rear Panel Replacement

This is a guide for the removal of the back...

Written By: Fina Beauchamp



---

## INTRODUCTION

This is a guide for the removal of the back panel of the Nintendo 2DS. This guide will illustrate how to remove the screws attaching the back panel in order to access other parts of the Nintendo 2DS.

---

### TOOLS:

- [Phillips #00 Screwdriver](#) (1)
-

## Step 1 — Rear Panel



- Remove the ten Phillips screws attaching the rear panel.

## Step 2



- ⓘ The rear panel is attached to the motherboard by a ribbon cable, so be careful not to lift the rear panel too far from the device.
- Carefully pull the rear panel straight up from the device.

## Step 3



- Use your fingernail or the flat end of a spudger to flip up the connector securing the ribbon cable to the motherboard
- Remove the cable from the connector
- ⓘ Take the opportunity to remove the Left and Right triggers, they have hinges that may break and springs that may jump away.

To reassemble your device, follow these instructions in reverse order.