

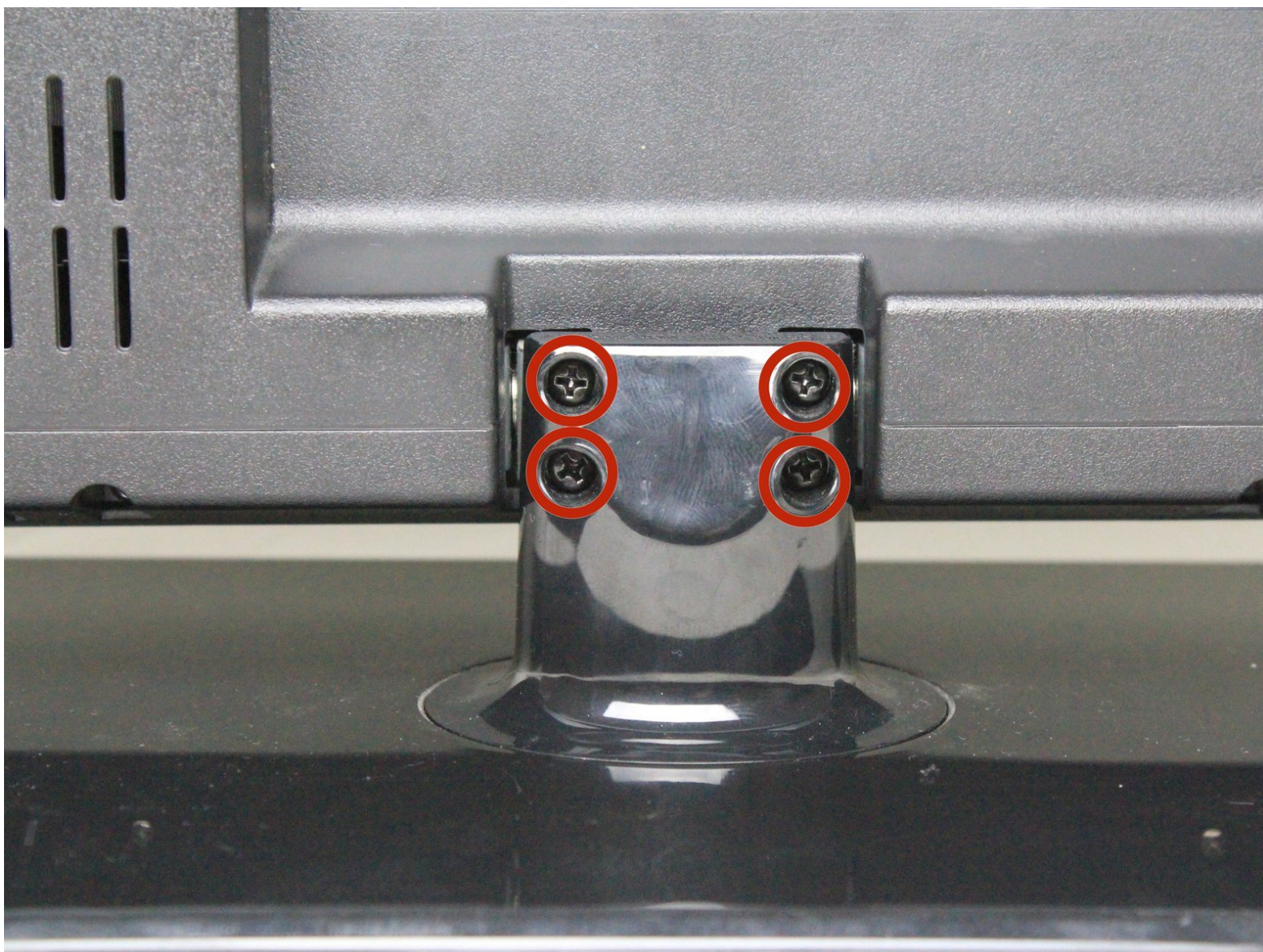


Disassembling RCA 22" DECK215R HDTV

Stand and Back Panel

To repair or replace most parts on the RCA DECK215R HDTV, the stand and back panel need to be removed first.

Written By: Patrick Soper



INTRODUCTION

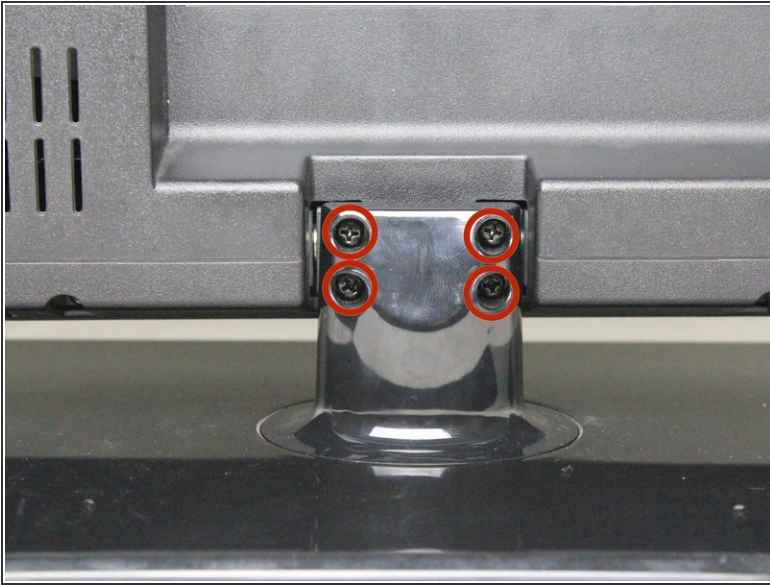
The stand and back panel removal are the first steps to fixing anything in your TV.



TOOLS:

- [Phillips #2 Screwdriver](#) (1)
 - [Phillips #0 Screwdriver](#) (1)
-

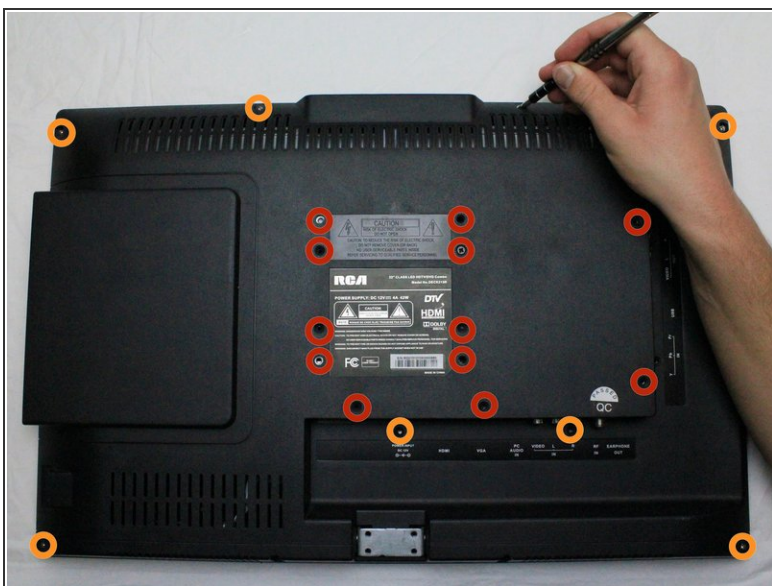
Step 1 — Removing the Stand



⚠ Before disassembling your television, ensure that all cables are unplugged from their power source to avoid serious injury or death from electrocution.

- Lay the TV flat with the screen facing down.
- Remove the four, 12mm Phillips #2 screws from the back of the TV stand. Support the TV from underneath as you remove the screws, so the bottom does not fall on the table.
- Remove the stand by lifting it away from the TV's backing.

Step 2 — Removing the Back Panel



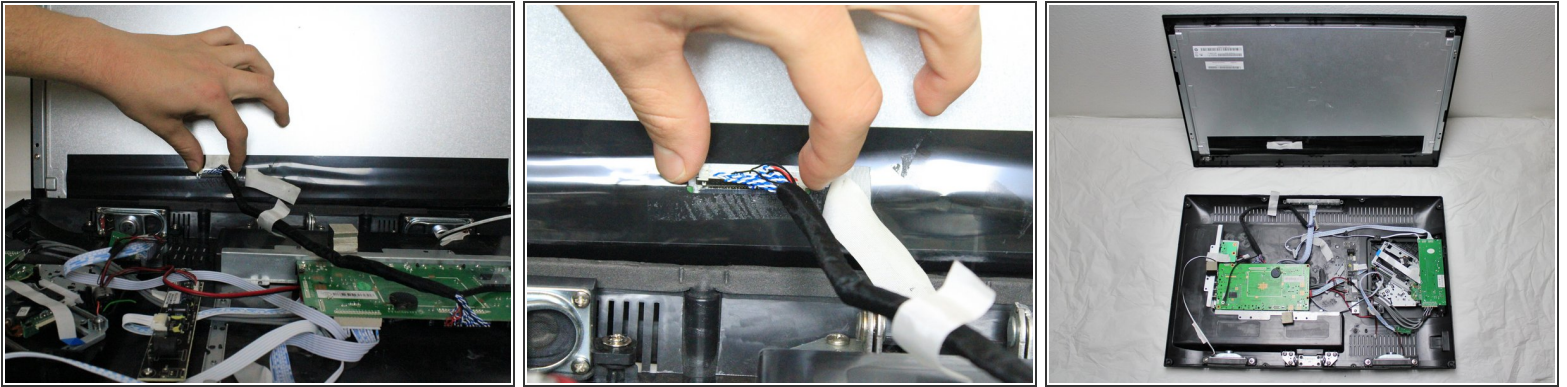
- Remove the twelve, 6mm Phillips #2 screws from the middle of the TV's rear casing.
- Remove the seven, 9mm Phillips #2 screws from the outer edge of the TV's rear casing.
- While holding the screen down, pull the back panel up slowly, ensuring that you do not forcibly disconnect the remaining ribbon cable.

Step 3 — Locate Pin



- Position the television to where the back panel is resting on the table and the screen is vertical.
- Peel the tape covering the ribbon cable horizontally.

Step 4



- Pinch the clamps on both sides of the ribbon cable casing to detach it from the screen panel.
- Remove the screen to isolate the back panel.

To reassemble your device, follow these instructions in reverse order.