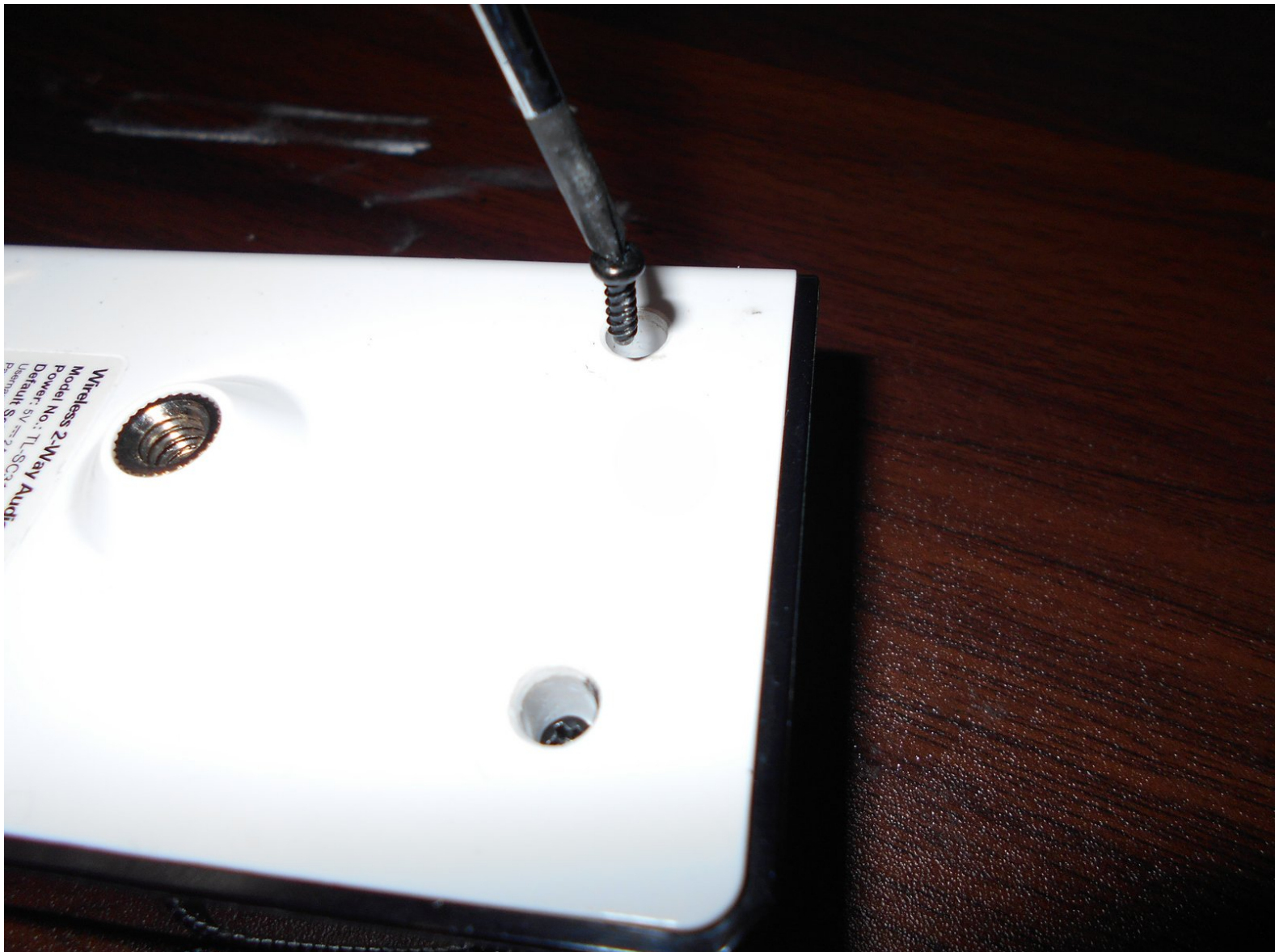




# TP-LINK 2-Way Audio Wireless Surveillance Camera Wireless Card/Shield Teardown

TP-LINK 2-Way Audio Wireless Surveillance Camera Wireless Card/Shield teardown.

Written By: Marios



---

## INTRODUCTION

Hey im Marios!! Make repairs on everythink you may have in your house!This is an easy repair but some people may want some help!Lets go!



### TOOLS:

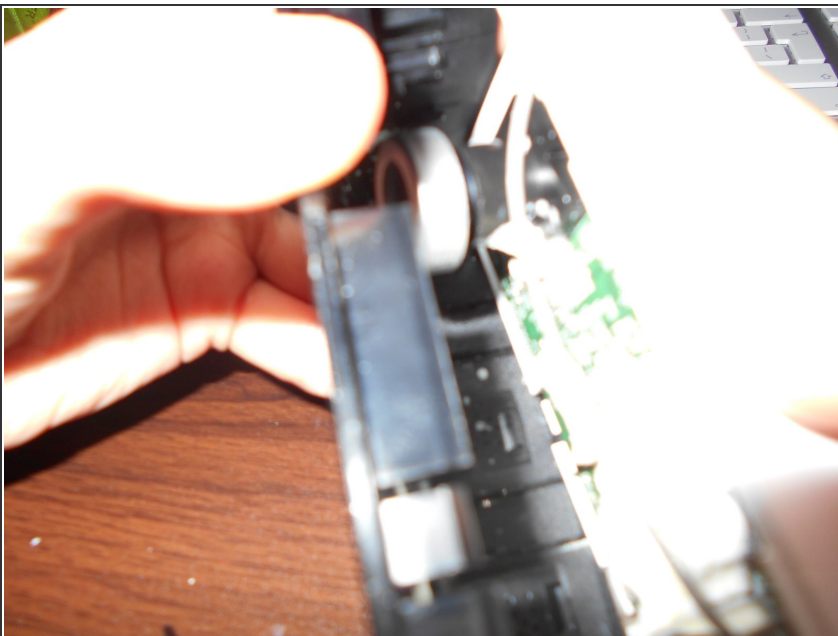
- [Pro Tech Toolkit](#) (1)
-

## Step 1 — Remove the screws



- Remove the 2 screws holding the back cover! Should be fairly easy (You need a Phillips Screwdriver)

## Step 2 — Remove the Back Panel



- This is also fairly easy to do! You can use your hands to pull it off! Put first use a flat screwdriver to open the "clips"

### Step 3 — Remove the Board!



- Remove the board from the Surveillance Camera!

### Step 4 — Remove the Wireless Card!



- Remove the wireless card which is hold by 2 "clips"!



## Step 5 — Disconnect the Antenna Cable!



- Remove the cable antenna now! And that's it if you are done, now just follow the guide in reverse and install your new wireless card/antenna if also needed!
- ***WARNING: DO THIS CAREFULLY! IT'S SUGGESTED THAT YOU DO THIS STEP SLOWLY! TAKE YOUR TIME OR YOU MAY DAMAGE THE CABLE OR EVEN THE BOARD!***