



# Timex TX5020 LCD Electronic Thermometer

## Teardown

This guide will tear down the Timex TX5020 LCD Electronic Thermometer to its main components.

Written By: Chris L



## INTRODUCTION

The Timex TX5020 is an electronic thermometer that can be used both indoors and outdoors. It requires only a screwdriver to take apart.



### TOOLS:

- [Phillips #1 Screwdriver](#) (1)



### PARTS:

- [Timex TX5020](#) (1)

## Step 1 — Timex TX5020 LCD Electronic Thermometer Teardown



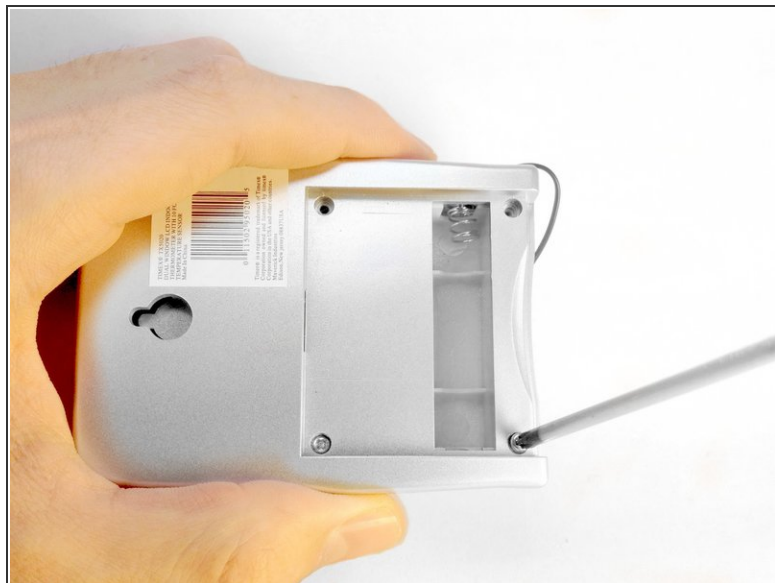
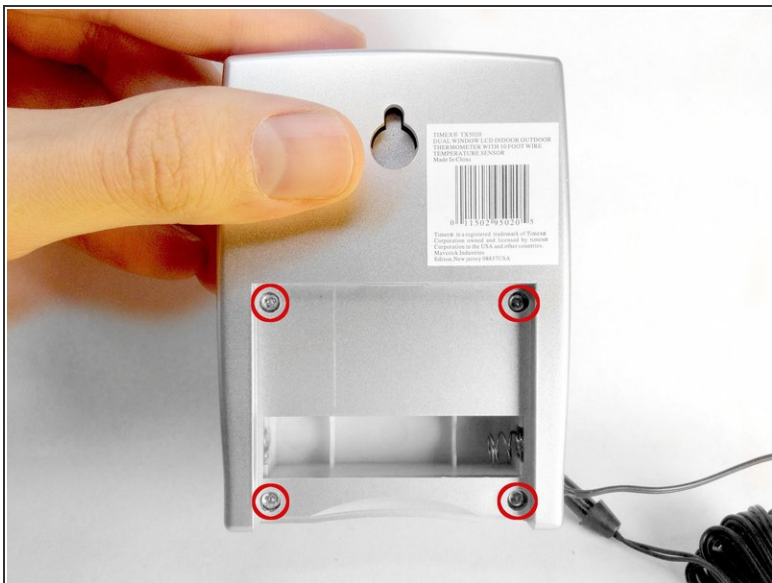
- Here is the fully assembled thermometer.

## Step 2



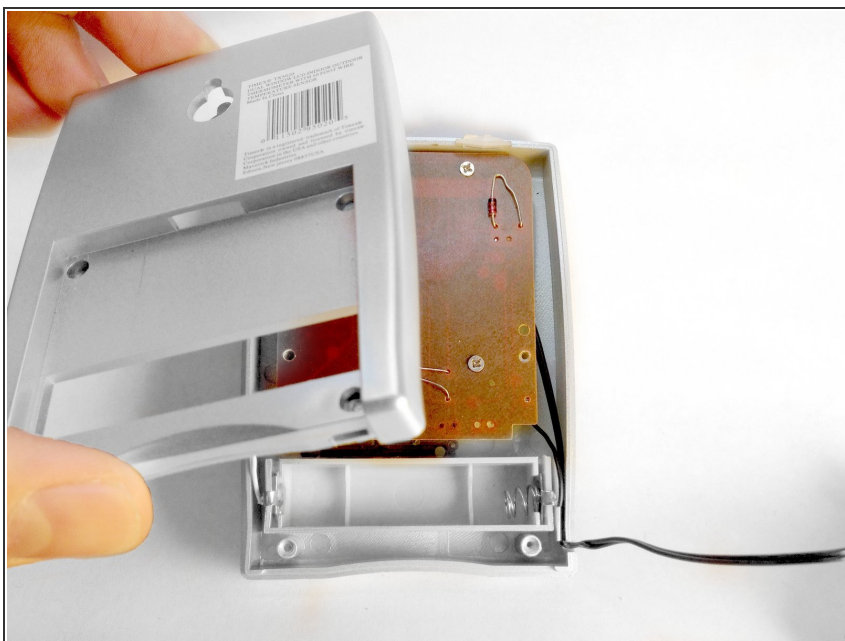
- Slide the battery compartment cover off by applying downward and forward pressure.

## Step 3



- Loosen and remove the four screws from the back of the thermometer.

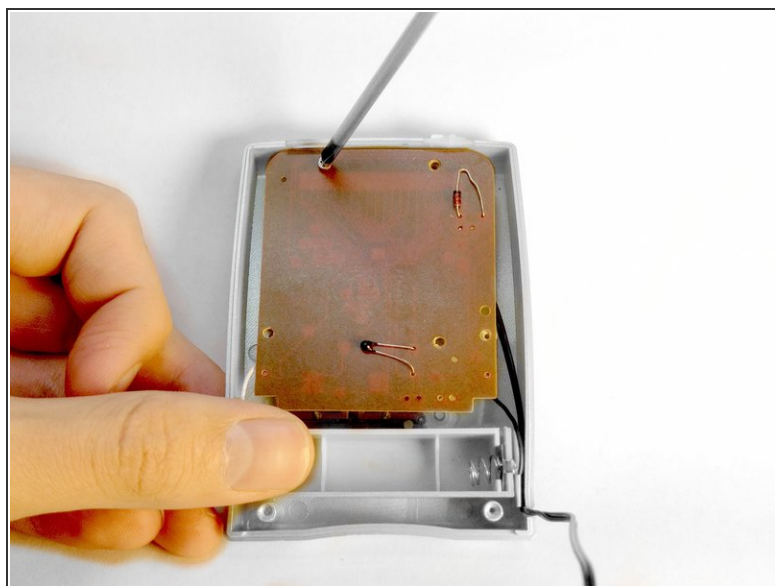
## Step 4



- Lift the back panel away from the rest of the case.

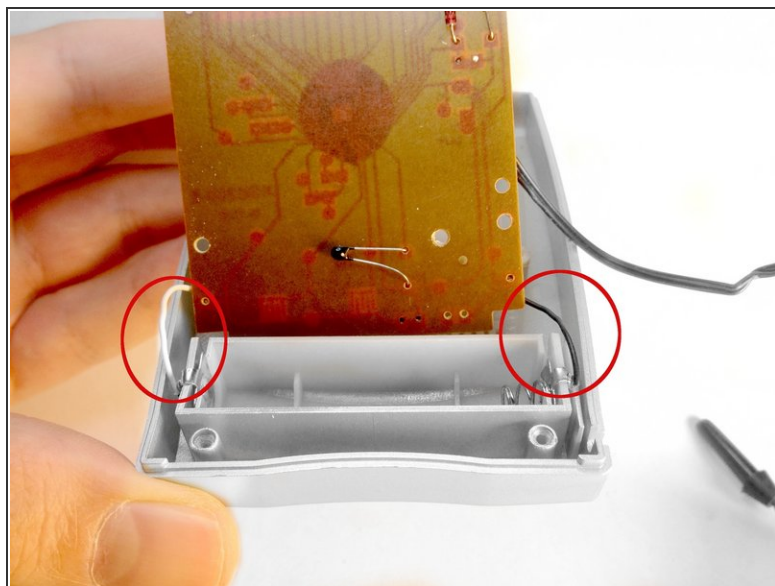
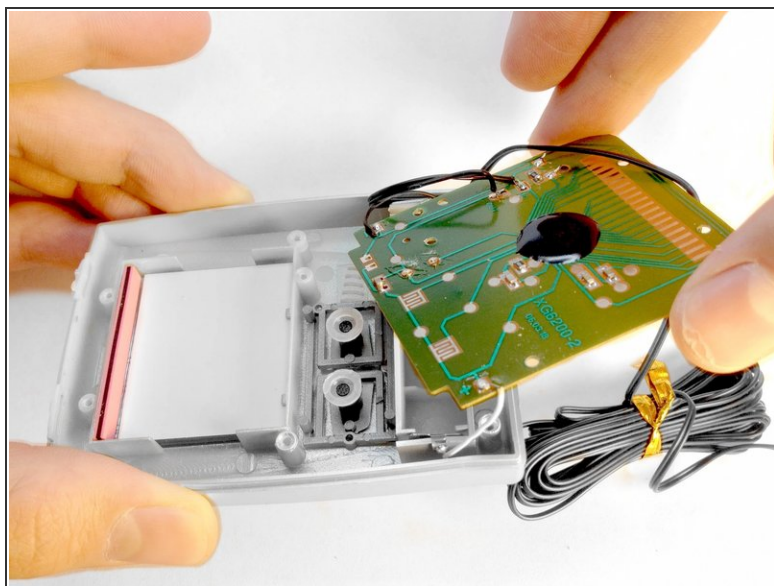


## Step 5



- Remove the three screws holding the circuit board in place.

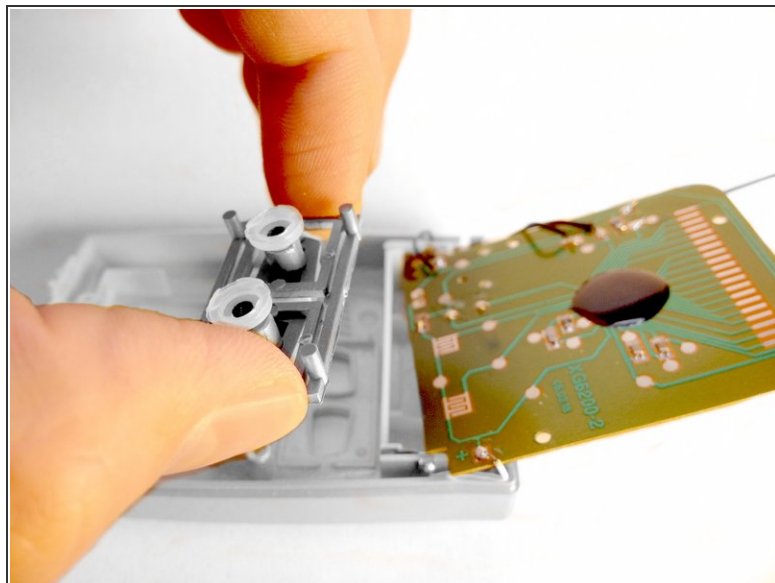
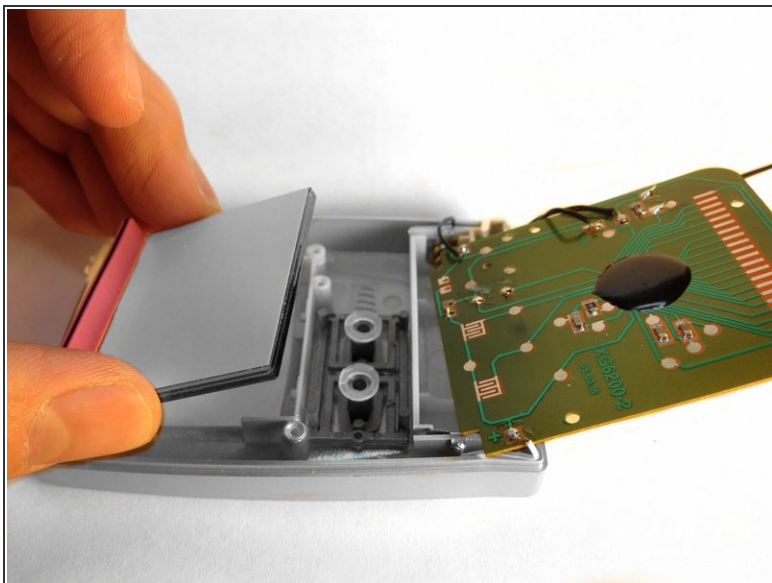
## Step 6



- Lift the circuit board away from the case.

⚠ Be careful not to pull too hard as the board is attached to the battery contacts.

## Step 7



- Remove the screen from its compartment.
- Remove the push buttons from their compartment.

## Step 8



- Here's a full view of the disassembled components (circuit board, screen, push buttons, and case).

To reassemble your device, follow these instructions in reverse order.