



# Toshiba Satellite 2435-S255 Heat Sink Replacement

This guide will show you how to replace the heat sink, useful for cleaning it out or solving a heating issue.

Written By: Jonathan Lancey



---

## INTRODUCTION

Remove the Battery. Whenever tinkering with electronics, always turn them off and remove all sources of power if possible; otherwise you could hurt yourself or damage your machine irreparably.

---



### TOOLS:

- [T6 Torx Screwdriver](#) (1)
  - [Phillips #00 Screwdriver](#) (1)
  - [Tweezers](#) (1)
-



## Step 1 — Removing the Latch



- i** The latch on this is tricky. Fortunately, it's the only thing you have to deal with.
- First, slide the latch until you hit resistance. At this point, you have two options.
  - You can either keep pushing the latch until the battery pops out. . .
  - or you can start prying the battery out while pushing the latch (as shown in the second picture above).

## Step 2 — Remove the Battery



- Just lift the battery up and out, making sure to lift from the end near the latch.
- Now the battery is out! To put it back, just insert it back in from the same angle you took it out on.

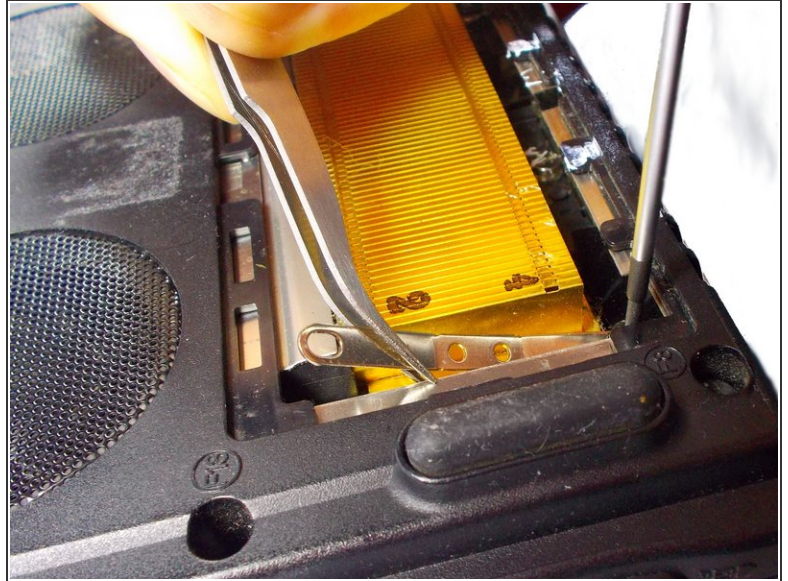
## Step 3 — Unscrew and Remove the Cover



- Using a T6 screwdriver, unscrew the two indicated 4mm screws to remove the panel.
- After that, simply lift and pull out the cover panel.



## Step 4 — Remove the Heat Sink Brackets



- This step can be kind of tricky. Using a PH00 screwdriver, remove the eight indicated screws. The screws in the four corners are 5mm while the four screws on the left and right sides are 3mm.
- ⓘ It doesn't matter which order you unscrew them when removing the heat sink.
- If you're removing one of the top or bottom (red) ones for that side last, make sure to use a pair of tweezers to hold the other end so that the bracket doesn't drop into the laptop.

## Step 5 — Pull Out the Heat Sink



- To remove the heat sink, pull it away from the fan and up.
- ⓘ You'll probably need to wiggle it around a bit, but it should come out easily.
- ⚠ Be careful, however; there will be thermal paste in the middle of the bottom, where it connected to the CPU. If you're putting in a new heat sink, I recommend cleaning off the CPU and applying a new layer of thermal paste.
- Done! The heat sink is out. Check the conclusion for a little information on putting it back in.

When re-installing the heat sink, start with one of the top/bottom screws for the bracket, then do the middle two, and then the last top/bottom one. For the last screw, push down on that end of the bracket so the screwholes line up. Otherwise, follow these instructions in reverse order.