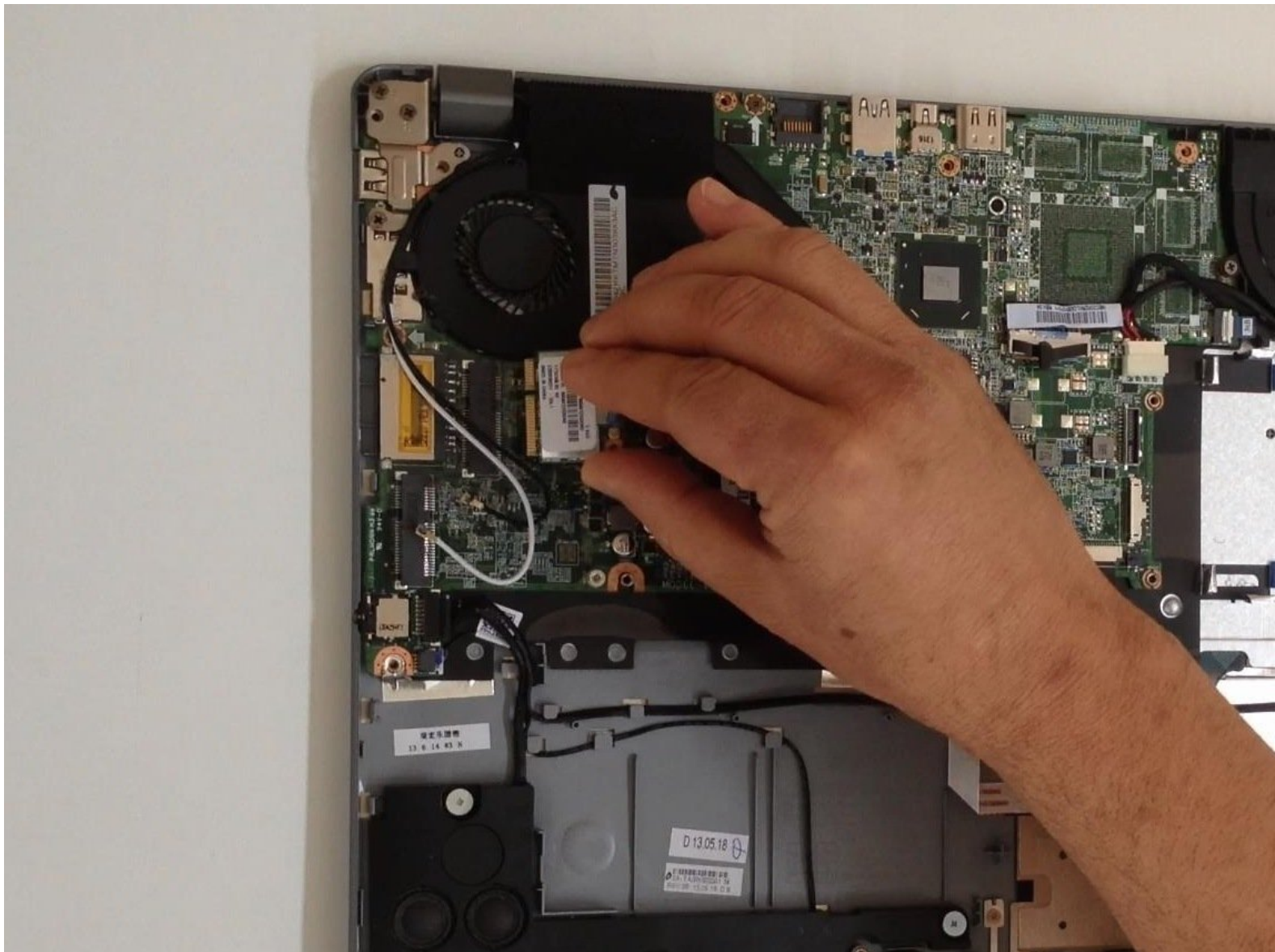




Acer Aspire V5-572, V5-572G Wi-Fi half mini PCIe card Replacement

Acer Aspire V5-572, V5-572G Wi-Fi half mini PCIe card Replacement

Written By: ZFix



INTRODUCTION

Acer Aspire - V5-572, V5-572G

How to disassemble the Laptop and replace the Wi-Fi Card.

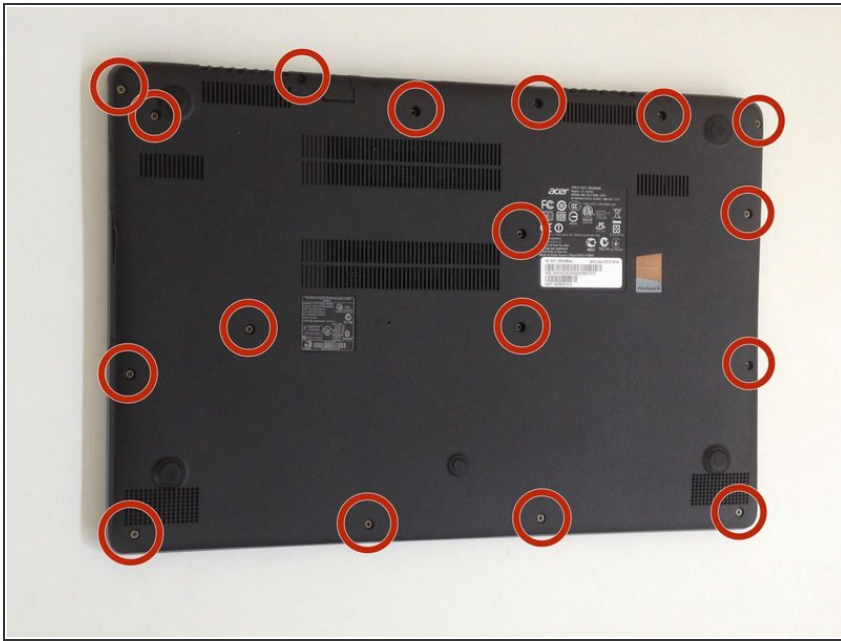
[video: <http://youtu.be/Sg8tUXZL864>]



TOOLS:

- [Phillips #0 Screwdriver](#) (1)
 - [iFixit Opening Tools](#) (1)
 - [iFixit Opening Picks set of 6](#) (1)
-

Step 1 — Bottom Cover



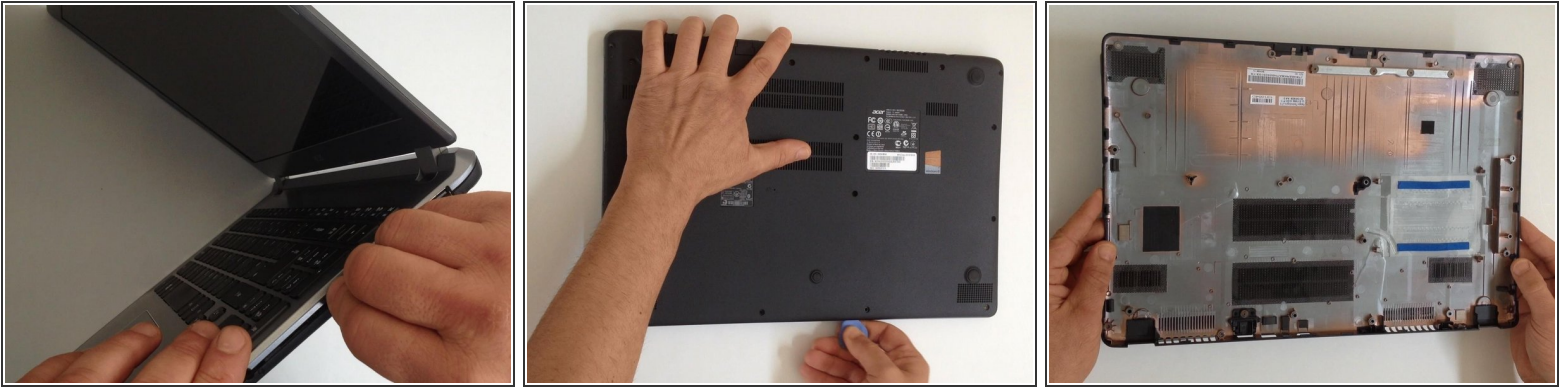
- ❗ Switch-off the Laptop.
- Remove the seventeen Philips #0 screws.

Step 2




- If there is a plastic storage tray in the laptop, remove it.

Step 3

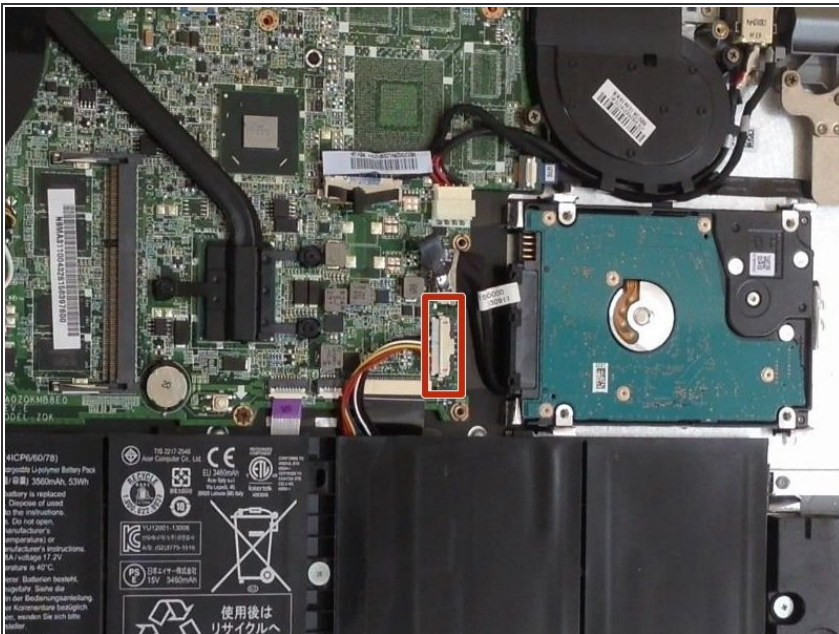



- Starting from the SD Memory Card hole, start prying between the top and bottom cases.

 Use plastic tools to avoid damaging the cover.

- Remove the bottom case.

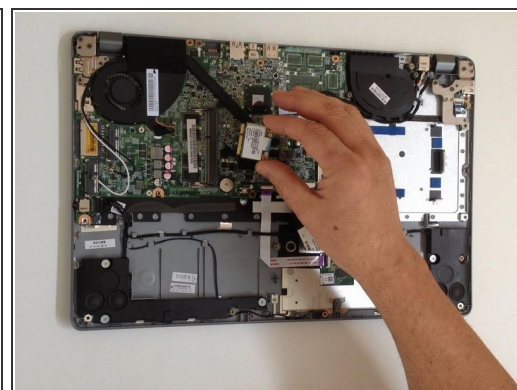
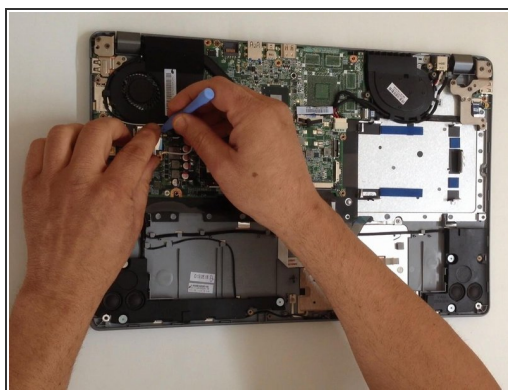
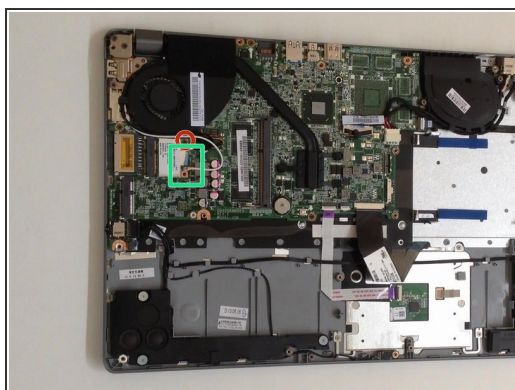
Step 4



 Disconnect the battery immediately for a safer repair.

- Pull the battery connector away from the hard drive to disconnect it.

Step 5 — Wi-Fi half mini PCIe card



- Remove 1x screw and disconnect the two antenna coaxial cables.
- Remove the Wi-Fi card from the slot.

To reassemble your device, follow these instructions in reverse order.