



CH-6CF 2-Speed Clip-On 6-Inch Fan Teardown

Easy to assemble with 2-speed slide switch and plastic grill. Clip-on anywhere desired.

Written By: Justin



INTRODUCTION

Make sure this device is unplugged before doing any work on it. Never expose the fan blades when operating the fan, as the speed the motor runs on can cause serious injury.


TOOLS:

- [Small Phillips Head Screwdriver](#) (1)
 - [Smart Wrench](#) (1)
-

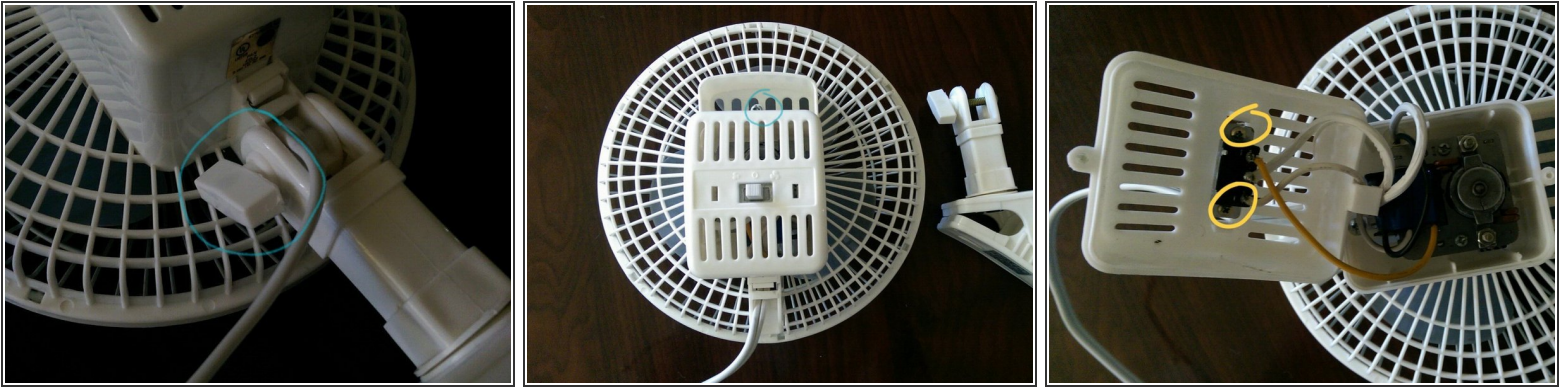
Step 1 — Safety and Supplies



- Gather the required tools: a small Phillips head screwdriver and a smart wrench.

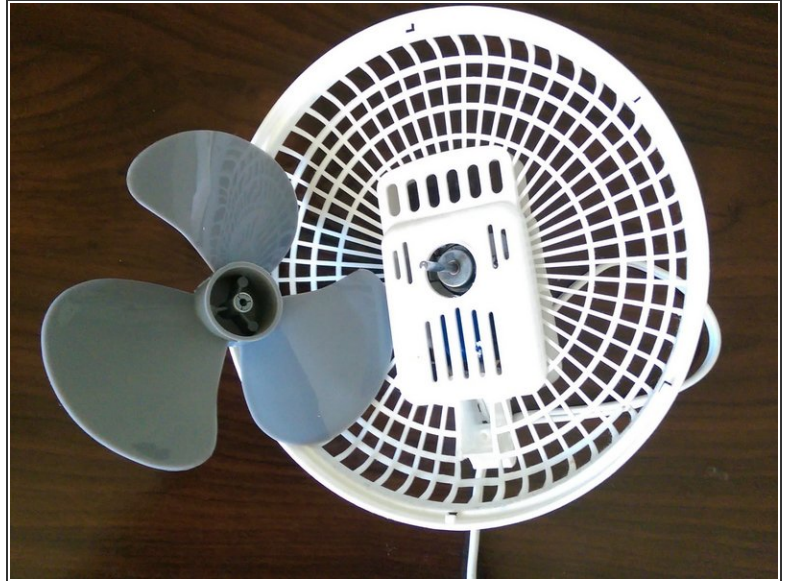
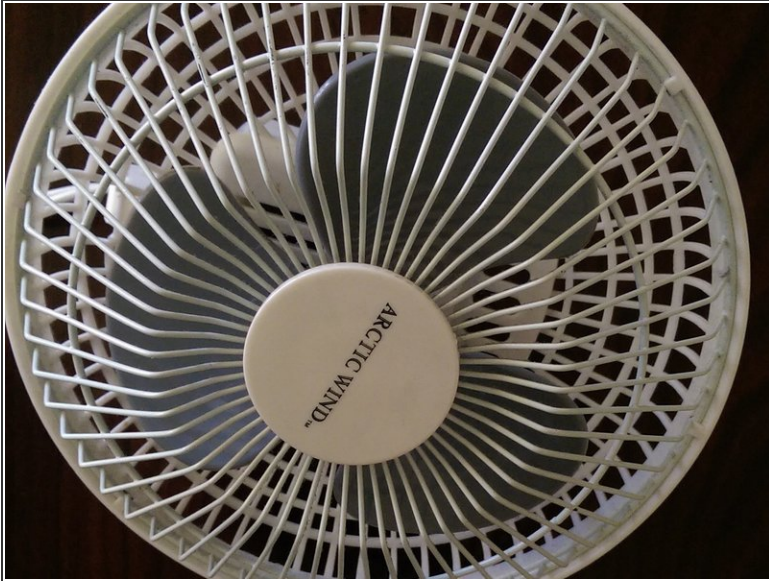
 Make sure the device is unplugged and fan blade is not spinning before starting.

Step 2 — Opening the Shell



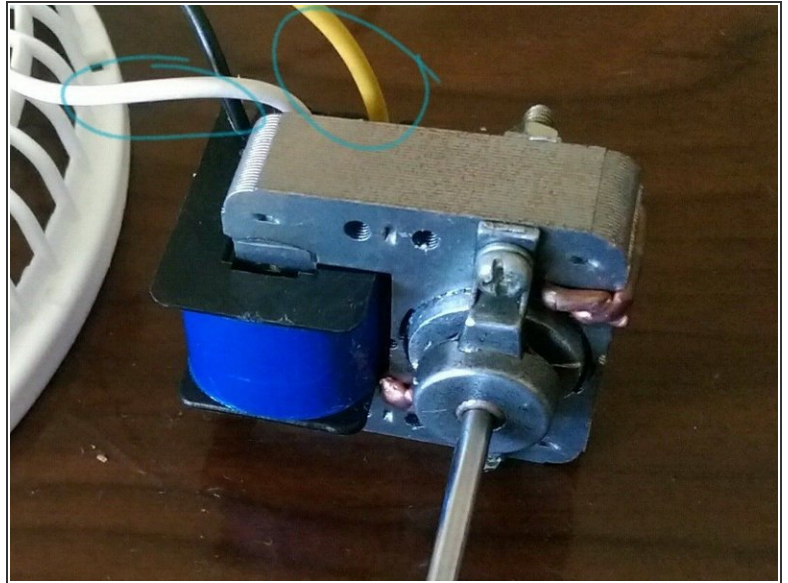
- Unscrew the clip-on stand that connects the fan. This can be done by hand.
- Turn the fan so that the back is facing up and remove the screw on the upper part of the housing.
- Remove the back casing to reveal the switch's screws on the inner part of the casing. Remove those as well.
- The switch's settings:
 - Off (center)
 - Speed 1 (left)
 - Speed 2 (right)

Step 3 — Removing the Fan Blade



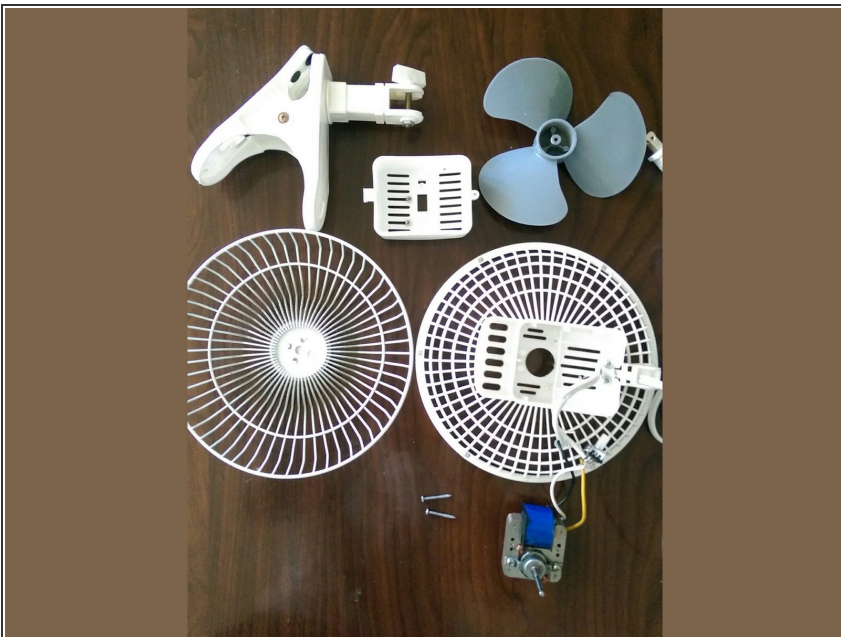
- Turn the fan around so that the front is facing upwards. Remove the front grill by carefully popping out the edges from the plastic tabs around the enclosure.
- Remove the fan blade by carefully forcing it off the motor shaft. It may help to use the wrench as a lever and slowly push it out.

Step 4 — Looking at the Motor



- Now that the blade is removed. The motor can now be removed from the other half of the housing.
- Remove the two screws indicated in order to take the module out of the plastic.
- The motor is connected to the blue transformer. The yellow and white wires indicate the two power outputs for the speed of the motor's rotation.

Step 5



- That's it! There isn't too much when taking this device apart.
- ① **Note:** You can further expand on the teardown by taking apart the transformer to DC motor set-up, but it's such a simple circuit that it isn't necessary to look at it.

To reassemble your device, follow these instructions in reverse order.