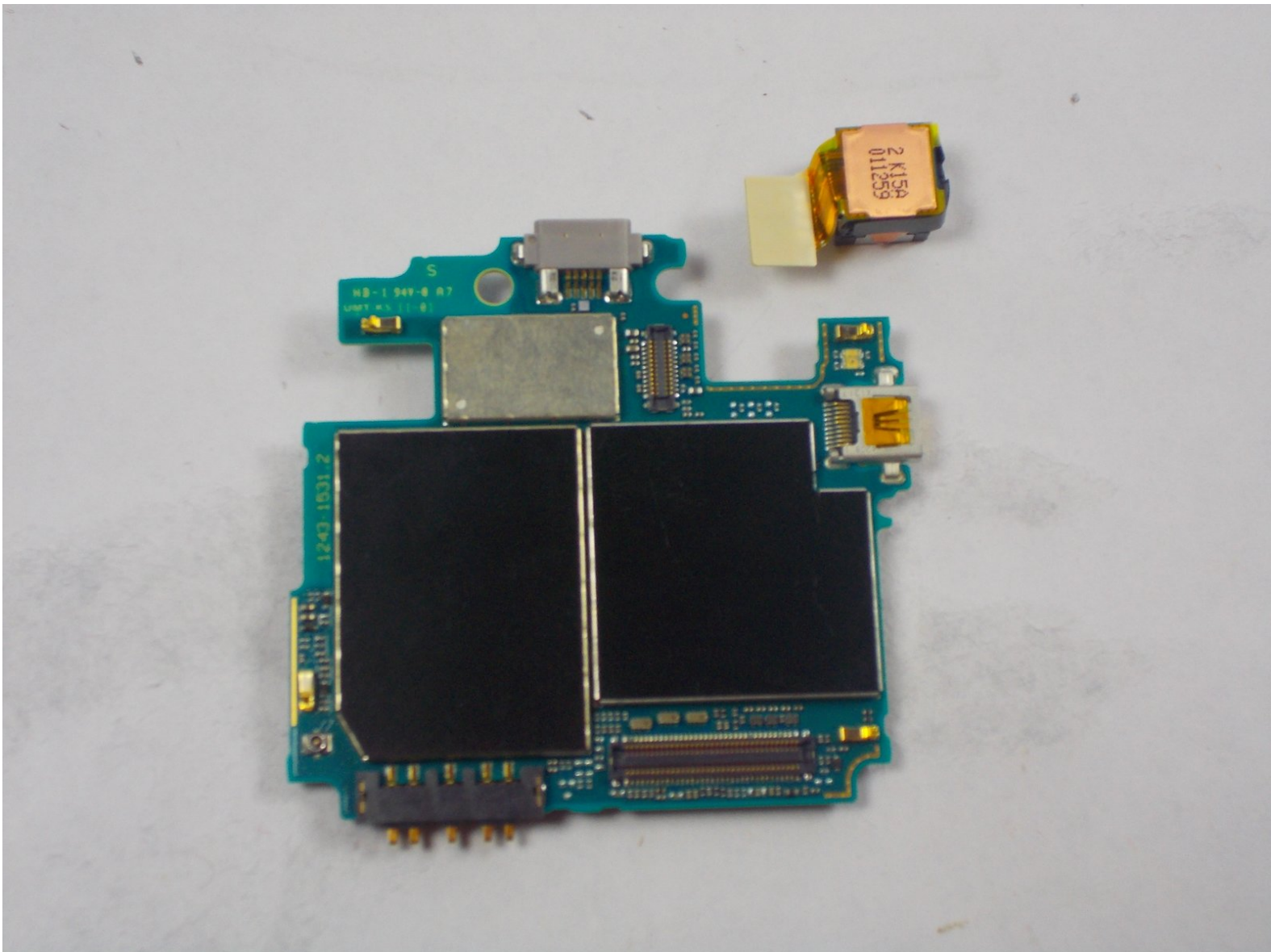




# Sony Ericsson Xperia Pro MK16A Camera Replacement

Is your phone's camera not taking photos or videos properly? Use this guide to replace your camera.

Written By: Sean Gallagher



---

## INTRODUCTION

This guide will help you replace the camera in your Sony Ericsson Xperia Pro MK16A phone. Follow along to install a new camera in about half an hour.

---



### TOOLS:

- [iFixit Opening Tools](#) (1)
  - [T6 Torx Screwdriver](#) (1)
  - [Phillips #0 Screwdriver](#) (1)
-

## Step 1 — Taking the Back Off



- Use a plastic opening tool to get the back cover off your phone.
- ☑ The plastic opener will work on any side, but be careful and pry gently.

## Step 2 — Removing the Battery



- Locate the battery in your phone.
- Find the divot below the battery.
- Use your thumb to lift the battery out of the phone.

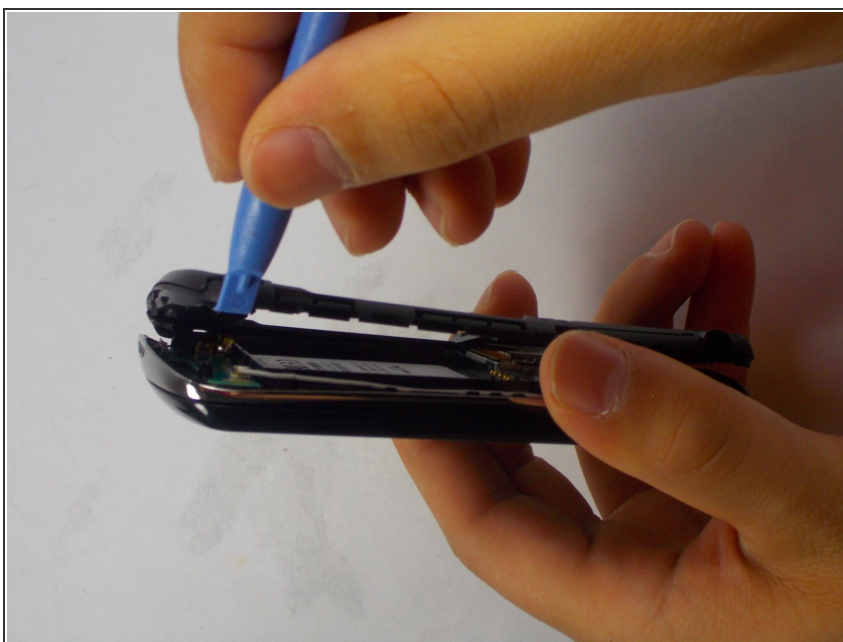


### Step 3 — Remove Screws



- Remove the 4 black screws with the Phillips screwdriver.
- Remove the 4 silver screws with the Torx screwdriver.

### Step 4 — Remove Back Case



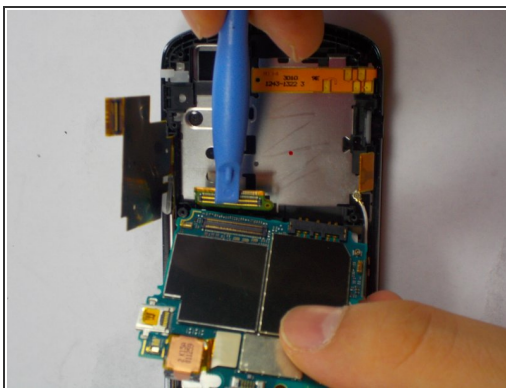
- Insert the plastic opening tool in between the two halves of the case. Pry around the phone to detach the back case.

## Step 5 — Access the Logic Board



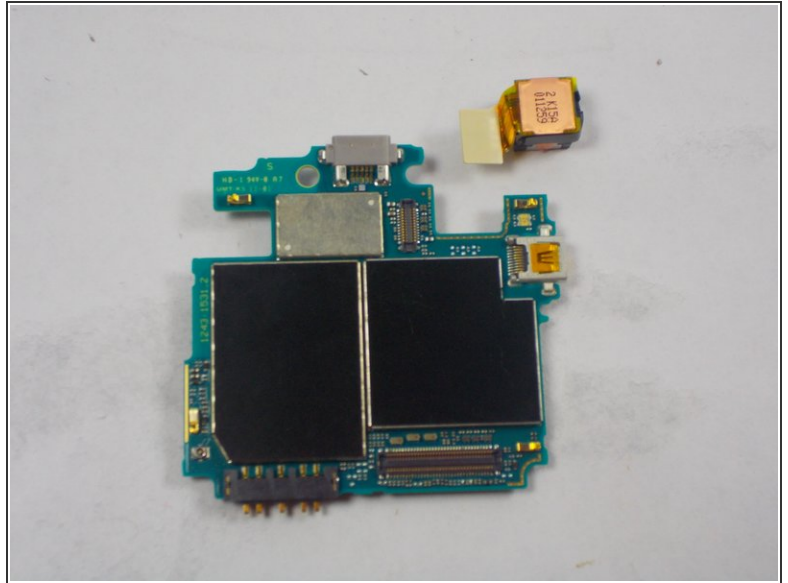
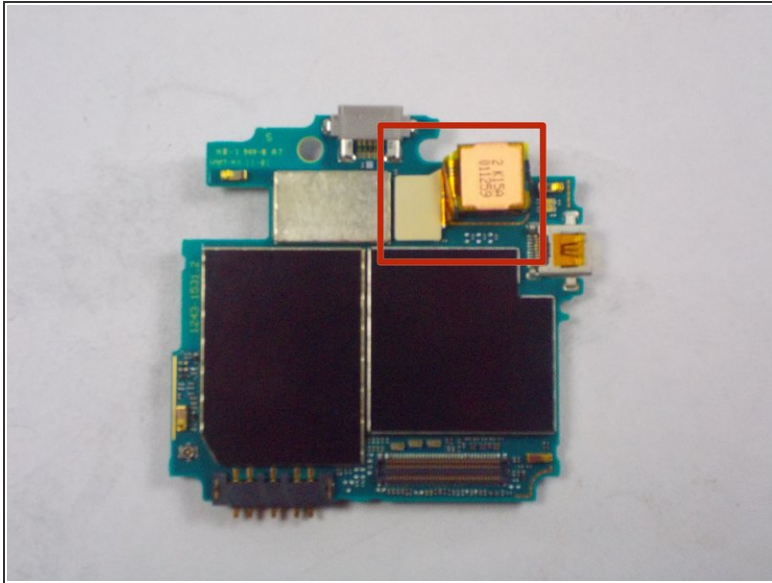
- Remove the last screw that is connecting the logic board using the Phillips screwdriver.
- Undo the two ribbons.

## Step 6 — Remove the Logic Board



- Undo that last connector.

## Step 7 — Remove Camera



- Lift the camera off of its connector on the logic board.

To reassemble your device, follow these instructions in reverse order.