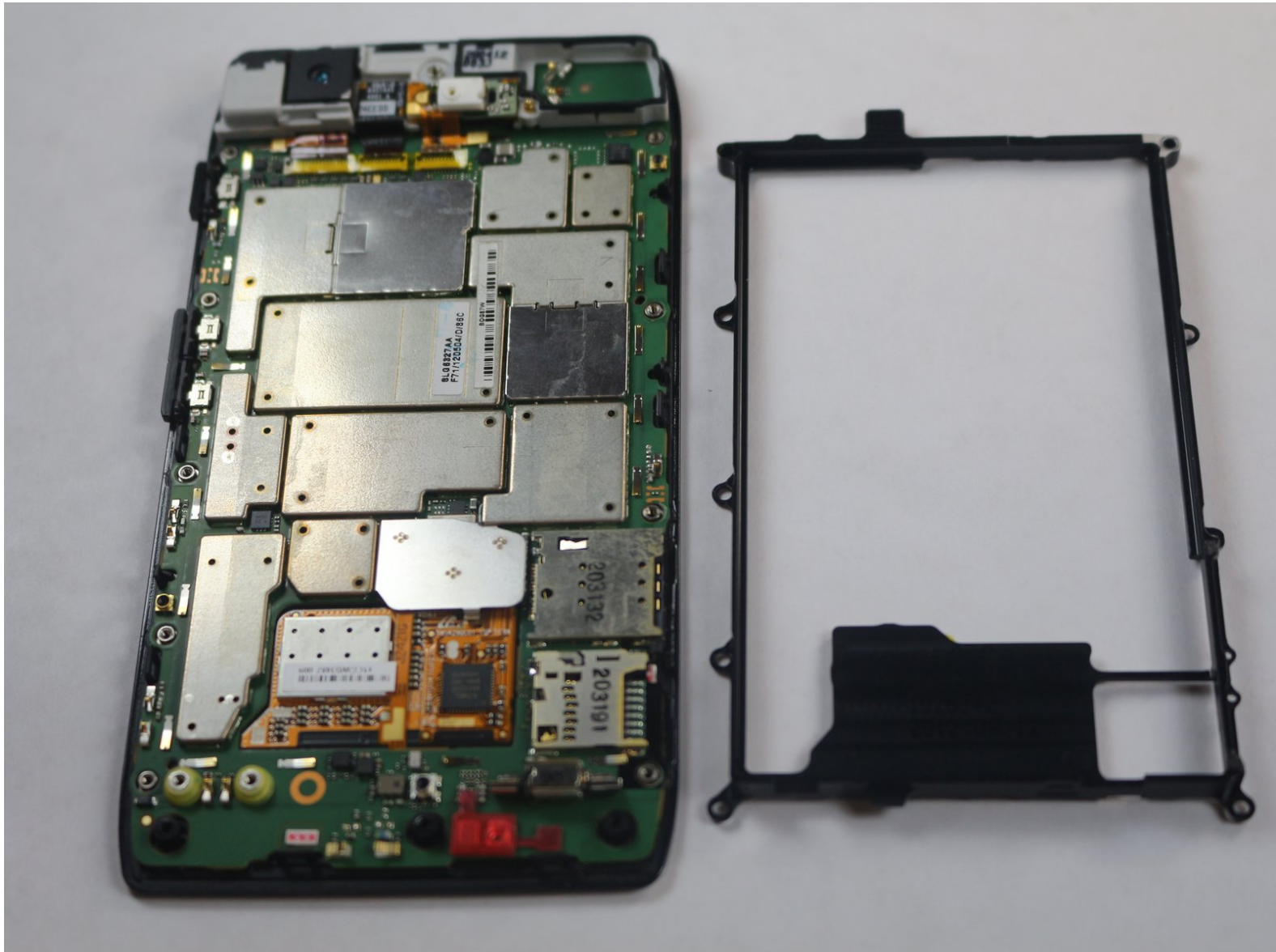




Motorola Droid RAZR Maxx Metal Chassis Replacement

Droid RAZR Maxx metal chassis removal.

Written By: Nick Kraese



INTRODUCTION

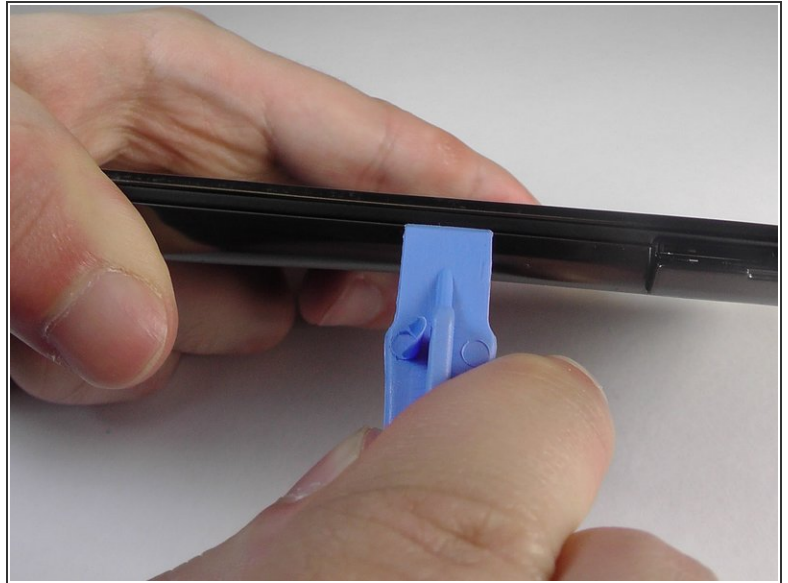
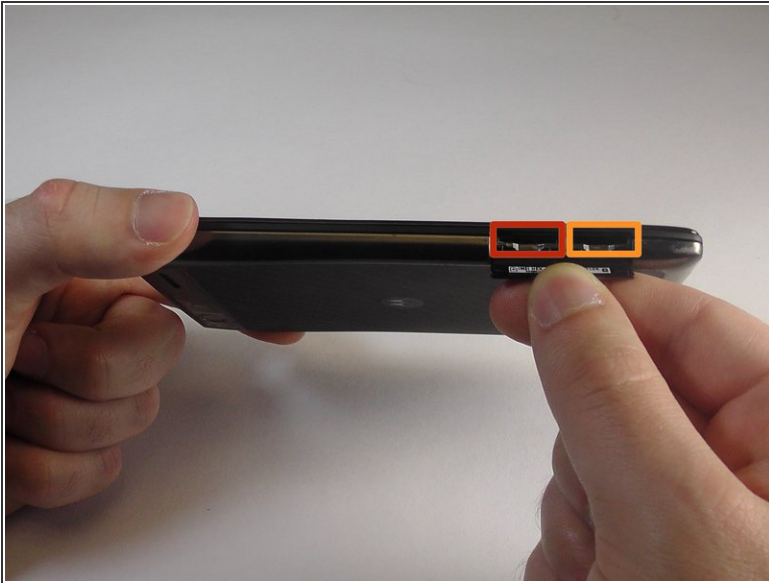
To reach all the important parts of the phone such as the motherboard and the LCD screen you must remove this metal contraption.



TOOLS:

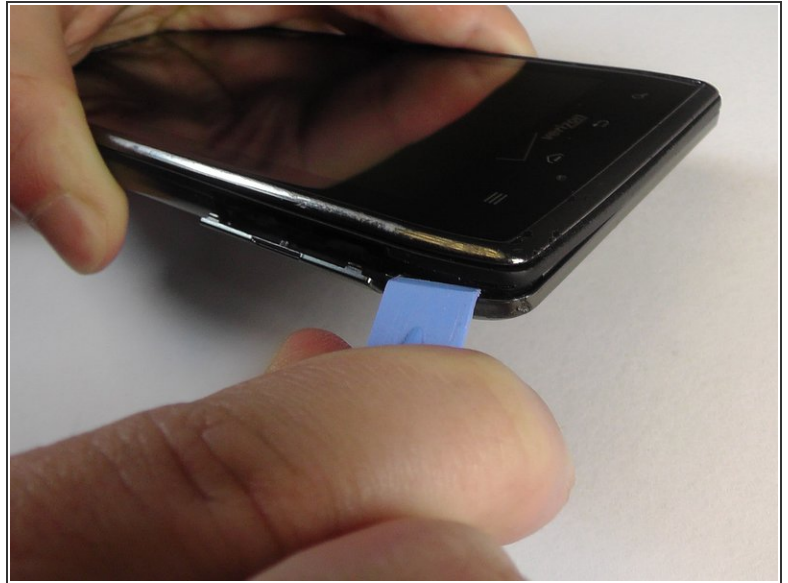
- [Spudger](#) (1)
 - [iFixit Opening Tools](#) (1)
 - [64 Bit Driver Kit](#) (1)
-

Step 1 — Metal Chassis



- Remove the SIM card.
- Remove the microSD card.
- Insert the plastic opening tool between the back cover and the front piece of the case, freeing the plastic clips between the phone.
- Do this along the back right side of the phone cover until you reach the top.

Step 2



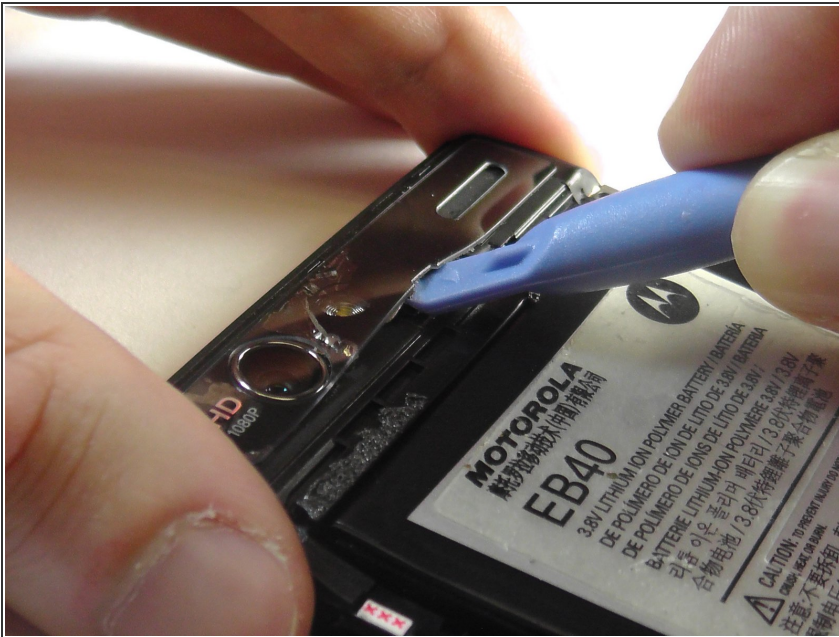
- Use the plastic opening tool to carefully work your way around the top of the phone, freeing the plastic clips.
- ⚠ Be cautious when using the tool around the top of the device because the plastic case is very thin and could easily be cracked or snapped.
- After this continue using the tool and pry down the remaining side and the bottom of the phone.

Step 3



- With all the plastic clips released, pull away the back cover from the phone to remove it.
- ⓘ The back cover is attached to the battery with a large amount of adhesive. Some force may be required to pull the back cover from the phone.
- ⓘ The back cover is very durable and will not break from some bending or pulling.

Step 4



- Looking at the top rectangular hump where the camera is located, you will now use the plastic opening tool to remove the camera cover.
- With the plastic opening tool, apply pressure into any surrounding crease of the camera cover to remove it.

Step 5



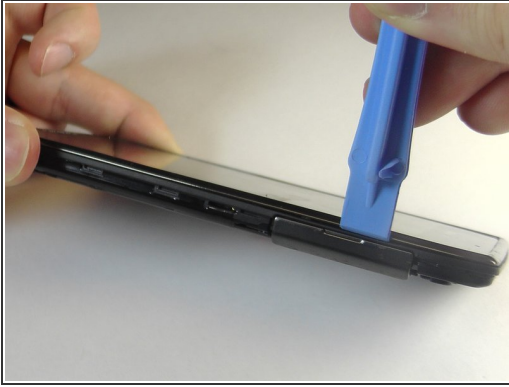
- Using the T5 and T4 bit pieces, remove the silver screws located around the rear case of the phone.
- Remove the three 6.7 mm silver T4 screws that are located at the top of the phone.
- Remove the five 4.0 mm silver T5 screws that are located near the middle of the phone.

Step 6



- Using the T4 bit piece remove the three black 4.5 mm screws that are located at the bottom of the phone.

Step 7



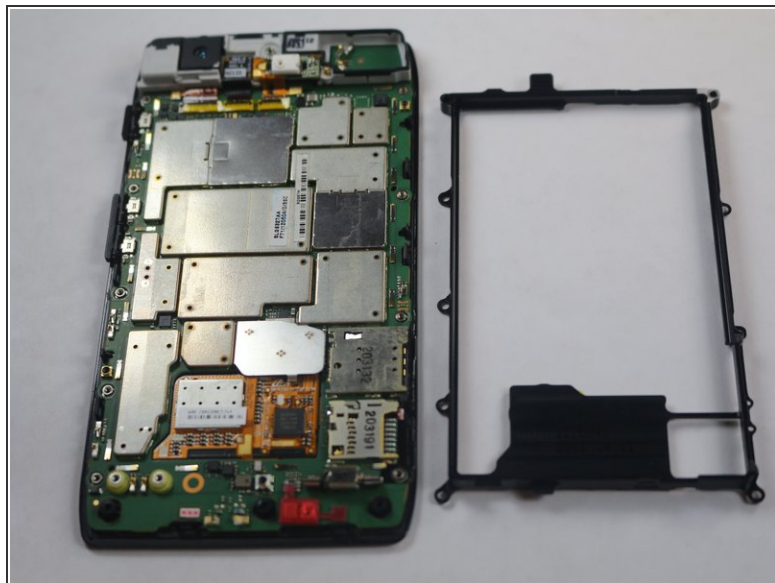
- Insert the plastic opening tool between the rear case and motherboard assembly.
- Using the plastic opening tool, carefully work your way around the phone, freeing the plastic clips.
- Carefully pull the rear case off the motherboard assembly.

Step 8



- Using the tip of the spudger, lift the red silicone cover off the battery terminal screws.
 - Remove the two 3.3mm T5 Torx battery terminal screws.
 - Grab the red battery removal tab and pull the battery out.
- i** There might be some adhesive between the battery and motherboard assembly.

Step 9



- Using the T5 bit pieces, remove the silver screws located around the metal chassis.
- Remove the three 3.5 mm silver T5 screws that are located near the middle of the phone.

To reassemble your device, follow these instructions in reverse order.