



Brother MFC-490CW Front Panel Replacement

If you need to access the internal components...

Written By: Matt



INTRODUCTION

If you need to access the internal components of the Brother MFC-490CW, you will have to remove the front panel of the Brother MFC-490CW. Use this guide to remove the front panel of this device.

TOOLS:

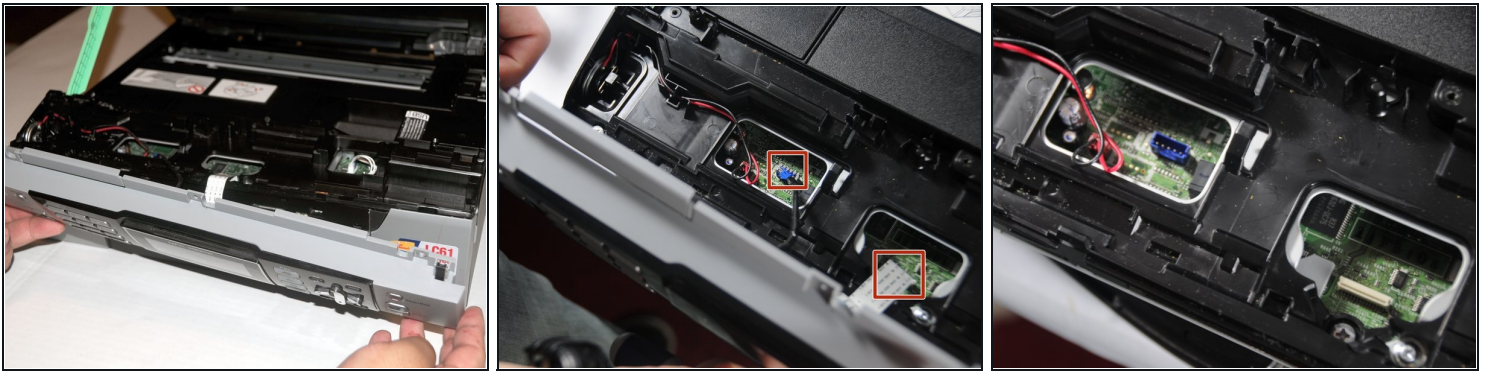
Phillips #2 Screwdriver (1)

Step 1 — Remove screws holding the front panel



- Use a Phillips #2 screwdriver to remove the three 12.1 mm screws holding the control panel in place.

Step 2 — Unplug the panel from the rest of the printer



- Lift up the front panel from the device.
 - Gently lift up and disconnect the data cables that attach the panel to the printer.
-

To reassemble the front panel, follow these instructions in reverse order.