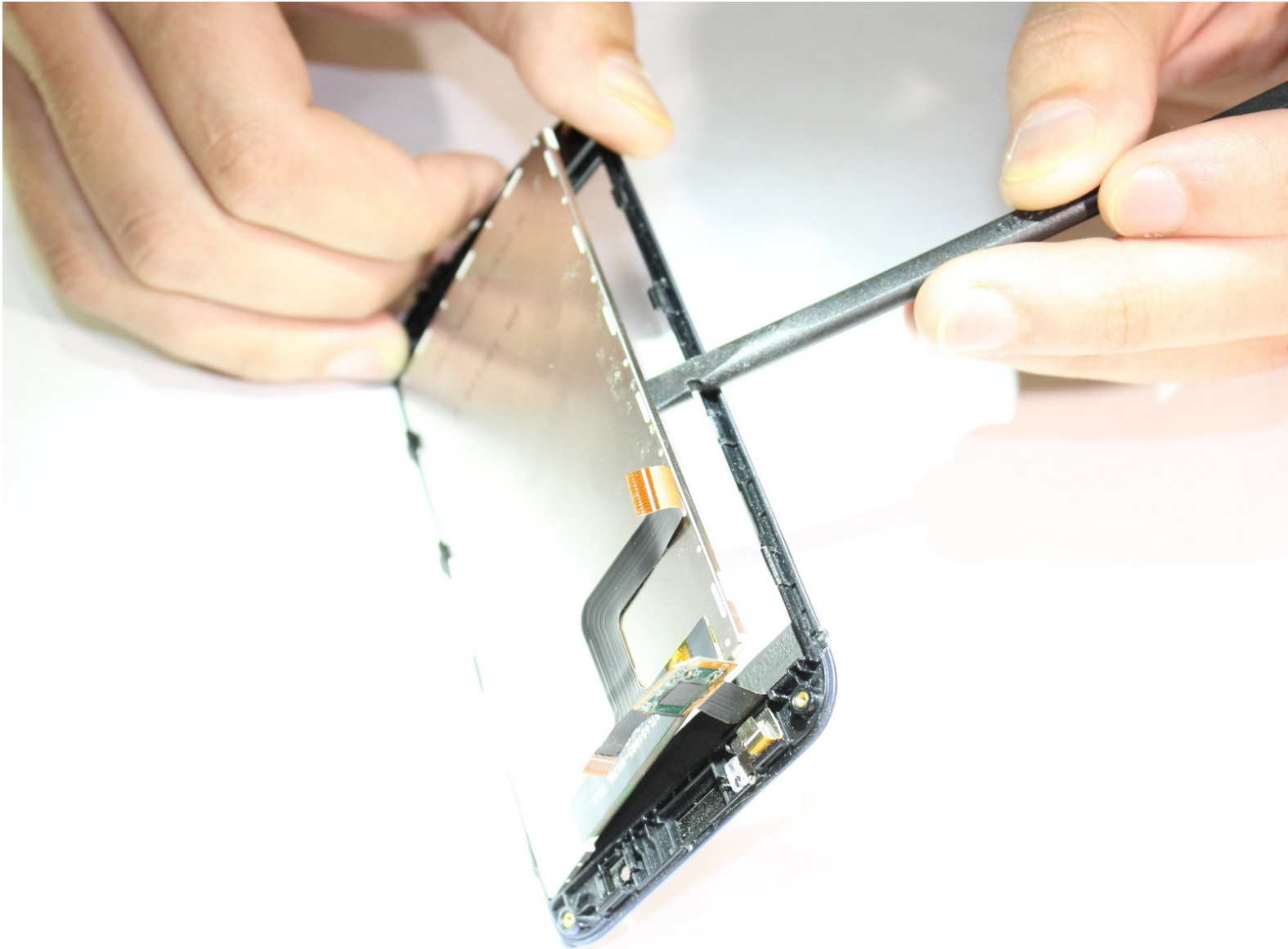




# ZTE Blade E Front Panel Replacement

Written By: Lilia Johnson





## TOOLS:

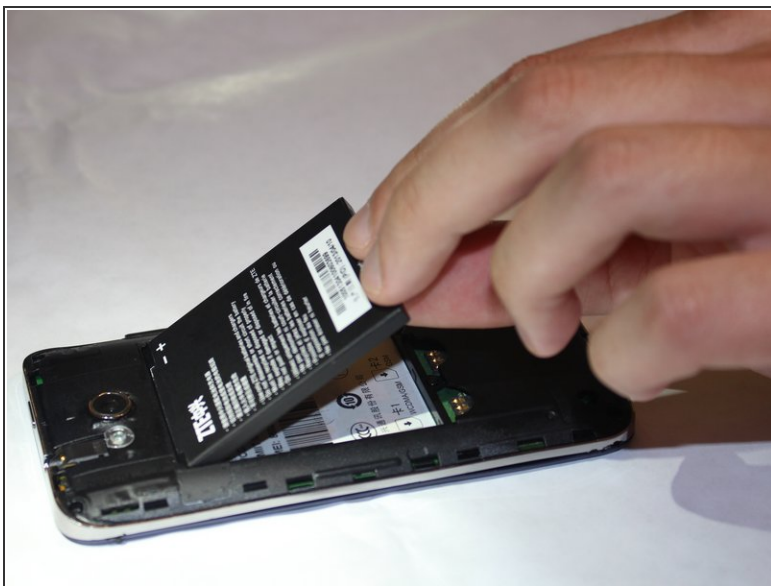
- [Phillips #00 Screwdriver](#) (1)
- [Spudger](#) (1)
- [Tweezers](#) (1)

## Step 1 — Motherboard



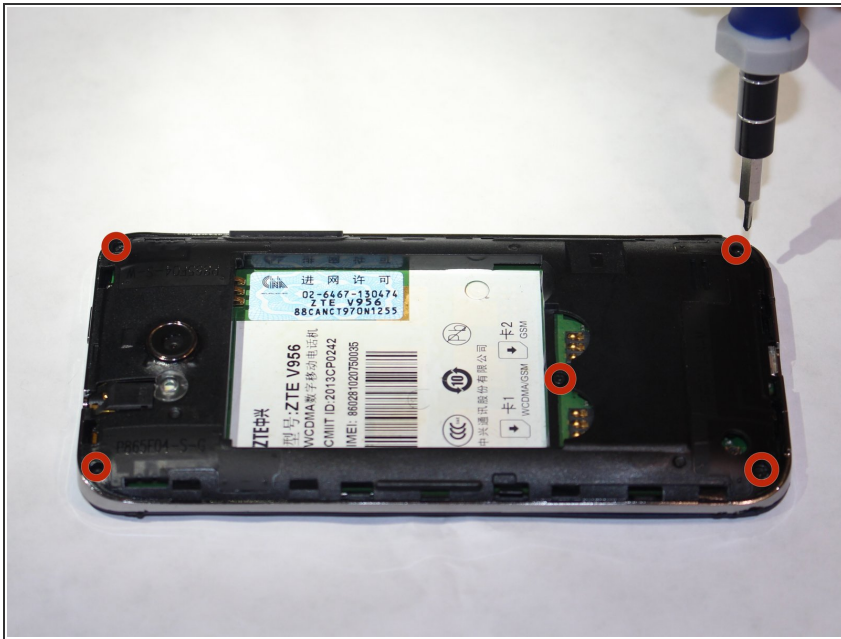
- Using a spudger, remove the back panel of the phone.

## Step 2



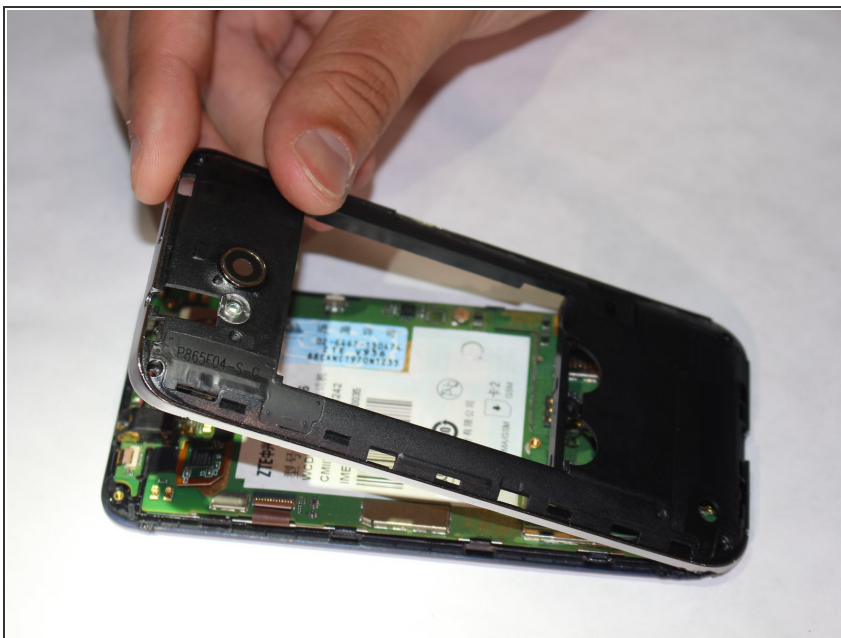
- Remove the battery and SD card from the phone.

## Step 3



- Remove the five 4mm Philips #00 screws, circled in red, holding the the back down.

## Step 4



- Remove the back piece, exposing the motherboard.



## Step 5



- Flip up the three small tan clips holding the ribbons in place.

## Step 6



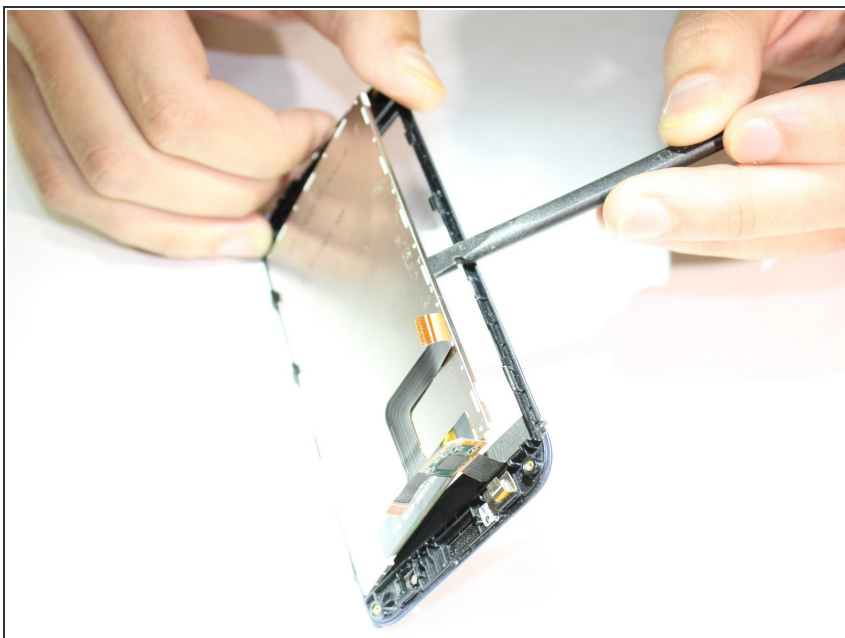
- Gently slide each of the three ribbons out of the motherboard.

## Step 7



- Slide the motherboard off of the ribbons detaching it from the front of the phone.

## Step 8 — Front Panel



- Carefully use the spudger to free the screen from the front panel. You can use your hands to pull it the rest of

the way out once you have freed the screen from the clips.

## Step 9



- Dispose of the old front panel and replace it with the new one.

To reassemble your device, follow these instructions in reverse order.