



ZTE Awe Screen Replacement

This is a total breakdown of the phone, and...

Written By: Jennifer DeMeo



INTRODUCTION

This is a total breakdown of the phone, and requires you to disassemble the parts pictured in order to access the screen.

TOOLS:

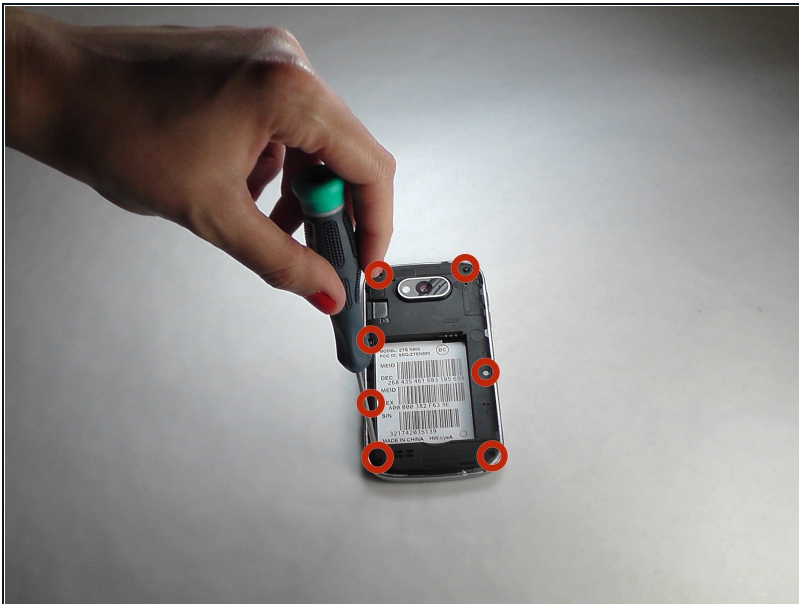
[Phillips #00 Screwdriver](#) (1)

[iFixit Opening Tool](#) (1)

[Tweezers](#) (1)

[Essential Electronics Toolkit](#) (1)

Step 1 — Detach the mid frame



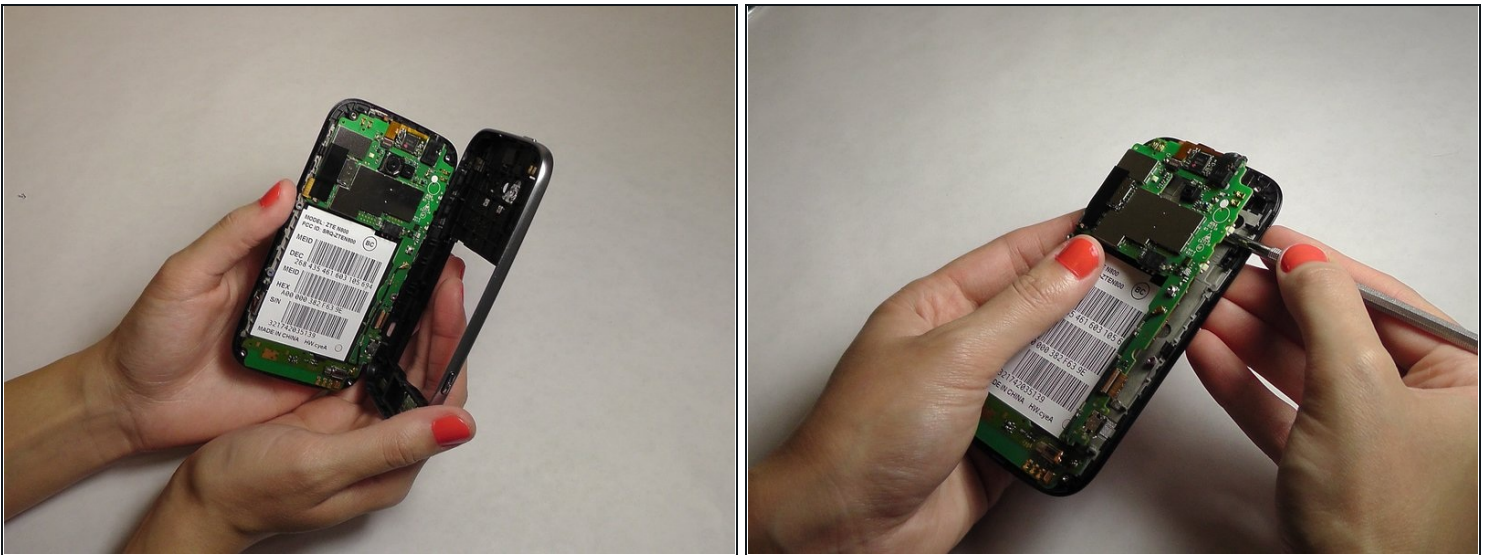
- Use the Phillips Head 00 screw driver to unscrew the seven 0.1mm screws from the phone's mid frame.

Step 2 — Separate the mid frame and the digitizer



- Wedge the flat end of the spudger between the mid frame and the digitizer.

Step 3 — Expose the motherboard



- Gently pry the mid frame away from the rest of the phone to expose the motherboard.

Step 4 — Remove the ribbon wires



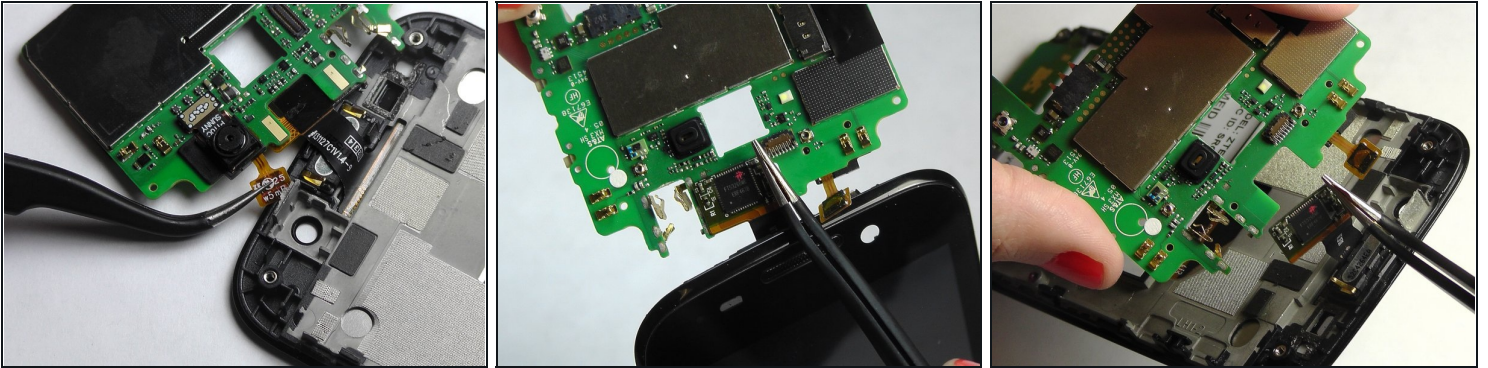
- Use the [tweezers](#) to remove the four ribbon wires on the sides of the device.

Step 5 — Orient the motherboard



- Orient the motherboard to expose the mid frame.

Step 6 — Remove the connector



- Remove the connector to free the motherboard from the screen.

Step 7 — Remove the cover



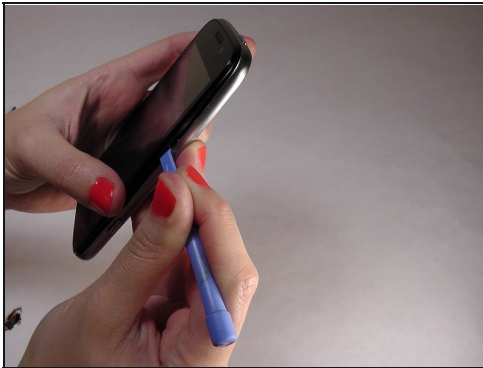
- Remove the back cover from the phone.

Step 8 — Remove battery



- Pry the battery up and out of the phone.

Step 9



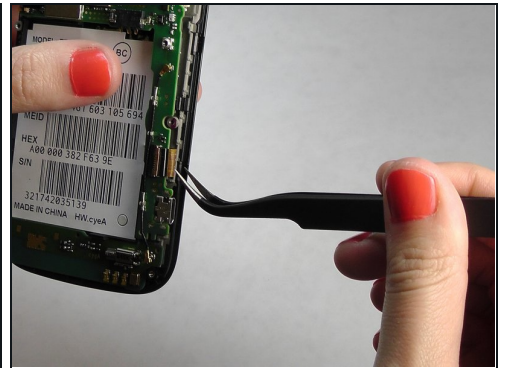
- Gently wedge the spudger in between the glass screen and the mid frame.

Step 10 — Separate the motherboard from the screen



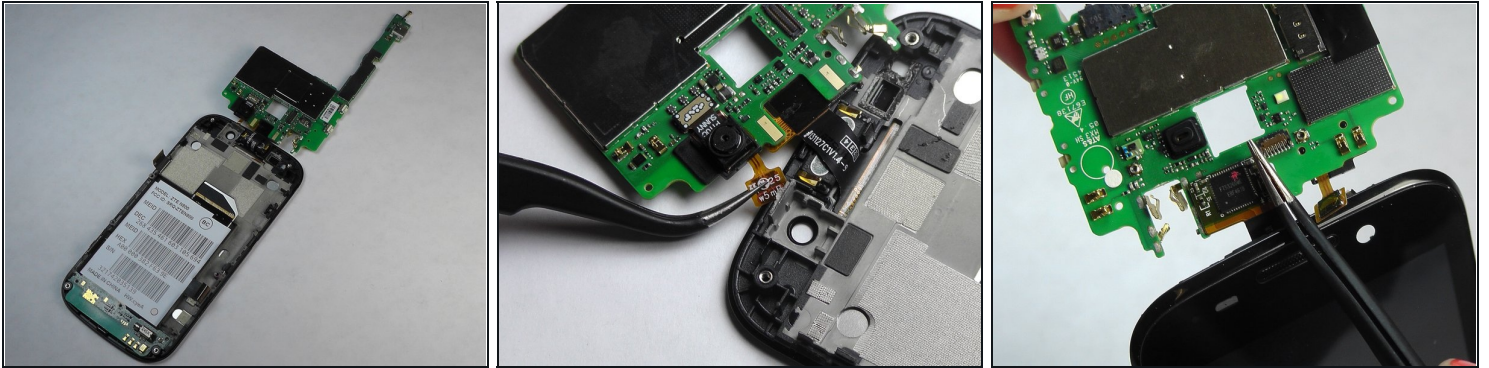
- Carefully pry the screen away from the motherboard.

Step 11 — Remove the ribbons



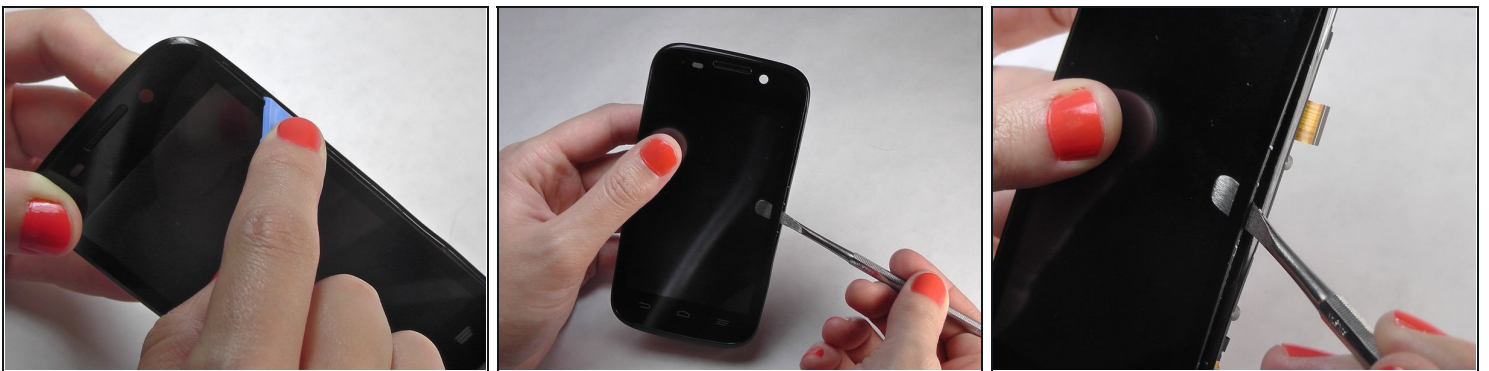
- Be careful when removing the ribbon wires. They are delicate.

Step 12 — Remove the remaining ribbons



- Remove the remaining two ribbon wires from their connectors.

Step 13 — Expose the digitizer



- Wedge the plastic spudger between the screen and the digitizer.
- Gently pry apart the screen from the digitizer.

To reassemble your device, follow these instructions in reverse order.