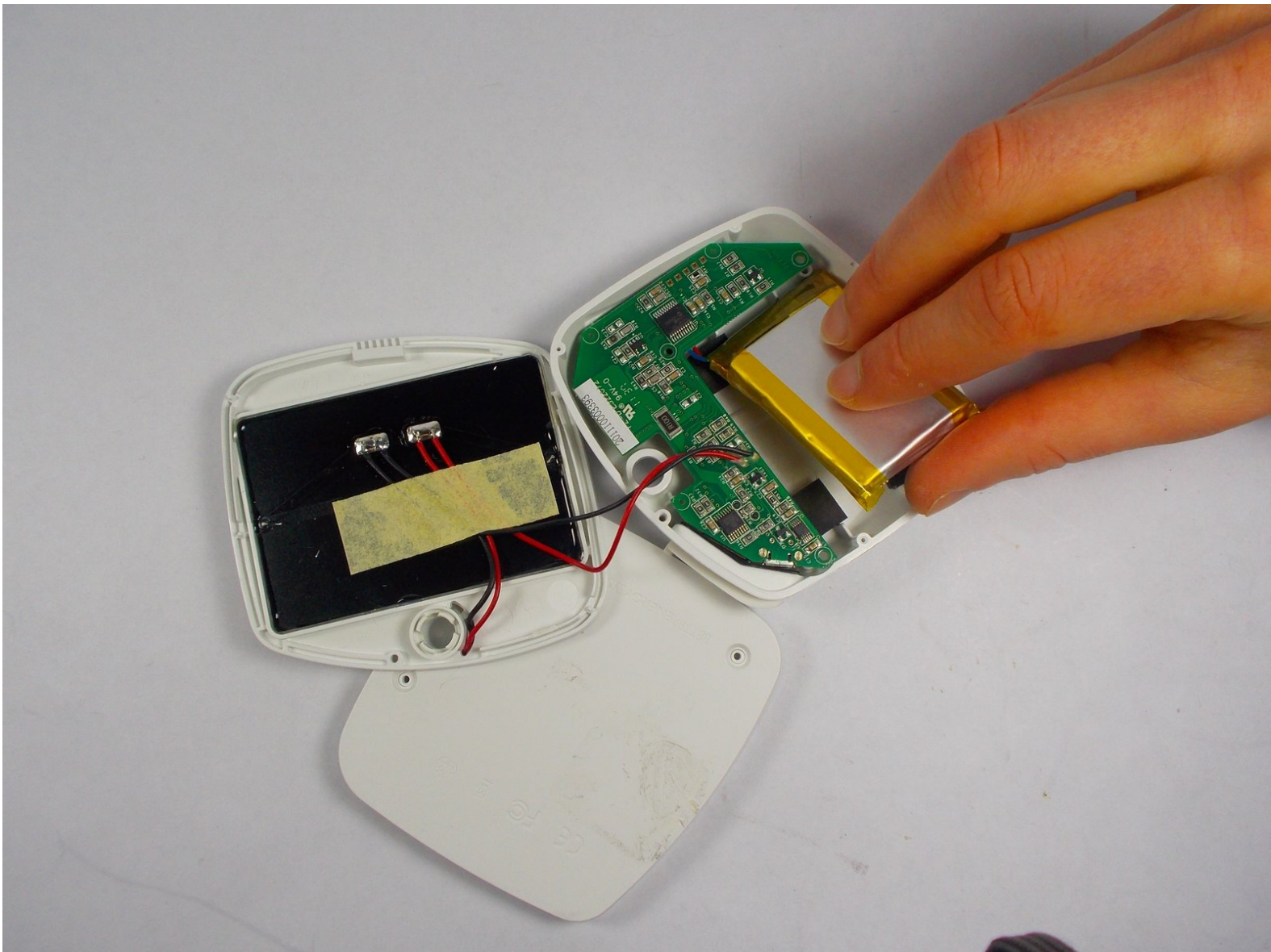




Written By: Ethel





TOOLS:

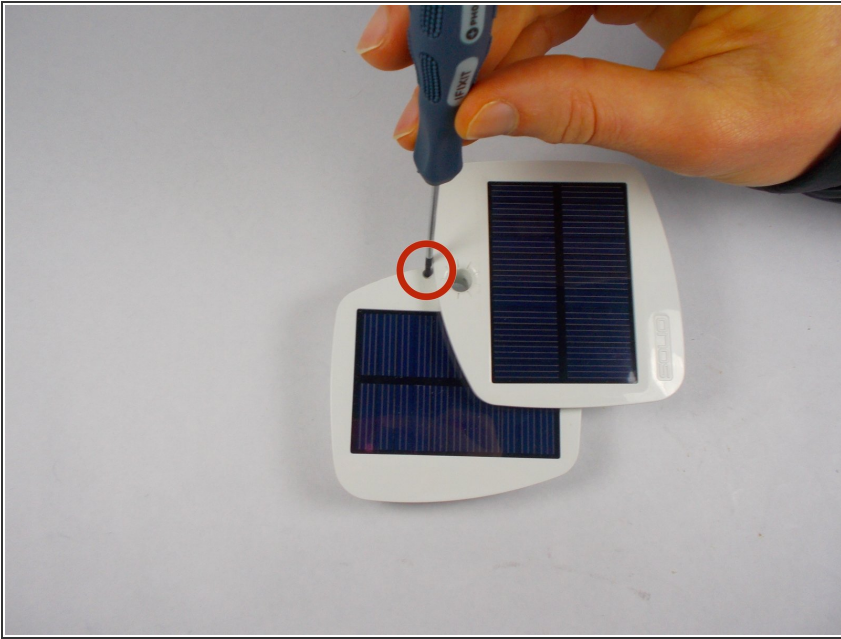
- [Phillips #00 Screwdriver](#) (1)
- [Spudger](#) (1)



PARTS:

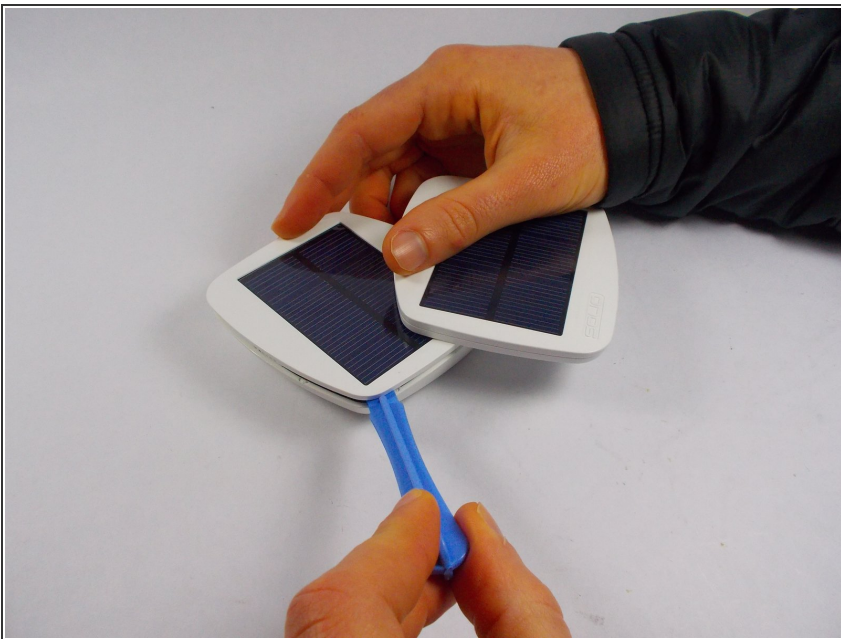
- [3.7V/2,000mAh Li-Poly Battery](#) (1)

Step 1 — Remove Screw



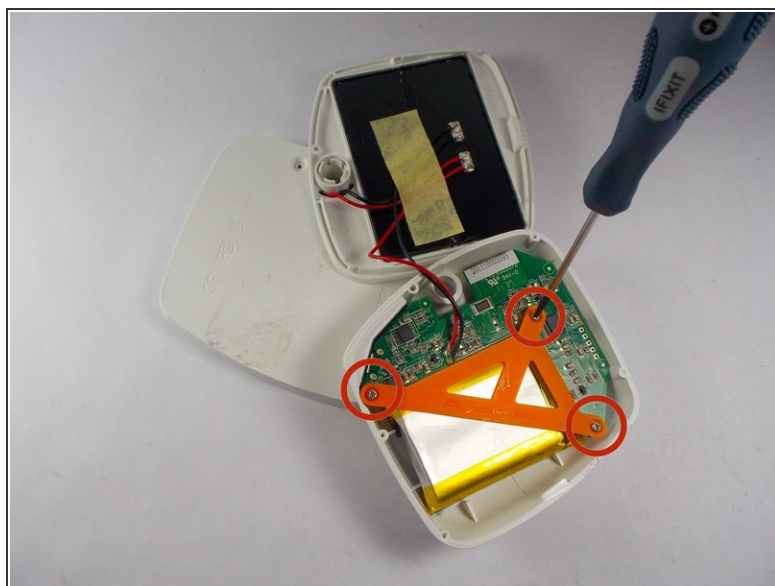
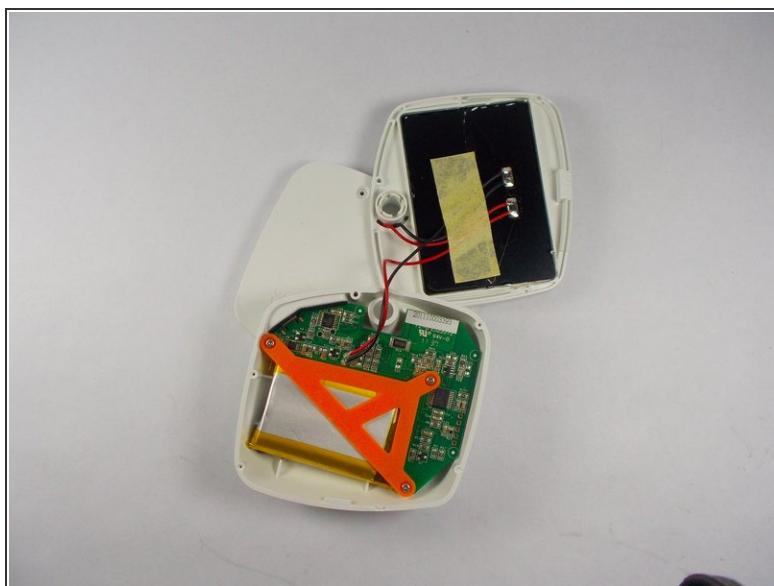
- Open the solar panel of the Solio Bolt. Using a philips screwdriver, remove the screw.

Step 2 — Open Case



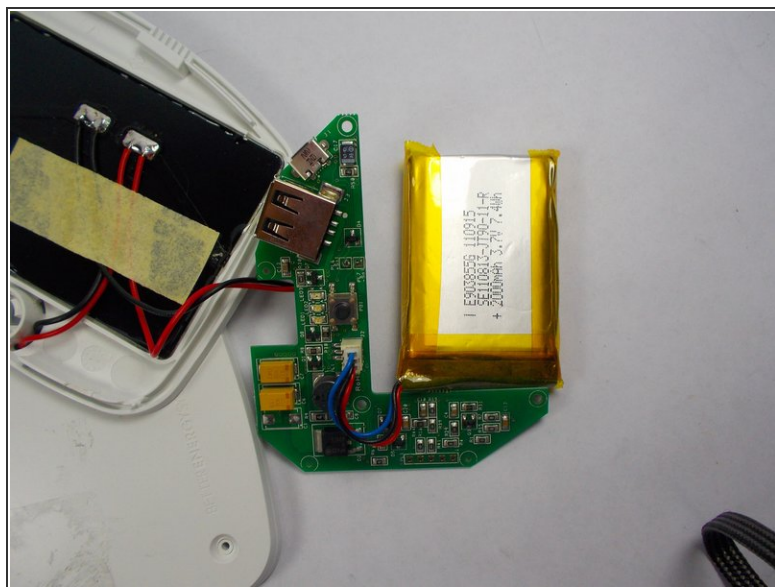
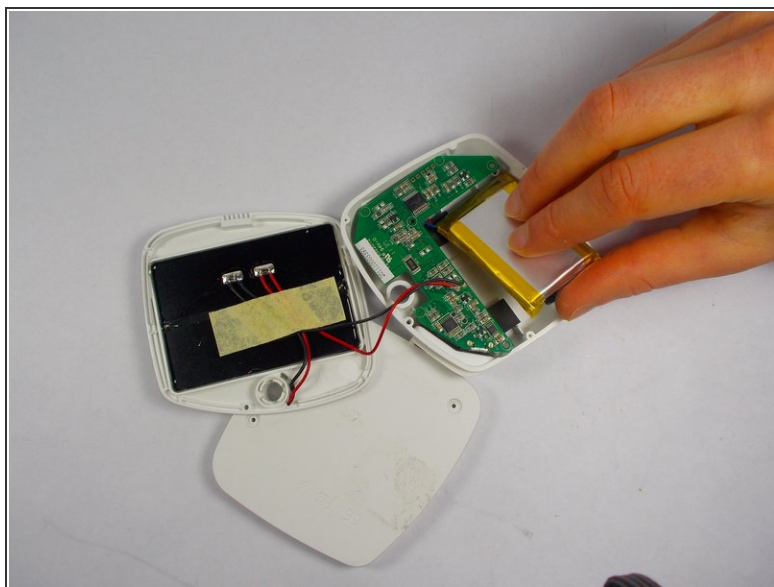
- Use a plastic spudger to pry apart the case.

Step 3 — Remove The 'Battery Holder' Assembly



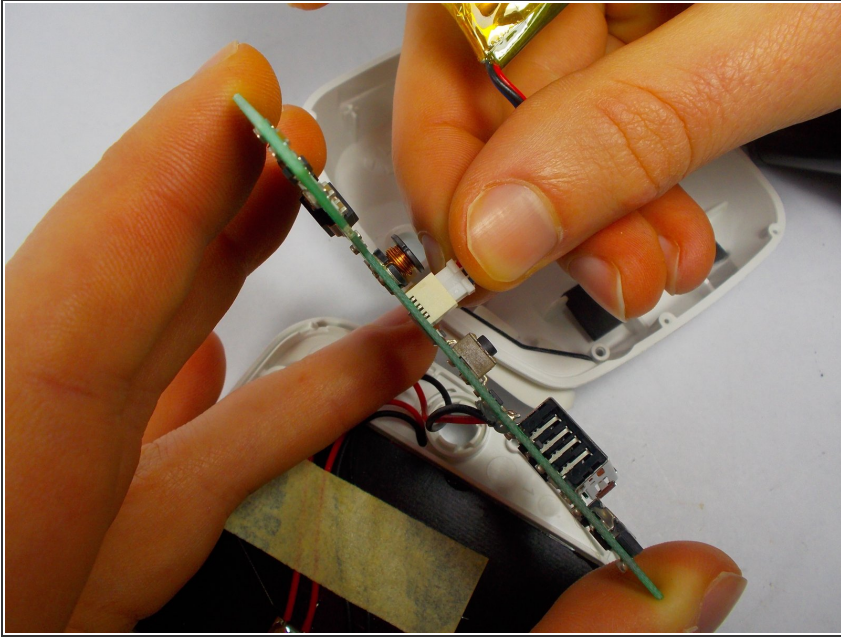
- Use a philips screwdriver to remove the three screws securing the battery cradle to the device case.

Step 4 — Free Motherboard



- Move the battery slightly, the motherboard can now be lifted from the device case.

Step 5 — Disconnect Battery



- On the underside of the motherboard, remove the battery lead from its connecting terminal.

To reassemble your device, follow these instructions in reverse order.