



Canon EOS 5D Mark II Top Panel Replacement

This guide will show users how to replace the...

Written By: Mike Seed



INTRODUCTION

This guide will show users how to replace the top panel and access many internal parts such as the viewfinder and shutter assembly.

TOOLS:

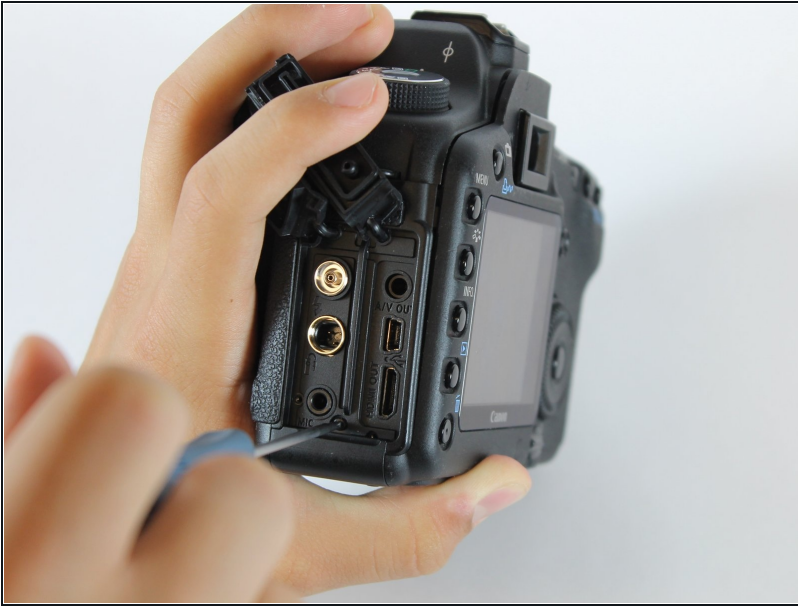
Phillips #0 Screwdriver (1)

Step 1 — Clock Battery



- Lift the rubber flap covering the input/output jacks.

Step 2



- Using a Phillips #000, remove the single 3.4 mm screw.

Step 3



⚠ This step will permanently erase all user settings.

- The memory battery can now be easily slid out of place.
- ① If you are following this guide in an effort to perform a hard reset, you should now press the shutter button multiple times in order to drain any left over power, then replace the batteries and power the device back on. You have just performed a hard reset!

Step 4 — Back Panel



- Peel back the rubber cover above the in/out ports to reveal two screw heads.

Step 5



- Remove both 5.4 mm screws using a Phillips #0.

Step 6



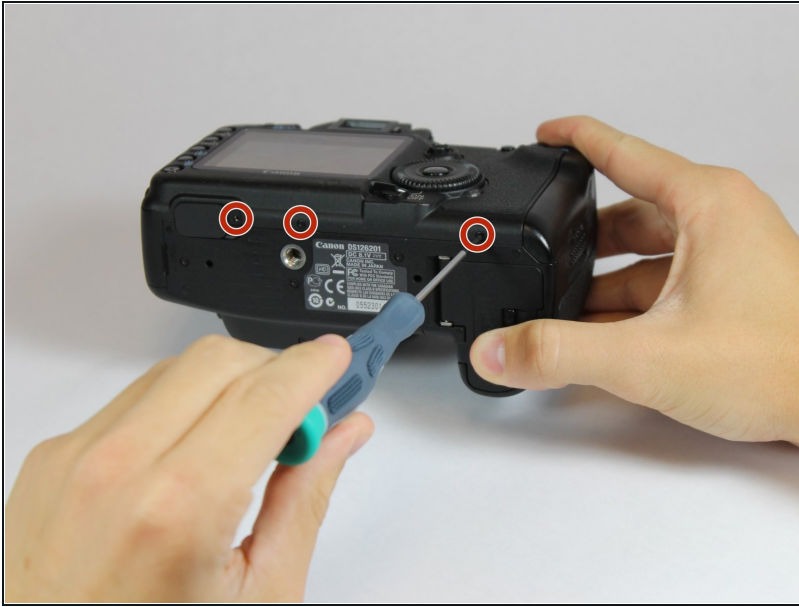
- Lift the in/out port plastic covering from the bottom where the backup battery used to be.

Step 7



- Remove each 6.3 mm screw on either side of the viewfinder using a Phillips #0 screwdriver.

Step 8



- Remove the three 4.8 mm screws on the bottom of the back plate using a Phillips #0.

Step 9



- Peel back the rubber covering next to the menu dial to access the screw.
- Remove the single 3.4 mm screw using a Phillips #0.

Step 10



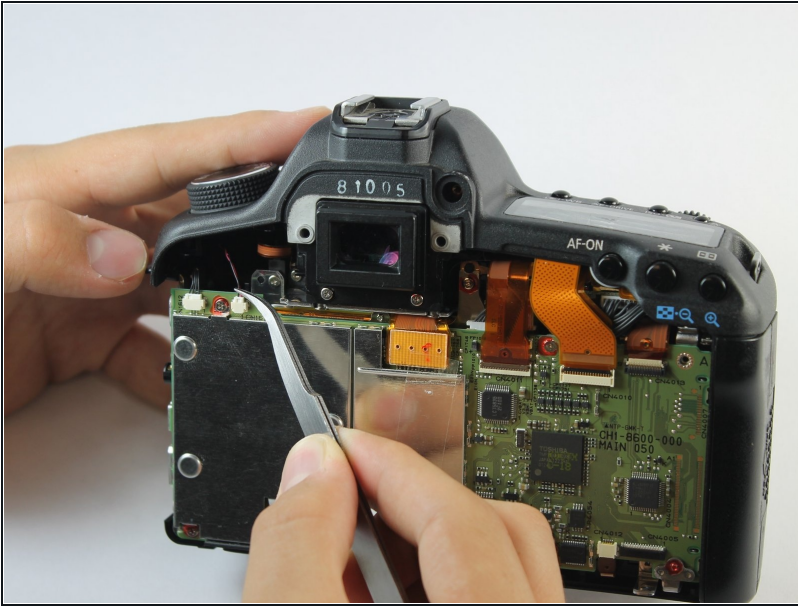
- The back panel can now fall off easily by turning the device upside down. Be sure to catch it so the data ribbons do not tear or tug.

Step 11



- Remove each data ribbon cable from the motherboard by applying pressure down towards the motherboard and gently sliding your thumb upwards on the slot where the cable meets the motherboard. This will raise a very small clip that locks the cable in place.
- The back panel is now free from the rest of the device.

Step 12 — Front Panel



- Using [tweezers](#), pull out the wire attaching the front panel to the motherboard.

Step 13



- Peel off the rubber cover on the front panel in order to access the screws underneath.

Step 14



- Remove each of the 4.9 mm three screws using a Phillips #0.

Step 15



- Remove the two 4.8 mm screws above where the lens would be using a Phillips #0.

Step 16



- Remove the single screw underneath where the lens would be using a Phillips #0.

Step 17



- Remove the four 3.0 mm screws next to the memory card reader using a Phillips #0.

Step 18



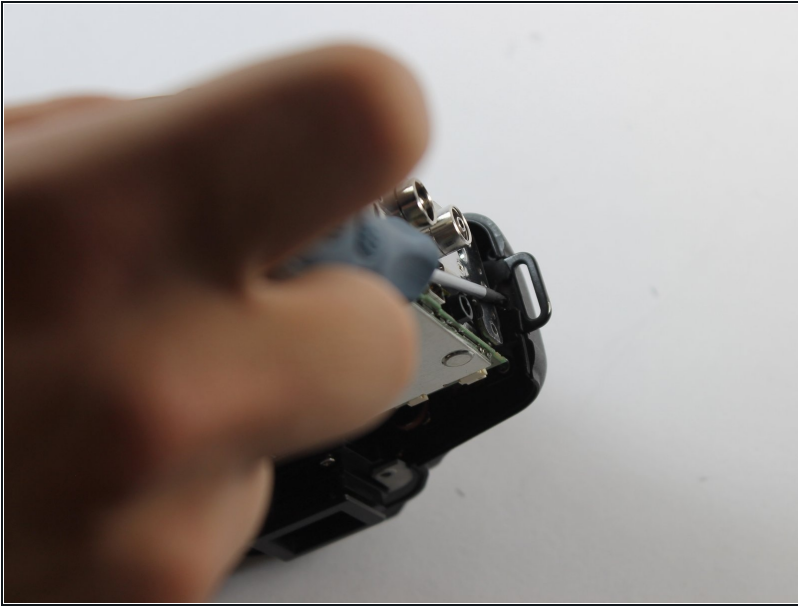
- Remove the front panel by lifting upwards from the right side where the in/out ports used to be.

Step 19 — Top Panel



- Remove the single 5.9 mm screw next to the the strap loop on the same side as the shutter button.

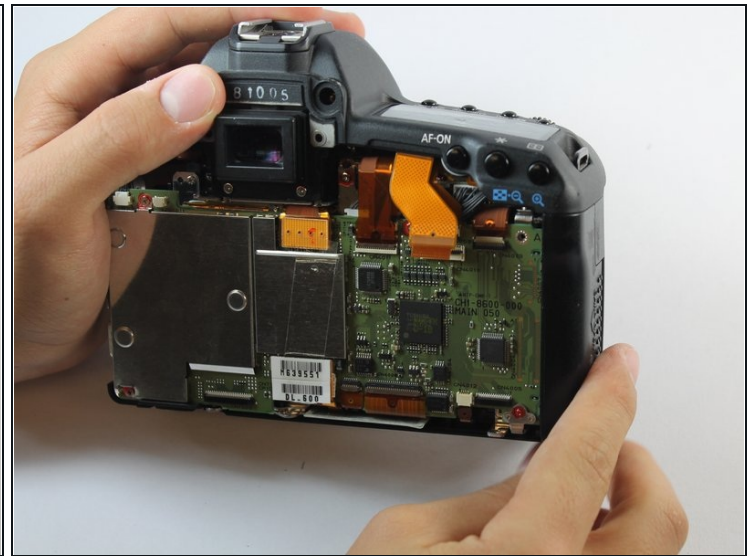
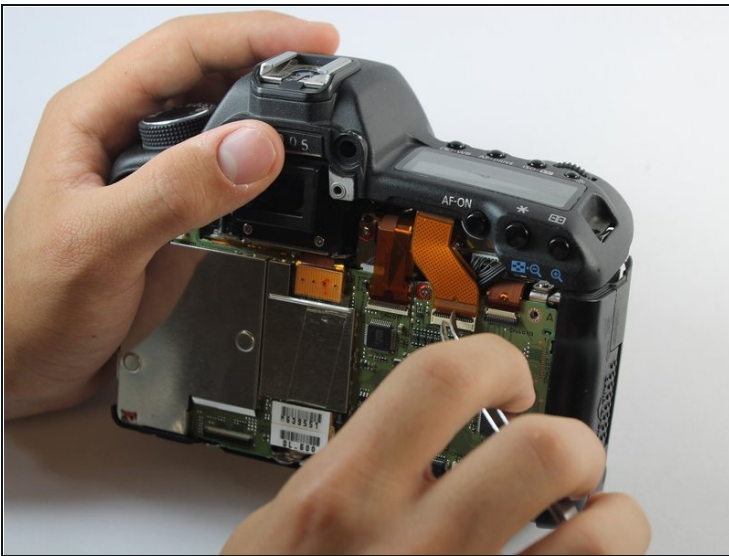
Step 20



- Remove the single 3.8 mm screw underneath the camera strap on the same side as the in/out ports.

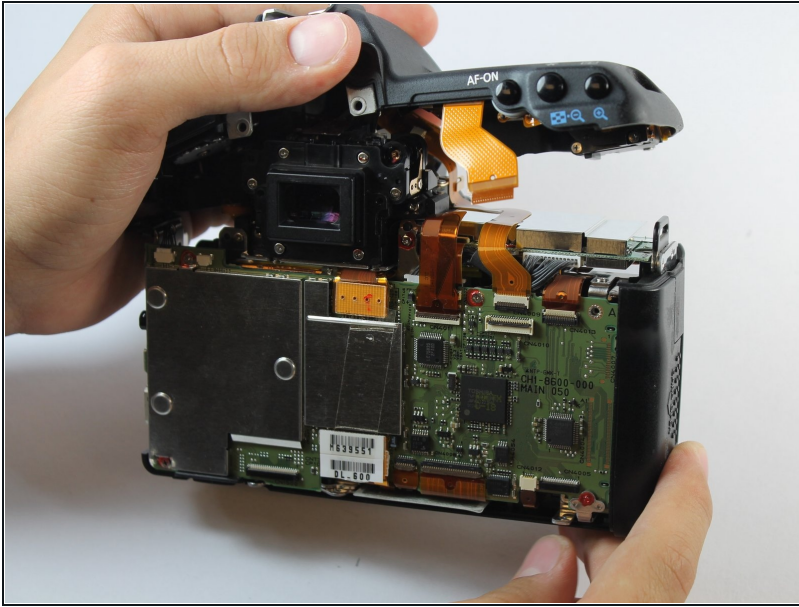
ⓘ If you are having problems finding this screw, note the orientation of the viewfinder in the bottom center of the photo.

Step 21



- Using [tweezers](#) or your thumb, raise the clasp holding the topmost data ribbon cable in order to release it.

Step 22



- The top panel is now free from the rest of the device. Lift to remove.

To reassemble your device, follow these instructions in reverse order.