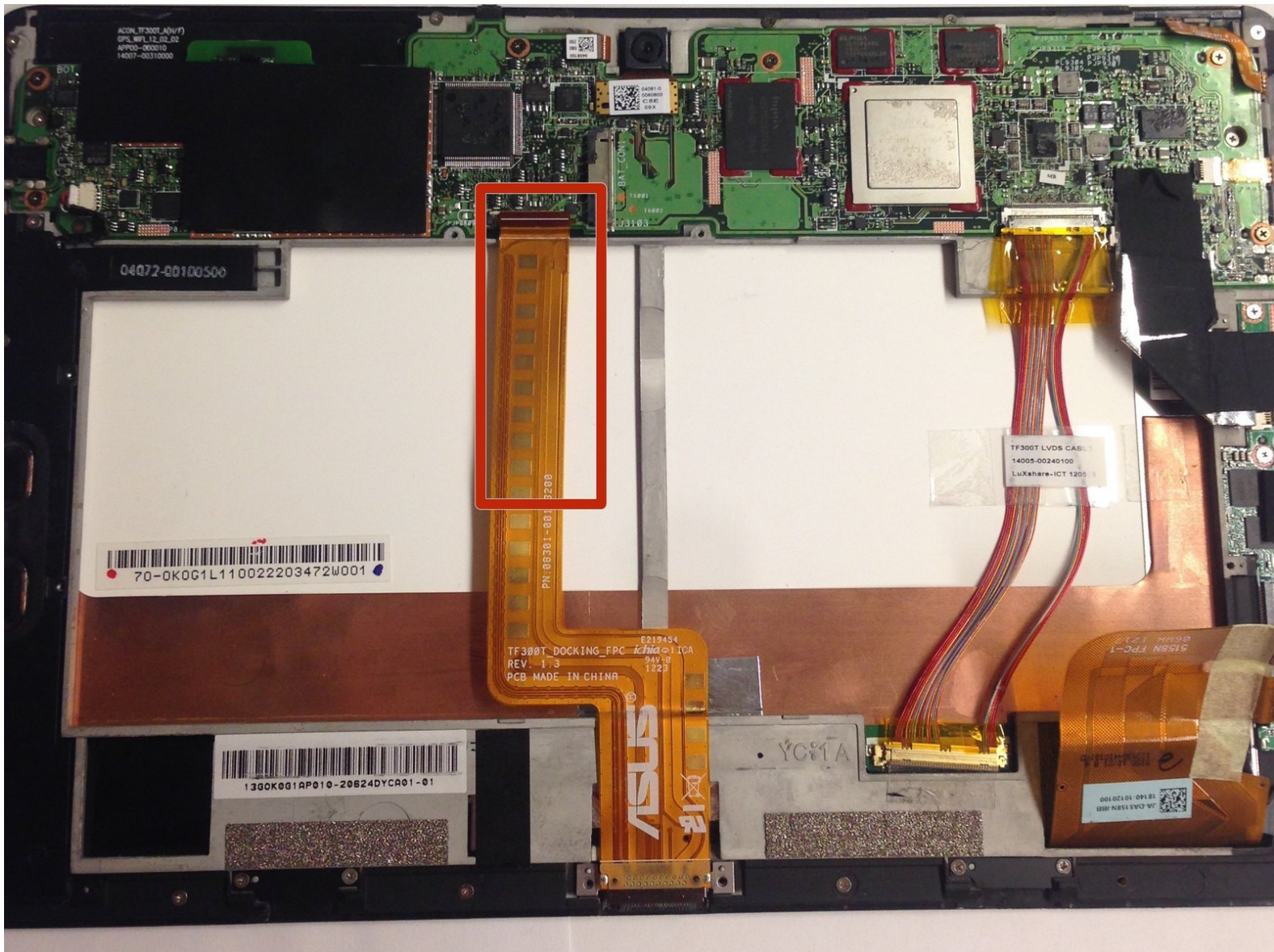




# Asus TF300T Tablet Charging Port Replacement

This guide is intended for those who are experiencing trouble charging their Asus TF300T Android Tablet and their battery is still working

Written By: Jonathan Barros



## INTRODUCTION

Some people may be experiencing difficulties trying to charge their Asus TF300T Android Tablet. Although it may seem like the battery is at fault it may actually be a faulty charge port. The charge port can be damaged by dropping the tablet, forcing the charger into the port, and even dust. This replacement guide is a last resort if troubleshooting has failed the user.



### TOOLS:

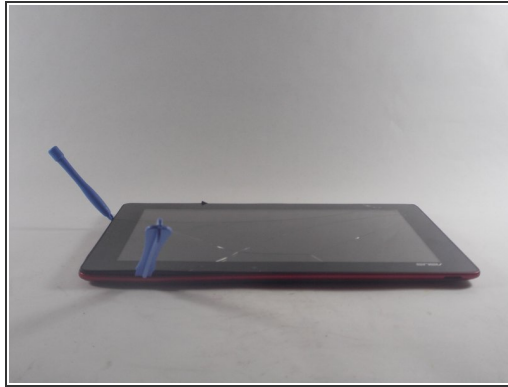
- [Phillips #00 Screwdriver](#) (1)
- [iFixit Opening Tools](#) (1)
- [Spudger](#) (1)
- [Tweezers](#) (1)



### PARTS:

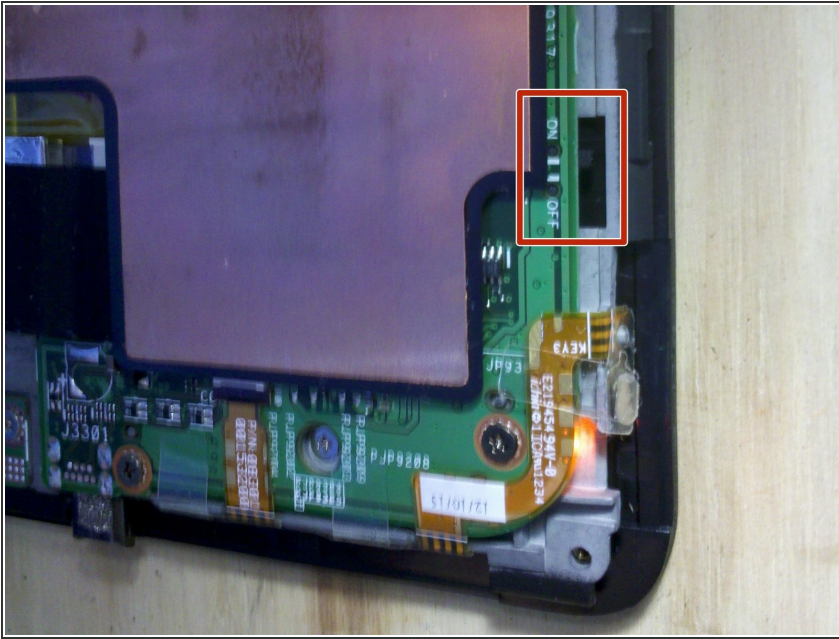
- [ASUS Transformer Pad \(TF300T\) Charging Port](#) (1)

## Step 1 — Back Panel Removal



- Begin the process by making sure that the dock is disconnected and the power is turned off.
  - Start by using the plastic opening tool on the side opposite the dock/ charging port. Begin to open the device along the short sides of the tablet.
- ⚠ When you have reached the side with the charging/ dock port be gentle with the opening tool due to the thinner plastic that could be broken with excessive force.
- Once the opening tools have completely made their way around the device use the spudger to separate the back panel from the screen and expose the inside.

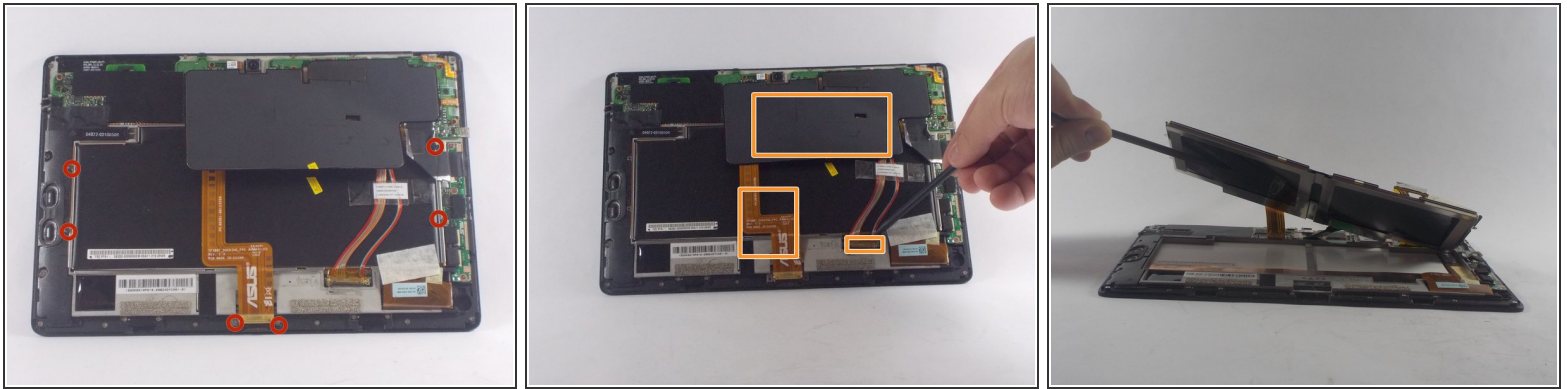
## Step 2 — Turn Off the Power



- The Asus Transformer series tablets have a hard power switch. This should be turned off before working on the tablet.
- Locate the power switch near the power button on the top left. Use a tool to slide it to the position marked 'off'
- ⓘ For many repairs, like replacing the screen or digitizer, you do not need to remove the battery once you have turned the tablet off. Be very careful not to short anything out with metal tools!

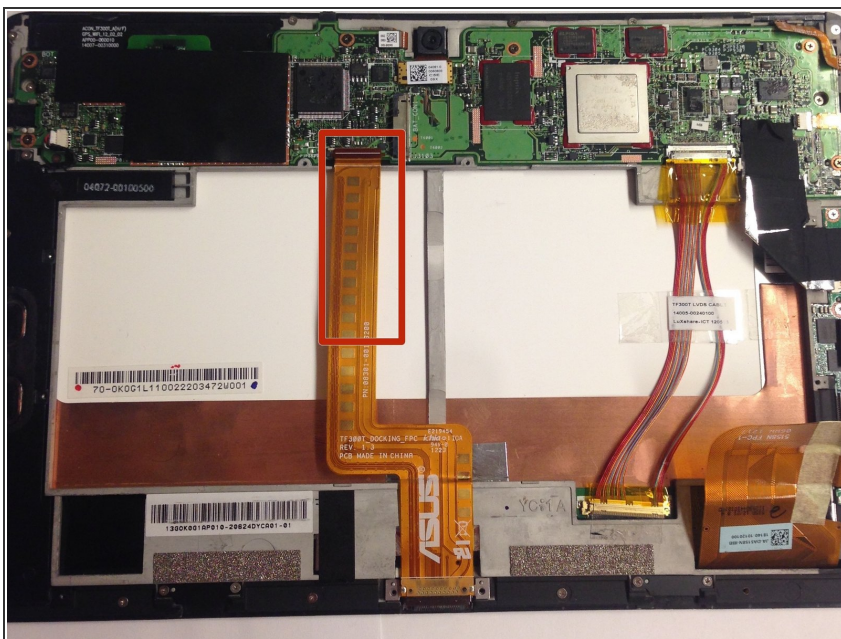


## Step 3 — Battery Removal



- Using the Phillips #00 screwdriver remove all of the screws connecting the battery to the mother board.
- Once the initial screws have been removed as indicated by the photo, use the spudger to remove the cover concealing the the clips for the dock sensor and a few more screws.
- Again remove the screws with the same screwdriver and use the spudger to disconnect the spudger sesors from their respective clips.
- Once the battery is freed use the spudger to remove the battery from its spot

## Step 4 — Charging Port



- With the battery removed, the charging strip is freely accessible with tweezers. Carefully flip up the white retaining flap on the cable's [ZIF connector](#), and slide the cable out.

To reassemble your device, follow these instructions in reverse order.