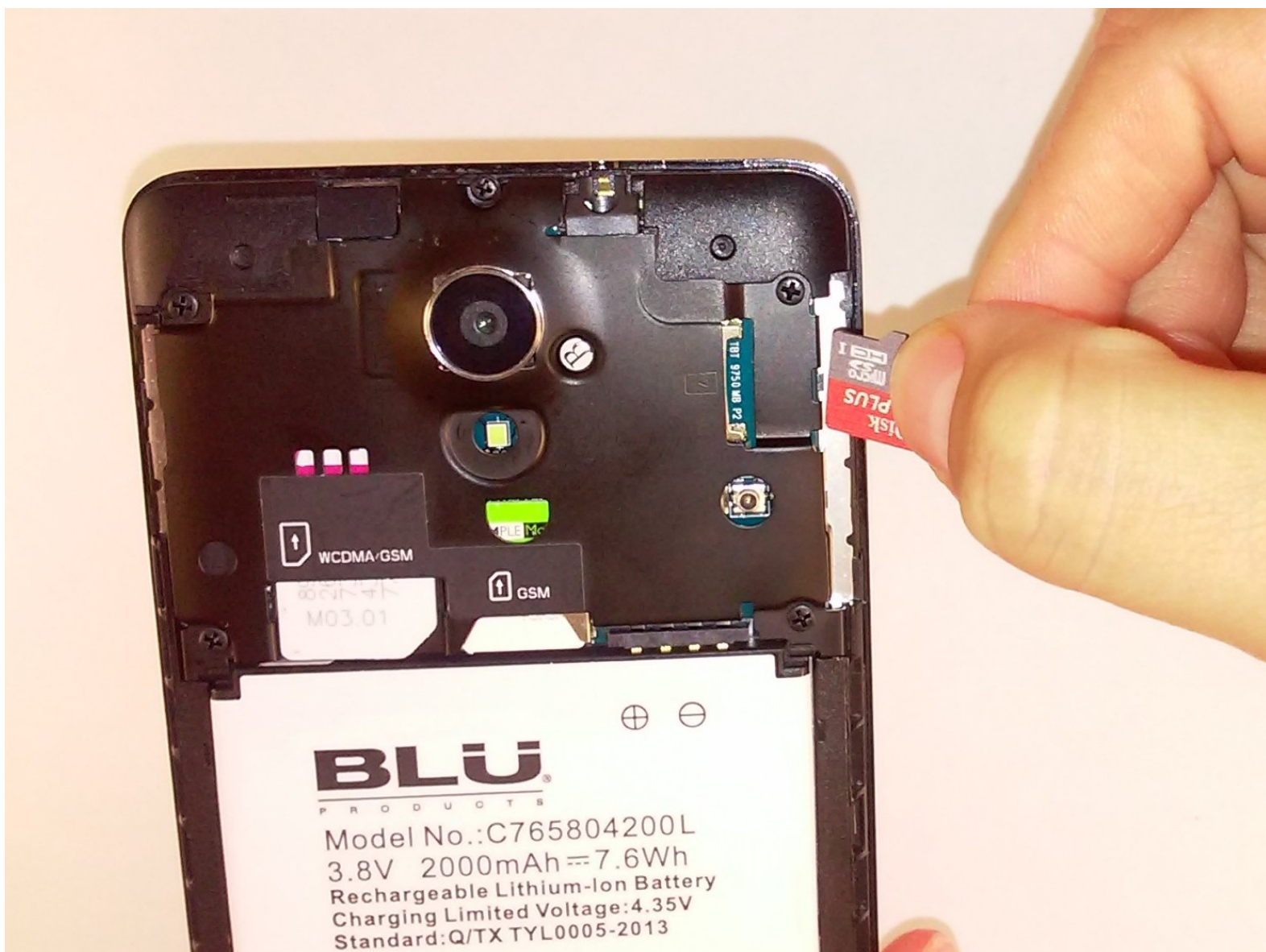




Blu Studio 5.0 S II MicroSD Card Replacement

This guide will accomplish the memory card replacement.

Written By: Sandra Estevane



INTRODUCTION

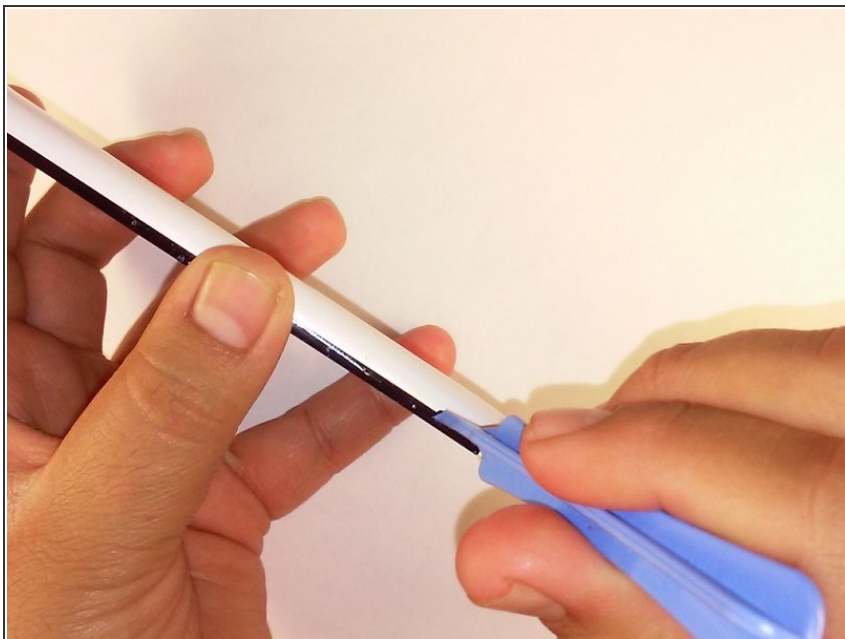
This guide will show you how to replace the memory card of the Blu Studio 5.0 S II.



TOOLS:

- [iFixit Opening Tools](#) (1)
-

Step 1 — Remove back cover



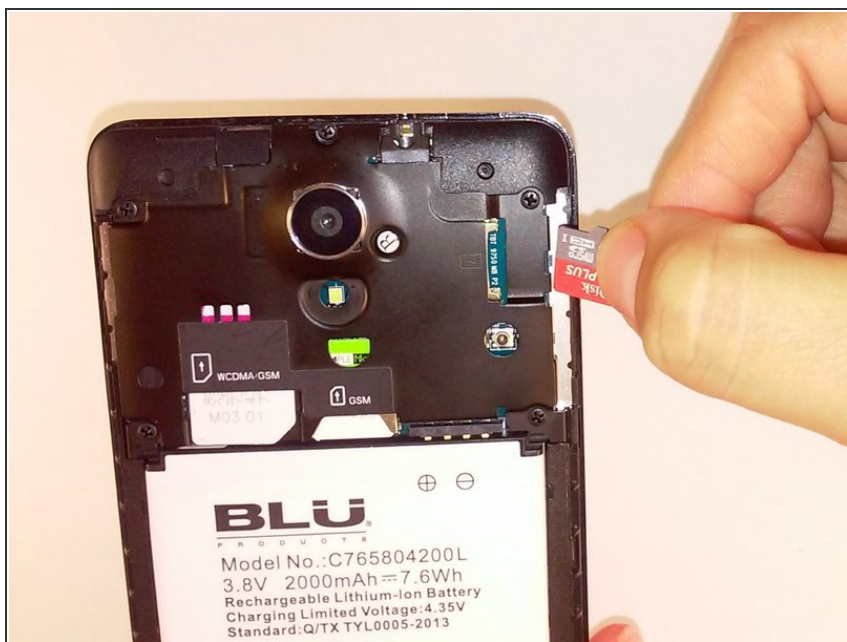
- Remove the back cover of the phone with the plastic opening tool.

Step 2 — Remove memory card



- Using a pair of tweezers or your fingers, gently pull out the memory card.

Step 3 — Insert new memory card



- Replace the old memory card by inserting new memory card.

To reassemble your device, follow these instructions in reverse order.