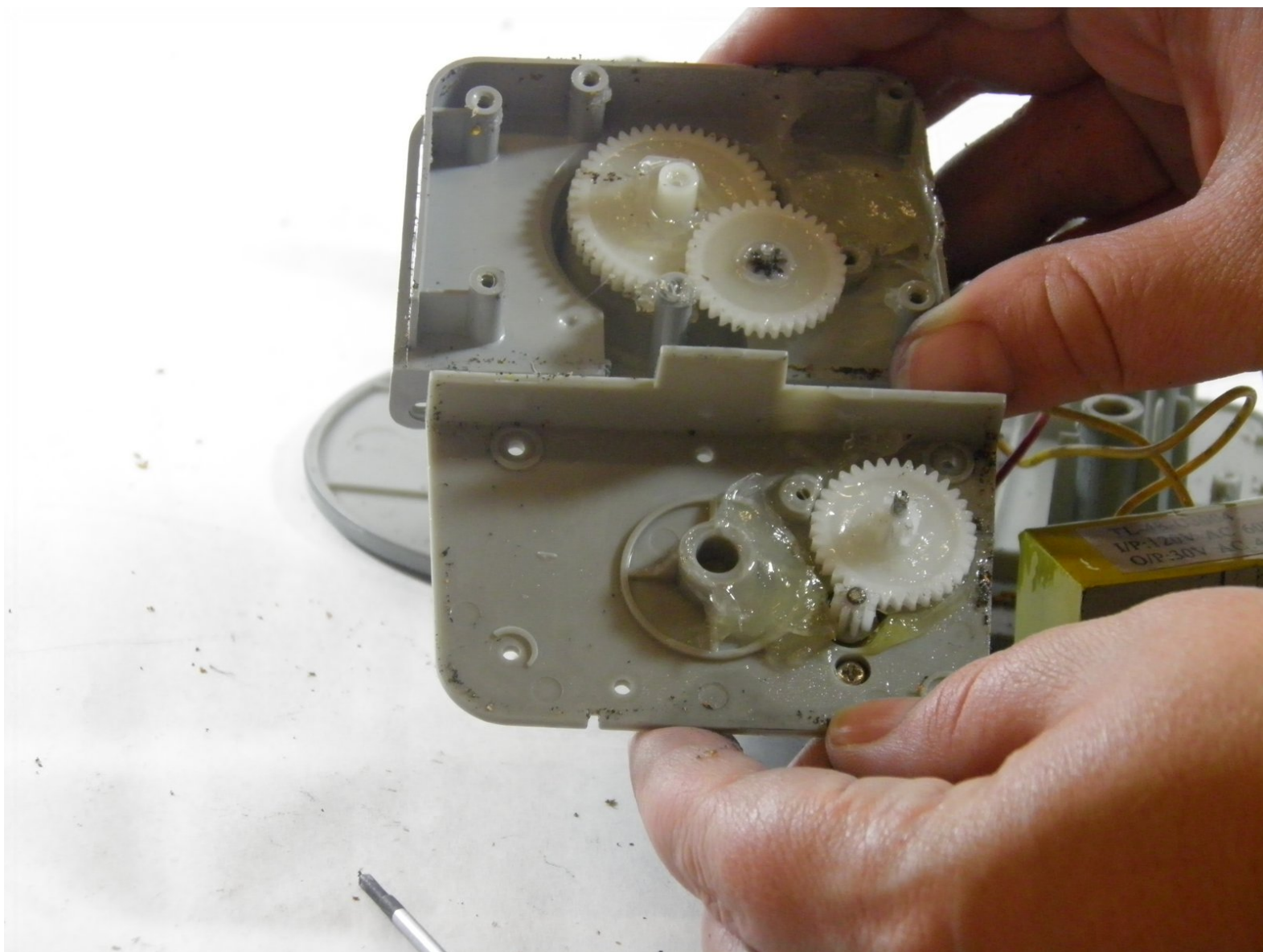




# Staples 34462 Electric Pencil Sharpener Gears Replacement

This guide will walk you through the steps for replacing your gears in your Staples 34462 Electric Pencil Sharpener.

Written By: Brian Eliason



---

## INTRODUCTION

If your sharpener is making a loud grinding noise or the electric motor is running but the cutter is not rotating, then follow these steps to replace the gears in your Staples 34462 Electric Pencil Sharpener.




### TOOLS:

- [Phillips #00 Screwdriver](#) (1)
  - [iFixit Opening Tools](#) (1)
  - [Spudger](#) (1)
-

## Step 1 — Cover



- Pull out the shavings tray from the pencil sharpener.

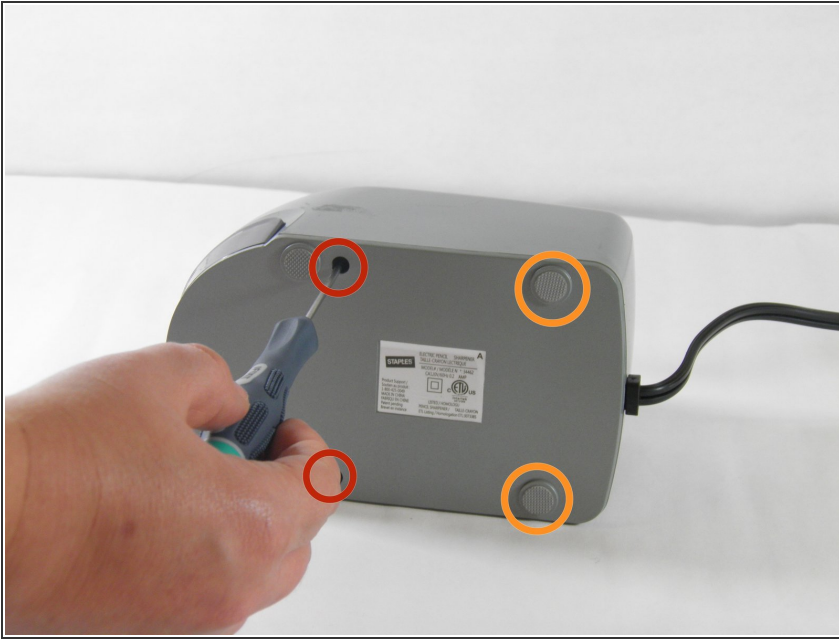
 Beware of loose pencil shavings falling on your workspace.

## Step 2



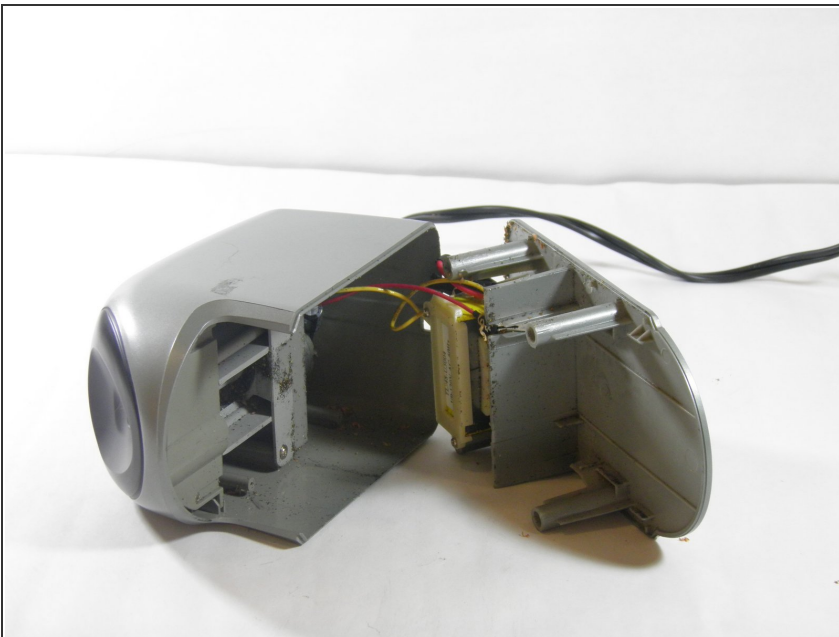
- Turn the pencil sharpener on its side.

## Step 3



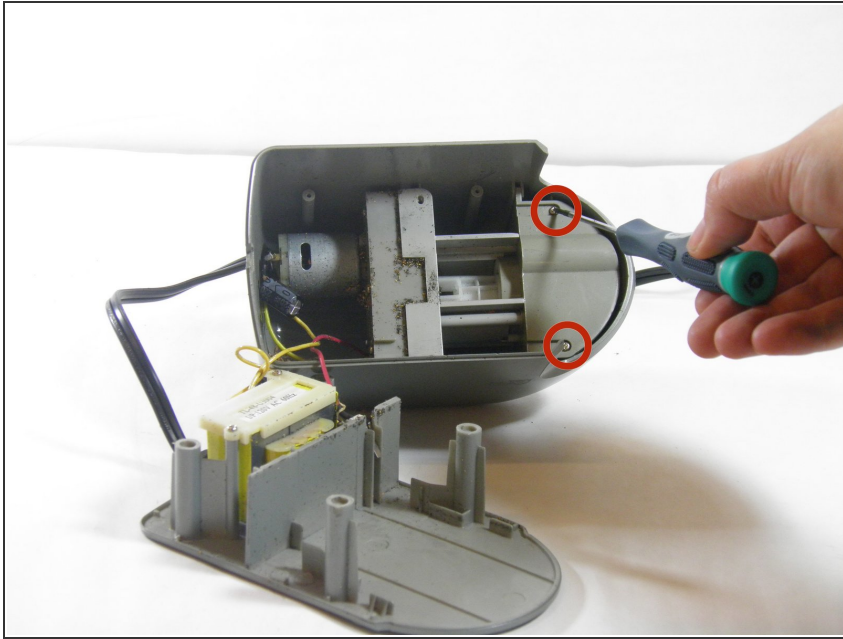
- Using a Phillips00 screwdriver, remove the two front 11.6mm screws.
  - Using the plastic opening tool, remove the back plastic feet.
  - After removing the back plastic feet, using a Phillips 00 screwdriver, remove the two back 11.6mm screws.
- i** The hole is deeper than you may think. It may take some time to get the screwdriver to click in.

## Step 4



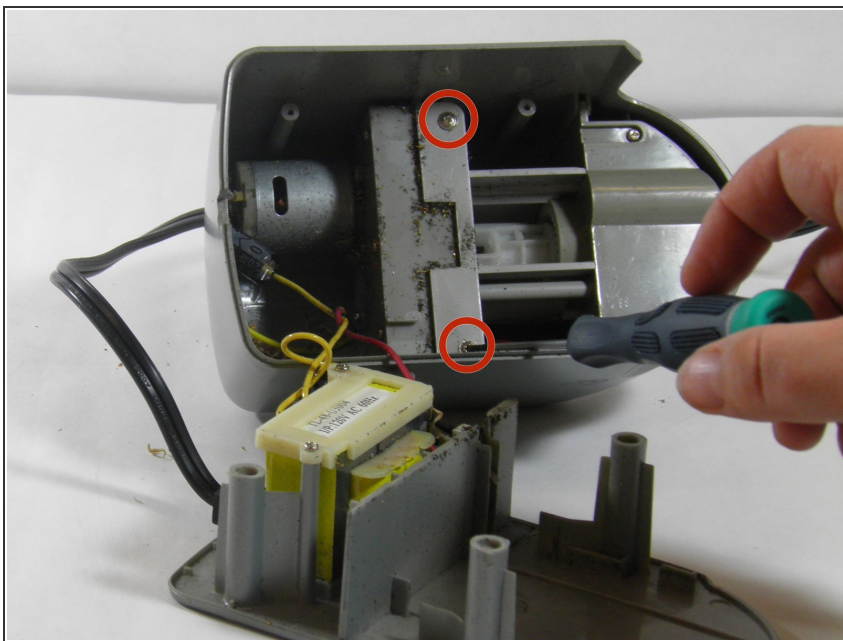
- Carefully pull apart the bottom panel from the top panel.
- !** Be careful not to pull too forcefully as the panels are connected by wires.
- !** Beware of pencil shavings falling out onto your workspace.

## Step 5



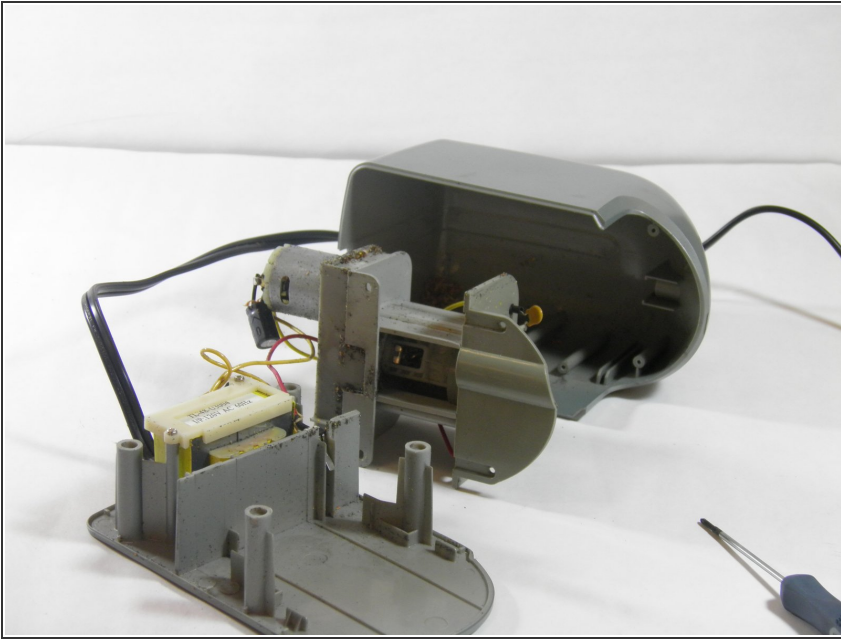
- Using a Phillips00 screwdriver, remove two 8.9mm flat edge screws from the top section of the top panel.

## Step 6



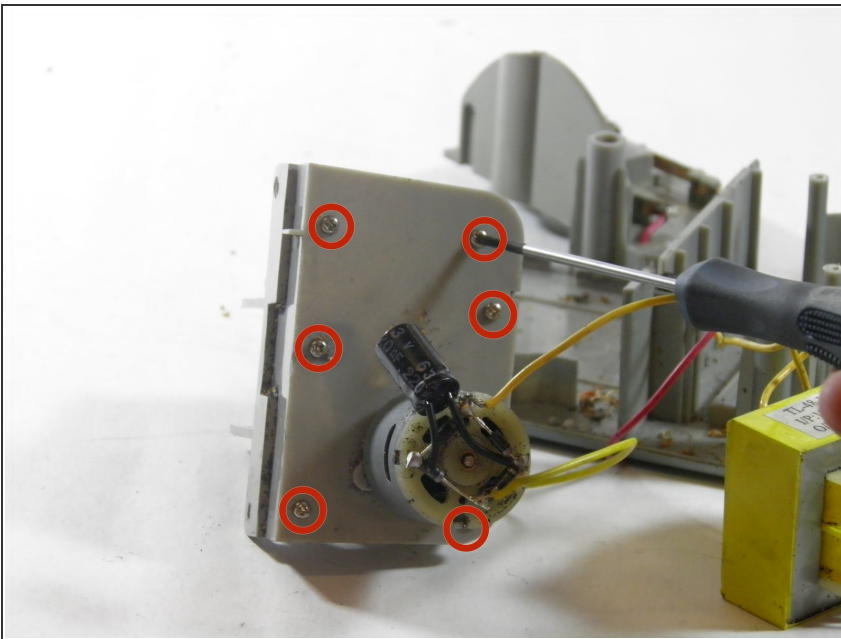
- Using a Phillips00 screwdriver, remove two 10.3mm screws from the middle section of the top panel.

## Step 7



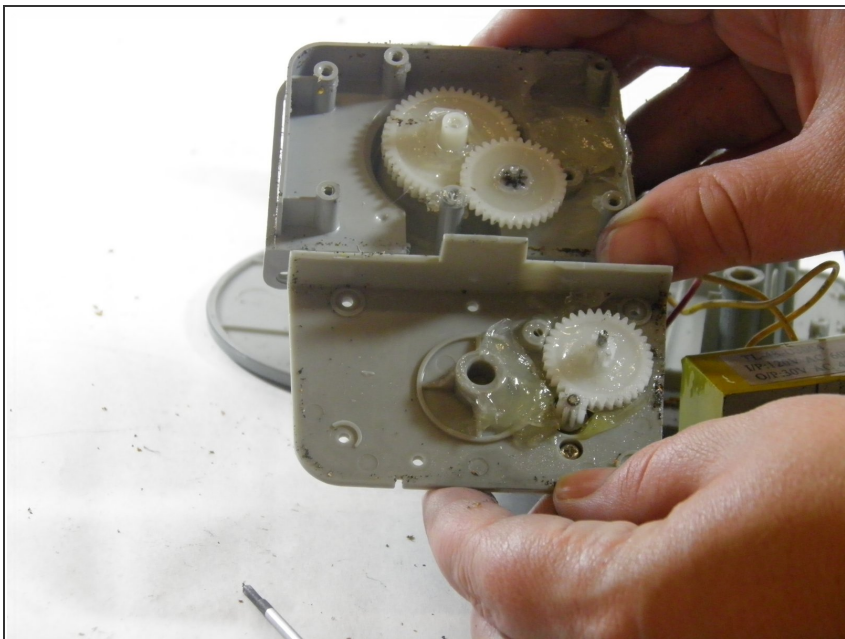
- Carefully pull the cover from the top panel and set it aside.

## Step 8 — Gears



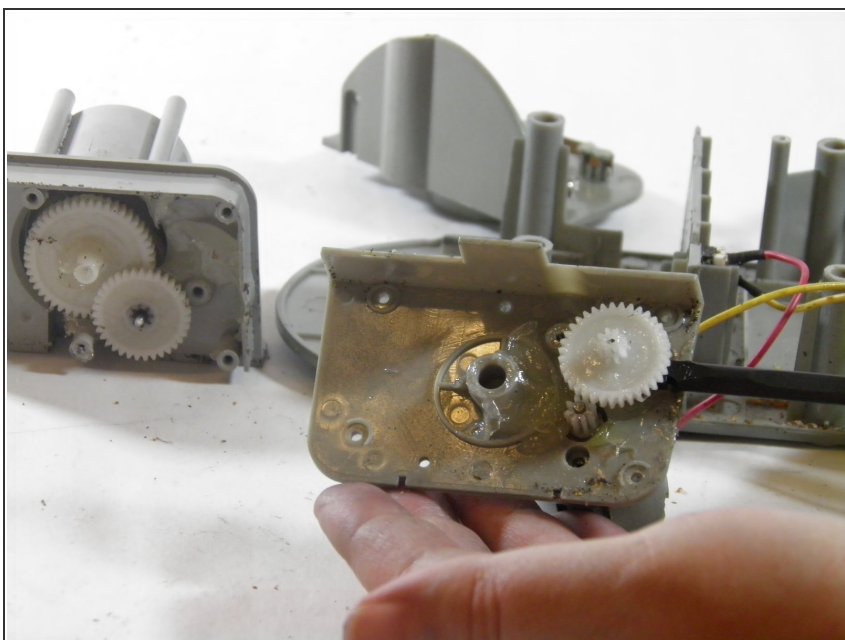
- Using a Philips 00 screwdriver, remove the six 9.87mm screws securing the gear housing.

## Step 9



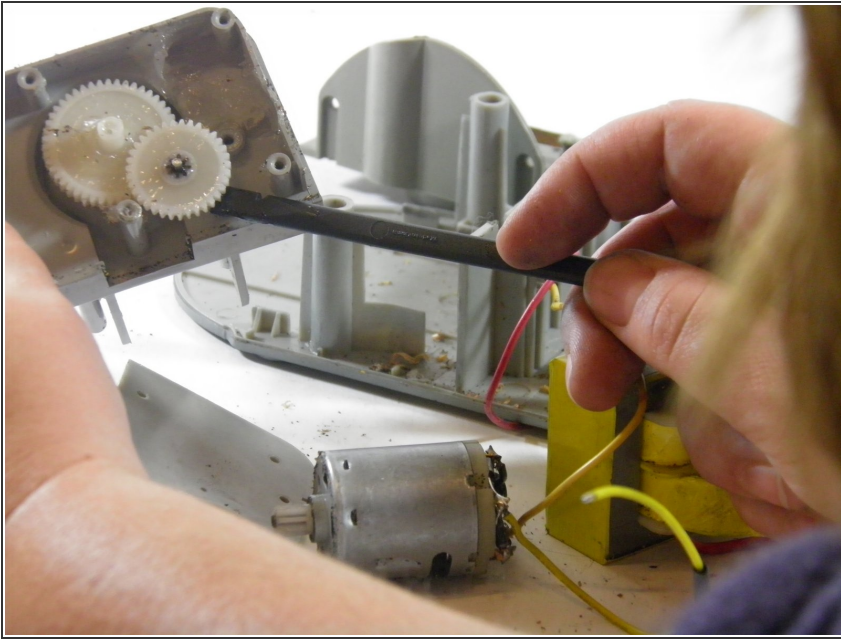
- Carefully pull apart the gear housing's panels.
- ⓘ The gears are lubricated by petroleum jelly.

## Step 10



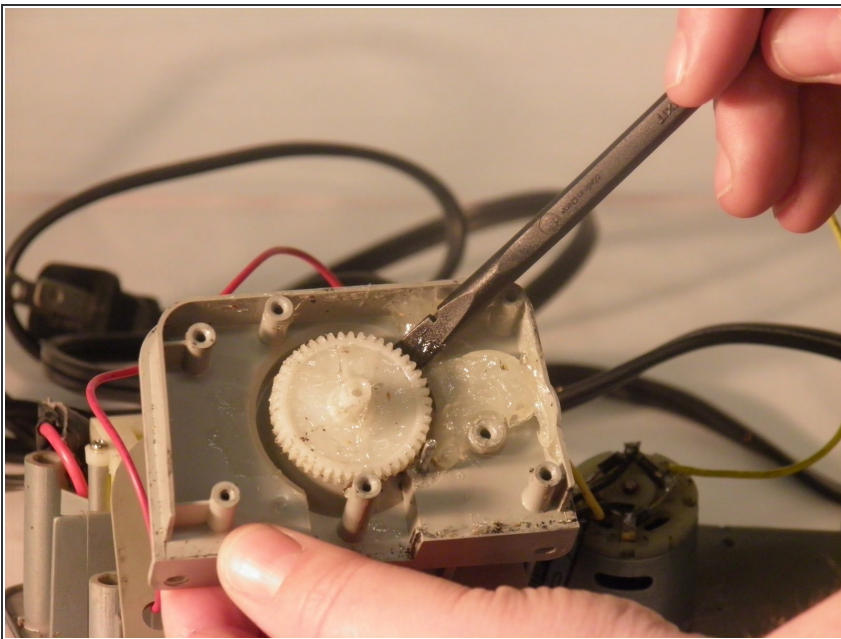
- Gently pry the first gear out of the gear housing with a spudger.
- ★ To ease reassembly, note the orientation of the gear as you pry it free.

## Step 11



- Gently pry the second gear out of the gear housing with a spudger.
- ☑ To ease reassembly, note the orientation of the gear before you pry it free.

## Step 12



- Gently pry the third gear out of the housing with a spudger.
- ☑ To ease reassembly, note the orientation of the gear as you pry it free.

To reassemble your device, follow these instructions in reverse order.