



Brother PT-1290 Face Plate Replacement

In this guide, you will see how to fix your...

Written By: Lorraine Canez



INTRODUCTION

In this guide, you will see how to fix your broken/damaged face plate on your Brother PT-1290.

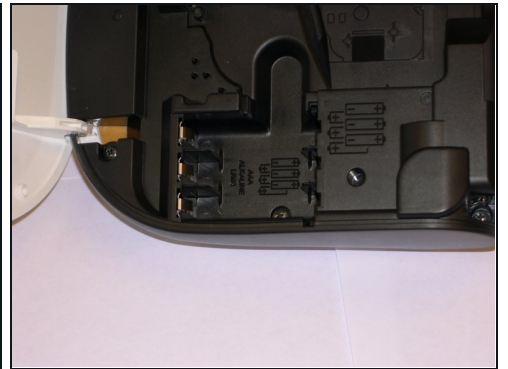
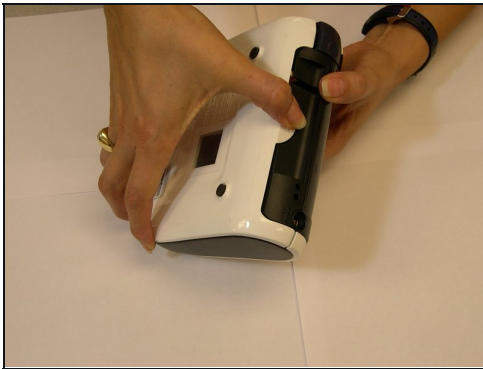
TOOLS:

Phillips #00 Screwdriver (1)

iFixit Opening Tool (1)

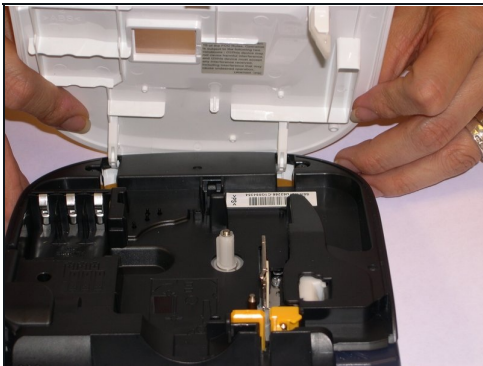
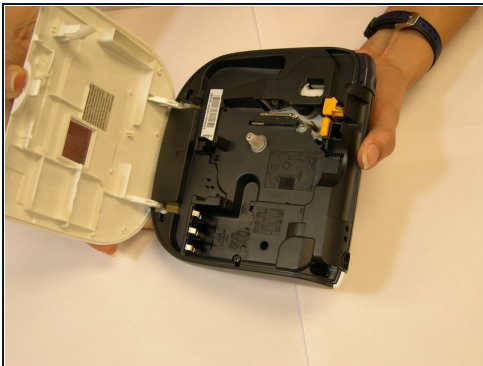
Spudger (1)

Step 1 — Turn over device to remove batteries.



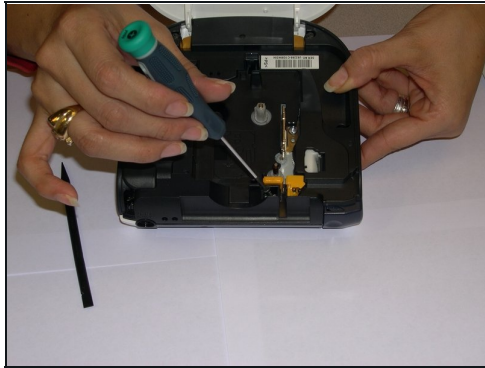
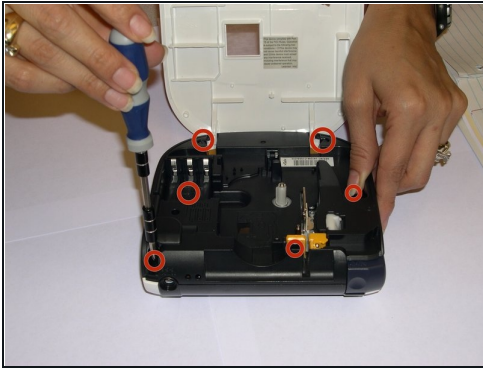
- Turn the device to it's side toward the bottom of the keyboard. Then pop open the case and remove the batteries.

Step 2 — Back of device



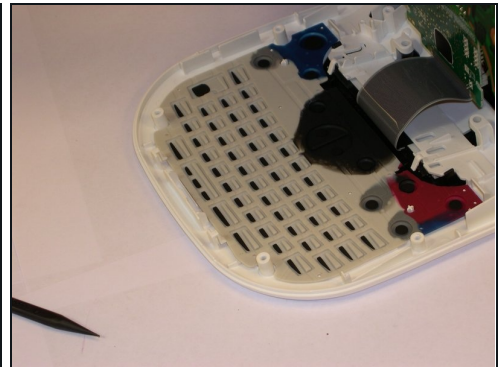
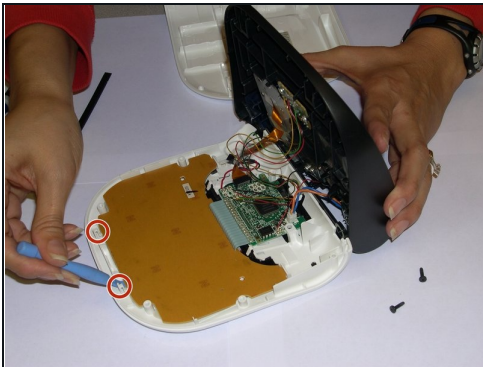
- Remove back of device and set aside.

Step 3 — Remove screws



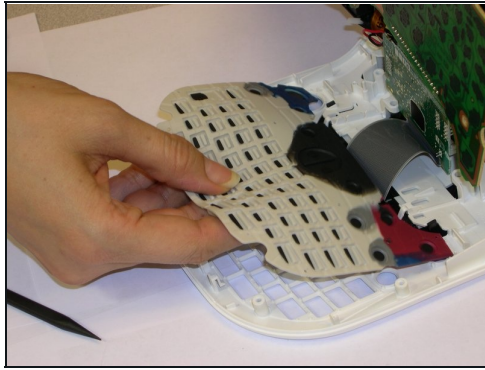
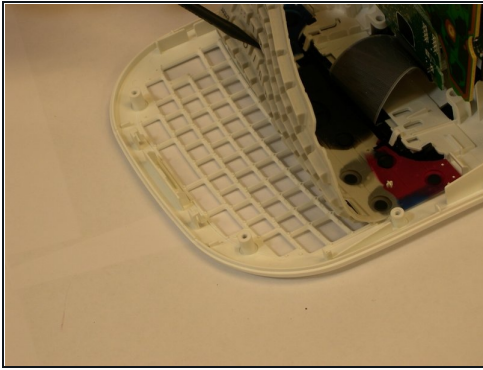
- Remove all 1/4 inch screws(6 total) with a (+PH00) screwdriver. Open slowly not to damage the display data cable.

Step 4 — Remove flat panel



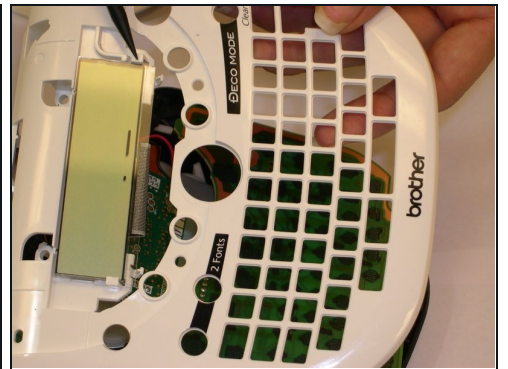
- Use a plastic opening tool to remove the flat-panel membrane keyboard. Lift up and set aside.

Step 5 — Remove



- Use a spudger to aid in removing the keyboard.
- Gently lift out while removing the LCD screen that is connected to the data cable and finishing removing.

Step 6 — Removing the LCD screen.



- Now that you have removed your keyboard. Turn the device over carefully.
- Pop of LCD black cover.
- Use the spudger to gently press out the LCD screen.

Step 7 — Switching out faceplate.



- Change out old damaged face plate with your new face plate.

To reassemble your device, follow these instructions in reverse order.