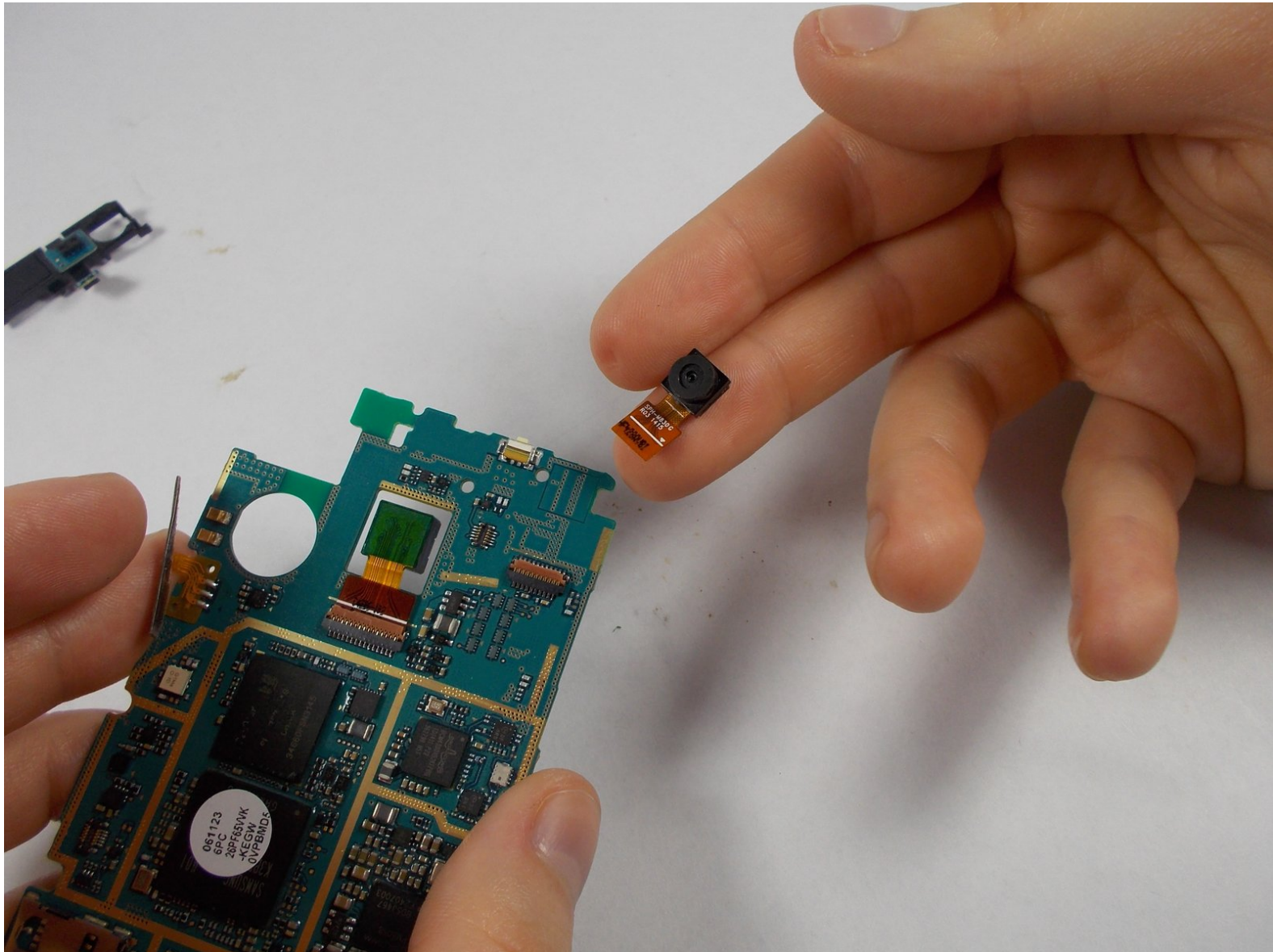




Samsung Galaxy Rush Front Camera Replacement

This guide will illustrate how to replace the front camera.

Written By: Matthew



INTRODUCTION

This guide will illustrate how to replace the front camera.

TOOLS:

- [Phillips #0 Screwdriver](#) (1)
 - [iFixit Opening Tools](#) (1)
-

Step 1 — Front Camera



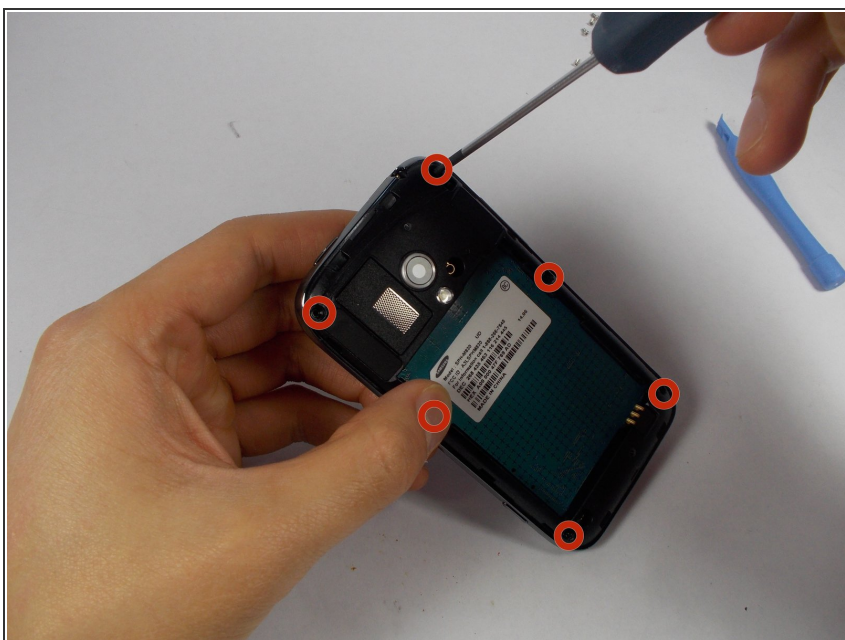
- Looking at the back of your phone, use your finger to remove back cover.

Step 2



- Remove the battery,

Step 3



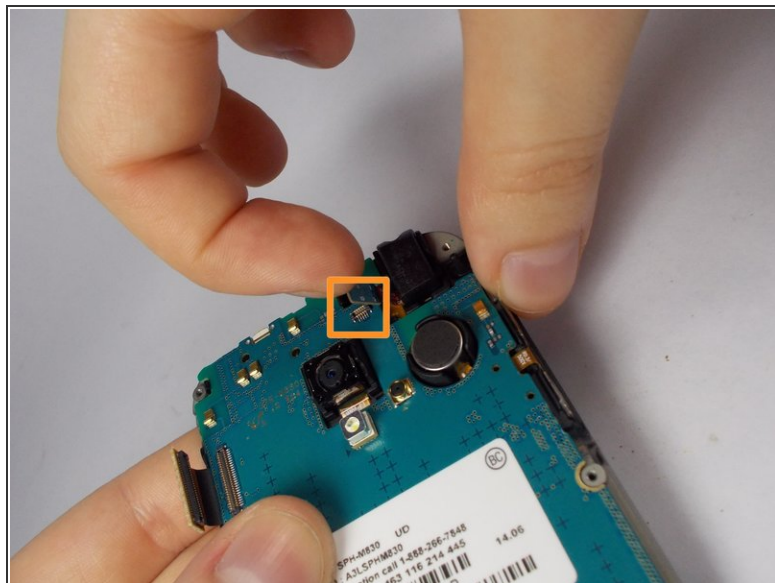
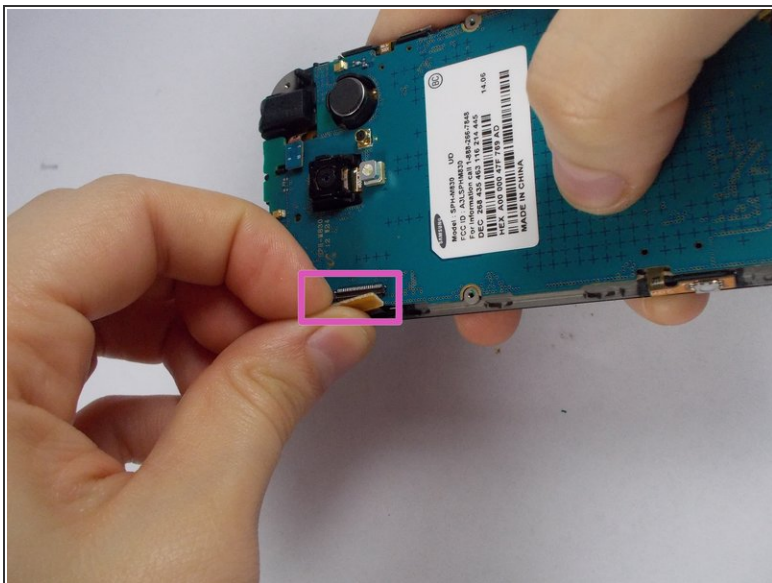
- With a small phillips-head screw driver, remove the six screws holding the back panel in place.

Step 4



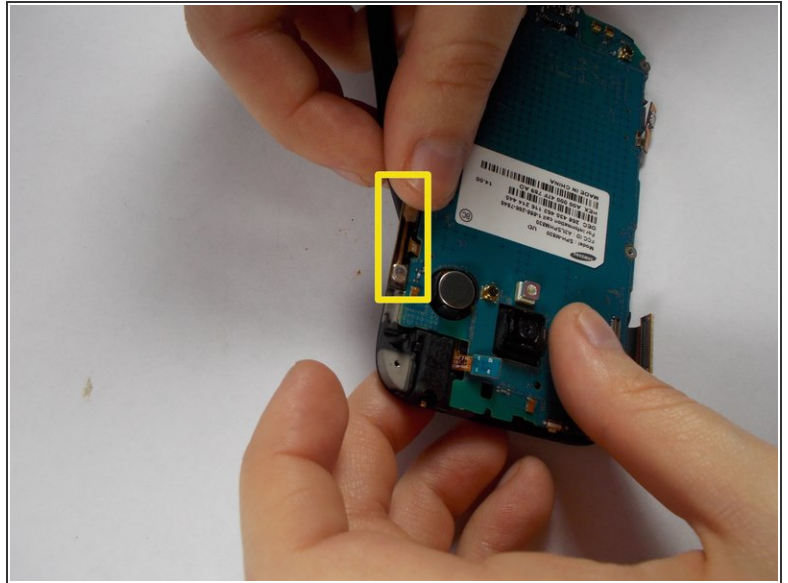
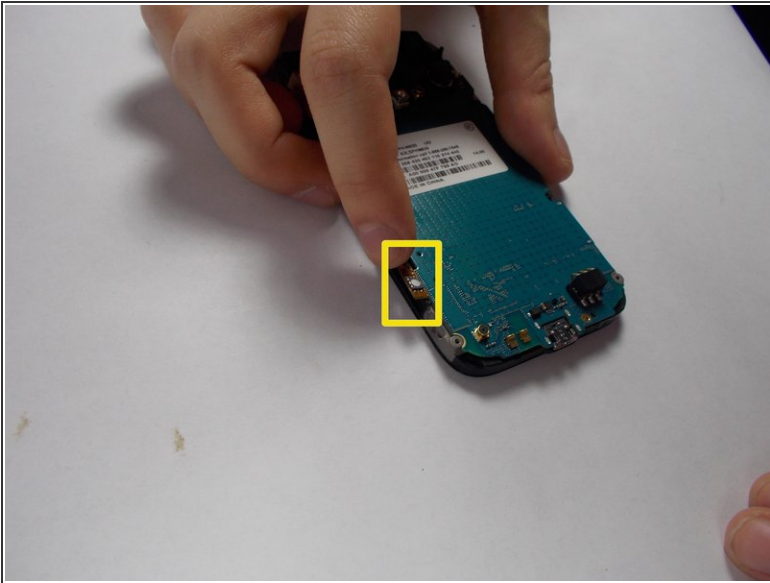
- Use the pry tool to pry the back panel from the rest of the phone. Pry from the edge closest to the screen for simplicity.

Step 5



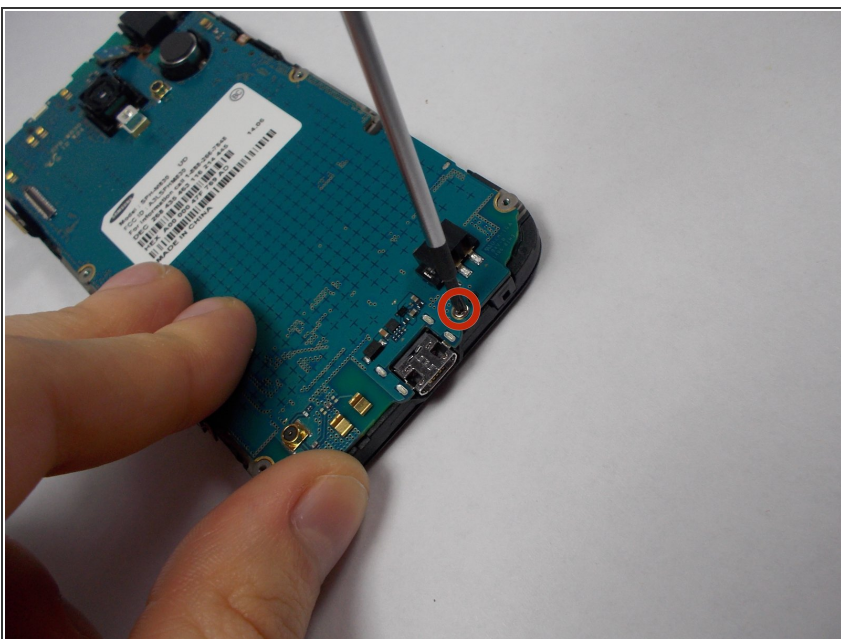
- Using tweezers, gently lift connectors from motherboard.
- A connector will be on the upper left
- The second connector is located towards the top of the phone. Above the camera. It comes off with ease.

Step 6



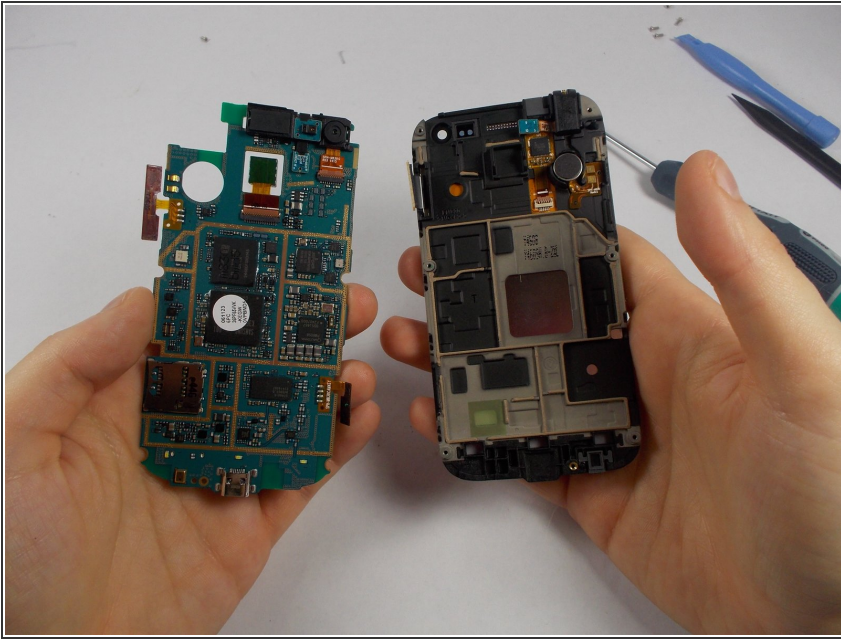
- Use the tweezers to carefully remove the 2 adhesive orange ribbons.
- These stay attached to the motherboard so be careful not to break them.
- They are on the side of the phone.

Step 7



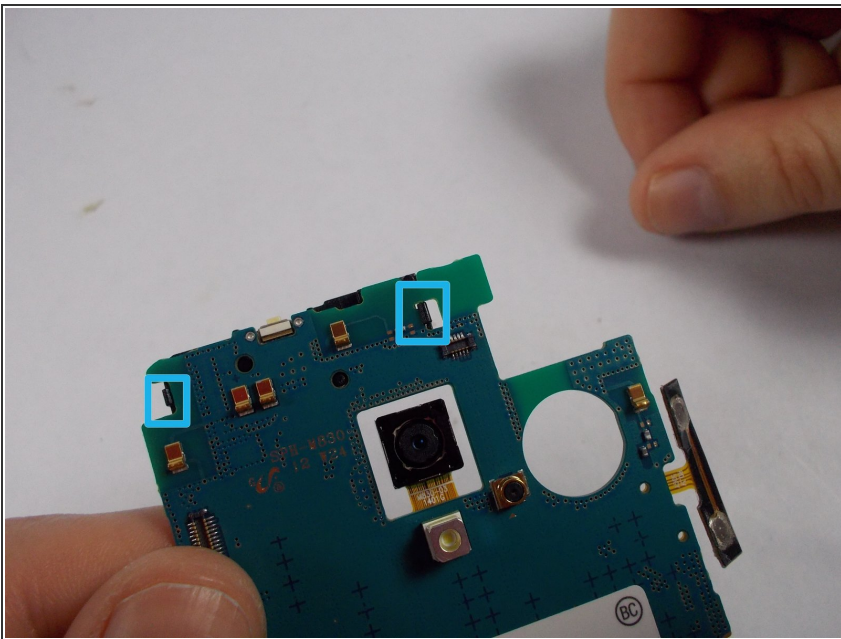
- Use a philips-head screwdriver to remove the single screw on the bottom of the phone. Located to the right of the charging port.

Step 8



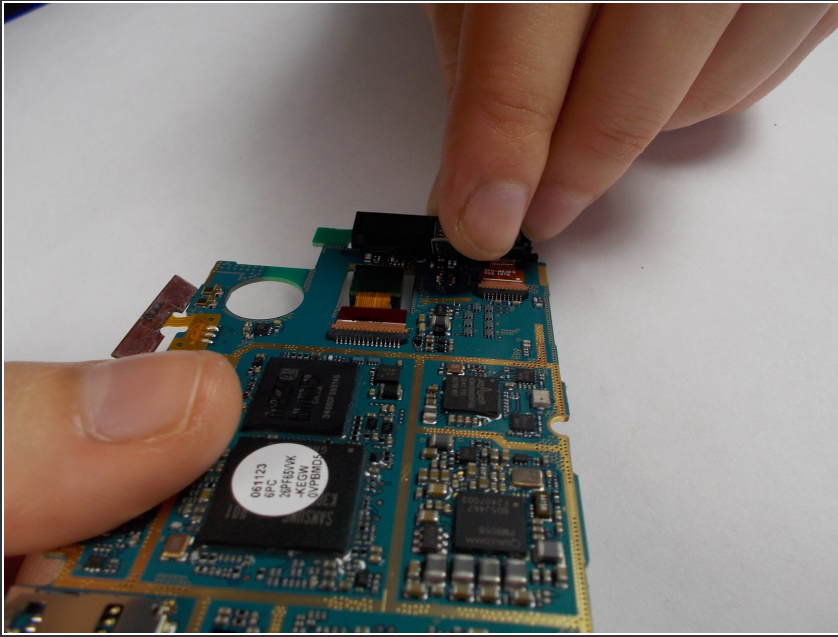
- Lift the motherboard upwards separating it from your screen.

Step 9



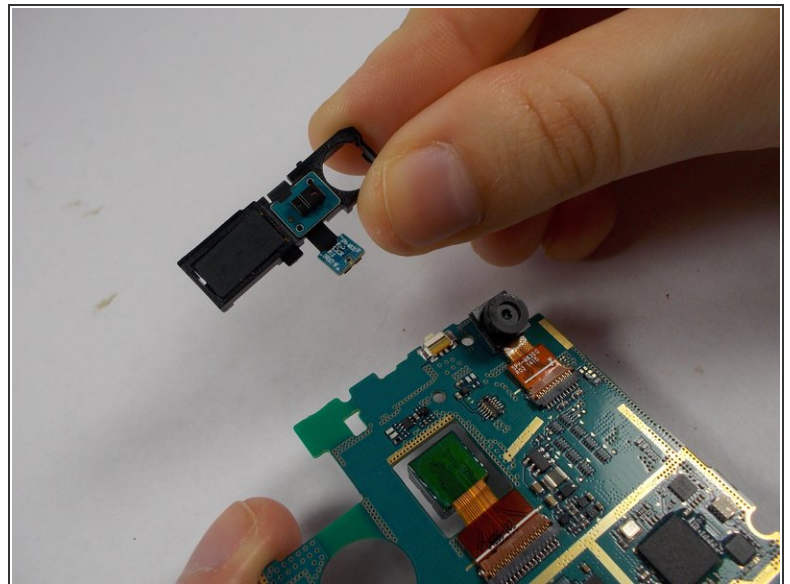
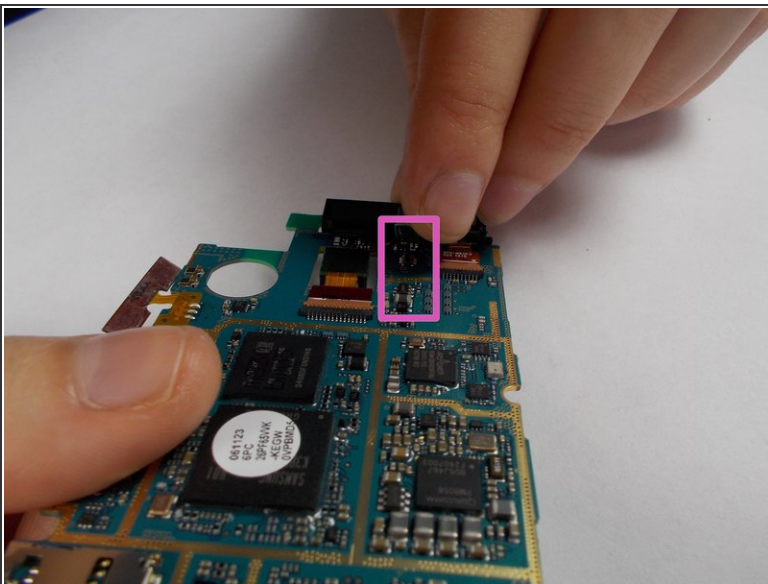
- Hold motherboard so that the circuits face away from you
- Pop off the two black tabs on the upper most part of the motherboard.

Step 10



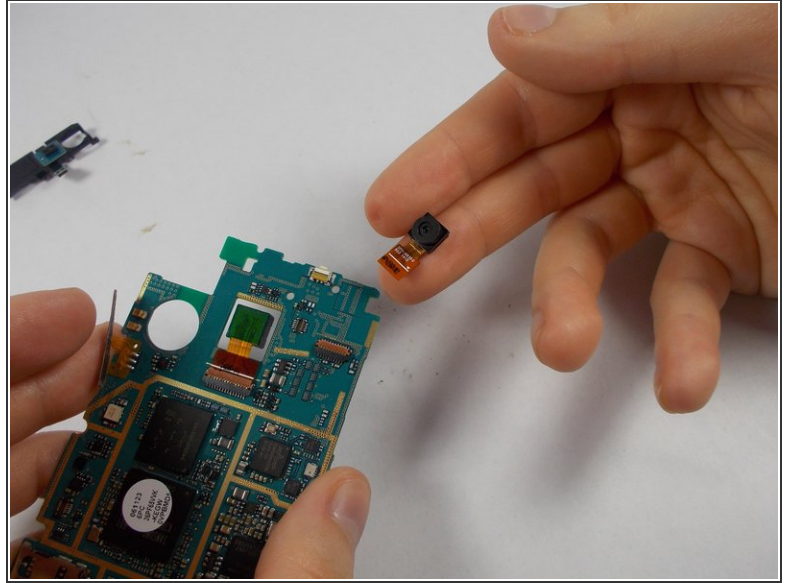
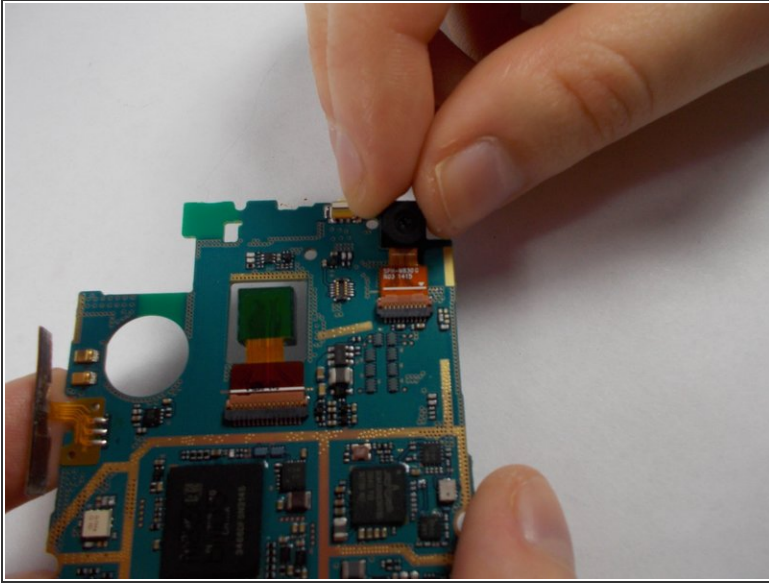
- Flip the motherboard over so that the circuits are now facing your direction.

Step 11



- Lift and remove the connecting tab

Step 12



- Gently take the front camera with two fingers and pull upwards. A wiggle may help.

To reassemble your device, follow these instructions in reverse order.