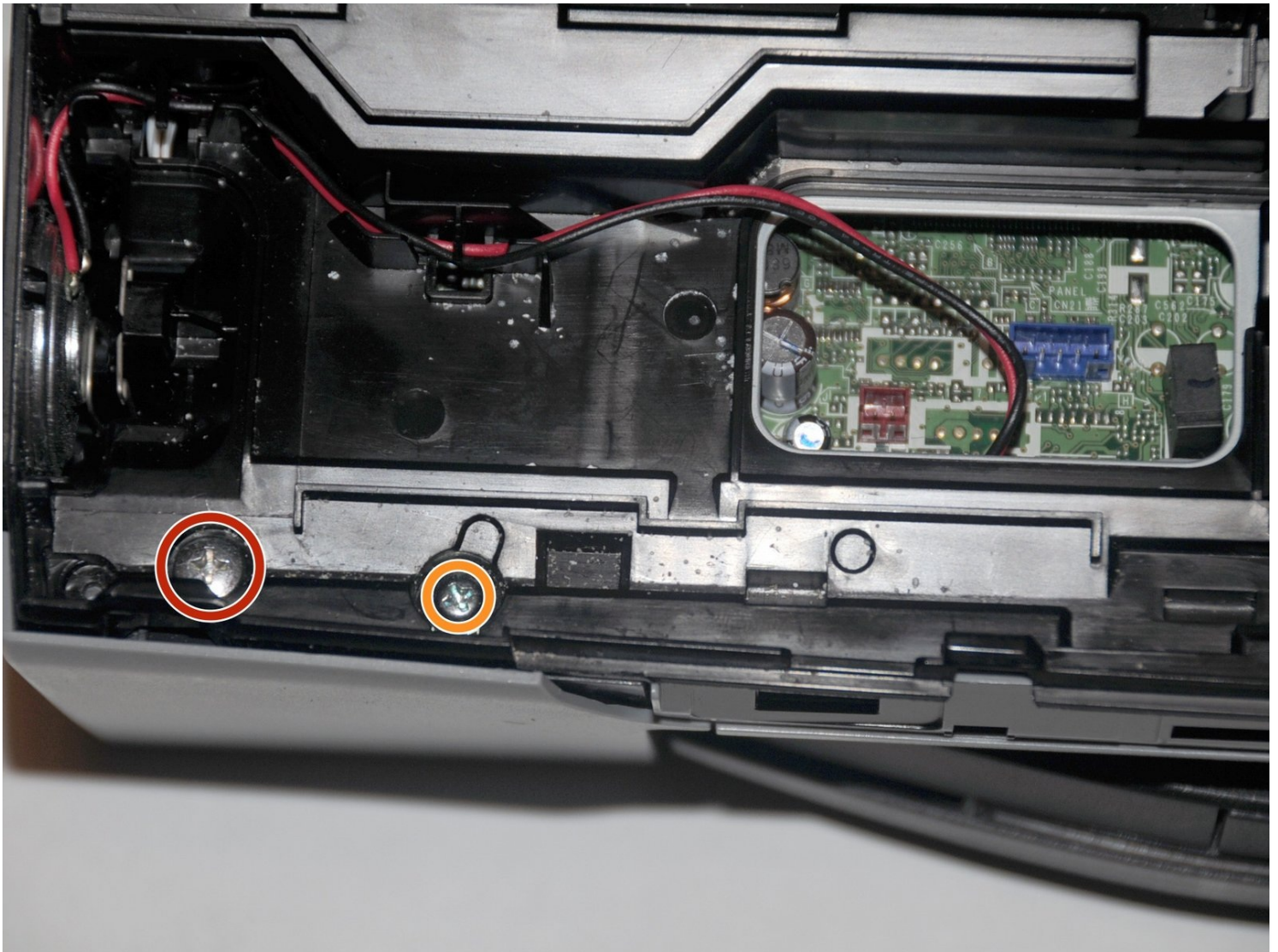




Brother MFC-490CW Wireless module Replacement

Before you begin, make absolutely sure that you...

Written By: Matt



INTRODUCTION

Before you begin, make absolutely sure that you need to actually replace this module. [Here are some solutions to common wireless networking problems](#)

If all else fails, continue with this guide.

TOOLS:

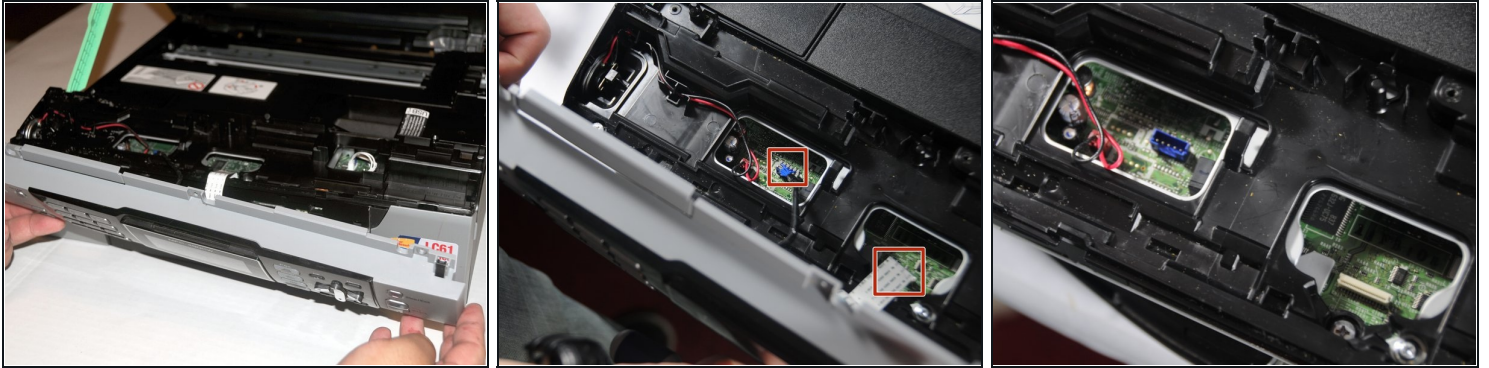
[Phillips #2 Screwdriver](#) (1)

Step 1 — Remove screws holding the front panel



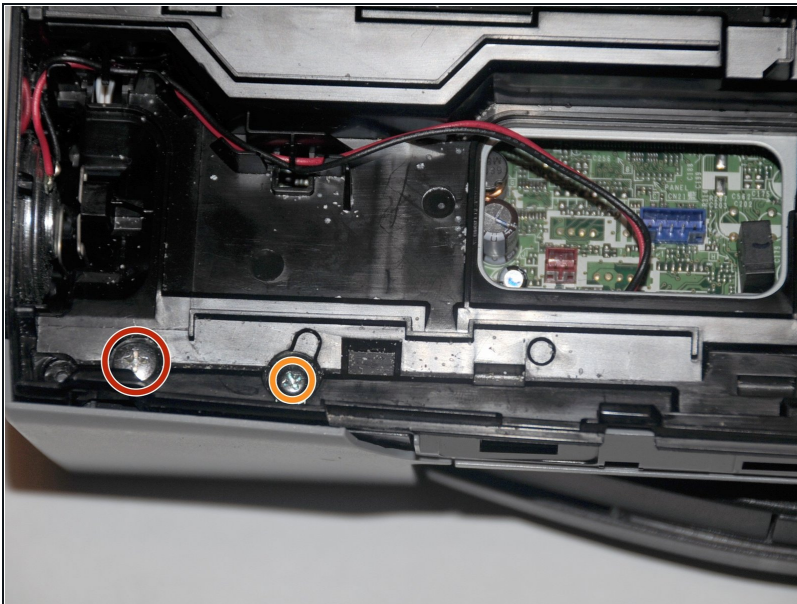
- Use a Phillips #2 screwdriver to remove the three 12.1 mm screws holding the control panel in place.

Step 2 — Unplug the panel from the rest of the printer



- Lift up the front panel from the device.
- Gently lift up and disconnect the data cables that attach the panel to the printer.

Step 3 — Remove the screw



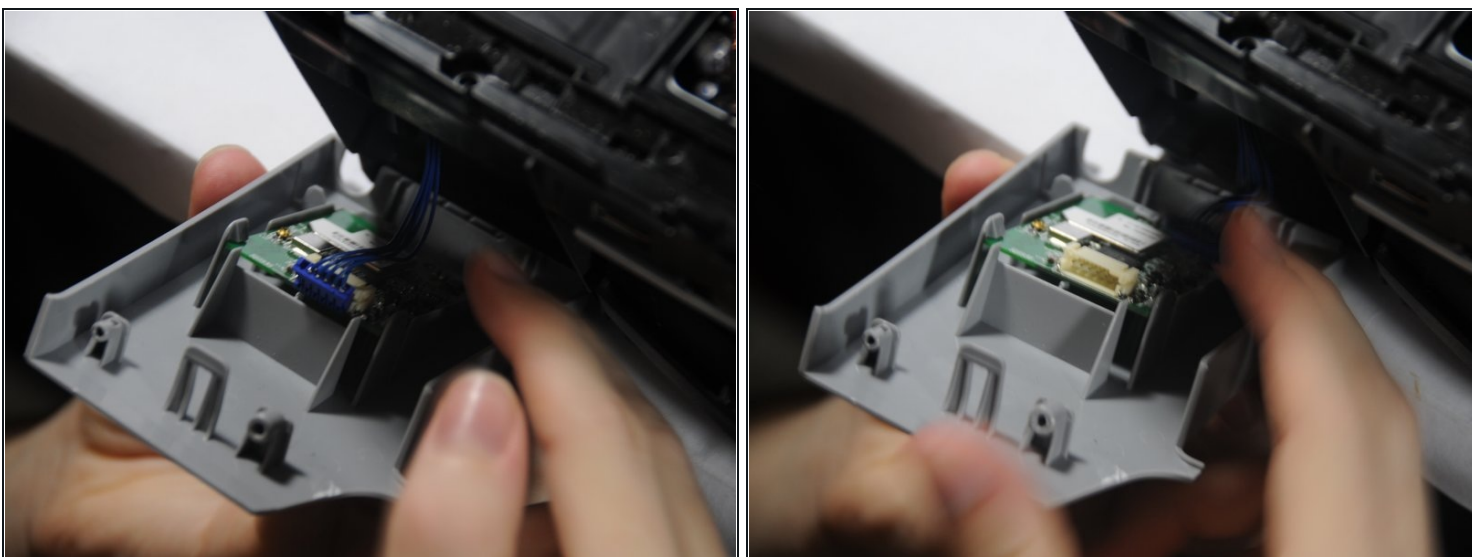
- Unscrew the 14.1mm screw located at the left side of the device.
- Unscrew the 12.1mm screw to the right of the 14.1mm screw.

Step 4



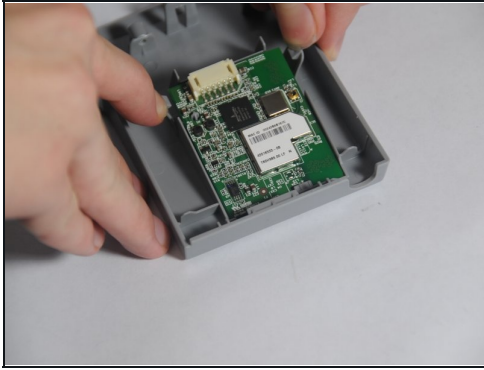
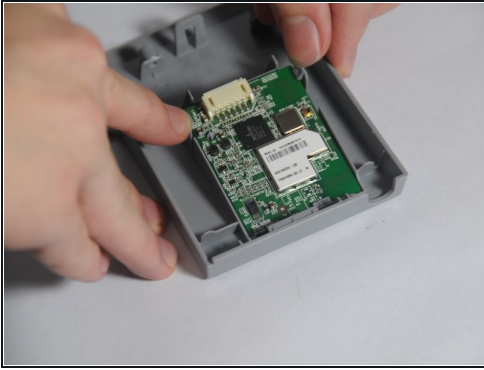
- Pry open the left front panel away from the printer
- ⓘ Be careful. The panel is attached with a data cable.

Step 5



- Carefully unplug the connector attached to the device.

Step 6 — Remove the module from the panel



- Separate the two clips that hold the module in place.
 - Lift up the module.
-

To reassemble your wireless module, follow these instructions in reverse order.