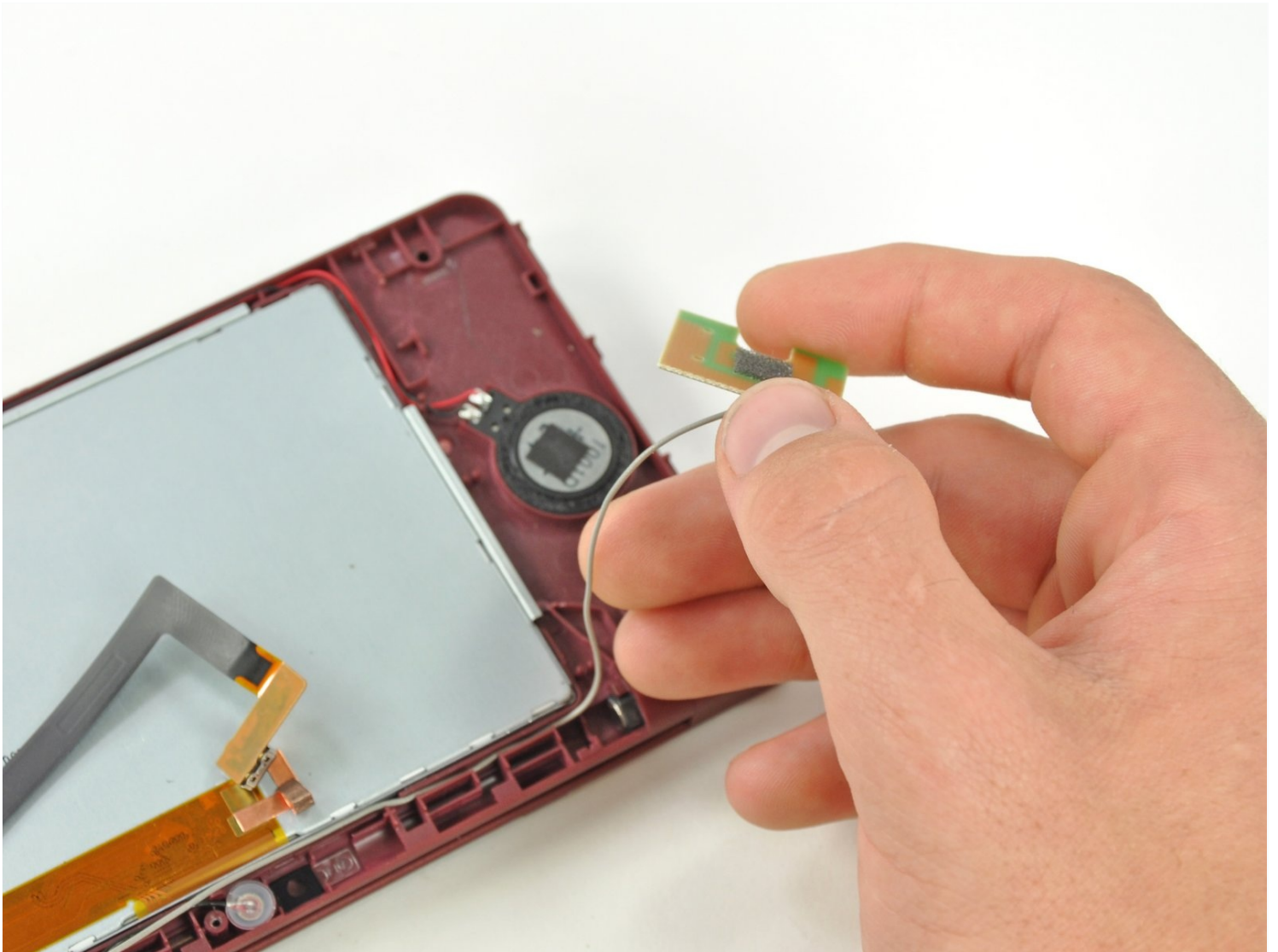




# Nintendo DSi XL Wi-Fi Antenna Replacement

Written By: Brett Hartt



## PARTS:

### Nintendo DSi XL Wi-Fi Antenna (1)

#### Step 1 — Battery



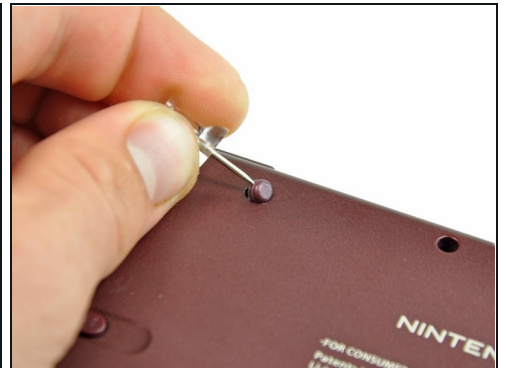
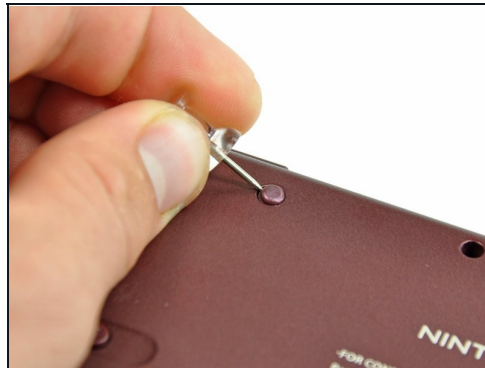
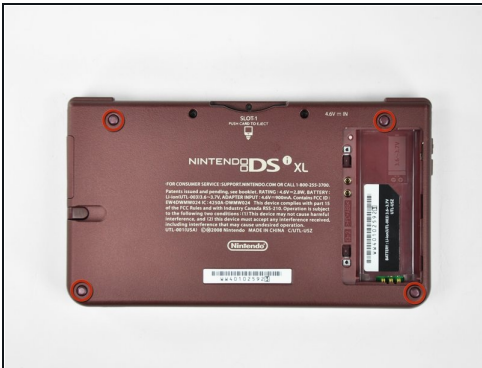
- Remove the two Phillips screws securing the battery cover to the back of the handheld console.
- Lift the battery cover off the back of the DSi XL.

#### Step 2



- Lift the battery from the DSi XL.

### Step 3 — Lower Case



- Remove the four rubber screw covers on the lower case by prying them up with a push pin.

### Step 4



- Remove the following seven Phillips screws that secure the lower case to the rest of the DSi XL:
  - Four silver 5.3 mm screws
  - Two black 5.3 mm screws
  - One black 2.5 mm screw

## Step 5



① Turn the DSi XL over, and open the display.

- Insert a spudger between the upper and lower case at the bottom left corner of the DSi.
- Slide the spudger along the bottom edge of the upper case to release the latches securing the upper case to the lower case.



## Step 6

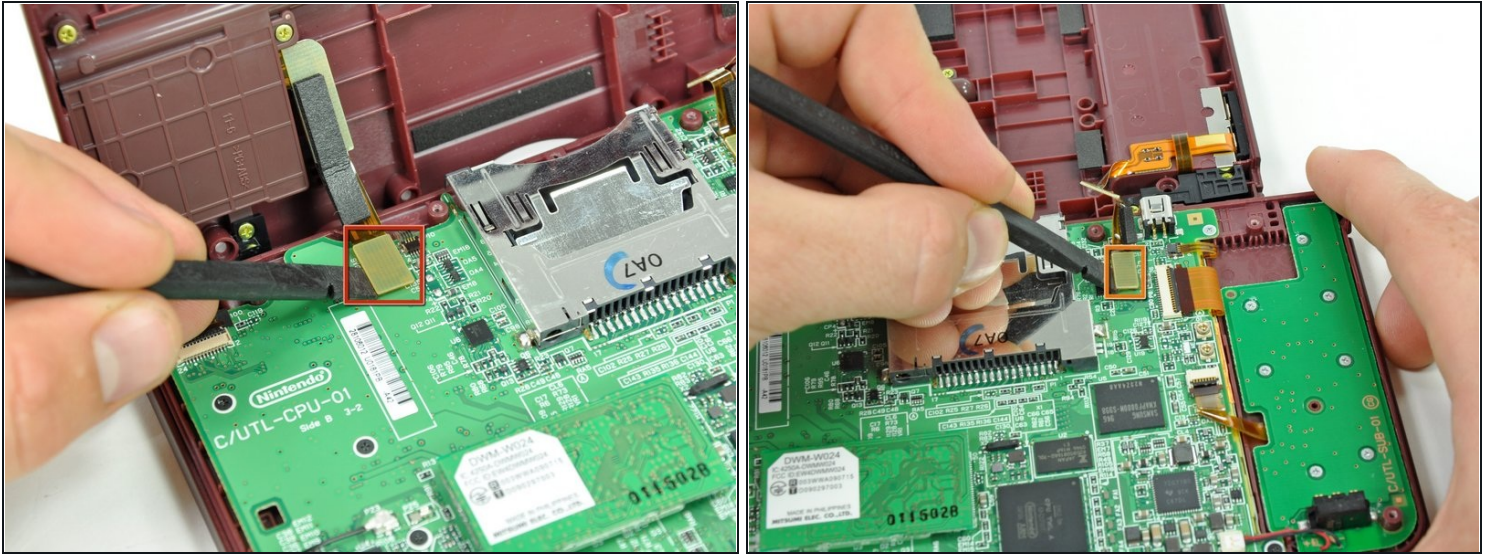


① Close the display and turn the DSi XL over.

- Lift the lower case from the front edge.
- Rotate the lower case away from the DSi.

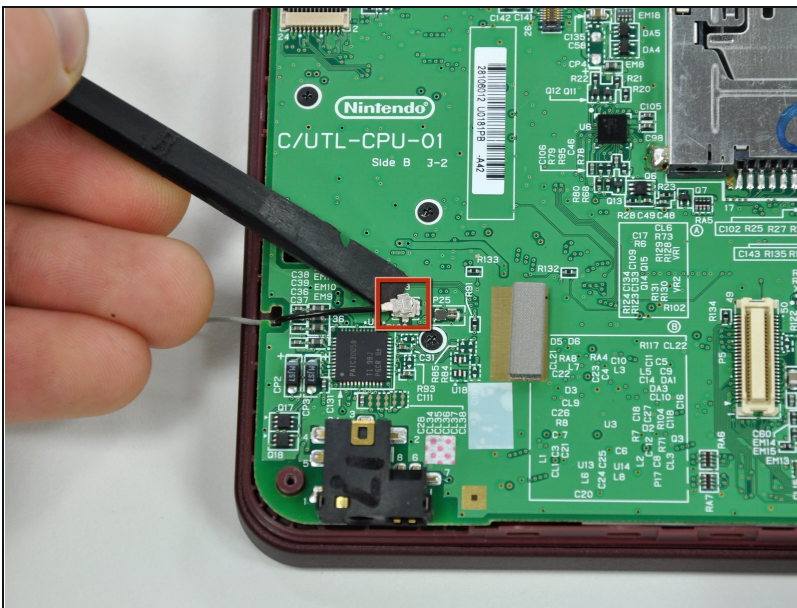
① The lower case cannot be completely removed yet, since it is still connected to the motherboard.

## Step 7



- Using a spudger, pry the SD card/right shoulder button connector off its socket.
- Pry the volume button/left shoulder button connector off its socket on the motherboard with a spudger.

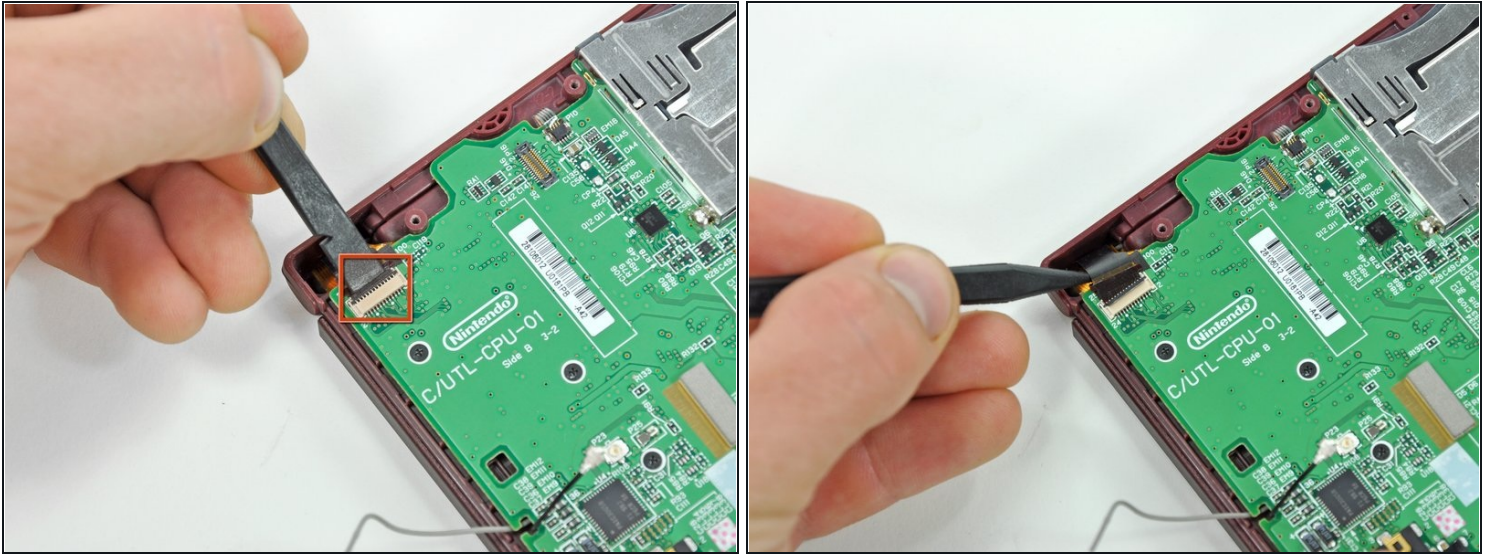
## Step 8 — Motherboard



- Use a spudger to pry the microphone cable off the motherboard.
- ① Pry from underneath the cable.

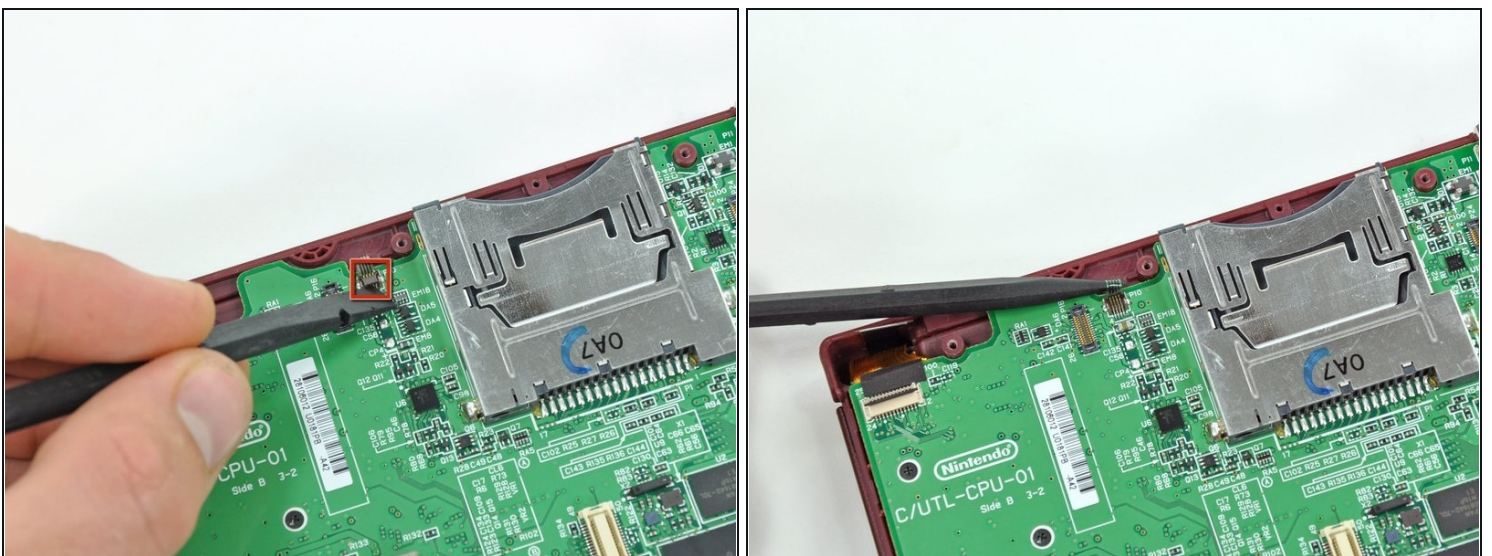


## Step 9



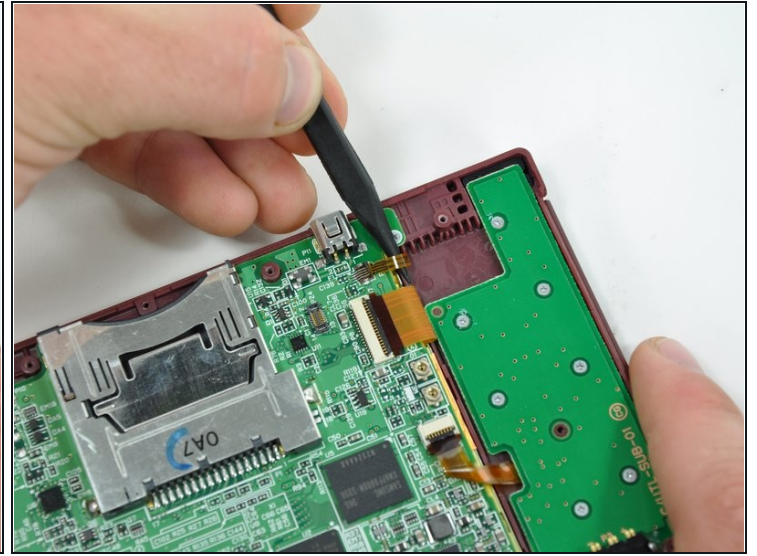
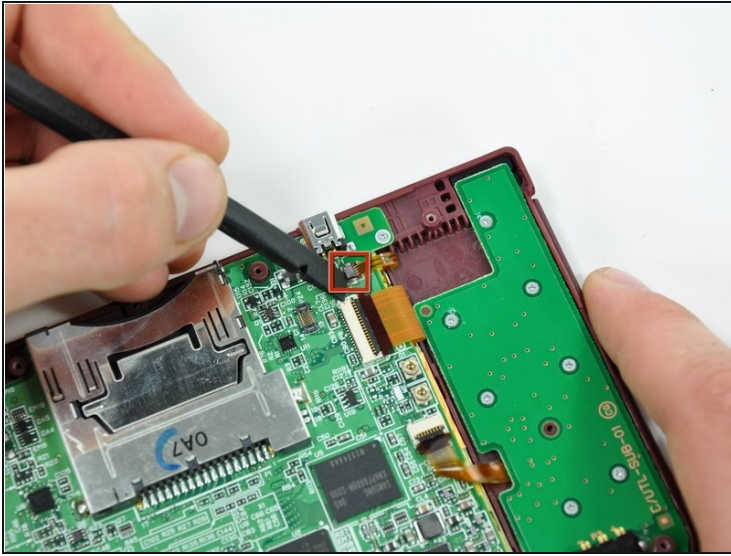
- Using the flat end of a spudger, flip up the retaining flap on the camera ribbon ZIF connector.
- Use the pointed end of a spudger to pull the camera ribbon from the ZIF connector.

## Step 10



- Using the flat end of a spudger, flip up the retaining flap on the touchscreen cable ZIF connector.
- With the pointed end of the spudger, pull the touchscreen cable from its connector on the motherboard.

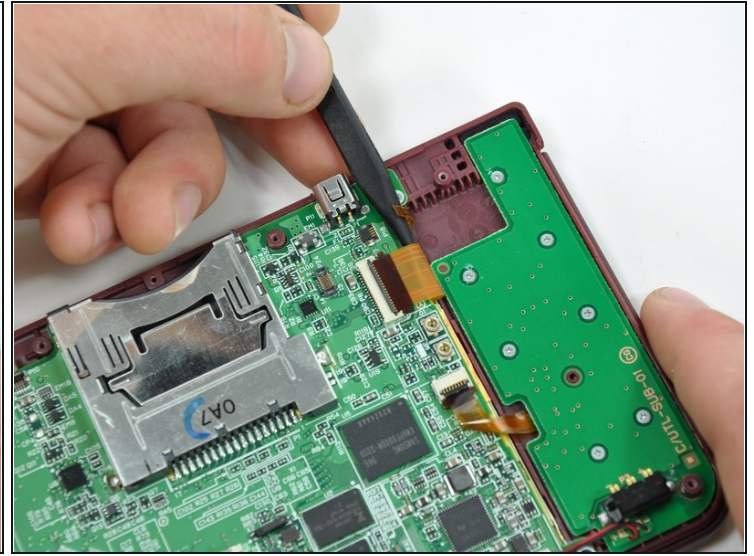
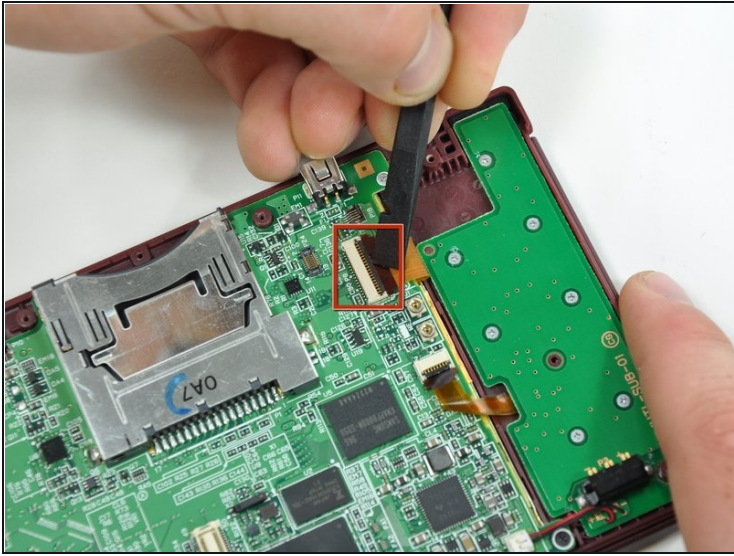
## Step 11



- Using the flat end of a spudger, flip up the retaining flap on the backlight cable ZIF connector.
- With the pointed end of the spudger, pull the backlight cable from its connector on the motherboard.

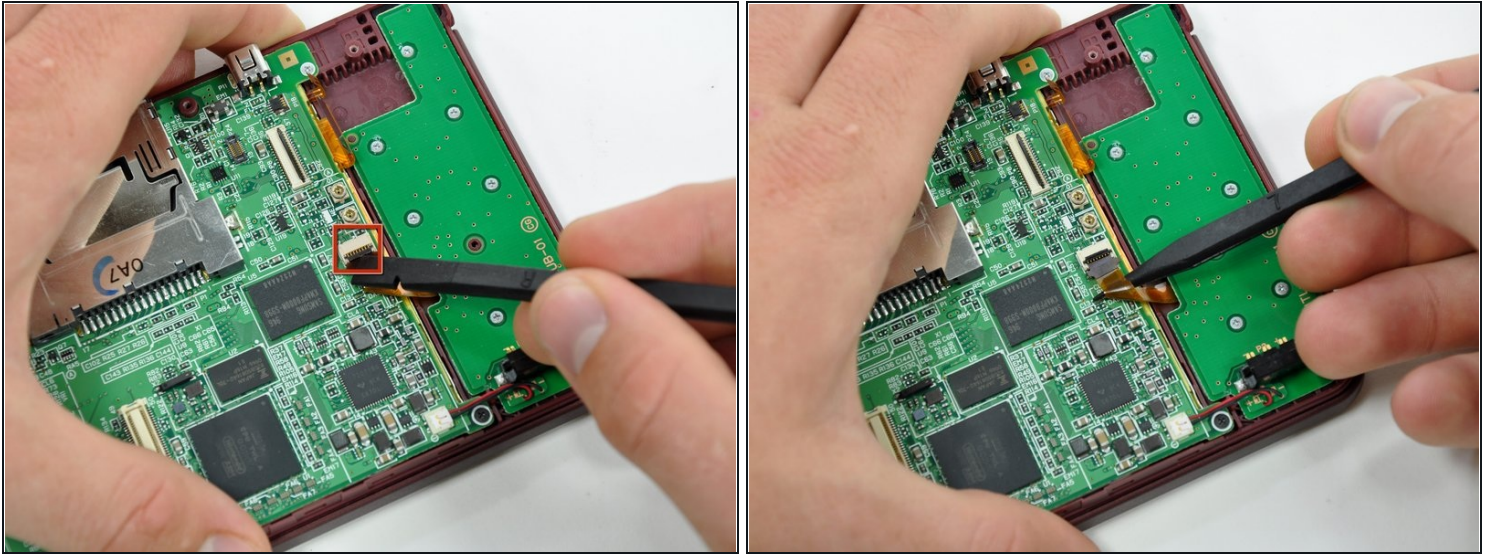


## Step 12



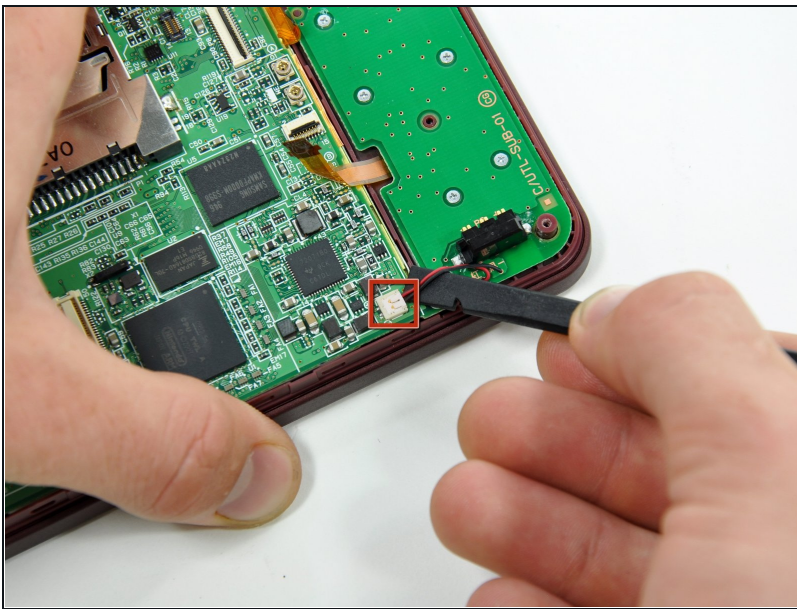
- Using the flat end of a spudger, flip up the retaining flap on the lower display data cable ZIF connector.
- With the pointed end of the spudger, pull the lower display data cable from its connector on the motherboard.

## Step 13



- Using the flat end of a spudger, flip up the retaining flap on the ZIF connector for the D-Pad/power button cable.
- With the pointed end of the spudger, pull the D-Pad/power button cable from its connector on the motherboard.

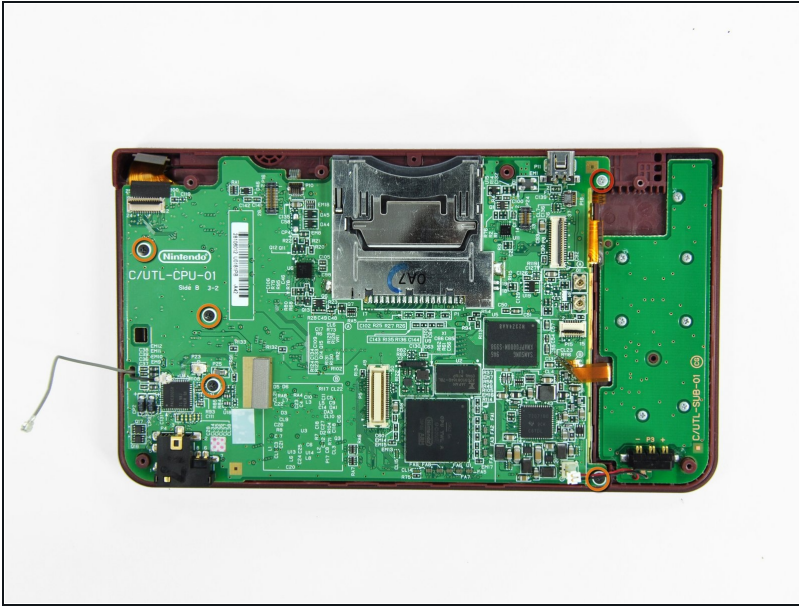
## Step 14



- Using the flat end of the spudger, pry the battery cable up off its socket on the motherboard.



## Step 15



- Remove the screws securing the motherboard to the upper case:
  - A single 2.5 mm silver Phillips screw
  - Four 3.7 mm black Phillips screws

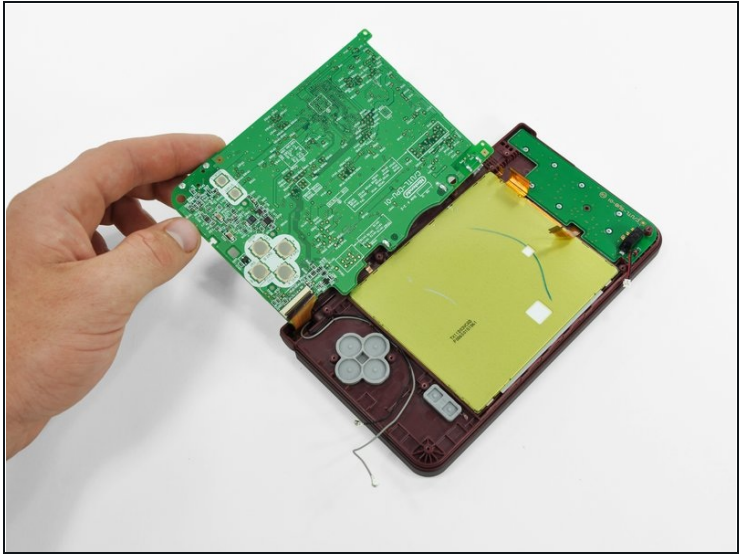
## Step 16



- Deroute the microphone and antenna cables through the slot in the motherboard.

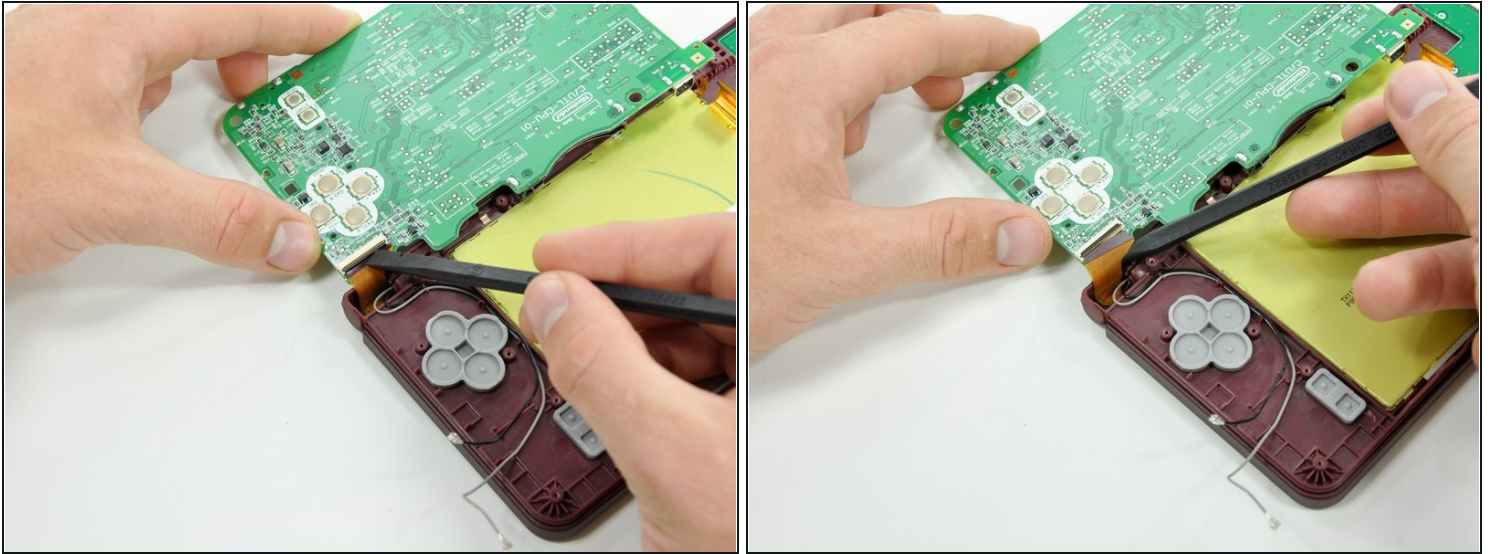


## Step 17



- Rotate the motherboard off the lower case.
- ① The motherboard cannot be completely removed yet. It is still attached by the upper LCD's display data ribbon cable.

## Step 18



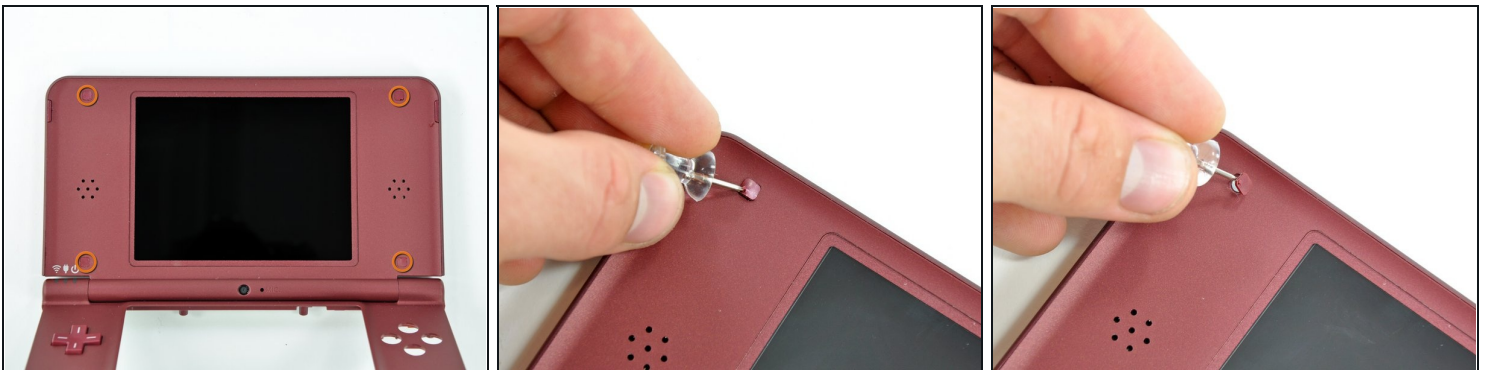
- Using the flat end of a spudger, flip up the retaining flap on the upper display data cable ZIF connector.
  - With the pointed end of the spudger, pull the upper display data cable from its connector on the underside of the motherboard.
- ① The motherboard is now free from the upper case.

## Step 19 — Lower Display Assembly



- With the console still upside-down, open the DSi XL slightly.
- Push the lower display away from the upper case.
- Remove the lower display from the DSi XL.

## Step 20 — Rear Bezel



- Turn the DSi XL over and open the display.
- ☒ When re-assembling the device, be sure to re-install the ABXY and Start/Select buttons, as they are likely to fall out once the handheld console is turned over.
- Use a pushpin to remove the four plastic screw covers on the front bezel.



## Step 21



- Remove the four 3.5 mm silver Phillips screws securing the rear bezel to the front bezel.

## Step 22



- Using two hands, gently slide the rear bezel upwards.

ⓘ The rear bezel will move only about 2 mm.

## Step 23



- Insert a spudger into the gap between the front and rear bezel.
- Rotate the spudger away from the DSi XL, prying the two bezels apart.

## Step 24



- In the same manner as described above, continue prying along the top edge of the front and rear bezels.

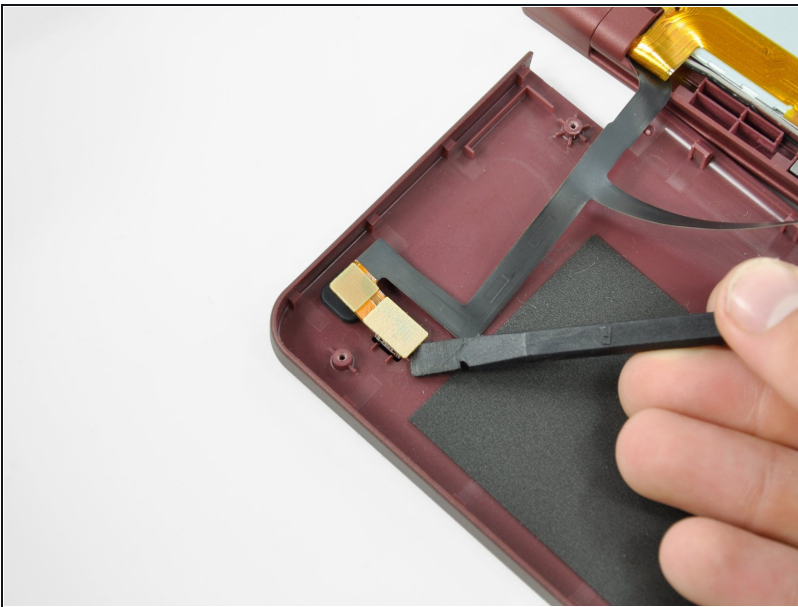
## Step 25



- Separate the rear bezel from the front bezel.

⚠ Do not attempt to completely remove the rear bezel yet. It is still attached to the front bezel by the rear-facing camera.

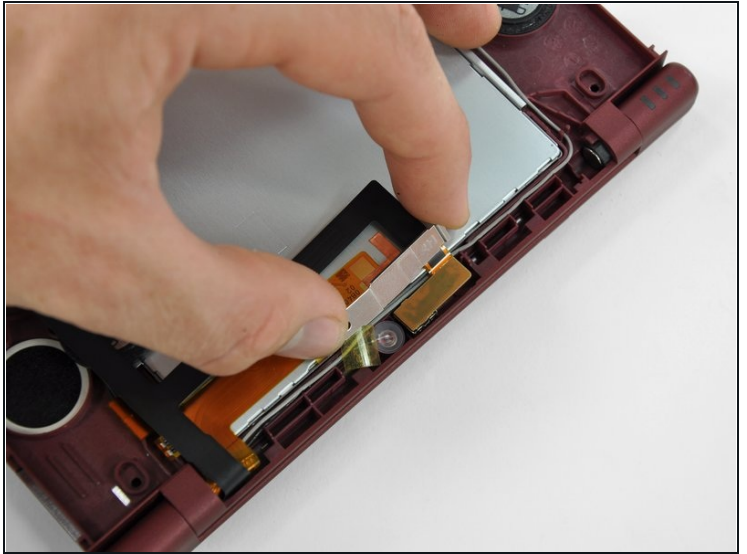
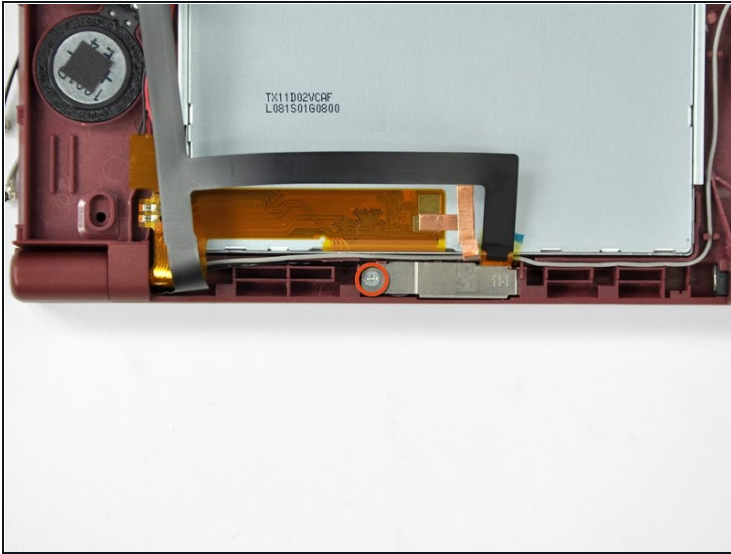
## Step 26



- Using the flat end of a spudger, pry the rear camera off the rear bezel.
- Remove the rear bezel.

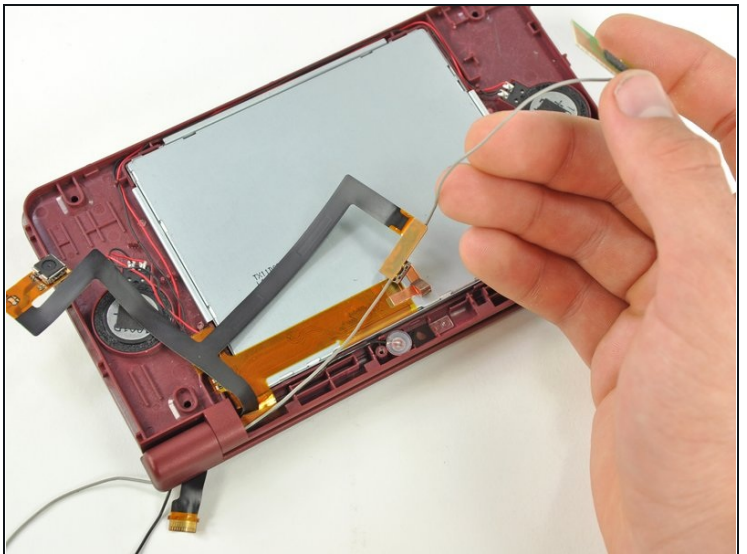
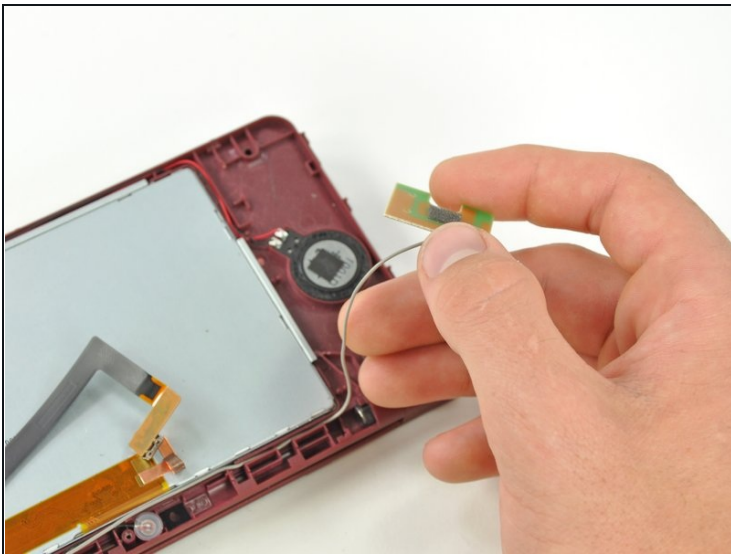


## Step 27 — Wi-Fi Antenna



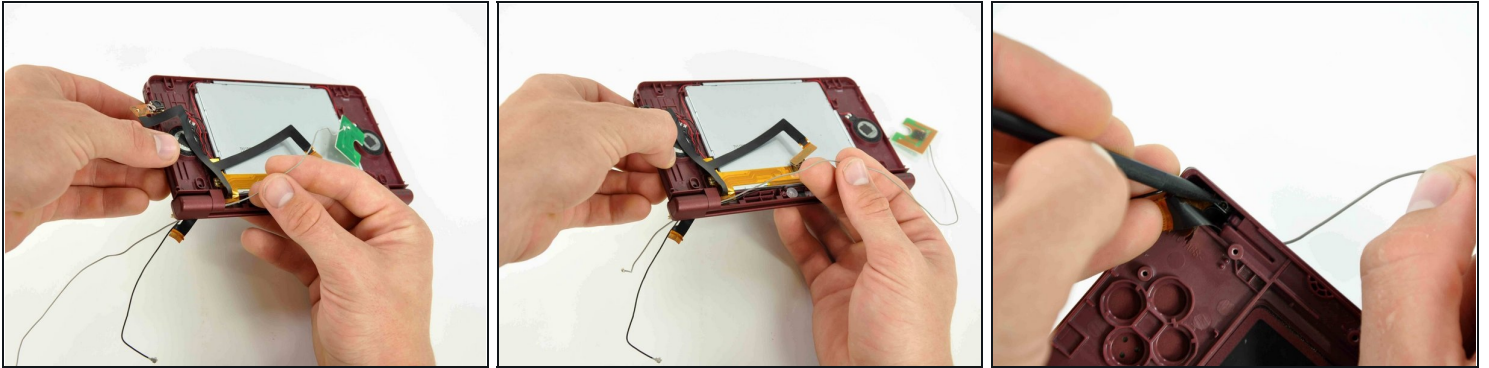
- Remove the Phillips screw holding the metal securing bracket in place.
- Lift the metal bracket off the camera.

## Step 28



- Lift the Wi-Fi antenna off the front display bezel.
- De-route the Wi-Fi antenna cable from its grooves at the bottom of the front display bezel.

## Step 29



- Pull the Wi-Fi antenna cable through the right hinge connecting the front bezel and upper case.
  - Use the pointed end of a spudger to guide the connector at the end of the Wi-Fi antenna cable through the hinge.
- ☒ To replace the antenna, use a pair of [tweezers](#) to guide the connector through the hinge.
- 

To reassemble your device, follow these instructions in reverse order.