



BlackBerry Pearl 8100 Disassembly

Written By: Justin



INTRODUCTION

This guide details the removal of the rear, bottom and side covers; the frame, motherboard and front cover; and the keypad and trackball of the BlackBerry Pearl 8100.



TOOLS:

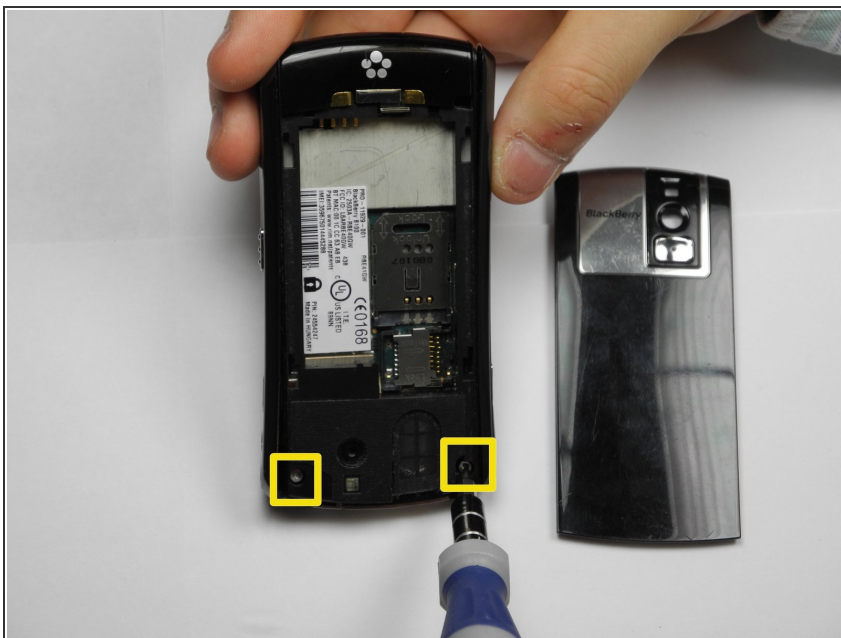
- [T6 Torx Screwdriver](#) (1)
 - [iFixit Opening Tools](#) (1)
-

Step 1 — Rear Cover



- Push the button indicated by the yellow marker to remove the rear cover.
- Remove the battery (not pictured).

Step 2 — Screws underneath the rear cover



- Use a T6 Torx screwdriver to remove the two screws indicated by the yellow markers.

Step 3 — Bottom Cover



- Use the plastic opening tool to loosen the bottom cover, and then remove the bottom cover from the cellphone.

Step 4 — Side Cover

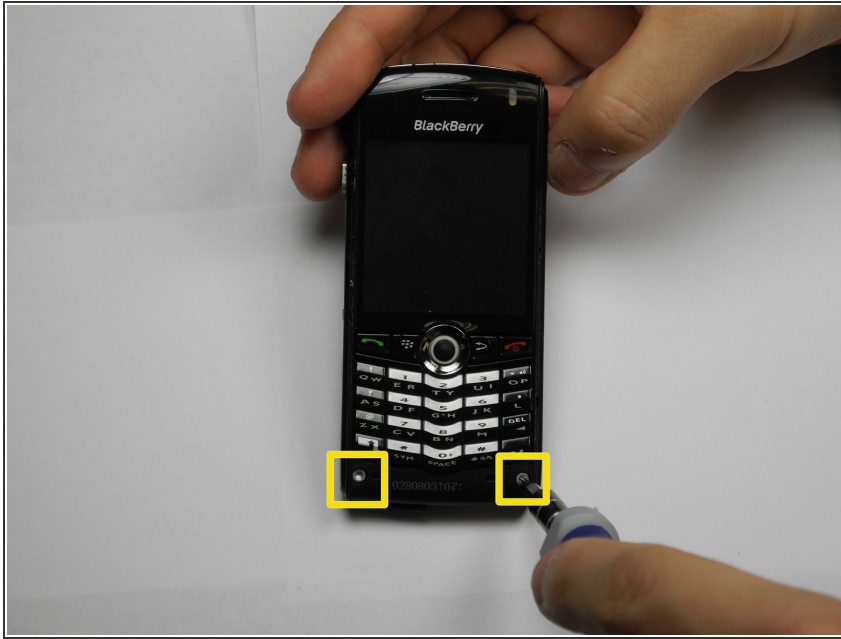


- Use the plastic opening tool to remove the side covers.



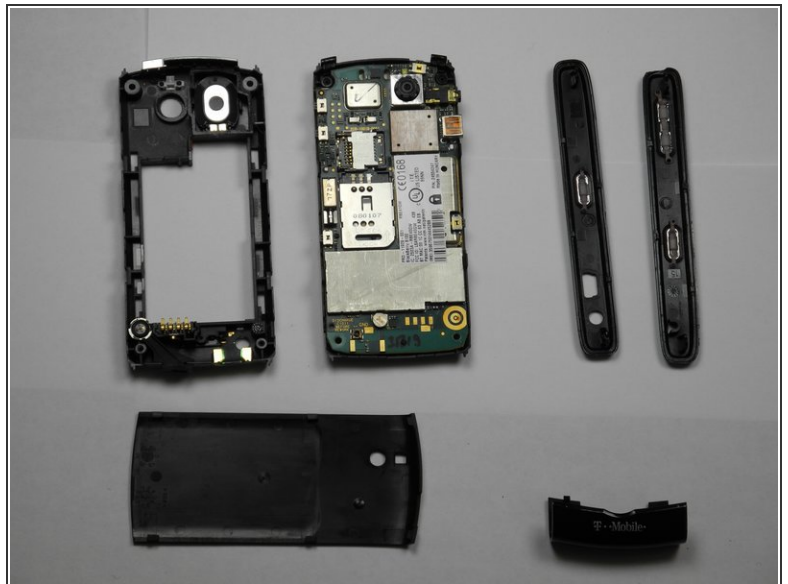
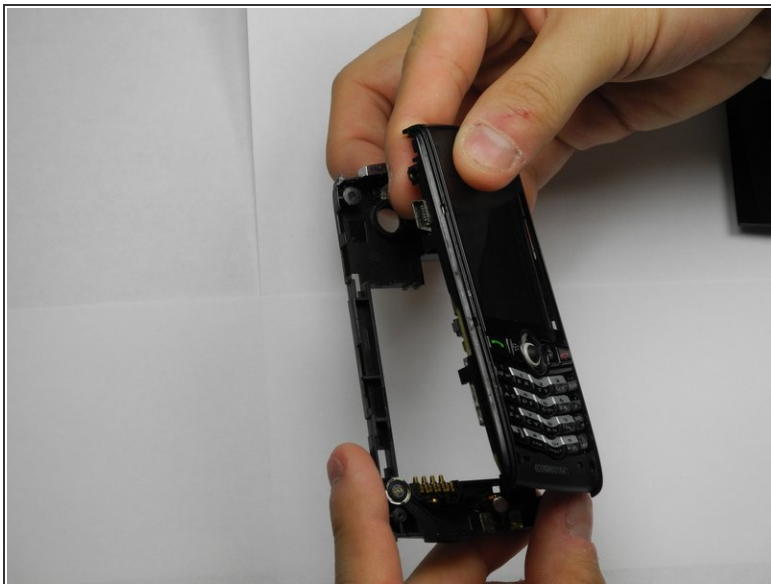
The side covers are attached to the cell phone with small plastic snaps. These snaps can be bent or broken easily.

Step 5 — More screws



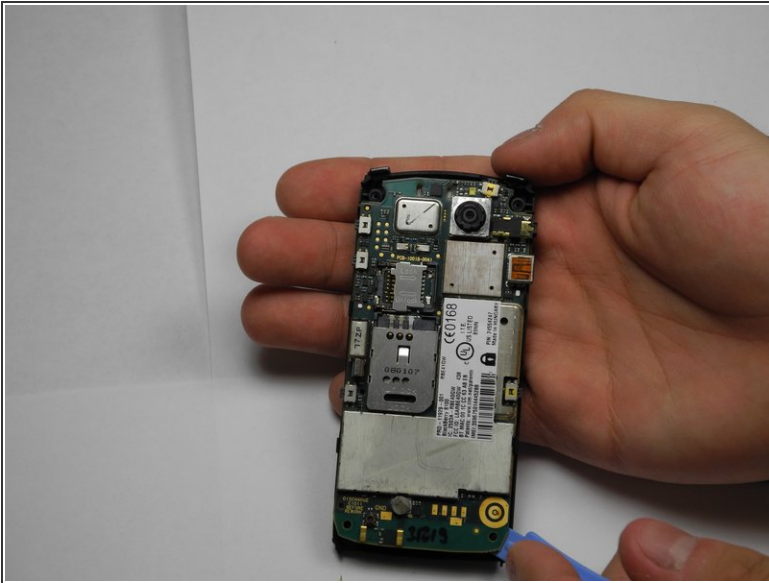
- With the bottom and side covers removed, the two screws indicated by yellow markers will be visible.
- Use the T6 Torx screwdriver to remove the screws.

Step 6 — Frame




- With the screws removed, the frame can be detached.

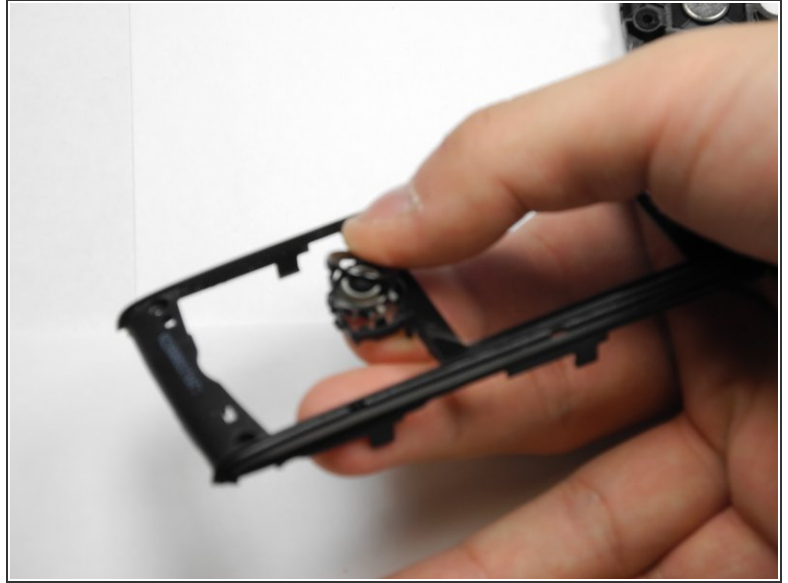
Step 7 — Logic Board




- Use the plastic opening tool to separate the motherboard from the front cover.

 While removing the motherboard, the button that opens the rear cover may come loose along with a small spring. Do not lose these.

Step 8 — Keypad and Trackball



- Separate the keypad (first picture) and trackball (second picture) from the front cover.
 - Lift the piece of plastic that overlays the trackball (second picture). The trackball should then come loose.
-  Keep the trackball intact. The trackball has extremely small magnetic bolts underneath that are difficult to reassemble.

Step 9 — Complete



- These are all the parts of the BlackBerry Pearl 8100 completely disassembled. From left to right, the parts are as follows: rear cover, front cover, motherboard, side covers, trackball, keypad, bottom cover, and frame.

To reassemble your device, follow these instructions in reverse order.