



# Oregon Scientific RM318PA Lens Replacement

This guide will help you to access and replace the lens of the projector.

Written By: Maxine Holden



## INTRODUCTION

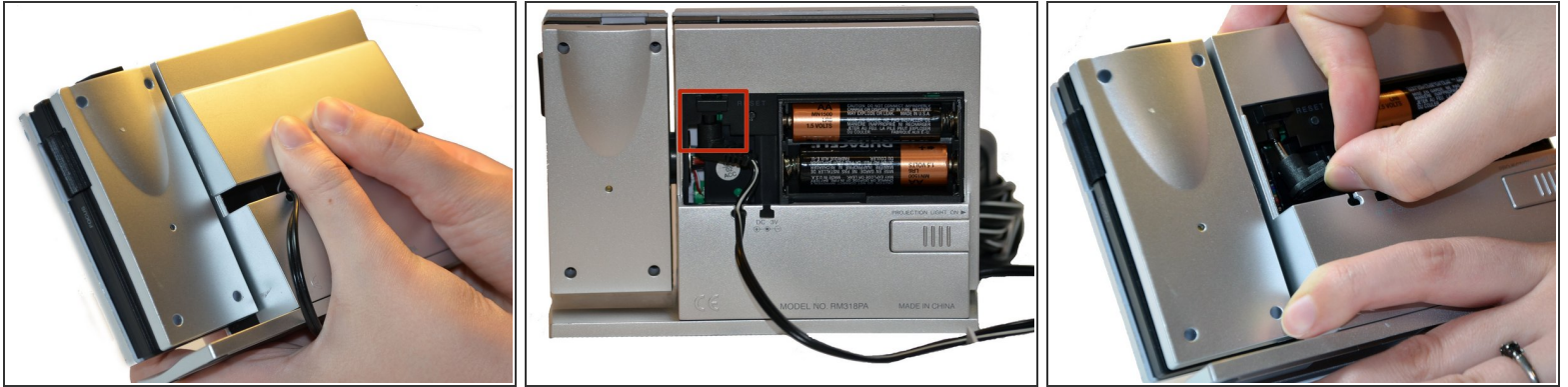
To replace the lens for the projector, this guide will assist you in removing the back casing of the body of the clock as well as the casing of the projector arm.



### TOOLS:

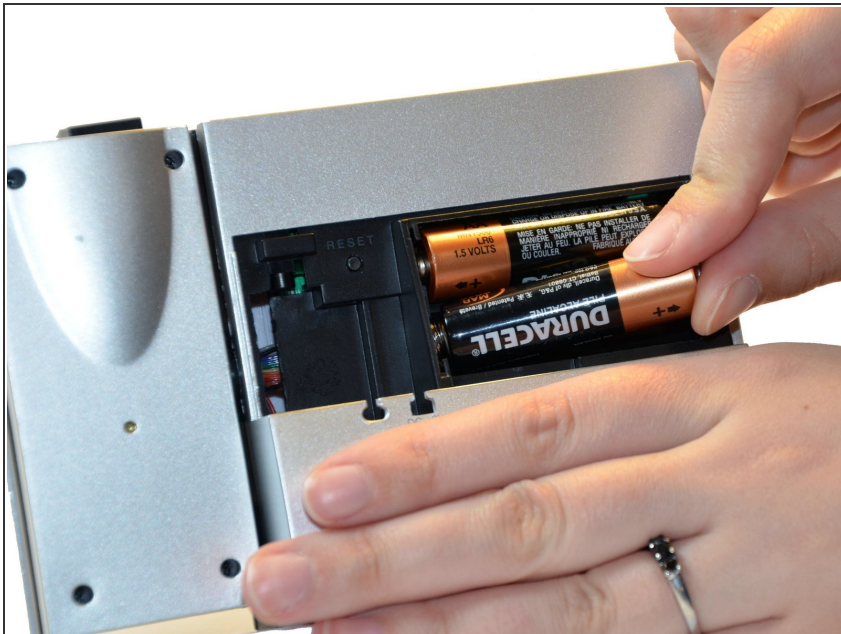
- [Spudger](#) (1)
  - [Phillips #0 Screwdriver](#) (1)
  - [Magnetic Project Mat](#) (1)
  - [Scotch tape](#) (1)
  - [iFixit Opening Tools](#) (1)
-

## Step 1 — A/C Adapter



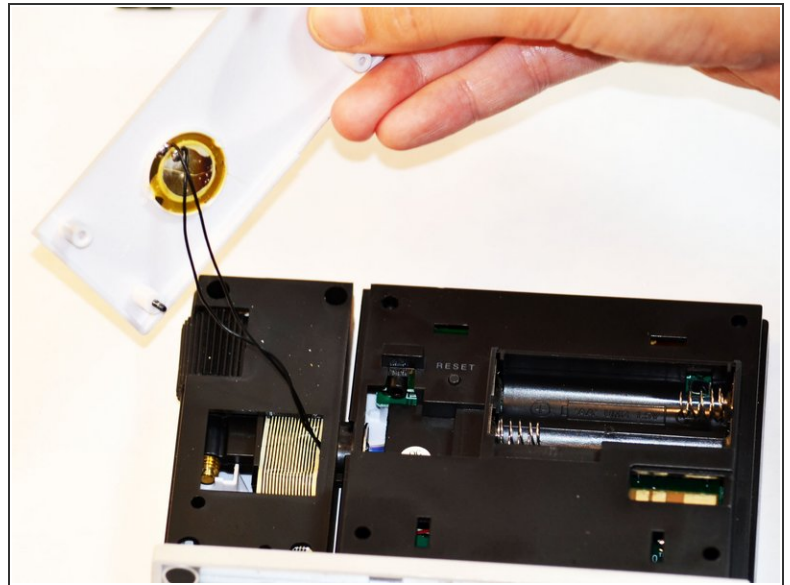
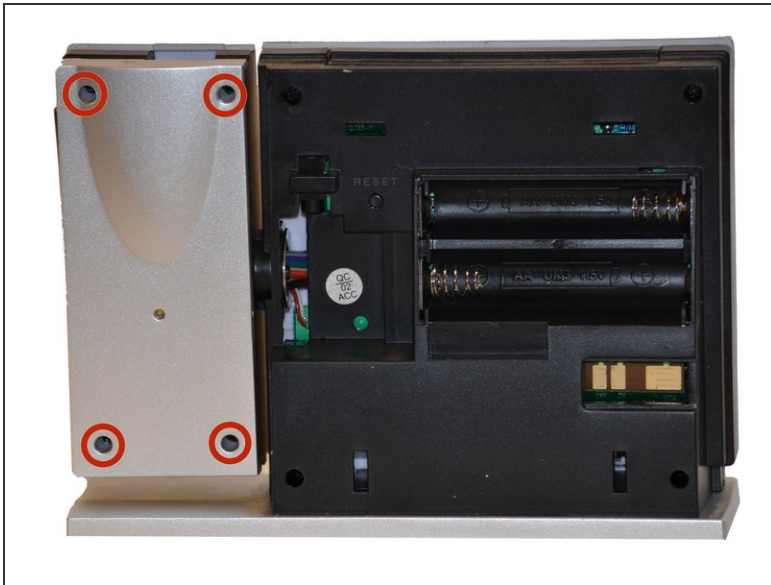
- Hold clock so the screen is facing away from you.
- Using your thumbs, push up on battery cover to remove.
- With your other hand, pull down on the A/C Adapter jack to remove.

## Step 2 — Batteries



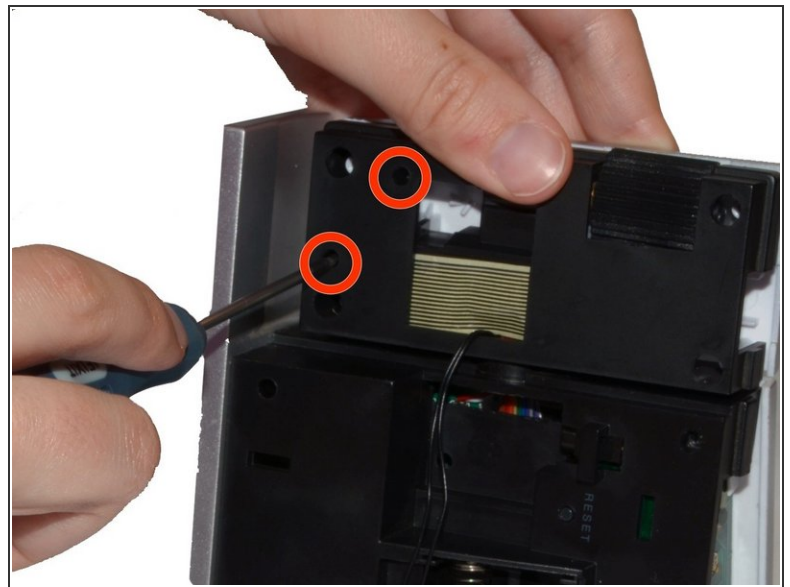
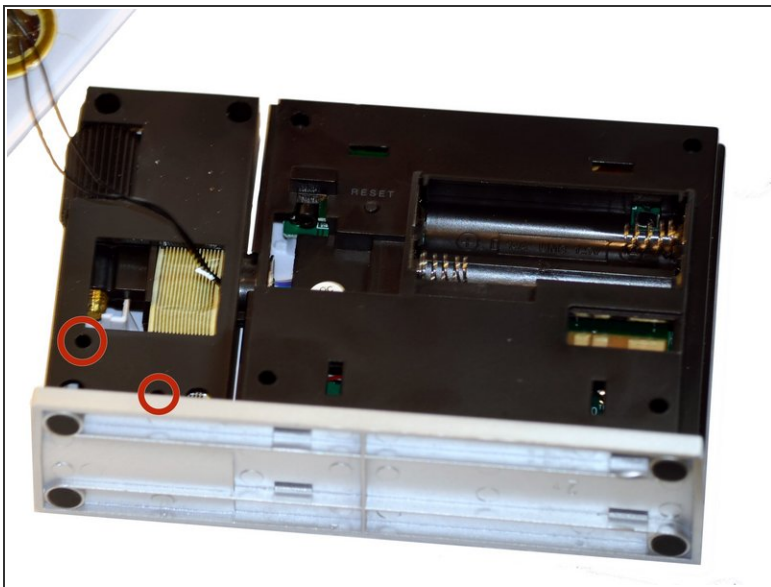
- Remove batteries by pushing a battery toward the spring.
- Lift battery out at an angle. Repeat with second battery.

### Step 3 — Projection Arm



- Use a Phillips #00 Screwdriver to remove the four (4) screws from the back of the projection arm.
- Once screws are removed, lift the back up and off of the projection arm.

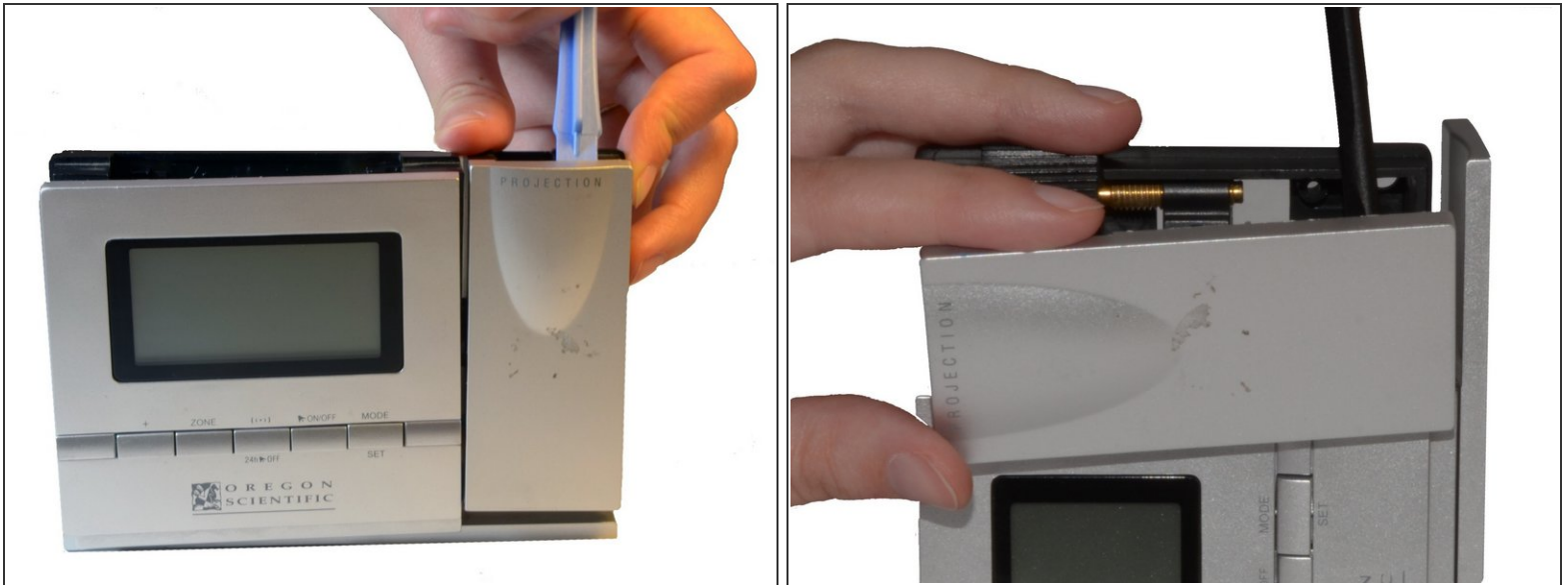
### Step 4 — Screws Projection Arm



- Use a Phillips #00 Screwdriver to remove two (2) screws from back of projection arm.

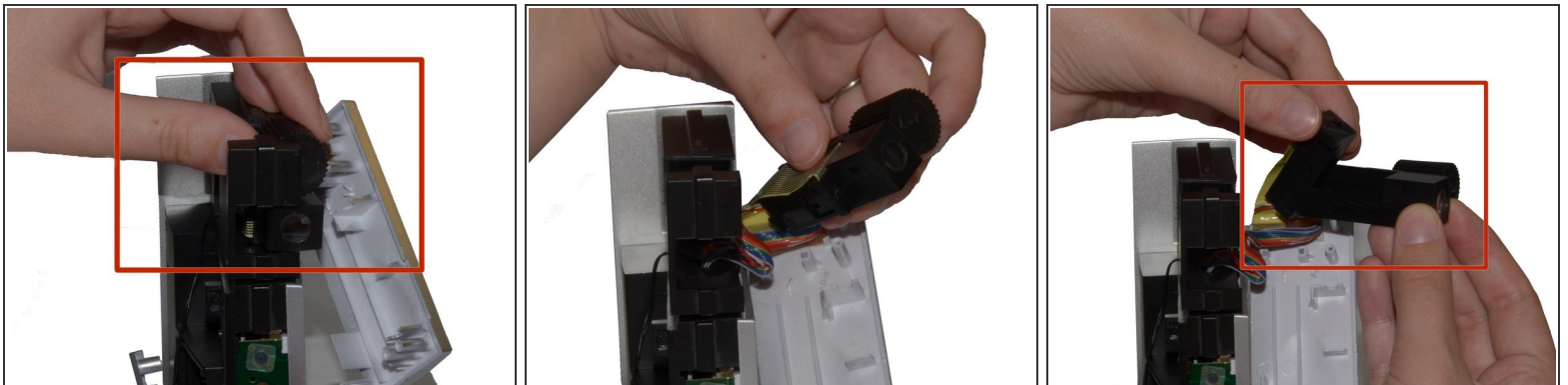


## Step 5 — Front of the Projection Arm



- Use a Plastic Opening Tool to pry open the front of the projection arm casing. Start at the top of the projection arm.
- Once top is partially open, use a Spudger to pry at the side of the projection arm.

## Step 6 — Projection Beam



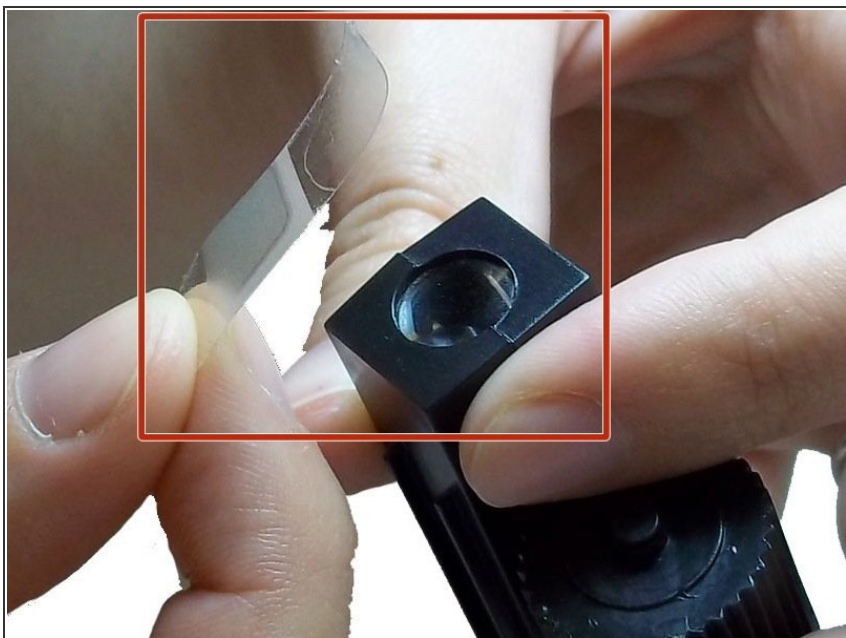
- Turn the clock on its side. Slide the focus wheel forward with your thumb.
- The Projection Beam and Focus Wheel Component should now be free of Projection Arm.
- Hold the Component in one hand and lift the Projection Beam up and away from the Focus Wheel.

## Step 7 — The Lens



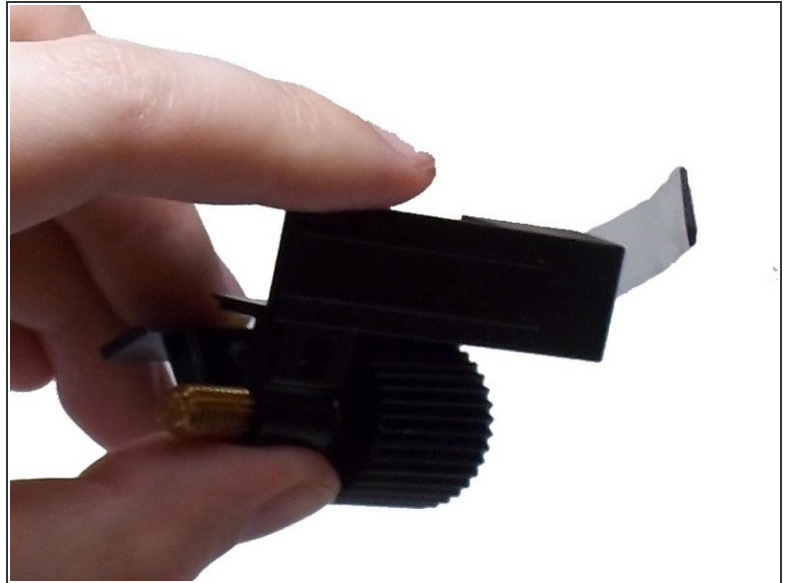
- The Lens is attached to the Focus Knob and is now accessible for replacement purposes.

## Step 8 — Tape



- ⚠ Apply tape to the lens for safe removal and prevention of injury.

## Step 9 — Focus Knob



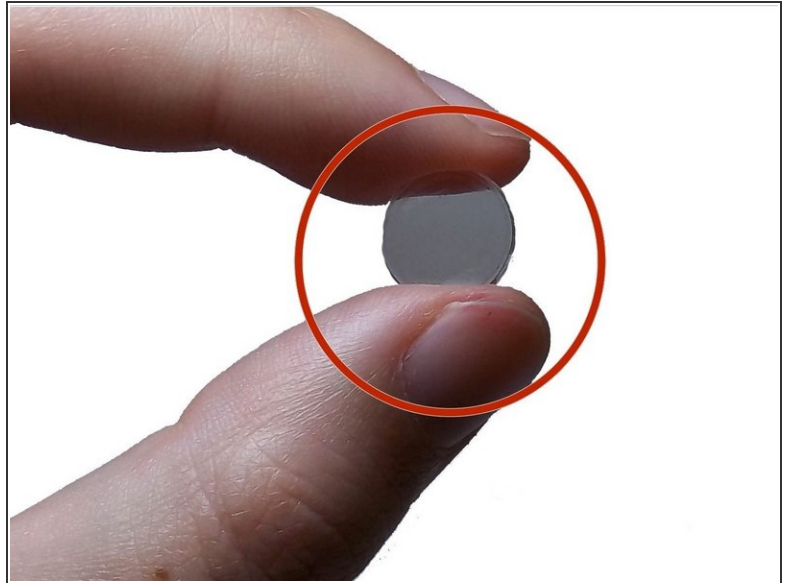
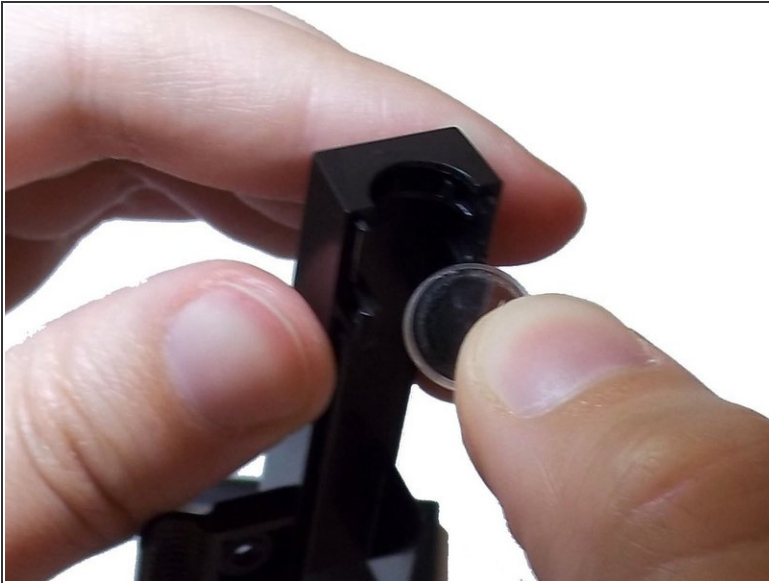
- Detach the focus knob from the internal casing of the lens by removing the screw from the base of the focus knob grip.
- Pry apart the pieces of casing holding the focus knob in place and remove the knob.

## Step 10 — Internal Casing




- Insert the spudger into the opening above the hinge on the side of the casing.
- Press down firmly until the case opens.

## Step 11 — Lens Removal



- Pull apart the casing and gently slide lens from pocket.

 Be sure to replace with a concave lens.

To reassemble your device, follow these instructions in reverse order.