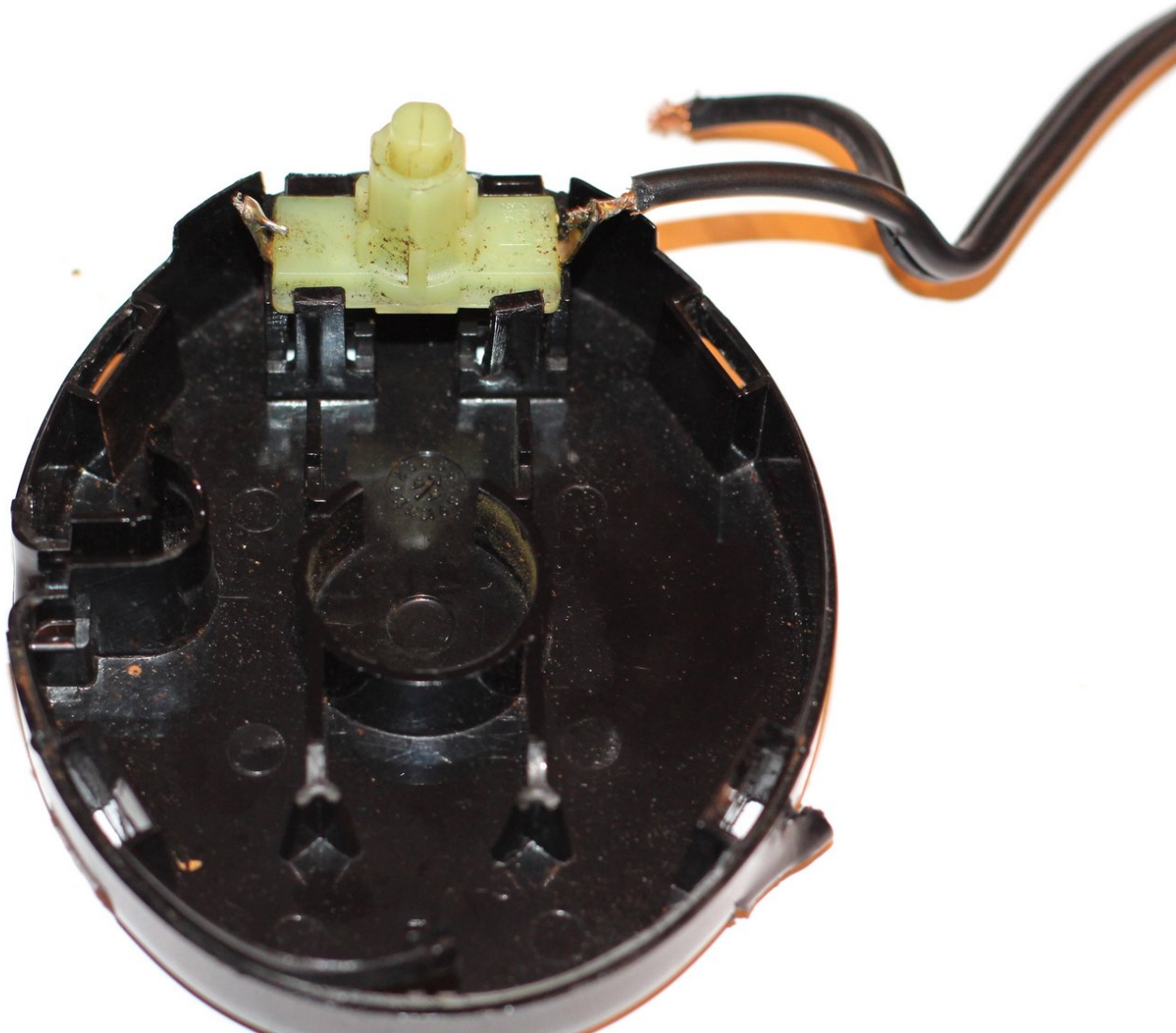




Krups F203 Coffee Grinder Trigger Assembly Replacement

The trigger assembly that connects the button...

Written By: Ian Hancock



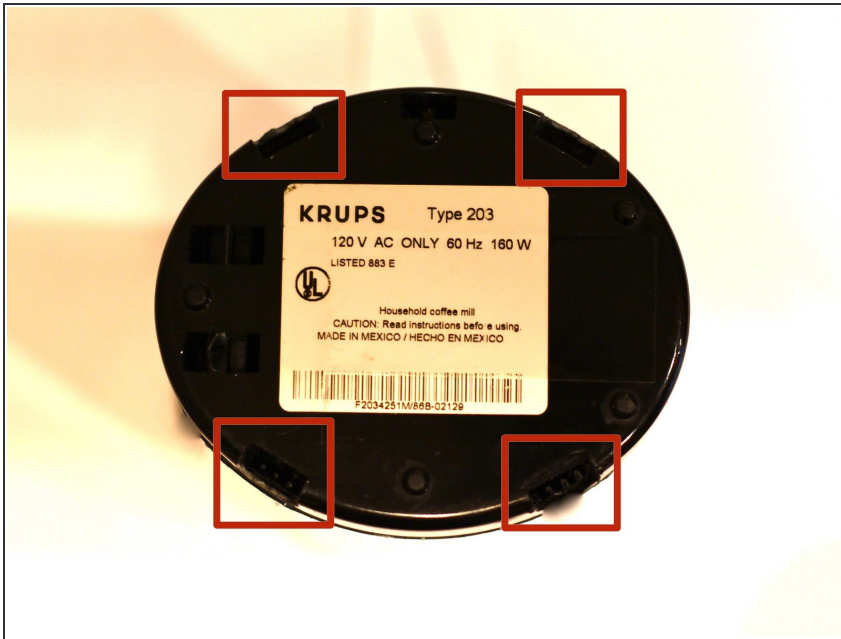
INTRODUCTION

The trigger assembly that connects the button to the motor can sometimes break. This guide will explain how to replace the trigger assembly.

TOOLS:

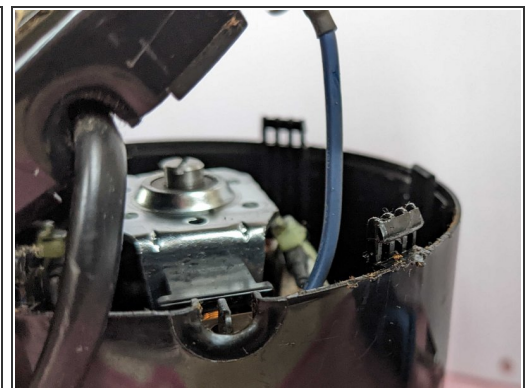
- [Spudger](#) (1)
 - [Soldering Workstation](#) (1)
-

Step 1 — Base Plate



- In each of the four rectangular slots on the bottom of the device, there is an E-shaped clip.

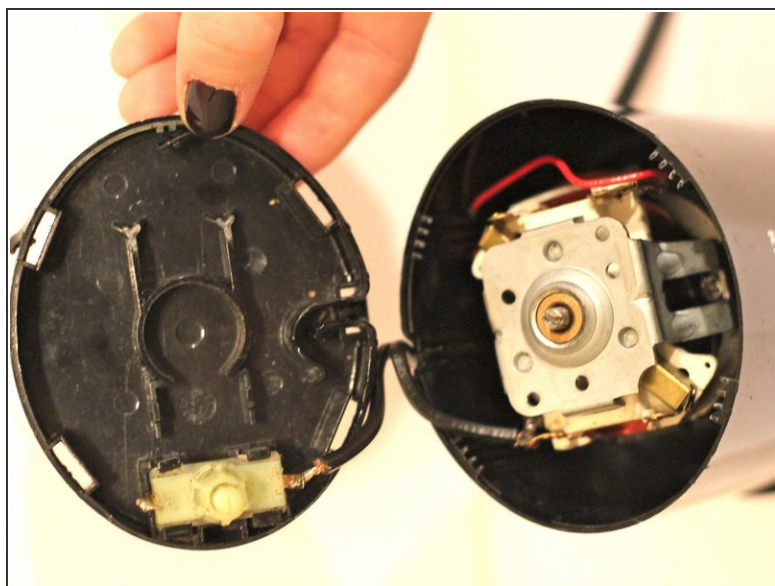
Step 2



- Wedge the spudger between the flat side of the E-clip and the outside wall of the slot. Then, loosen up the clip by prying it inward with the spudger.

⚠ Try not to break these clips as this will cause structural integrity issues upon reassembly

Step 3



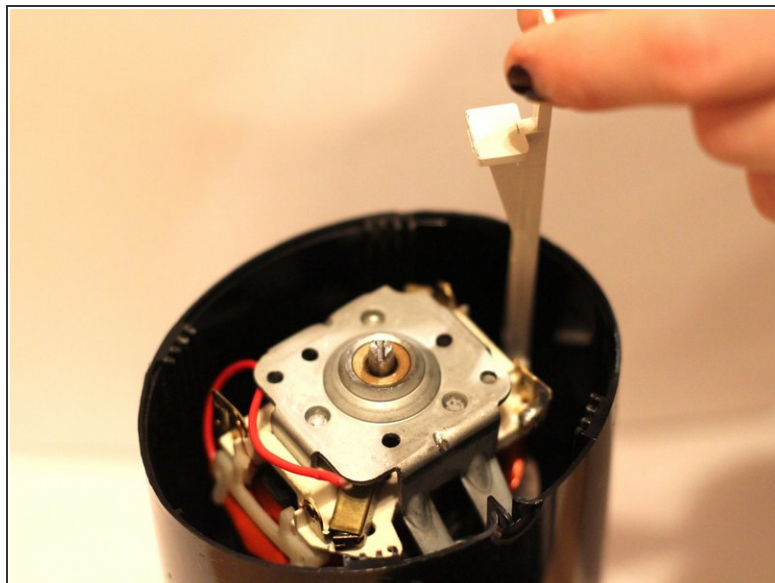
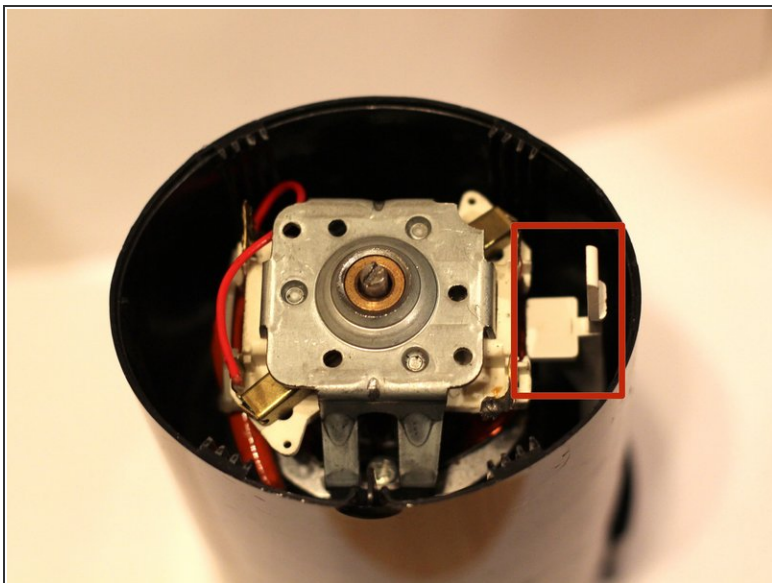
- Work your way around the four clips, loosening each a little at a time. Eventually, all four clips will be loose enough to remove the base plate.

Step 4 — Detach Trigger Button from Base Plate



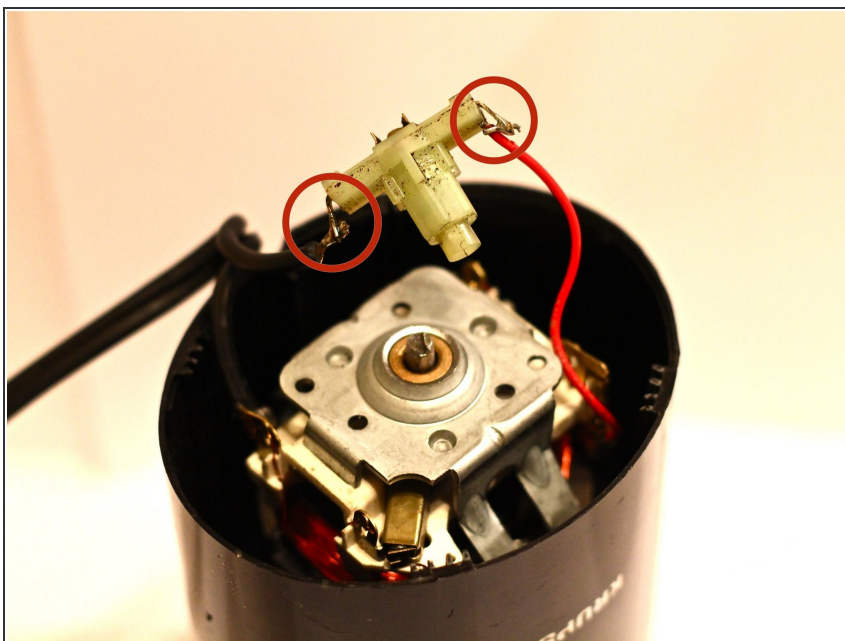
- The trigger button is held in with light tension clips. Gently pry them back to release.

Step 5



- Remove the white trigger.

Step 6



- Desolder the contact points between the trigger button and the red wire and also where the plug attaches to the trigger button
- ⓘ Be sure to reference the how to solder video posted to the device page

To reassemble your device, follow these instructions in reverse order.