



# Mac Pro First Generation GPU Replacement

Accessing the GPU is easy and requires no...

Written By: Andrew Kim



# INTRODUCTION

Accessing the GPU is easy and requires no tools. Use this guide to add or replace RAM for your Mac Pro.

## Step 1 — Case Panel



- Lift the lever to unlock the case.

## Step 2



- Remove the side panel of the Mac Pro.

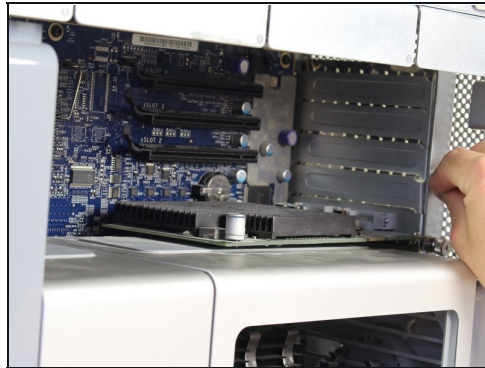
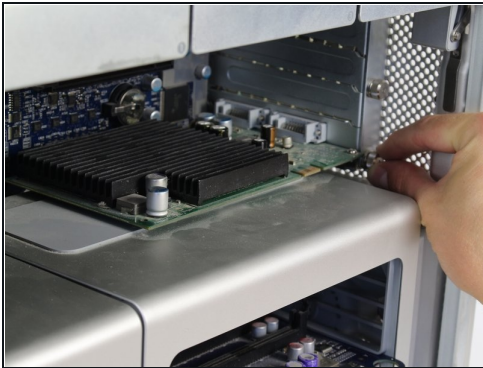
⚠ Discharge any static electricity by touching a grounded surface prior to working on any internal components. Touching the metal PCI slot covers works great, or any other grounded metal surface. You can also wear a [anti-static wrist strap](#).

### Step 3 — GPU (Graphics Card)



- Locate the graphics card in the open panel side of your Mac Pro.

### Step 4



- Unscrew the two thumb screws by twisting counterclockwise using your fingers until the slide lock is released.
- Remove the slide lock.



## Step 5



- Push up on the clip directly behind the graphics card to release it from its slot.
  - Slide the graphics card out of the slot using both hands by firmly holding the corners of the top of the card as shown.
- ⚠ Handle the card only by its edges. Don't touch any exposed components or connectors.

---

To reassemble your device, follow these instructions in reverse order.