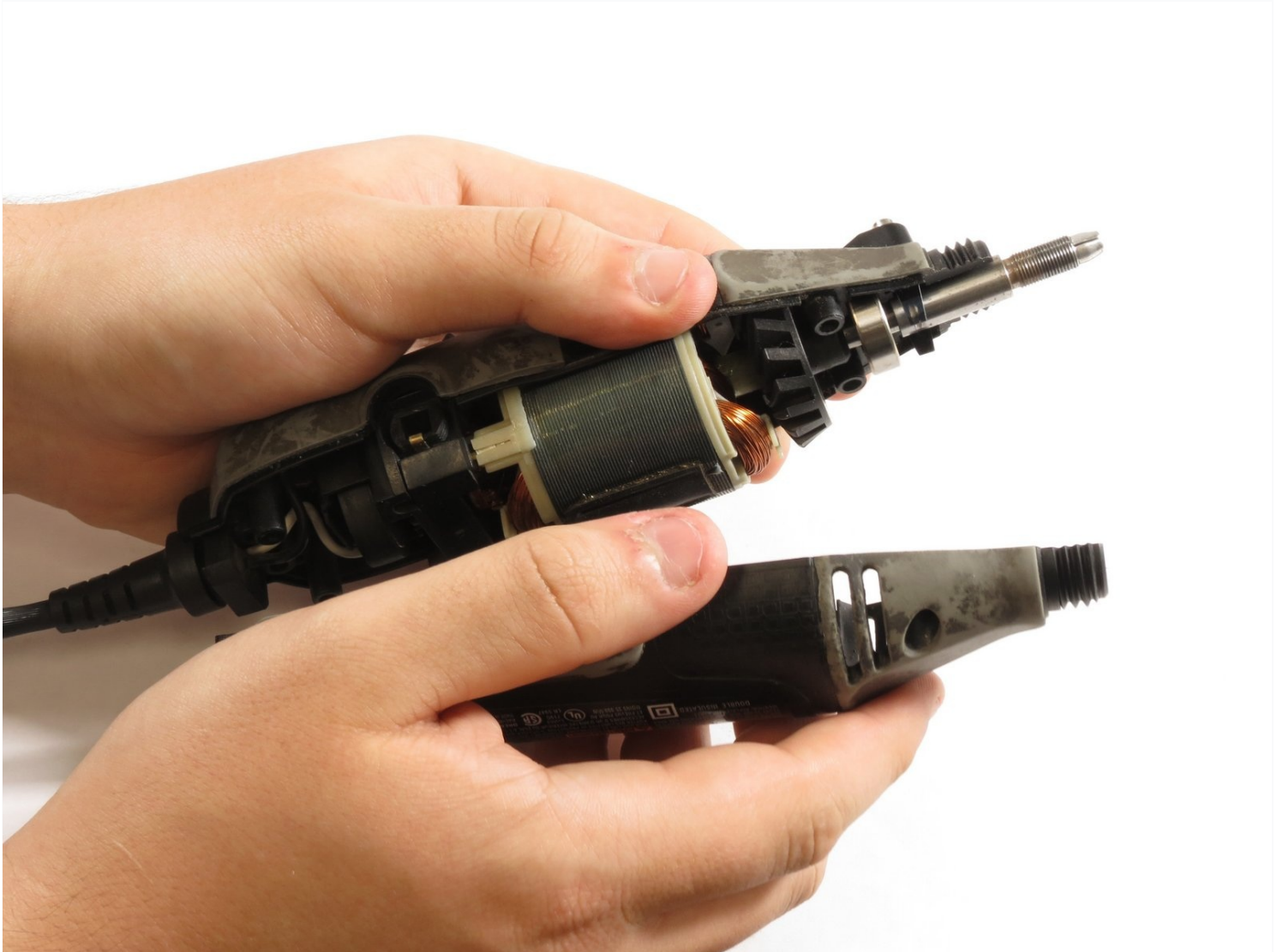




# Dremel MultiPro 395 Casing Replacement

This guide will show how to replace damaged...

Written By: Matthew Satton



# INTRODUCTION

This guide will show how to replace damaged casing on the Dremel MultiPro 395.

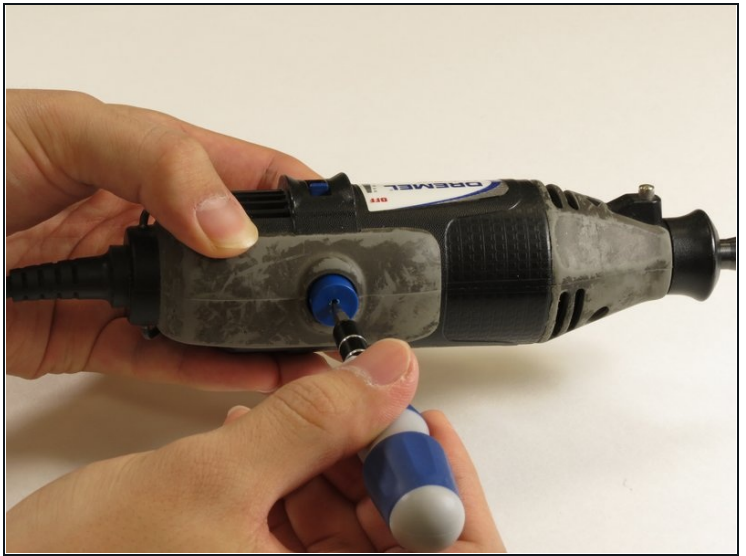
---

## TOOLS:

[T15 Torx Screwdriver](#) (1)

---

### Step 1 — Casing



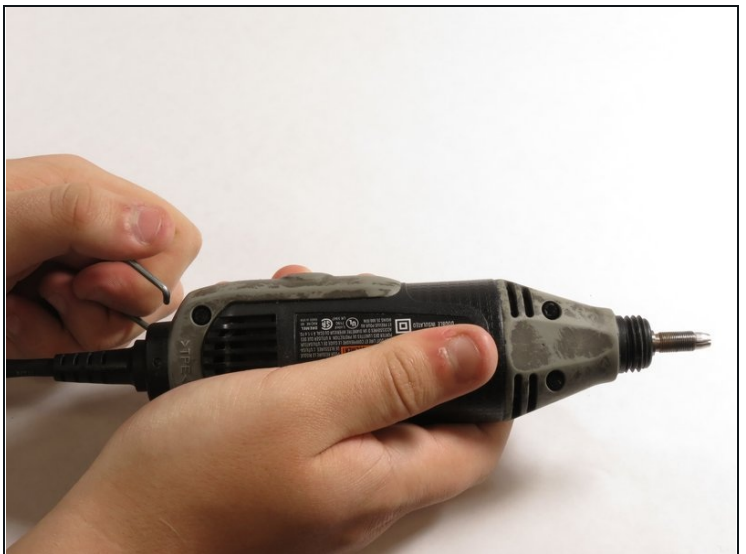
- Remove the blue caps located on either side of the MultiPro, using a [3 mm flathead](#) screwdriver.

## Step 2



- Carefully remove the carbon brushes attached at the end of the springs by gently pulling on the springs using your hands.

## Step 3



- Pull one side of the hanger up and then pull away from the Multipro until the other side can be pulled out.



## Step 4



- Remove the 4 screws located on the bottom of the Multipro with a T15 screwdriver.

## Step 5



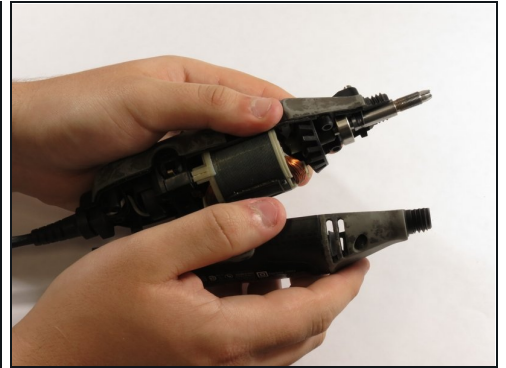
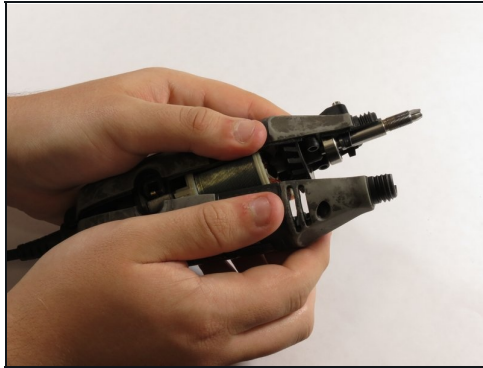
- Hold down the collet lock, remove the chuck cap from the top of the Multipro by screwing counterclockwise.

## Step 6



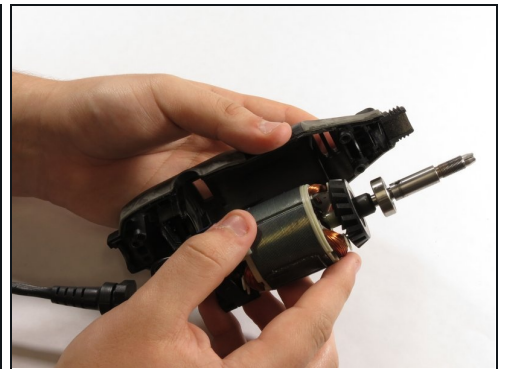
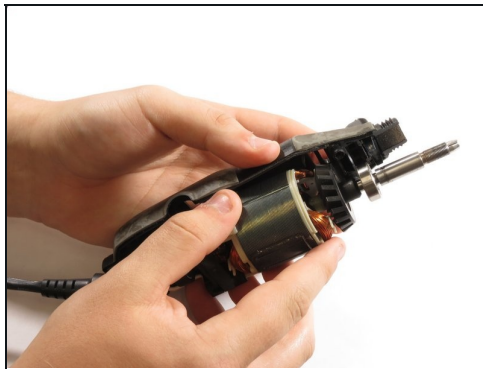
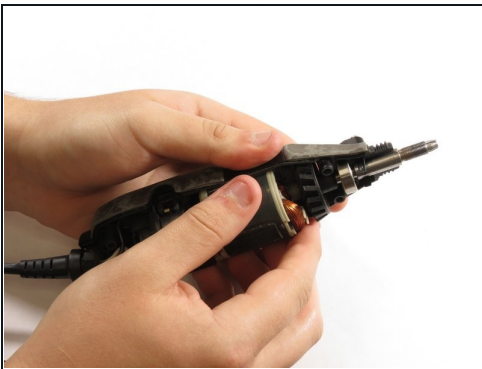
- Remove the black housing cap from the Multipro located directly below the chuck cap.

## Step 7



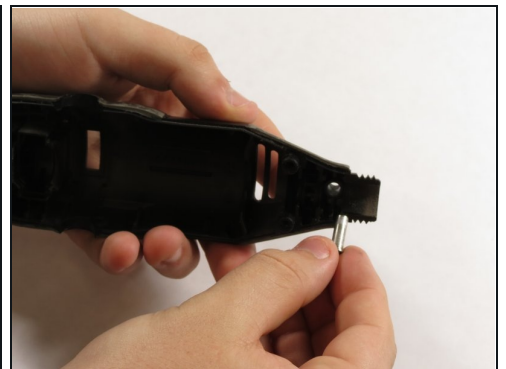
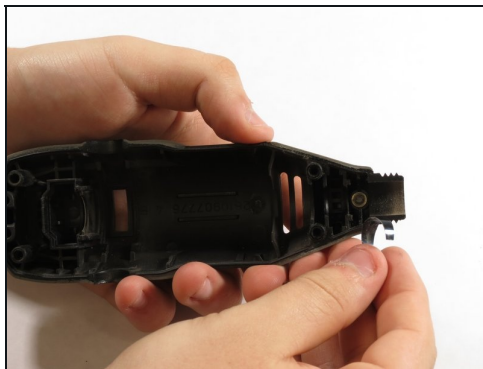
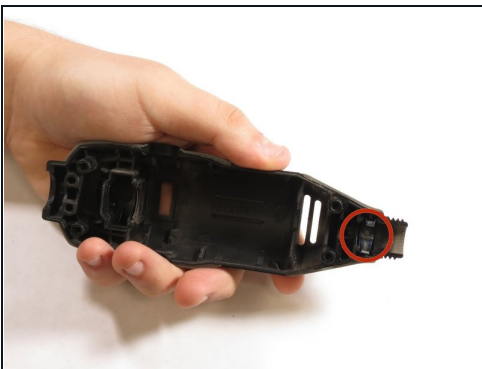
- Pull the bottom side of the casing up to remove it.

## Step 8



- Gently lift the motor shaft out of the Multipro.

## Step 9



- Pull the lock pin and its casing out of the other side of the Multipro case.

---

To reassemble your device, follow these instructions in reverse order.