

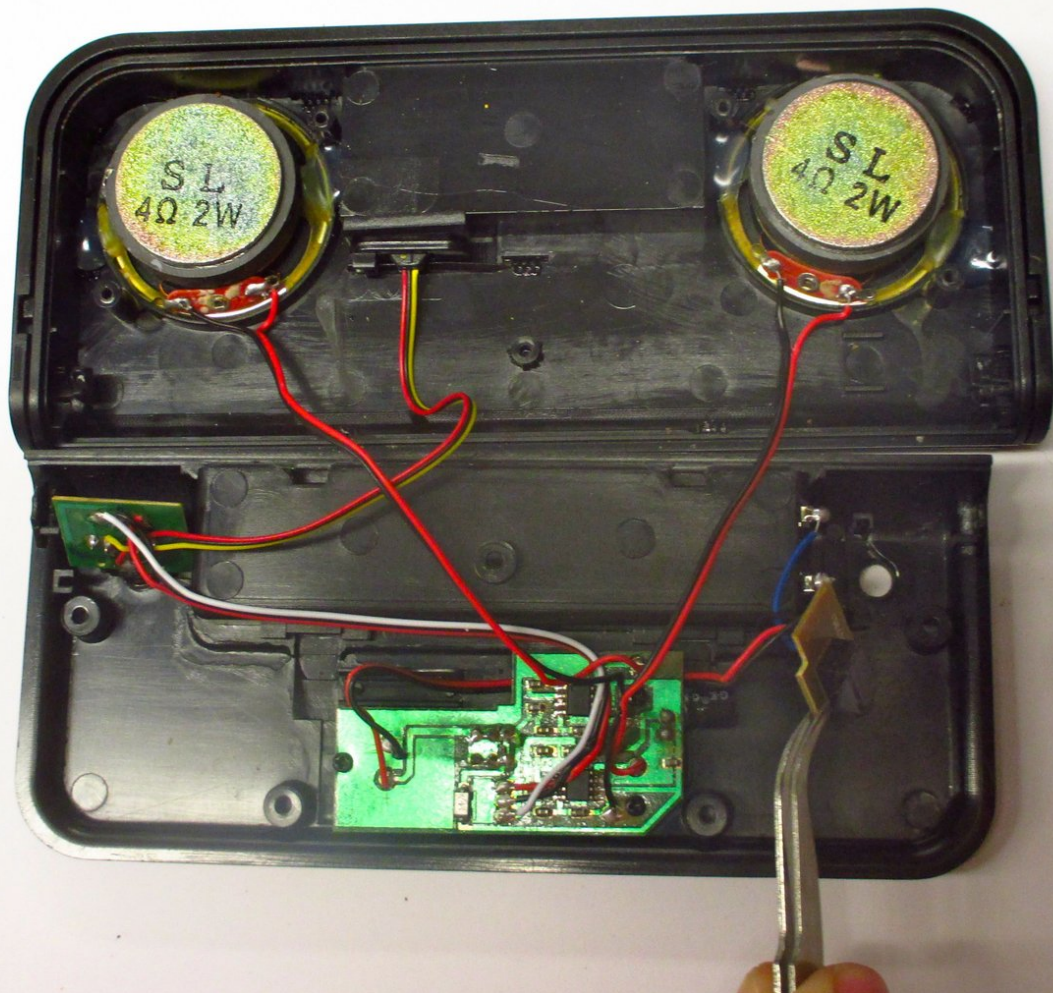


iHip Fold-up Portable Speaker DC IN 6V

Adapter Replacement

DC IN 6V Adapter removal and replacement.

Written By: Cristina Garcia



INTRODUCTION

This guide will demonstrate how to properly remove the fault DC IN 6V adapter and replace it with a new one.

TOOLS:

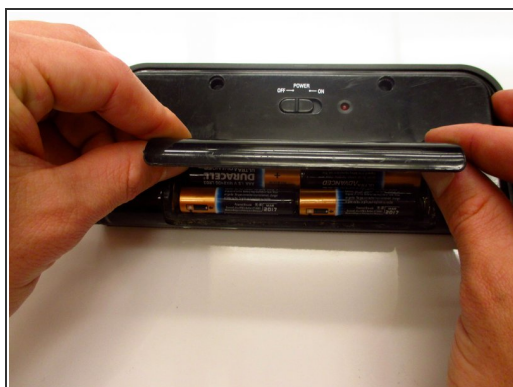
- [Detailing Brush](#) (1)
 - [Phillips #0 Screwdriver](#) (1)
 - [Portable Soldering Iron](#) (1)
-

Step 1 — Removing the battery case cover



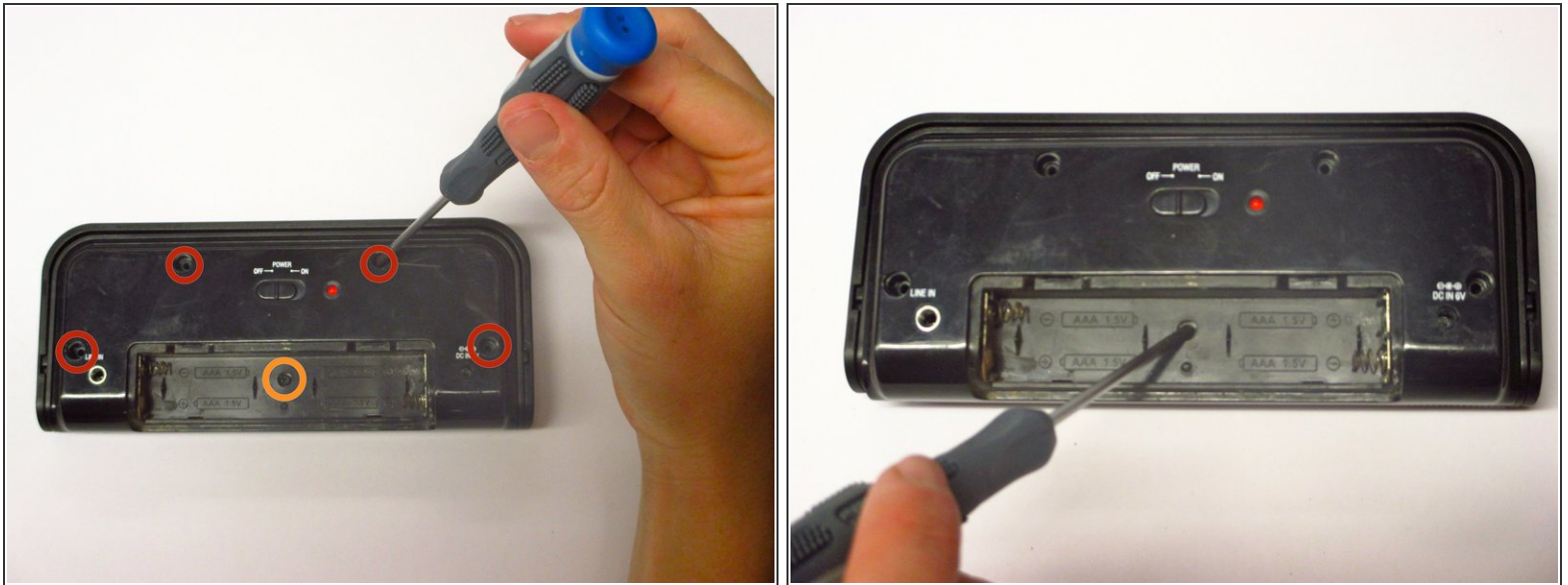
- Use your fingers to slide the battery case cover off in the direction of the arrows.

Step 2 — Cleaning the battery case



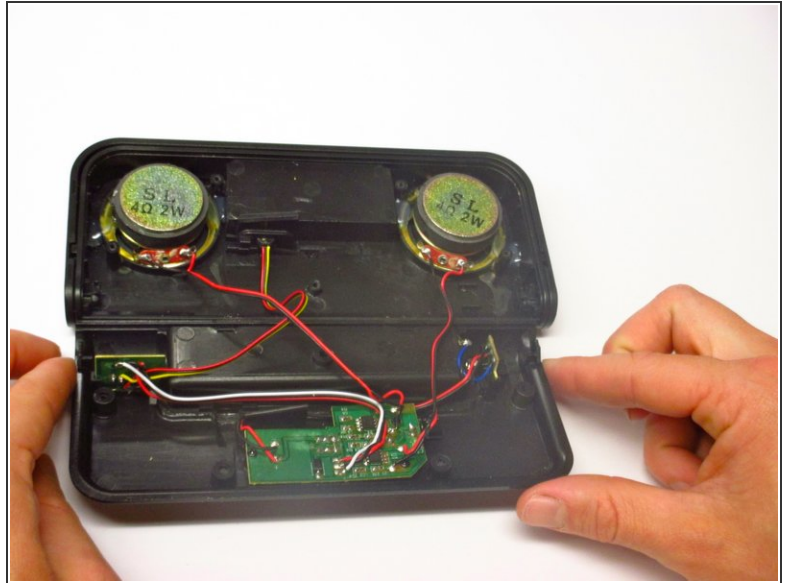
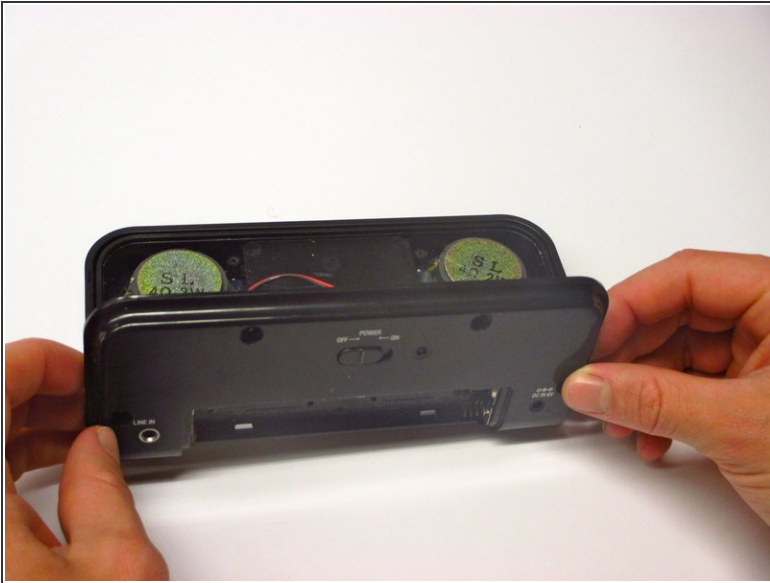
- Remove the four AAA batteries. Be sure to check your nearest battery recycling point!
- ⓘ Use the detailing brush and a paper towel to remove any corrosion left by previous batteries.

Step 3 — Removing the screws



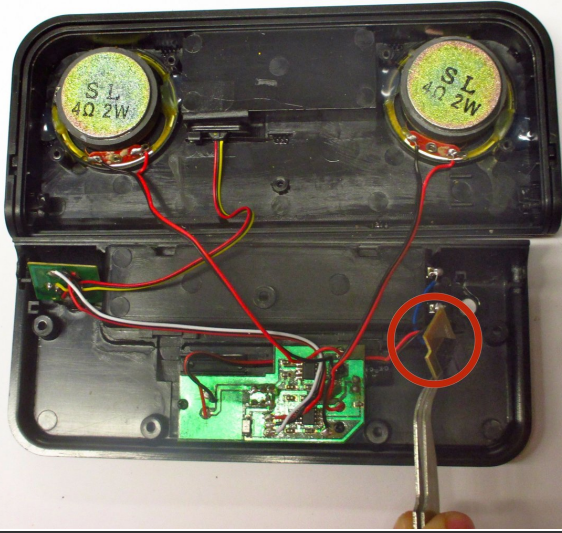
- Unscrew the four outer 1.0 mm screws with a Phillips-Head screwdriver.
 - ⓘ Screws will be magnetized in position and will require the use of tweezers to be removed.
- Push down gently on the battery case cover and slide it in the direction the arrows indicate. Remove the batteries.
- Unscrew the 0.6 mm screw located in the center of the battery case.
- Keep the 1.0 mm and 0.6 mm screws separate from each other for reassembly.

Step 4 — Removing the back cover



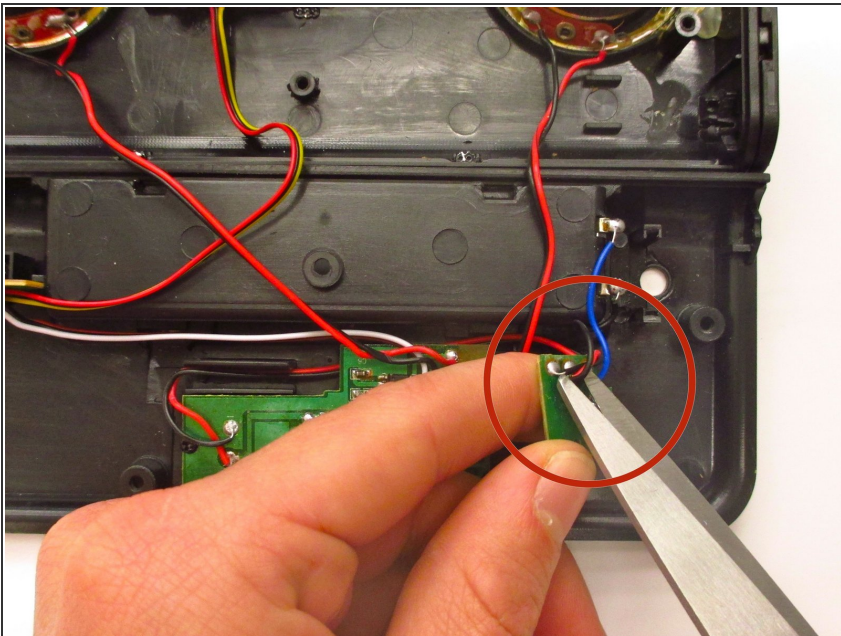
- Remove the back cover carefully; there are many wires that connect it to the device.

Step 5 — Locating the DC IN 6V Adapter



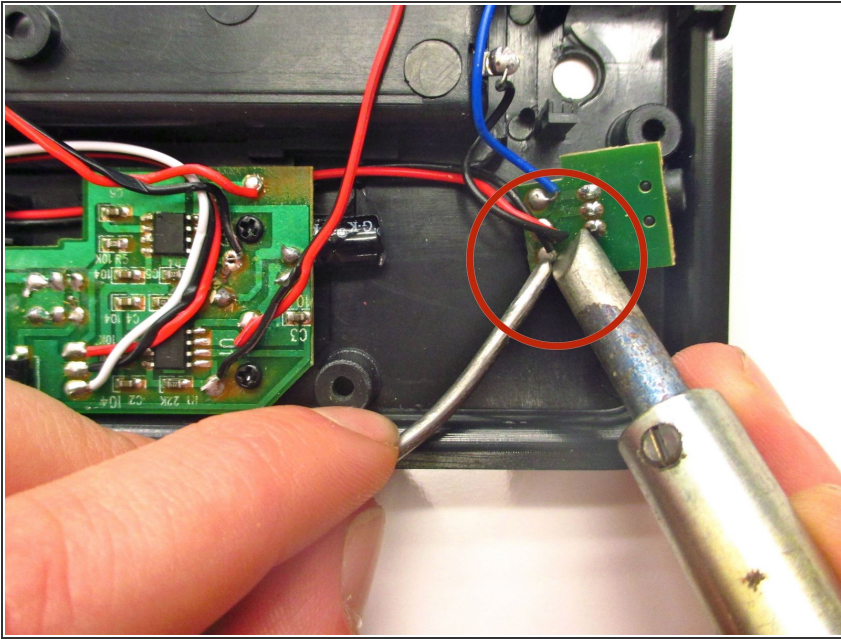
- Position the portable speaker device so that the back cover and the speaker are both laying flat, giving you access to the inside of the device.
- If the motherboard is at the bottom when you are looking down at the device, the DC IN 6V adapter should be on the right side of the back cover.
- ❗ It is also labeled on the outside of the back cover in white font.

Step 6 — Removing the adapter



- Remove the black and red wires attached to both the motherboard and the adapter by cutting them with scissors.
- Repeat previous step for the blue and second black wire connecting the adapter to the battery case.
- At this point, you should be able to carefully remove the entire faulty adapter and the wires.

Step 7 — Assembling new adapter



- Position the newly purchased DC IN 6V adapter and wires in their original place.
- Using a soldering iron and soldering wire, reattach the black wire from the battery case (above DC IN 6V chip) to the bottom of the DC IN 6V chip.
- Using the soldering iron soldering wire, reattach the red and black wire from the motherboard (on the left of the DC IN 6V chip) in that respective order above the previously soldered black wire.
- Use the soldering iron and soldering wire one last time to reattach the blue wire above the soldered black wire from the motherboard.

To reassemble your device, follow these instructions in reverse order.