



# Sony Reader Touch Edition PRS-600 Screen Replacement

This guide will show you how to replace the screen of the device

Written By: Zachary Jeffers





## TOOLS:

- [Phillips #000 Screwdriver](#) (1)
  - [Spudger](#) (1)
-

## Step 1 — Back Panel



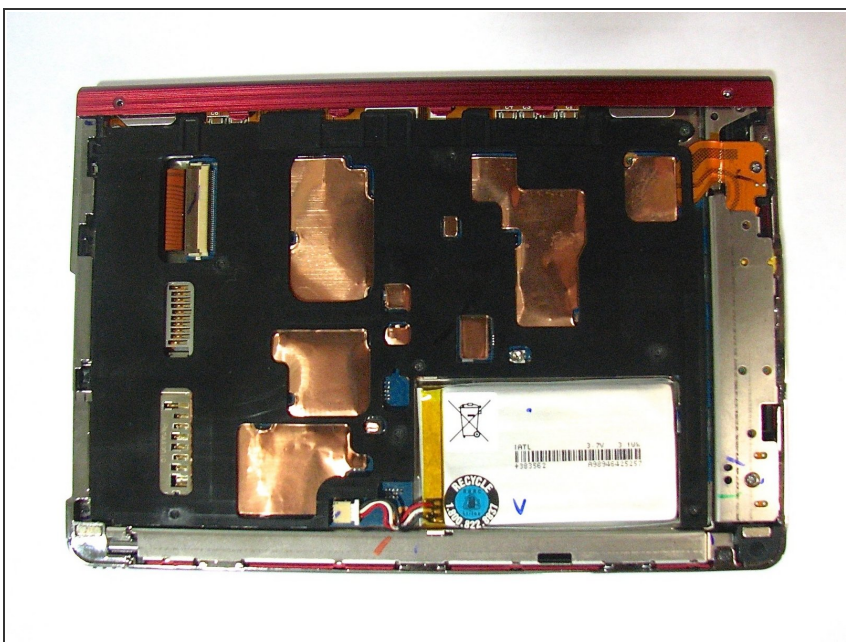
- Using the Phillips head screwdriver PH000, remove the two 1.4 mm screws that are located on the backside of the device.

## Step 2



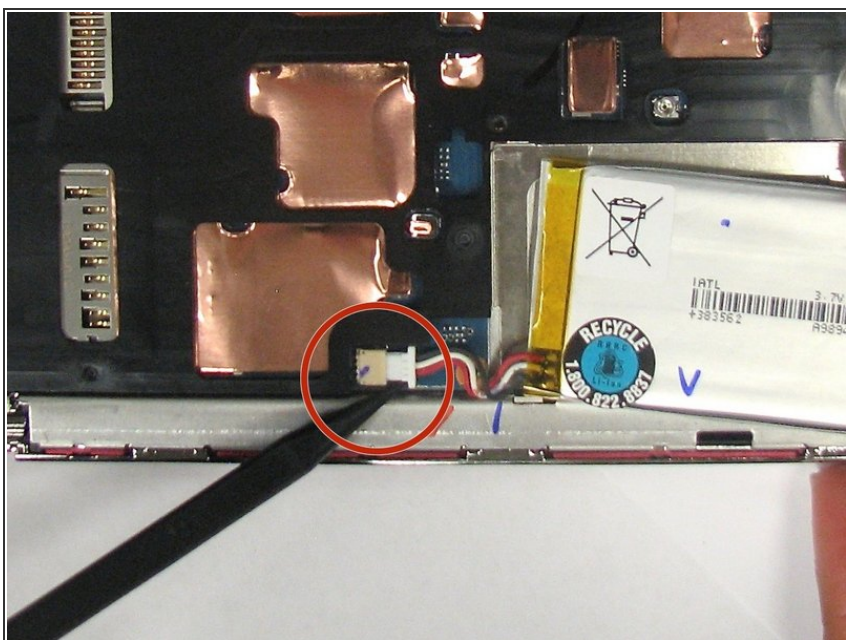
- Slide the back cover off by pushing it to the left, away from the side that held the screws.
- Remove the cover.

## Step 3



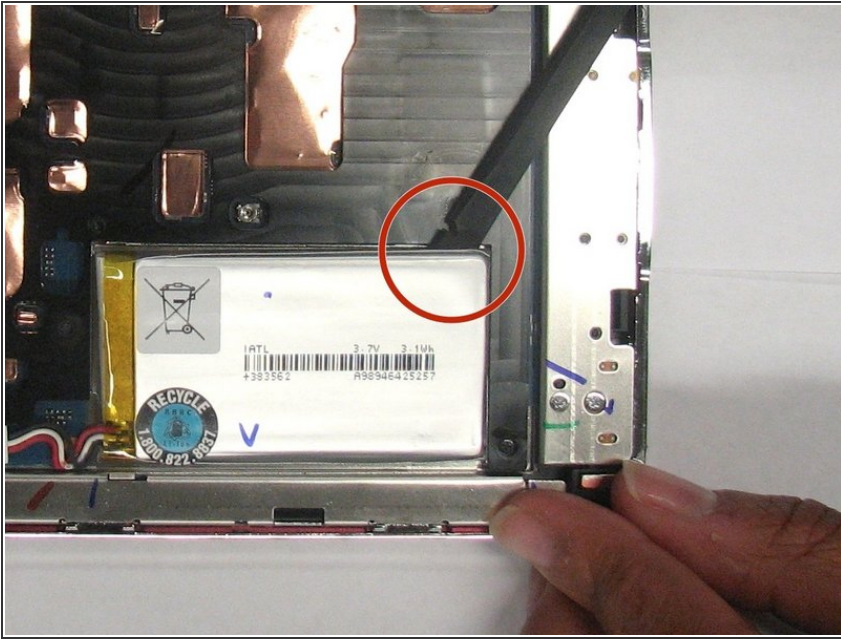
- This is what the device should look like once the back cover panel has been removed.

## Step 4 — Battery



- Once the back cover has been removed locate the battery in the bottom right corner of the device.
- Using the pointed end of the spudger, push out the white plug that is connected to the battery from its beige base.

## Step 5



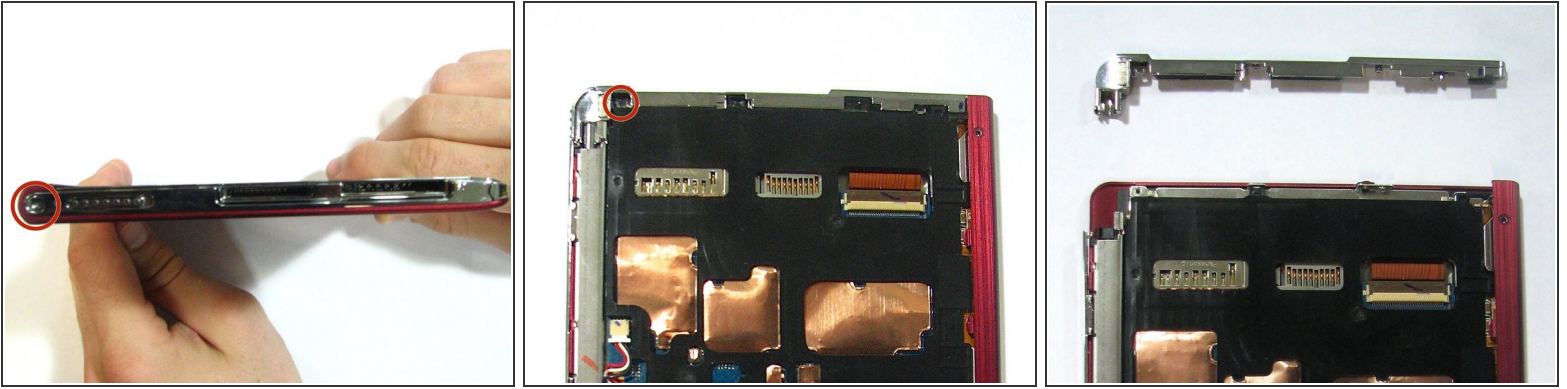
- Use the flat end of the spudger to pry the battery out of its holder. There may be glue holding it in place.

## Step 6 — Power Button



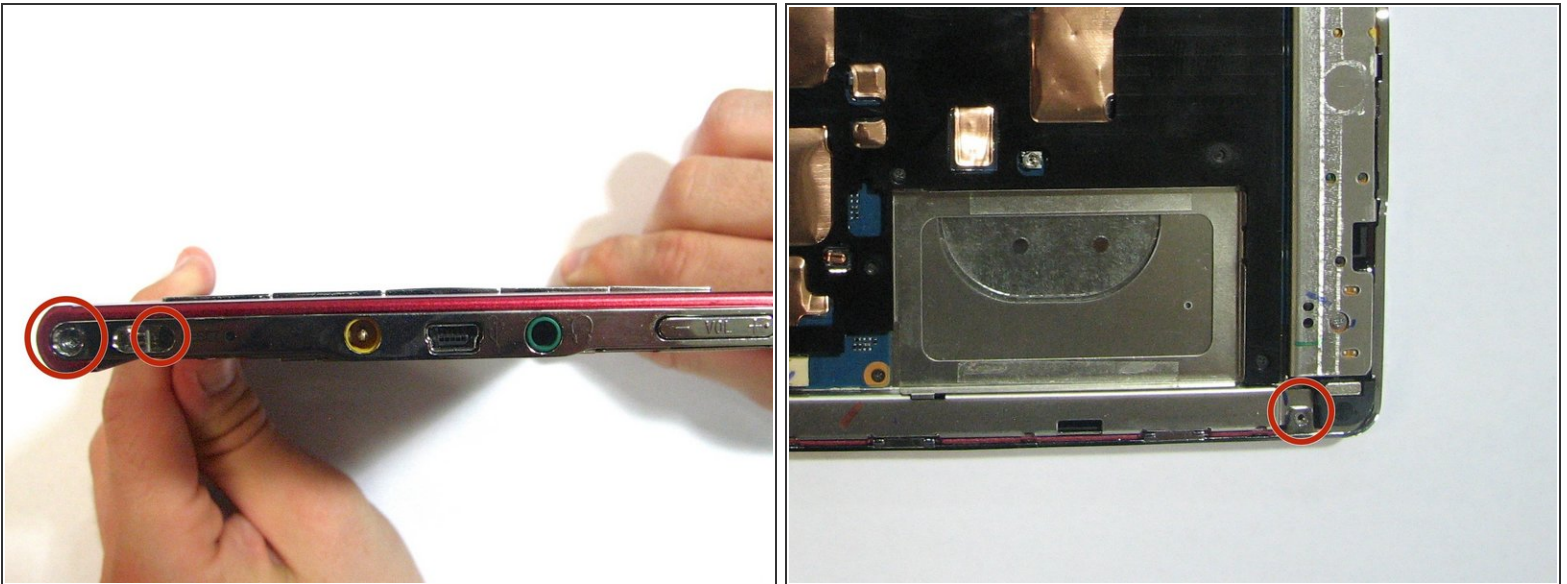
- Remove the stylus from the device.

## Step 7



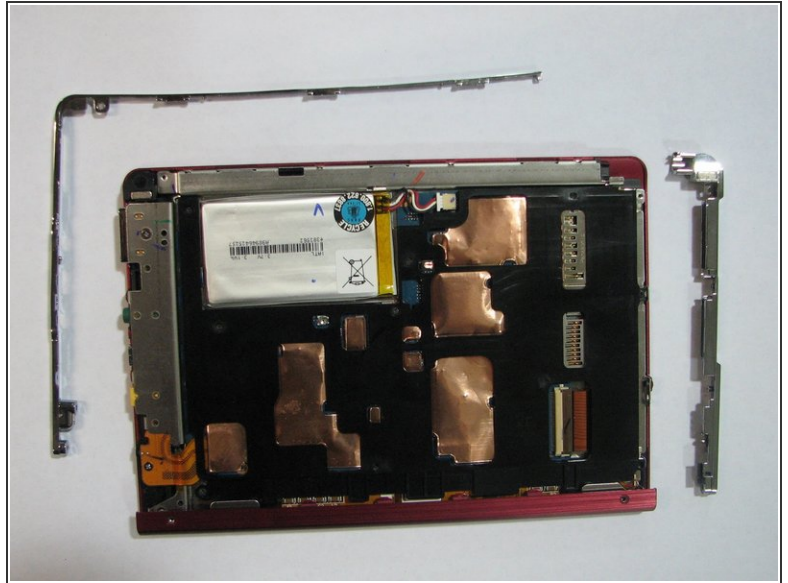
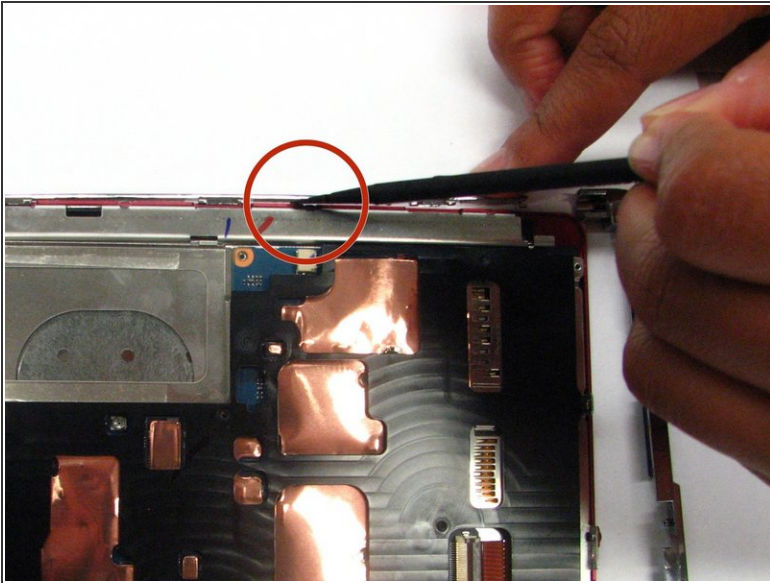
- Using the Phillips screwdriver remove the 1.4 mm screw from the top panel.
- Using the same screwdriver, remove the 1.4 mm screw from the back of the device.
- Pry apart off the top panel of the device.

## Step 8 — Side and Bottom Panel



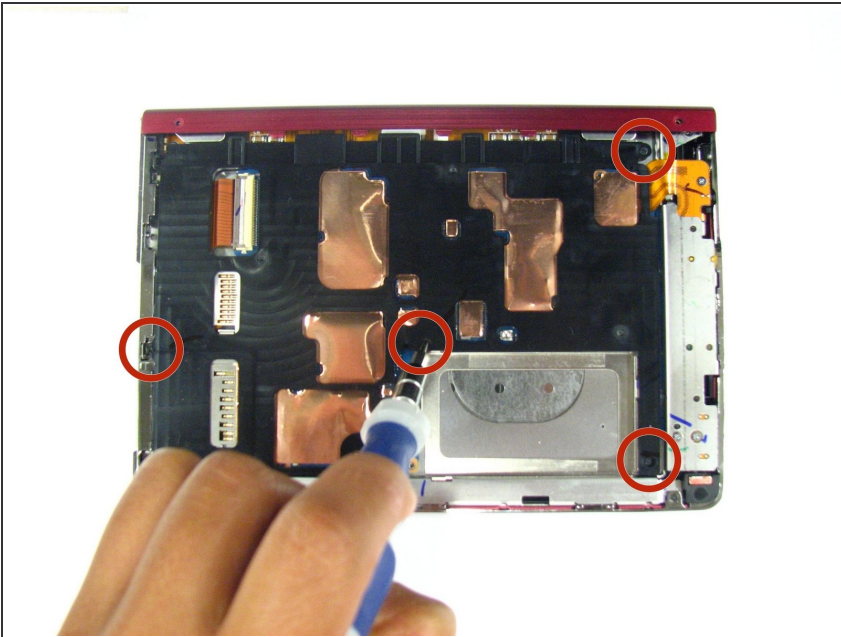
- Using a Phillips head screwdriver, remove the two 1.4 mm screws from the bottom panel of the device.
- Using the same screwdriver, remove the 1.4 mm screw that is located on the back of the device.

## Step 9



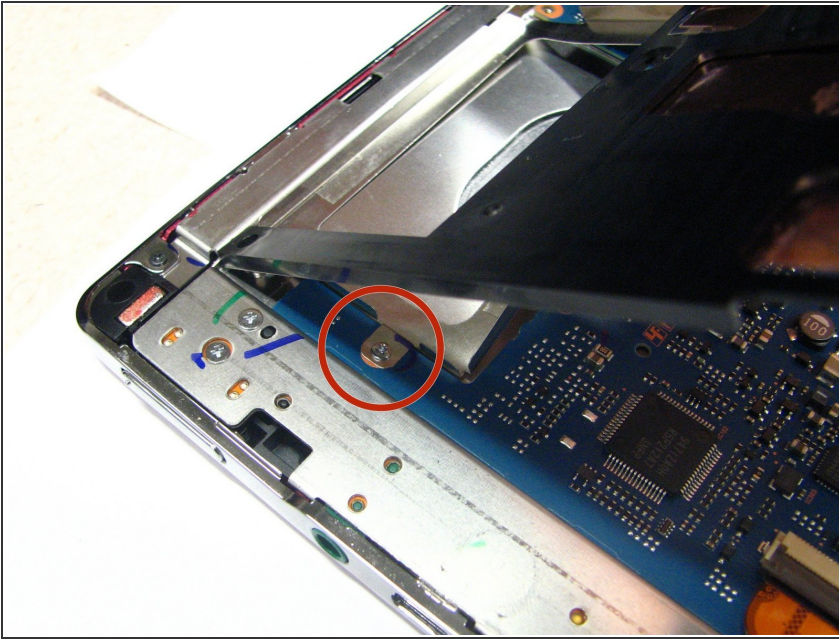
- Pull the panel away from the device. You may have to use the flat end of the spudger to remove the side portion of the panel because it will be glued in place.

## Step 10 — Inner Casing



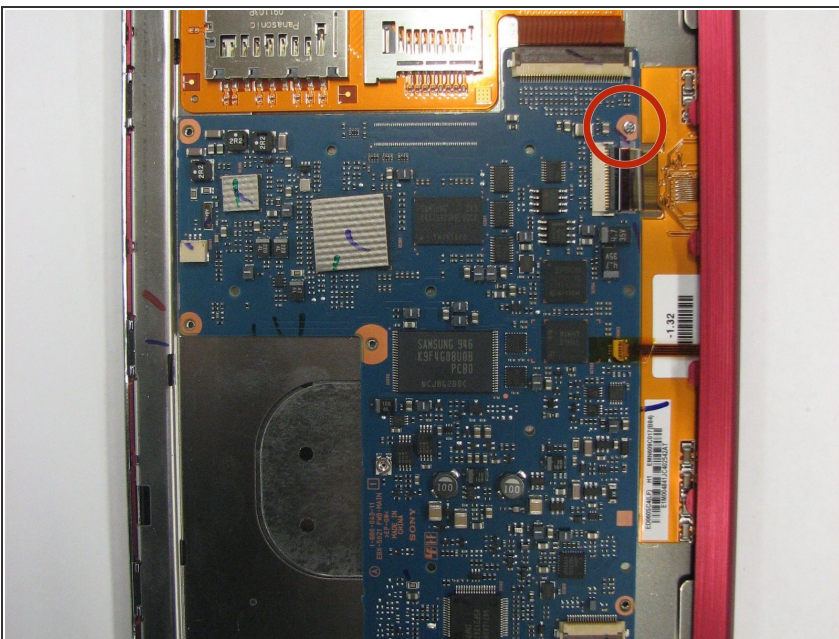
- Using a screwdriver remove the four 1.4 mm screws that are holding the black plastic casing in place.

## Step 11



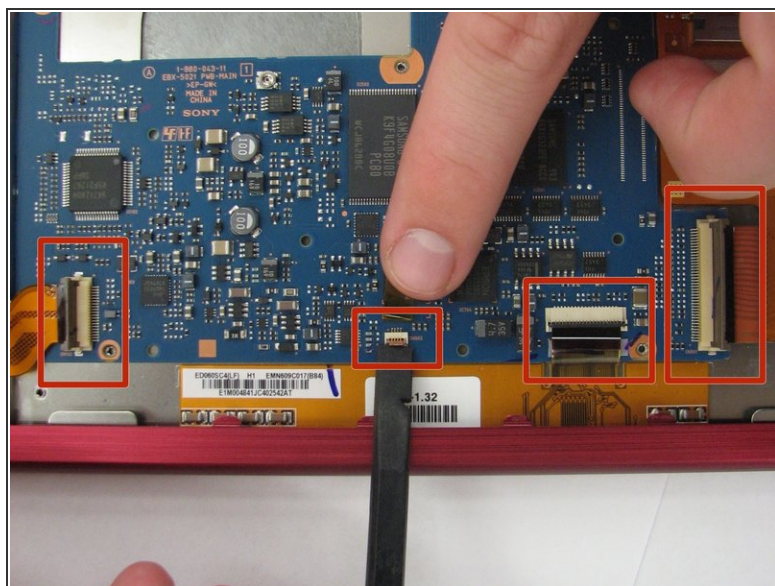
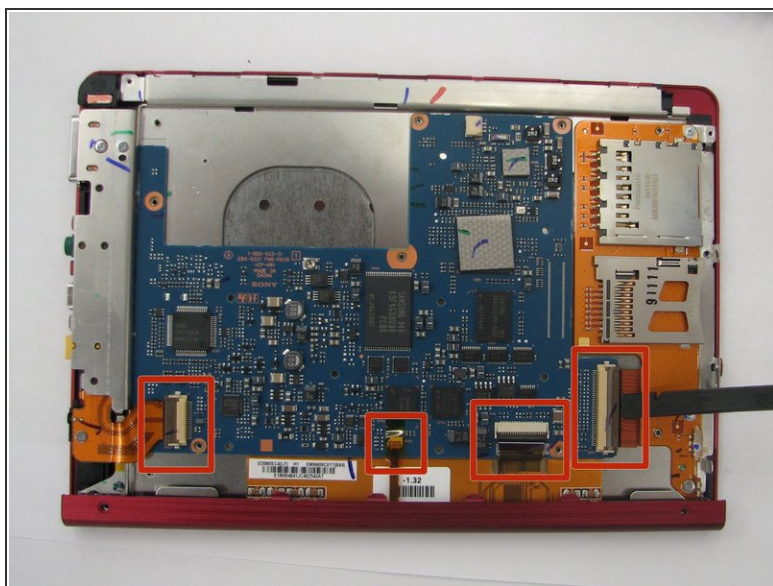
- Pry open the black casing to access the screw that is holding down the battery holder.
  - Remove the one 1.4 mm screw that is holding down the battery holder located under black casing.
  - Lift the black inner casing and the battery holder out of the device.
- ⚠ The battery holder and the black inner casing are connected by a thin strip of copper. There may be glue holding the black inner casing in place.

## Step 12 — Motherboard



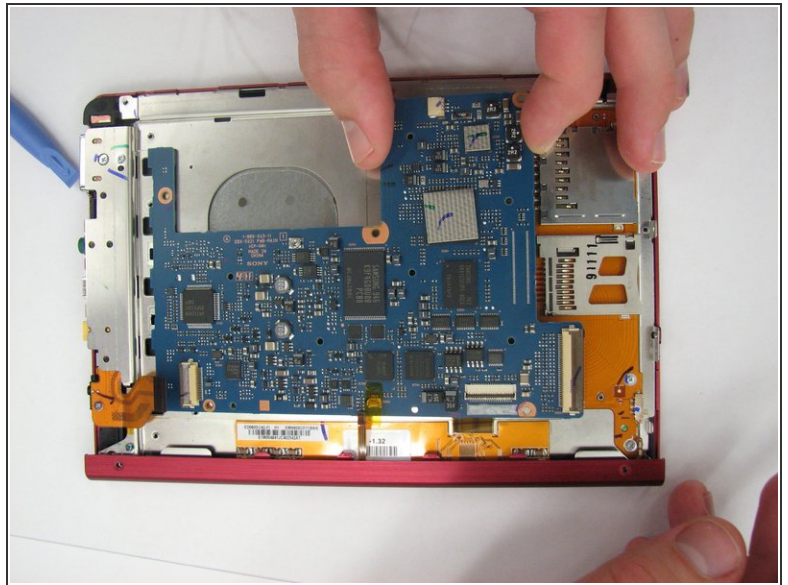
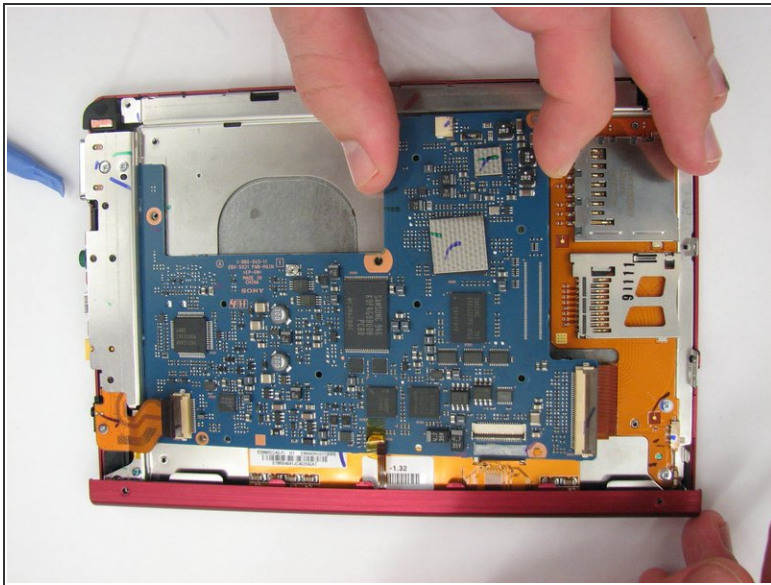
- Using a Phillips head screwdriver, remove the one 1.4 mm screw holding in the motherboard.

## Step 13



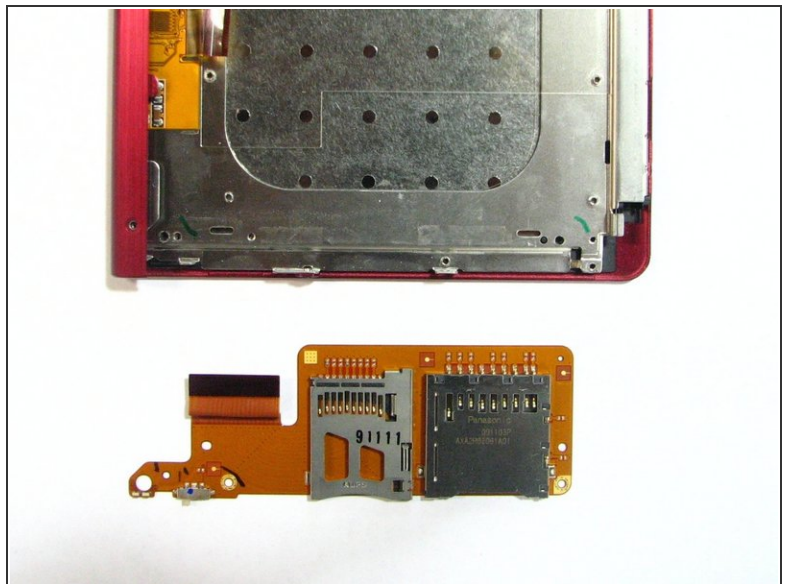
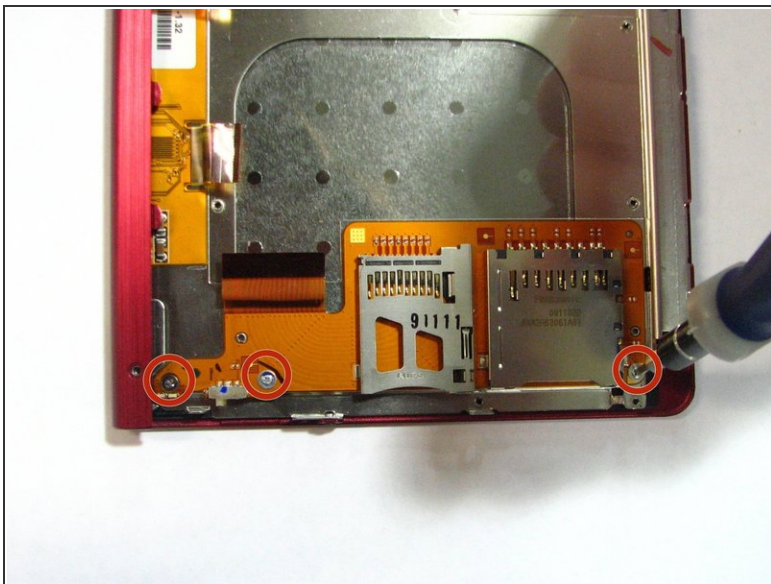
- Using the flat end of the spudger, flip up the 4 latches holding down the thin, orange strips that connect the motherboard to the screen, audio/AC adapter/micro USB ports, and SD card/PRO Duo ports.
- To disconnect the the screen, audio/AC adapter/micro USB ports, and SD card/PRO Duo ports pull each orange slip away from their corresponding latch.

## Step 14



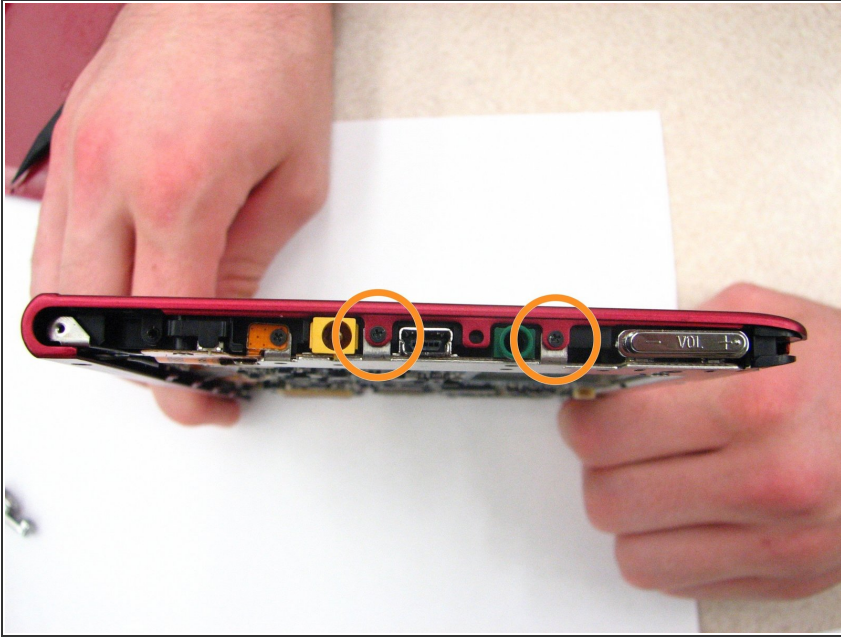
- Lift the end of the motherboard closest to the memory cards and pull out.

## Step 15 — Screen



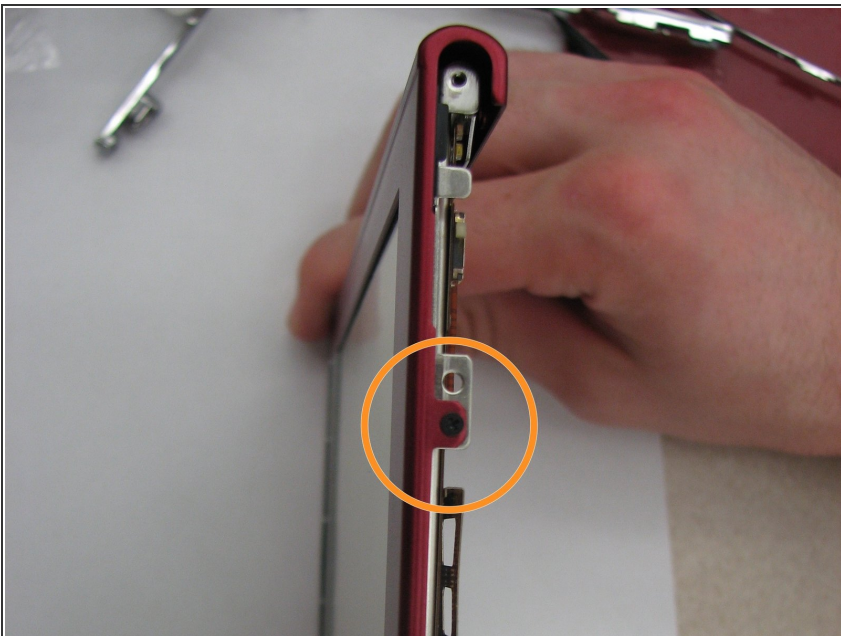
- Using a Phillips head screwdriver, remove the three 1.4 mm screws located on the SD/memory card holder.
- Remove the SD/memory card holder from the device.

## Step 16



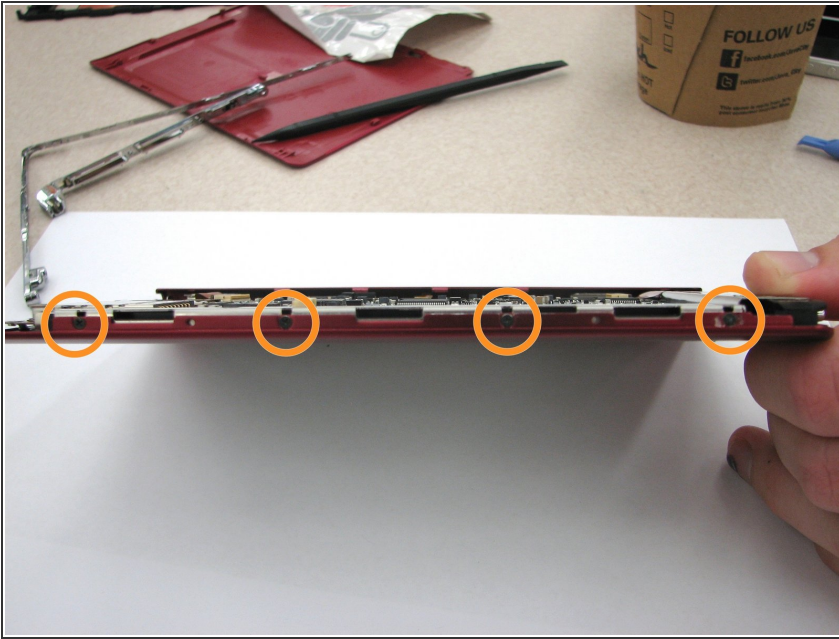
- Using the Phillips head screwdriver, remove the two 1.4 mm screws in the screen at the bottom of the device that are usually covered by the power switch panel.

## Step 17



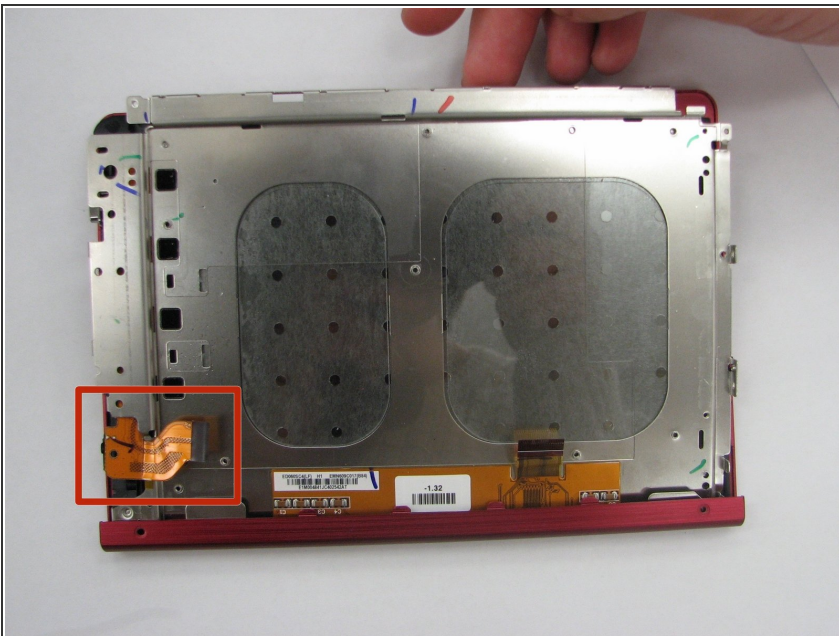
- Using the same screwdriver, remove the 1.4 mm screw at the bottom of the device that is usually covered by the bottom and side panel.

## Step 18



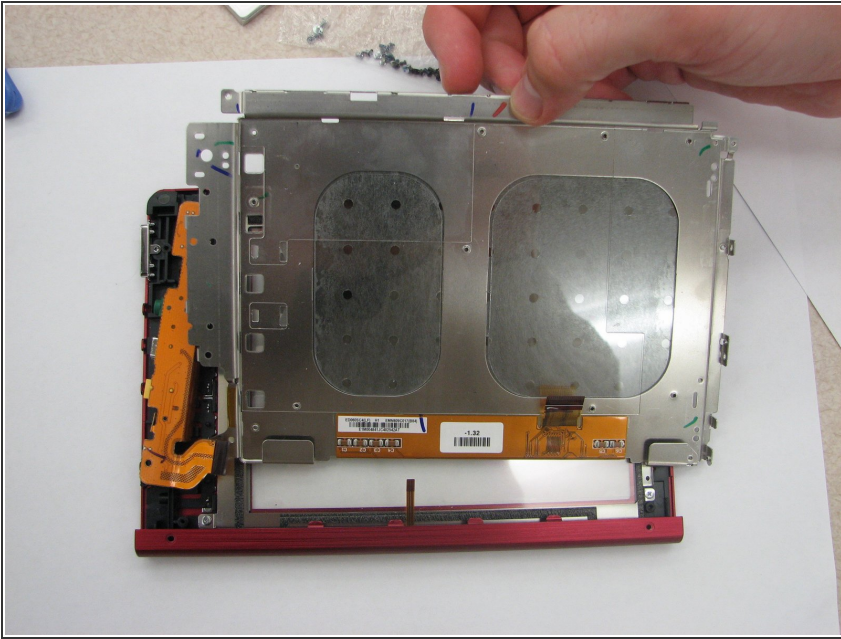
- Remove the four 1.4 mm screws that are located on the side of the device that are usually covered by the bottom and side panel.

## Step 19



- Be sure to lift the thin, orange strip that is attached to the audio/AC/mini USB ports out of the way, before removing the screen.

## Step 20



- Lift the end of screen opposite the red edge and pull it out of the casing.

To reassemble your device, follow these instructions in reverse order.