



Blu Studio 5.5 S Front Facing Camera Replacement

This guide involves removing the back case, battery, and inner back case to access the motherboard to remove and replace the front facing camera.

Written By: Cody Dyl



INTRODUCTION

In this guide you will learn where the front facing camera is located in the Blu Studio 5.5 S, along with how to remove and replace it.

TOOLS:

- [Spudger](#) (1)
 - [Tweezers](#) (1)
 - [Phillips #0 Screwdriver](#) (1)
-

Step 1 — Back Casing



- In order to remove the back case, start by flipping the phone to the back side and look at it from the top.

Step 2 — Applying Pressure



- Place your finger in the small notch on the left side of the charging port (facing from the back).
- Once your finger is in the notch, pull the back case towards yourself to remove it.

Step 3 — Battery



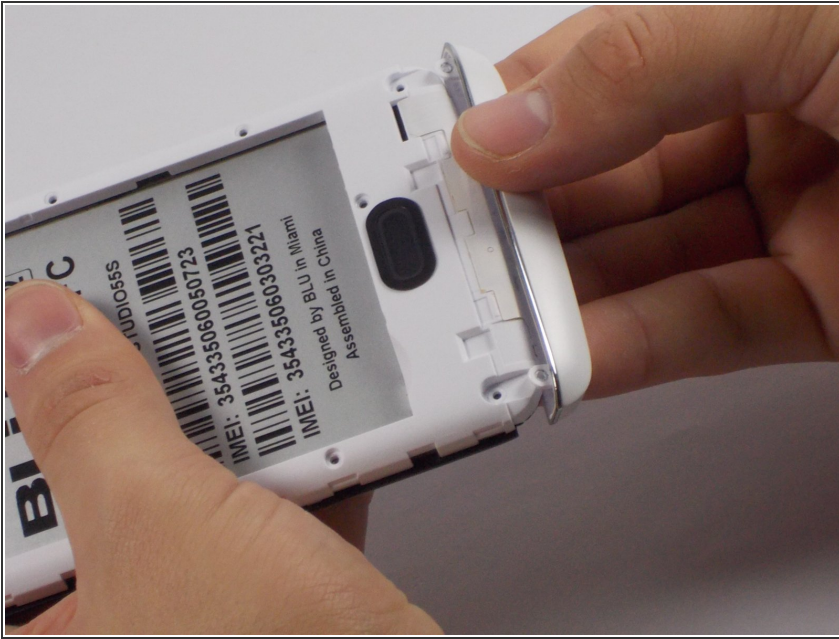
- Once the back case is removed, locate the battery. It is the large brick embedded in the phone. It has BLU Products, a caution statement, and a barcode on it.
- Insert your finger into the notch near the lower left of the battery, apply pressure and lift up.

Step 4 — Midframe



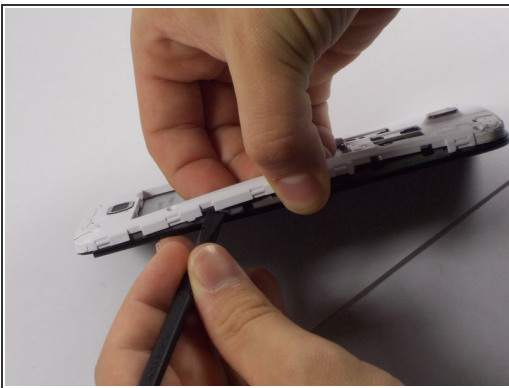
- The speaker is located behind the inner back case. Using a Phillips #0 screwdriver, unscrew the 10, 7mm screws.
- Using the Phillips #00 screwdriver, unscrew the two, 10mm screws at the bottom.

Step 5 — Aesthetic Bottom Case



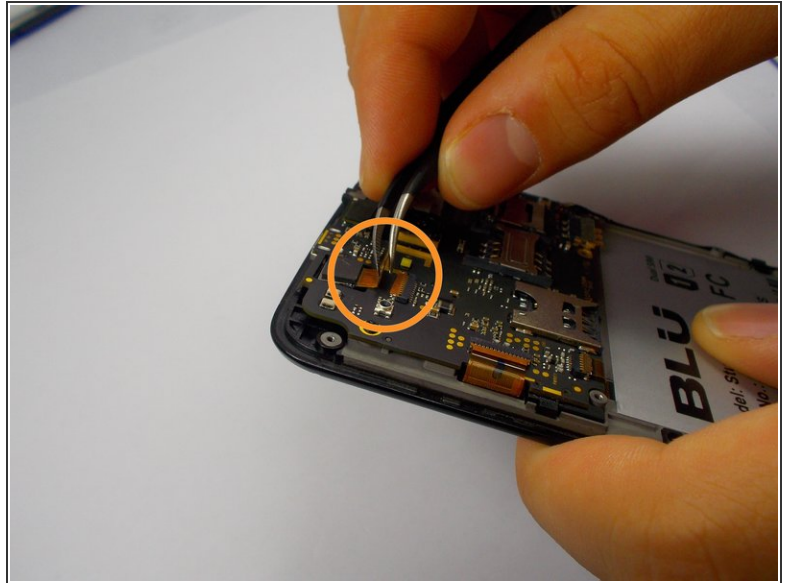
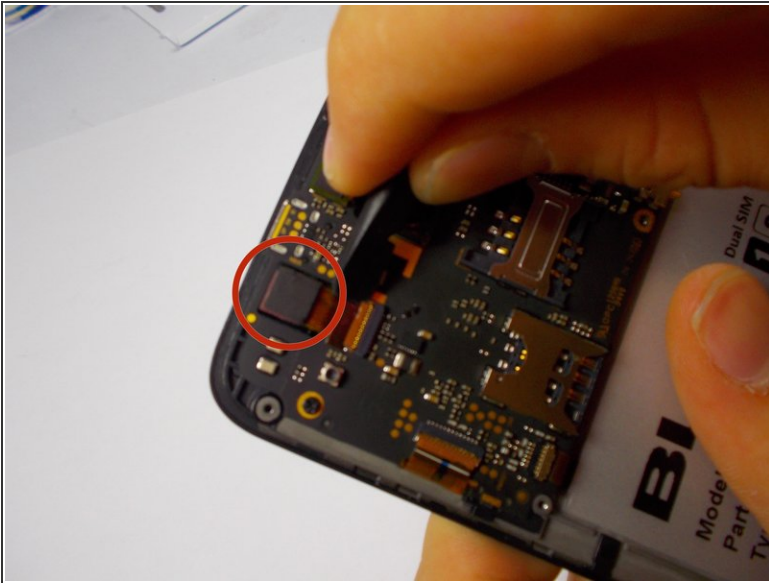
- Apply pressure and pop off the bottom aesthetic case, being careful not to break it.

Step 6



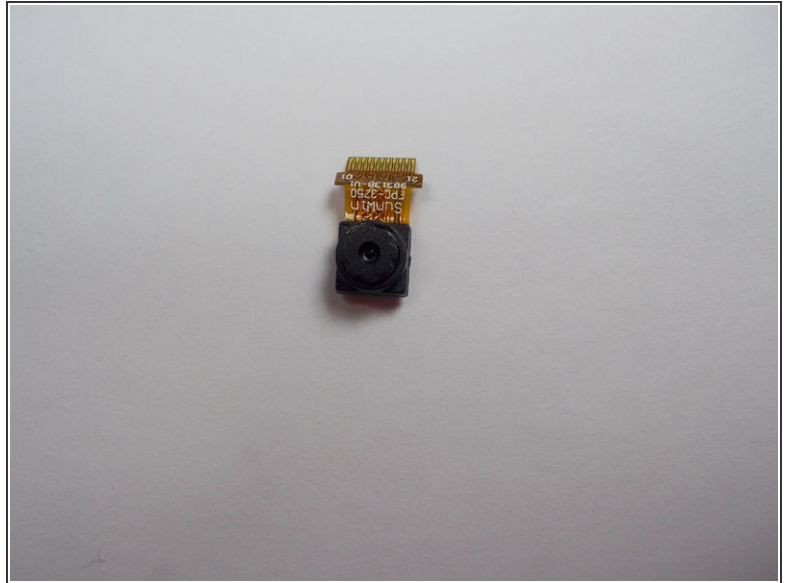
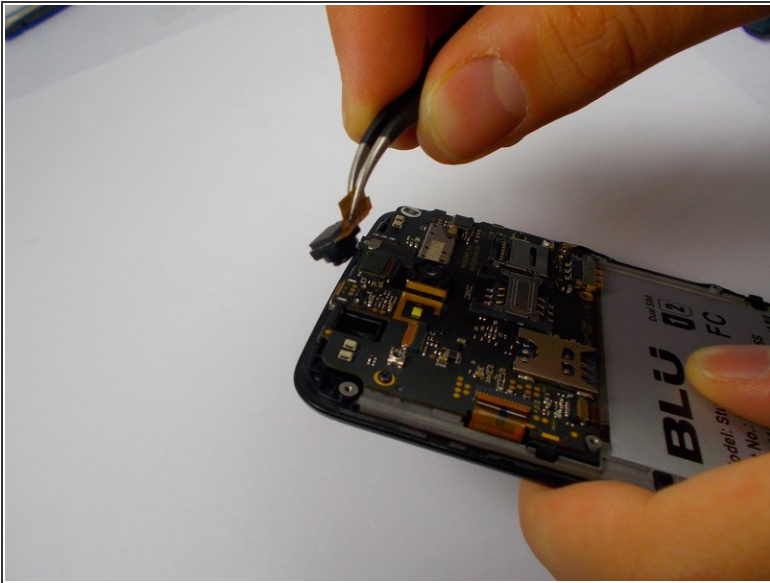
- Use the Spudger to pop the inner back casing off. Do this by lightly raising the side of the battery housing, then sliding the Spudger around the case.
- Pick up the inner back case and flip it over.

Step 7 — Frontward Facing Camera



- The frontward facing camera is located in the top left of the phone. It is connected to the motherboard by a ribbon connector, and a prong system.
- Use a spudger to detach the front facing camera by flipping the orange tab on the top of the prong system.
- Once the orange tab is up, pull out the orange ribbon wire.

Step 8



- Use tweezers to pick up the ribbon wire, and lift. The frontward facing camera will follow suit.

To reassemble your device, follow these instructions in reverse order.