



Canon PIXMA MP620B Scanner Light Replacement

The Scanner Light is the long green light that moves back and forth in the scanning bed. If it is broken or burnt out, replace it with this guide!

Written By: Val Fedorikhin



INTRODUCTION

If the scanner on your Canon PIXMA MP620B is not scanning your document and the scanner light did not turn on, it has possibly burnt out and needs replacement.

However, before using this guide, check to see if your driver is up to date. If your printer does not have the right software, the light will not turn on because the printer will not be able to read your commands. You can find driver and software updates [here](#).



TOOLS:

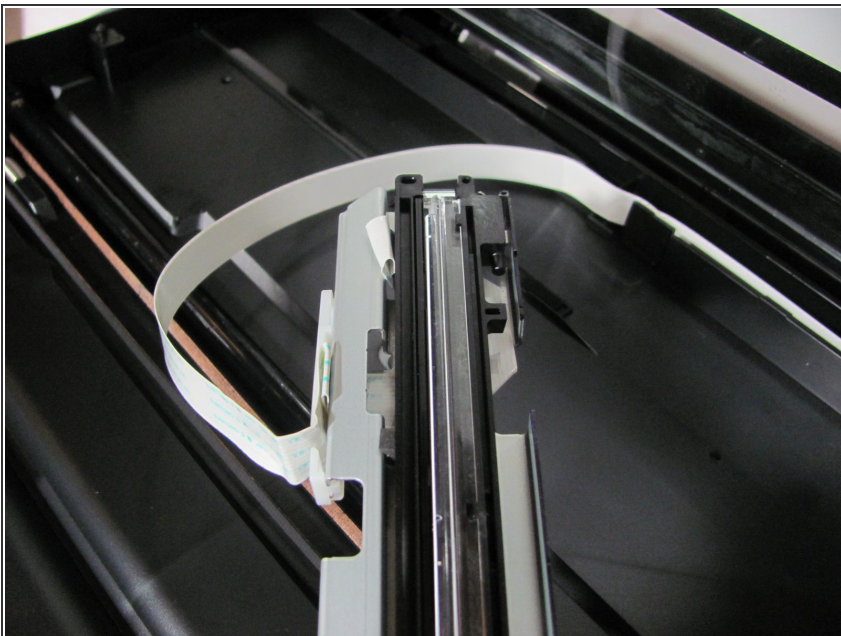
- [Spudger](#) (1)
-

Step 1 — Separate the scanner cover from the rest of the lid assembly



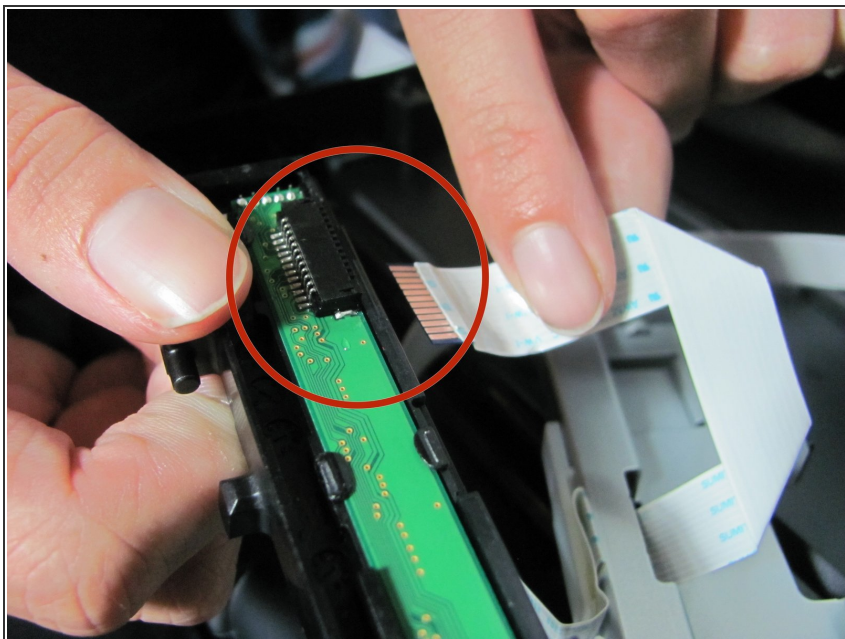
- You will have to pry off the glass cover lid. There are no screws that you have to worry about. Just insert a spudger into the crack between the glass lid and black base as shown.

Step 2 — Lift the glass cover of the scanner and take out scanner light



- After lifting the glass cover up, the light assembly will come free because it was only held in place by the glass top.

Step 3 — Unplug the white wire from the scanner light assembly



- Now that the scanner light assembly is free. Lift it out of the scanner bed and unplug the large white wire that attaches it to the rest of the printer.

To reassemble your device, follow these instructions in reverse order.