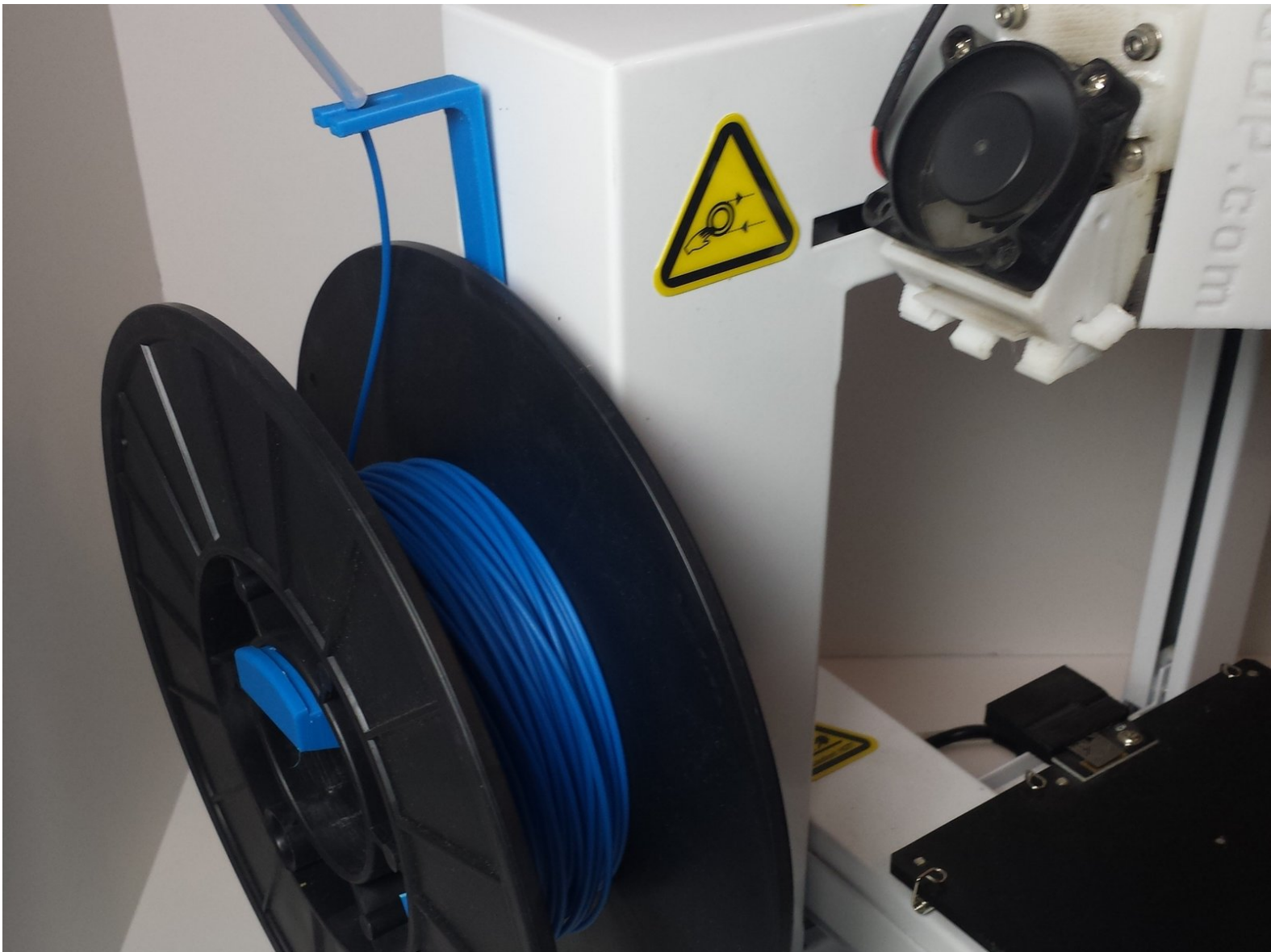




UP! Plus 2 Spool Holder Replacement

The spool holder is needed to hold the raw material needed to make the 3D printing.

Written By: valerie boyer



INTRODUCTION

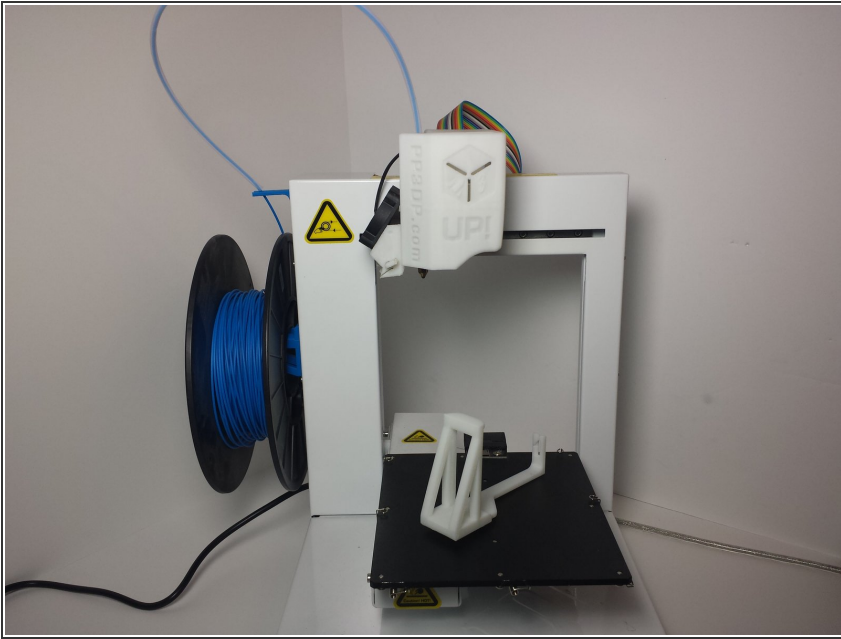
The spool holder is a 3D printed part that holds the filament spool and the feed tube, keeping it stable and secure to the system. Be sure to print a spare spool holder prior to replacement.




PARTS:

- [Up! Plus 2 Spool Holder](#) (1)
-

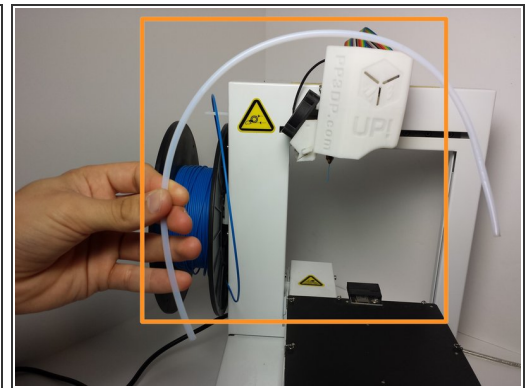
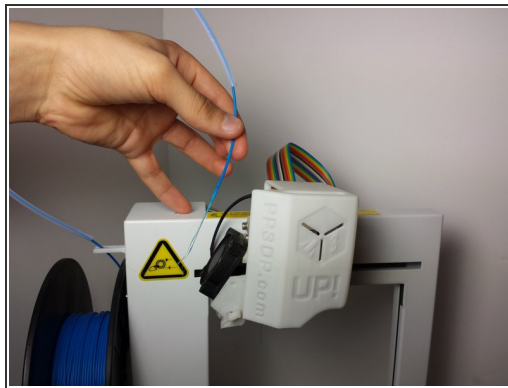
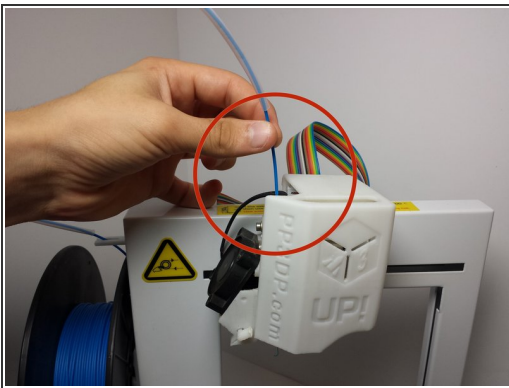
Step 1 — 3D print replacement spool holder





- Before your spool holder breaks, 3D print a replacement to have on hand. If you didn't preemptively print a replacement you can still print without a spool holder. Just find some way of holding the spool so that it can rotate as the filament gets pulled off.

 [Download the file for a new spool holder here](#)

Step 2 — Remove plastic filaments



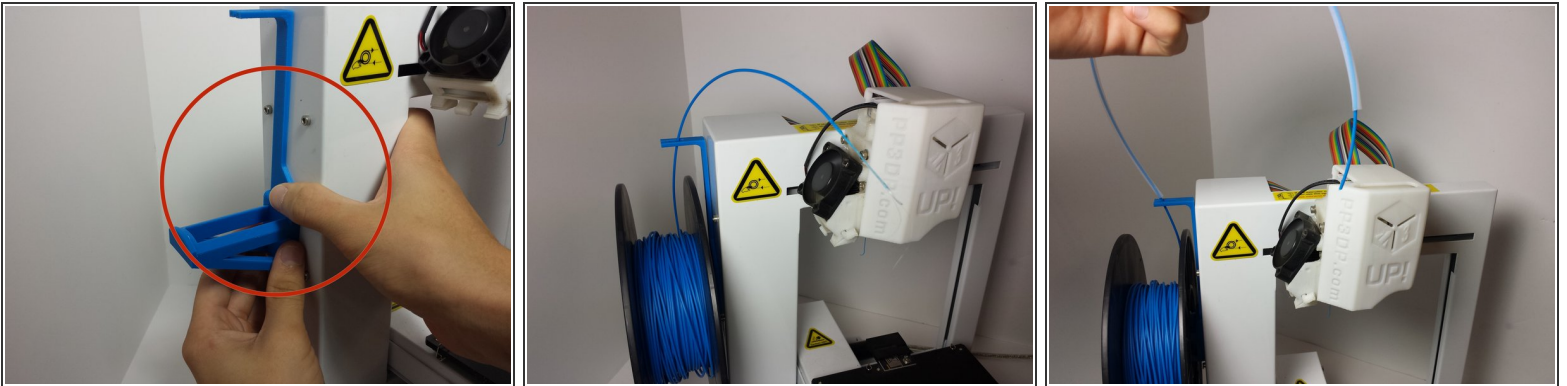
- Go to "Maintenance" and tell the printer to withdraw the plastic filament from the extrusion assembly. Finish removing the filament by pulling upwards.
-  Wait for a "beeping" sound before removing filament.
-  Cut off any damaged plastic from the end of the filament.
- Remove the plastic filament tube from the spool.

Step 3 — Remove spool holder



- Remove the spool from the spool holder by lifting it up and taking it off.
- ⓘ Put the end of the filament through the hole on the side of the spool to keep it from unraveling.
- Slide the spool holder upwards, and then pull outwards.

Step 4 — Replace spool holder



- Place the new spool holder by pushing it inwards and sliding it down until it locks.
- Repeat the steps in reverse chronological order to reassemble the printer.
- ⓘ The spool should be inserted in way that end of the filament points towards, not away.