



Huawei Ascend P6-U06 SIM Card Replacement

Learn how to replace the SIM card in your Huawei Ascend P6-U06.

Written By: Chase Hemming



INTRODUCTION

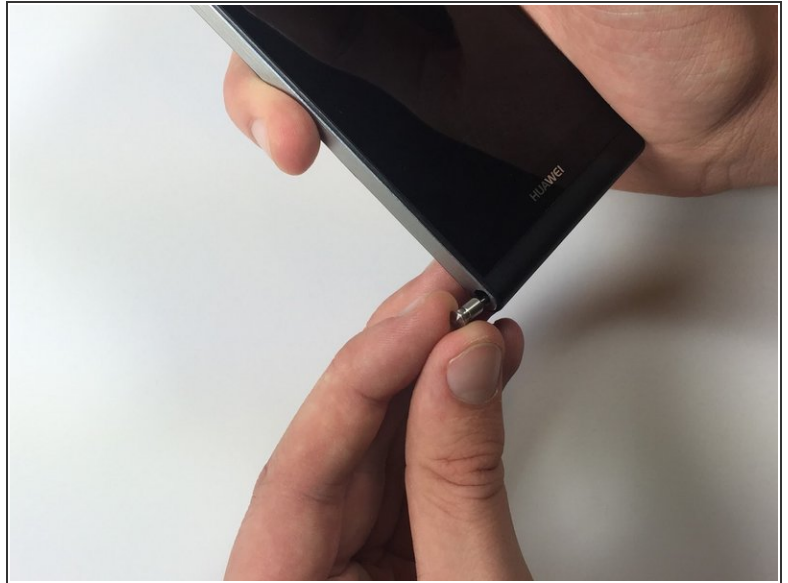
Follow this guide to replace the SIM card in your Huawei Ascend P6-U06.



TOOLS:

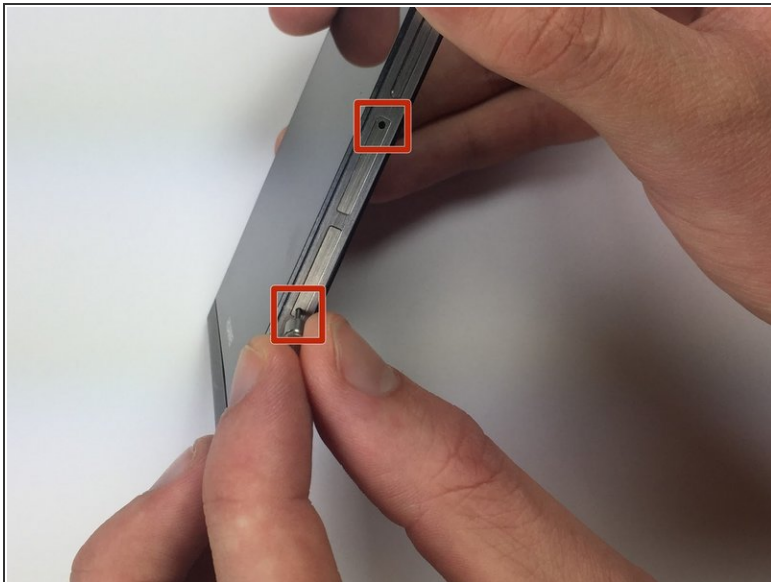
- [SIM Card Eject Tool](#) (1)
-

Step 1 — SIM Card



- Pull and twist the pin near the bottom left-side of the phone to remove it from the headphone jack.

Step 2



- Insert the pin into the SIM card opening located on the right-side of the phone.
- Gently push in until the SIM card clicks, and then pull the pin and SIM card out.
- Repeat this process for the additional SIM card.

To reassemble your device, follow these instructions in reverse order.